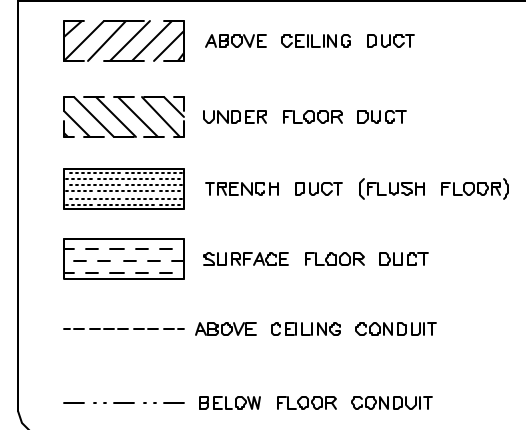


SCALE: 1/4" = 1'-0"

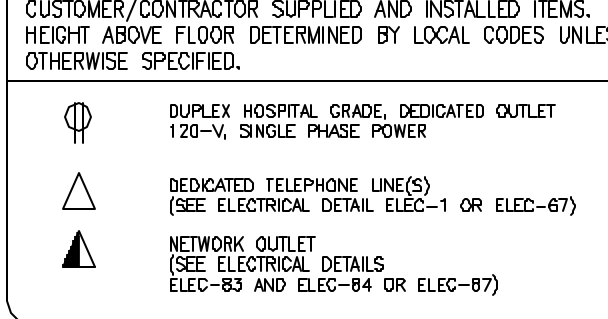
ELECTRICAL PLAN

RECOMMENDED CEILING HEIGHT = 9'-0"

DUCT HATCHING LEGEND



ELECTRICAL OUTLET LEGEND



JEDI 80kW SYSTEMS CABINET REV. DATE: 02/25/06

\* CALCULATIONS BASED UPON NOMINAL VOLTAGE, WIRE SIZE IN AWG.  
 \* RECOMMENDED FEEDER SIZES FROM DISTRIBUTION TRANSFORMER TO THE POWER CABINET.  
 \* NEUTRAL MUST BE TERMINATED INSIDE THE MAIN DISCONNECT PANEL AND NOT AT ANY GE CABINET.  
 \* THE GROUNDING CONDUCTOR WILL BE OF SAME SIZE AS THE FEEDER. THIS GROUNDING WILL RUN FROM THE EQUIPMENT BACK TO THE FACILITY POWER SOURCE/MAIN GROUNDING POINT AND ALWAYS TRAVEL IN THE SAME CONDUIT WITH THE FEEDERS AND NEUTRAL.  
 \* MINIMUM WIRE SIZE FOR CIRCUIT BREAKER, BASED ON RECOMMENDED OVERCURRENT PROTECTION.  
 \* FOR A FULL SYSTEM UPS, REFER TO ELECTRICAL DETAILS FOR UPS FEEDER WIRES.

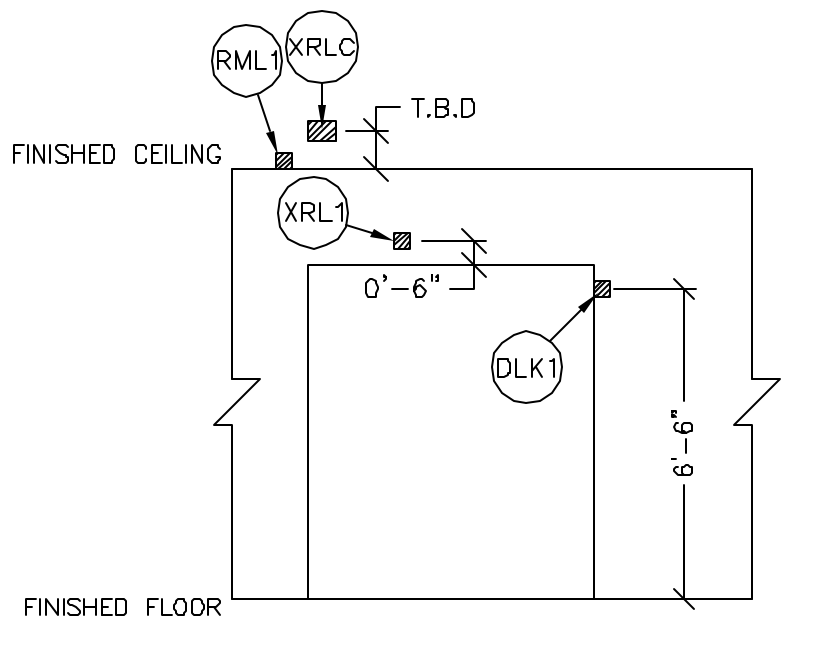
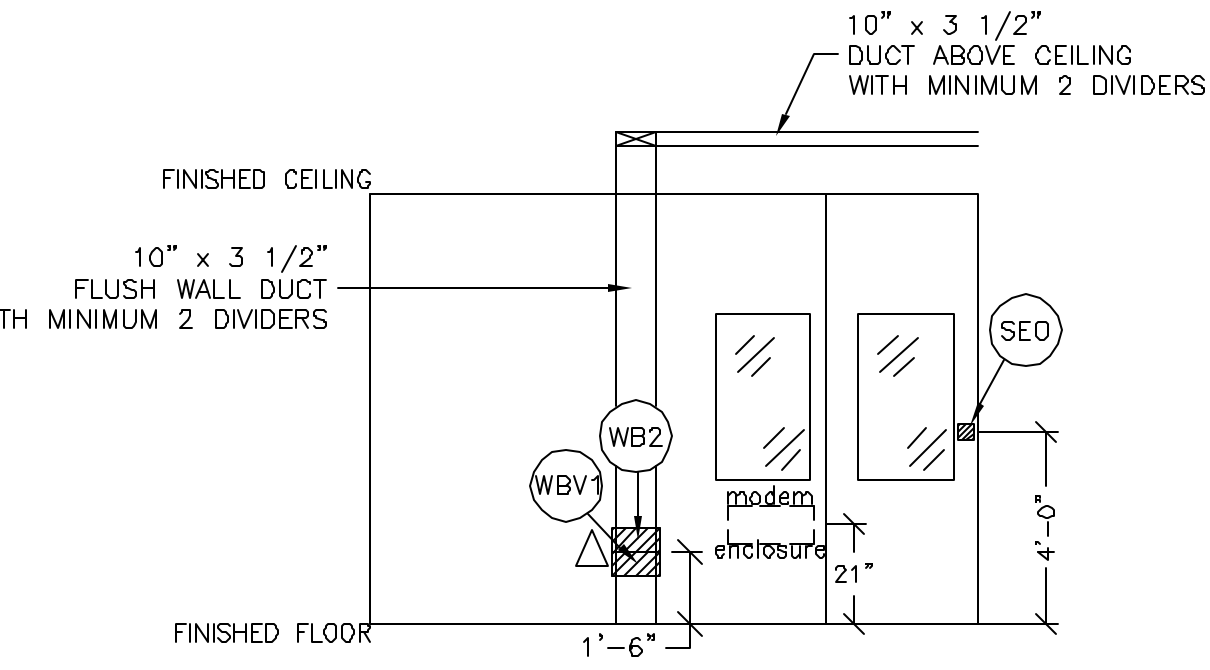
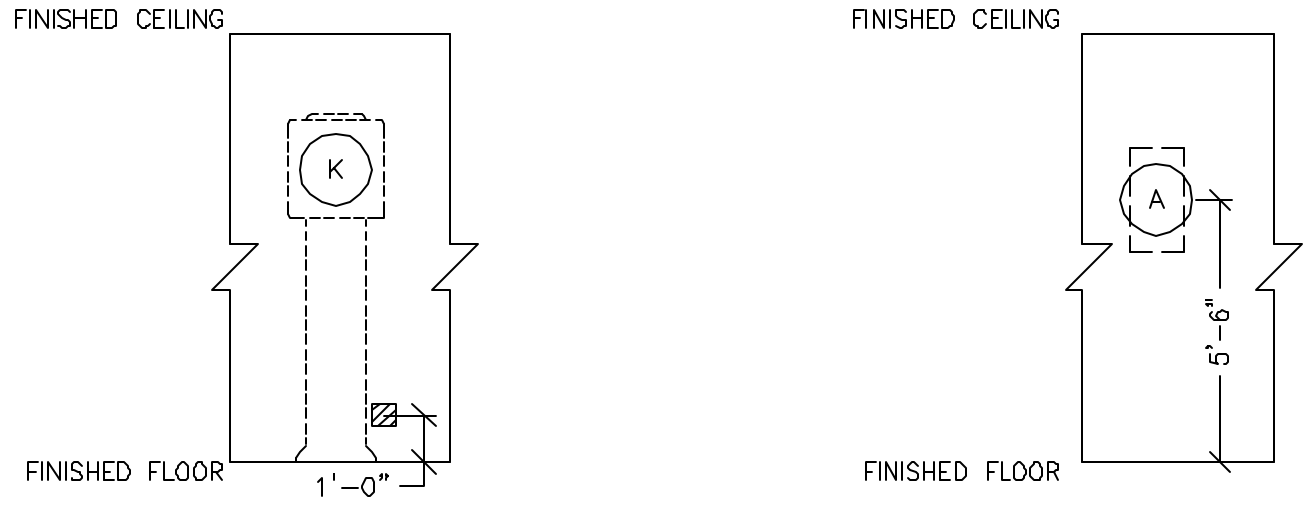
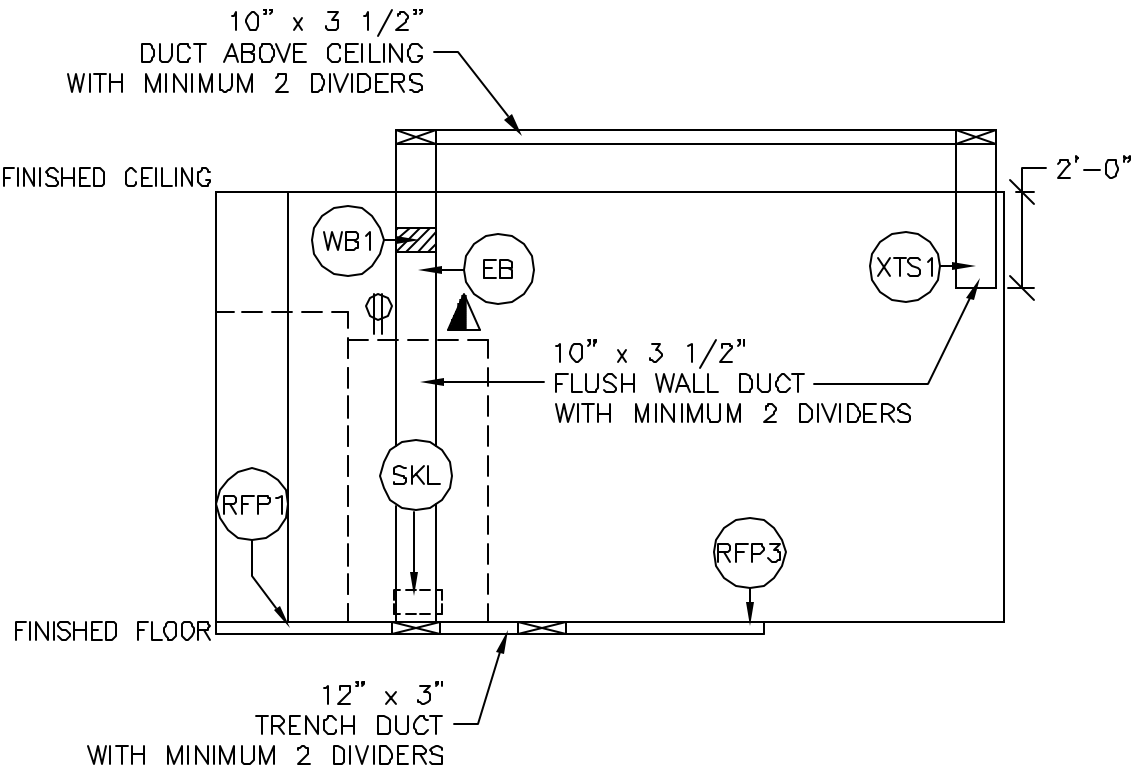
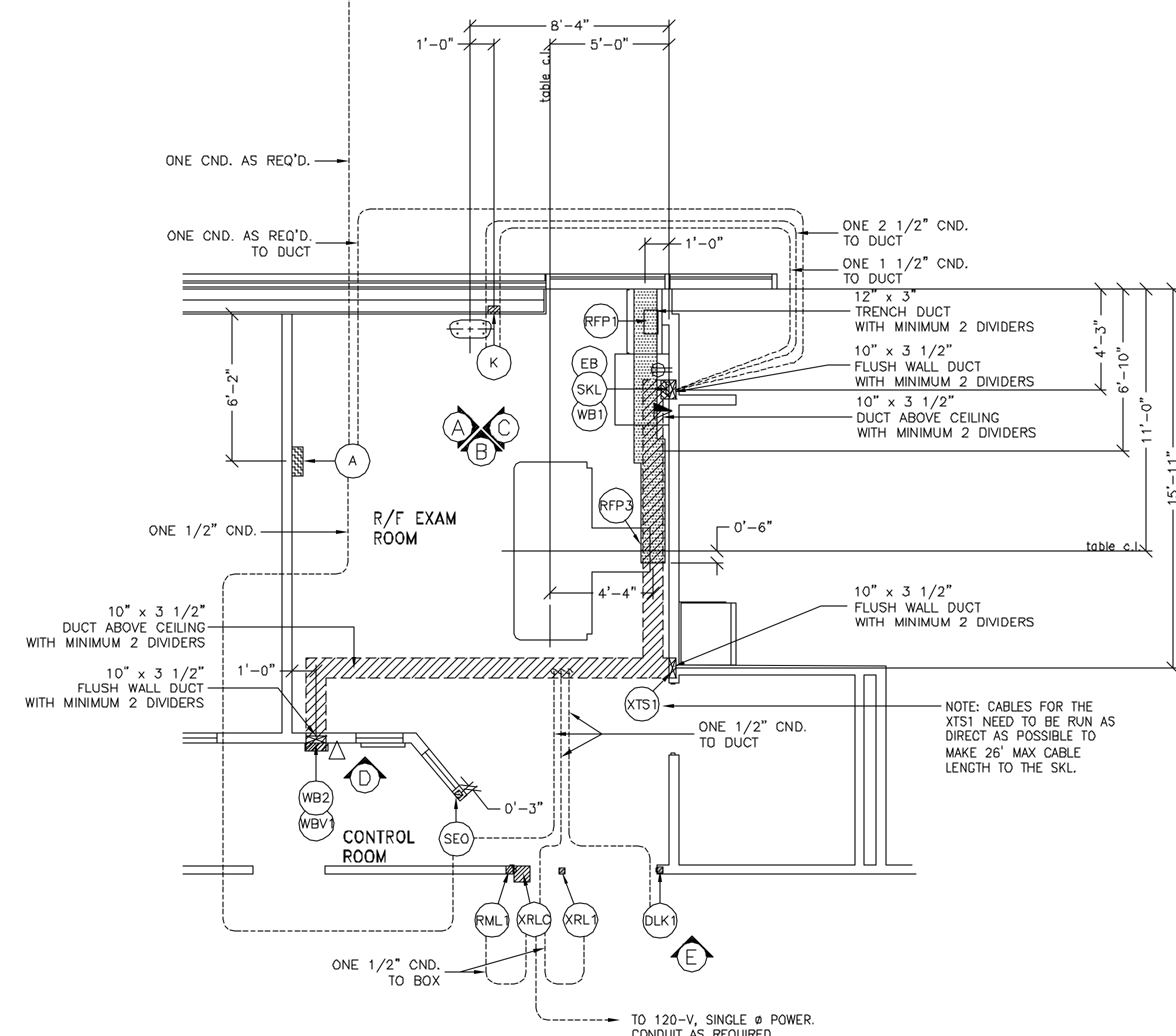
RUN LENGTH IN FEET	POWER SUPPLY VOLTAGE					
	345-418 380	360-440 400	375-456 420	388-484 440	414-506 460	432-528 480
50	* 2	* 2	* 2	* 2	* 2	* 2
100	* 2	* 2	* 2	* 2	* 2	* 2
150	1/0	1	1	* 2	* 2	* 2
200	2/0	2/0	1/0	1/0	1	1
250	3/0	3/0	2/0	2/0	1/0	1/0
300	4/0	4/0	3/0	3/0	2/0	2/0
350	300M	250M	4/0	4/0	3/0	3/0
400	350M	300M	250M	4/0	4/0	3/0
450	400M	350M	300M	250M	250M	4/0

JUNCTION POINT NOTES

- ALL JUNCTION BOXES, CONDUIT, DUCT, DUCT DIVIDERS, SWITCHES, CIRCUIT BREAKERS, ETC., ARE TO BE SUPPLIED AND INSTALLED BY CUSTOMER'S ELECTRICAL CONTRACTOR.
- CONDUIT AND DUCT RUNS SHALL HAVE SWEEP RADIUS BENDS.
- CONDUITS AND DUCT ABOVE CEILING OR BELOW FINISHED FLOOR MUST BE INSTALLED AS NEAR TO CEILING OR FLOOR AS POSSIBLE TO REDUCE RUN LENGTH.
- ALL DUCTWORK MUST MEET THE FOLLOWING REQUIREMENTS:
  - DUCTWORK SHALL BE METAL WITH DIVIDERS AND HAVE REMOVABLE, ACCESSIBLE COVERS.
  - DUCTWORK SHALL BE CERTIFIED/RATED FOR ELECTRICAL POWER PURPOSES.
  - DUCTWORK SHALL BE ELECTRICALLY AND MECHANICALLY BONDED TOGETHER IN AN APPROVED MANNER.
  - PVC AS A SUBSTITUTE MUST BE USED IN ACCORDANCE WITH ALL LOCAL AND NATIONAL CODES.
- ALL OPENINGS IN ACCESS FLOORING ARE TO BE CUT OUT AND FINISHED OFF WITH GROMMET MATERIAL BY THE CUSTOMER'S CONTRACTOR.
- GENERAL CONTRACTOR TO INSERT PULL CORDS FOR ALL CABLE RUN CONDUITS BETWEEN THE EQUIPMENT ROOM AND THE OPERATORS CONTROL ROOM.

JUNCTION POINT DESCRIPTIONS

POINT	DESCRIPTION	QTY.	HARDWARE	DETAIL NO., SH. E3
A	MAIN DISCONNECT AVAILABLE FROM GEMS CAT. NO. E450EJD OR WITH AUTO RESTART FEATURE-E450EKJ. EMERGENCY OFF OR LOCAL GE INSTALLATION PROJECT MGR.	1	110-AMP CIRCUIT BREAKER PANEL.	ELEC-15
DLK1	DOOR SWITCH	1	ROOM DOOR INTERLOCK LIMIT SWITCH IN FRAME - NORMALLY OPEN (24V) SINGLE GANG BOX	ELEC-113
EB	ETHERNET BOX	1	CONNECT EXTERNALLY TO SKL	ELEC-79
K	CHEST UNIT	1	SPLIT COVERPLATE 1 2 IN. DIA. CHASE NIPPLE 1 1/2 IN. DIA. CHASE NIPPLE 1 6 X 6 X 4 IN. BOX WITH DIVIDER	ELEC-3
RFP1	POSITIONER CABINET	2	3 1/2 IN. DIA. CHASE NIPPLE 2 SUITABLE BUSHING & LOCKNUT	ELEC-3
RFP3	X-RAY TABLE	3	3 1/2 IN. NIPPLES, 1 1/2 IN. LONG	ELEC-3
RML1	ROOM LIGHTS AVAILABLE FROM GE. CALL 800-558-5102	1	COVERPLATE SINGLE GANG BOX E450GAL 24V X-RAY ROOM WARNING LIGHT AND ROOM LIGHT CONTROLLER OR EQUIVALENT.	ELEC-17
SEO	EMERGENCY OFF	1	PROVIDE A SINGLE GANG, 2 1/8 IN. AN 8 X 8 IN. OPENING IN DUCT COVER	ELEC-116 ELEC-126
SKL	SYSTEMS CABINET	1	32 IN. OF GROMMET MATERIAL FOR AN 8 X 8 IN. OPENING IN DUCT COVER	ELEC-5 ELEC-6
WB1	IN-ROOM MONITOR WALLBOX	1	10 X 6 X 4 IN. BOX	ELEC-28 ELEC-110
WB2	JUI WALLBOX	1	12 X 6 X 4 IN. BOX	ELEC-28 ELEC-109
WBV1	DVD RECORDER	1	10 X 6 X 4 IN. BOX	ELEC-28 ELEC-111
XRL1	WARNING LIGHT	1	'X-RAY ON' INCANDESCENT LIGHT FIXTURE DO NOT USE FLUORESCENT FIXTURES GE CAT. NO. WX1ABW-OF-XIU	ELEC-17
XRLC	WARNING LIGHT CONTROLLER AVAILABLE FROM GEMS. CALL 800-558-5102 OR LOCAL GE INSTALLATION PROJECT MGR.	1	E450GAL WARNING LIGHT & ROOM LIGHT CONTROL MAX 24V CONTROLLER	ELEC-17
XTS1	X-RAY TUBE HANGER	1	32 IN. OF GROMMET MATERIAL FOR AN 8 X 8 IN. OPENING IN DUCT COVER	ELEC-5 ELEC-6



Drawn by: Nicole Springstroh Octal no.: 3204498  
 GE Installation  
 Project Manager: JIM DOMBROSKI  
 Telephone no.: 603-934-3739

CONTRACTOR SUPPLIED AND INSTALLED WIRING

ELECTRICAL CONTRACTOR SHALL RING OUT AND TAG ALL WIRES AT BOTH ENDS.

WIRE RUN, FROM - TO	QUANTITY, WIRE SIZE/COLOR
XRLC > 1 PHASE	1-ND. 14 BLACK, 1-ND. 14 WHITE, 1-ND. 14 GREEN
A > SEO	1-ND. 14 BLACK, 1-ND. 14 WHITE, 1-ND. 14 GREEN
SKL > XRLC	2-ND. 14 BLACK, 1-ND. 14 RED, 1-ND. 14 WHITE
XRLC > RML1	1-ND. 14 BLACK, 1-ND. 14 WHITE, 1-ND. 14 GREEN
480-V > A	3-BLACK, 1-WHITE, 1-GREEN - REFER TO FEEDER TABLE
XRL1 > XRLC	1-ND. 14 BLACK, 1-ND. 14 WHITE, 1-ND. 14 GREEN
A > SKL	3-ND. 4 BLACK, 1-ND. 4 GREEN

**GE Healthcare Technologies**  
 Installation Services Design Center  
 Milwaukee, Wisconsin

SHEET TITLE: ELECTRICAL LAYOUT  
 MODALITY TYPE: PRECISION 500D

THIS PLAN IS SUBMITTED TO SUGGEST LOCATION OF GE HEALTHCARE EQUIPMENT AND ASSOCIATED APPARATUS. ELECTRICAL WIRING DETAILS AND ROOM ARRANGEMENTS ARE SUBJECT TO CHANGE. THE CONTRACTOR SHALL VERIFY THE LOCATION OF ALL EQUIPMENT BEFORE INSTALLATION. THE COMPANY CANNOT ACCEPT RESPONSIBILITY FOR ANY DAMAGES RESULTING THEREFROM.

PROJECT TITLE:  
**MERCY HOSPITAL  
 FORE RIVER  
 PORTLAND, MAINE**

PROJECT	REVISION
065710	00

DATE: 09-18-06  
 DRAWN BY: NMS  
 CHECKED BY: JDR  
 QUOTE NO.: KX1CB9  
 QT. DATE: 09-07-06

REVISION HISTORY:

NO.	DESCRIPTION

SHEET  
**E1**