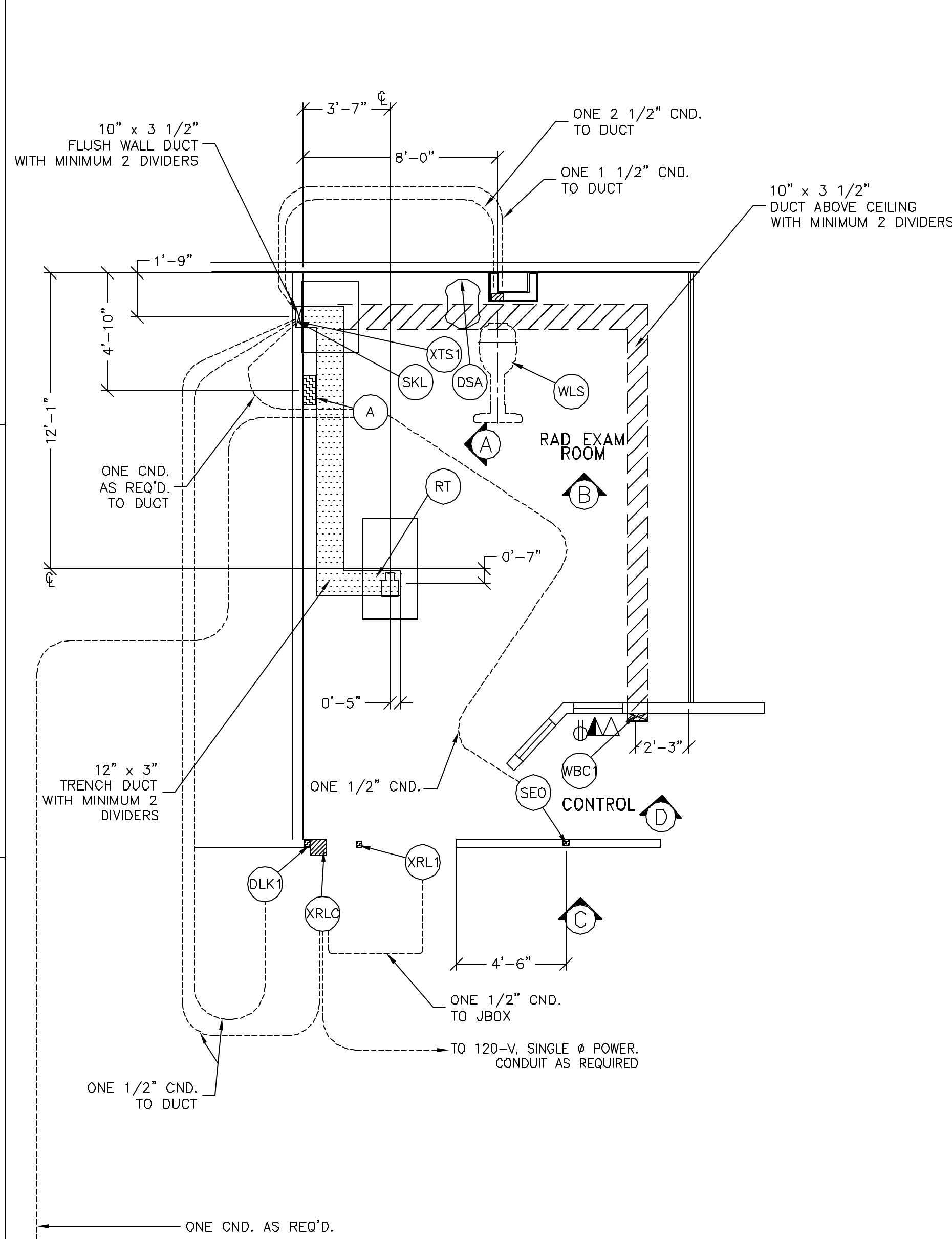
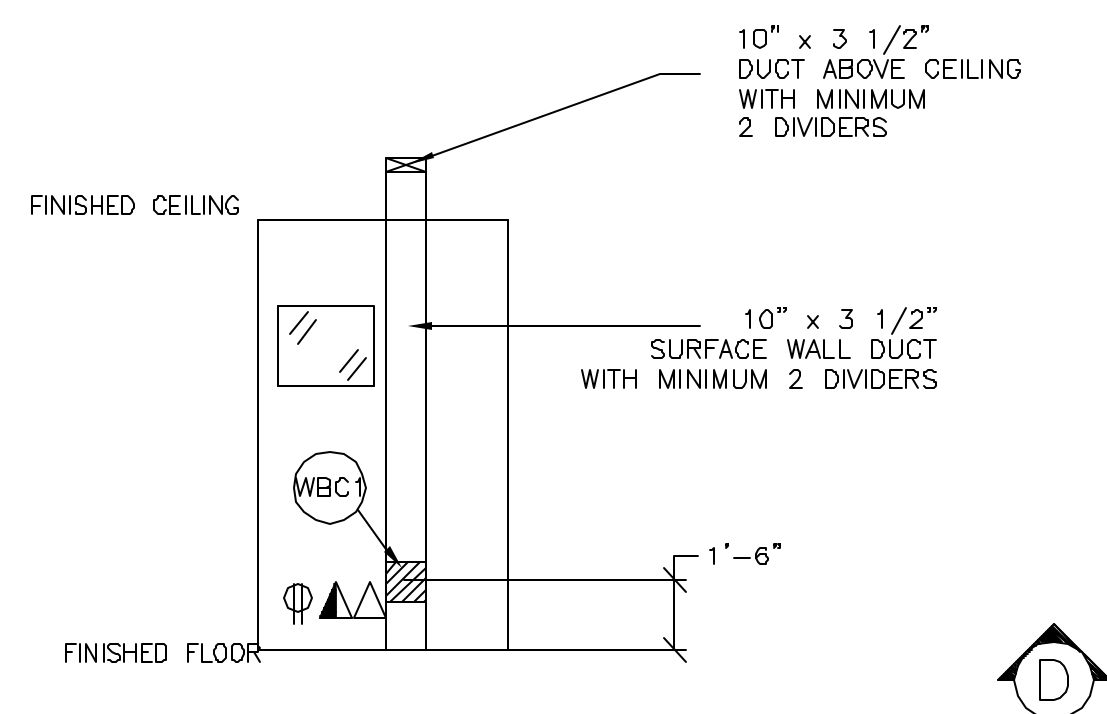
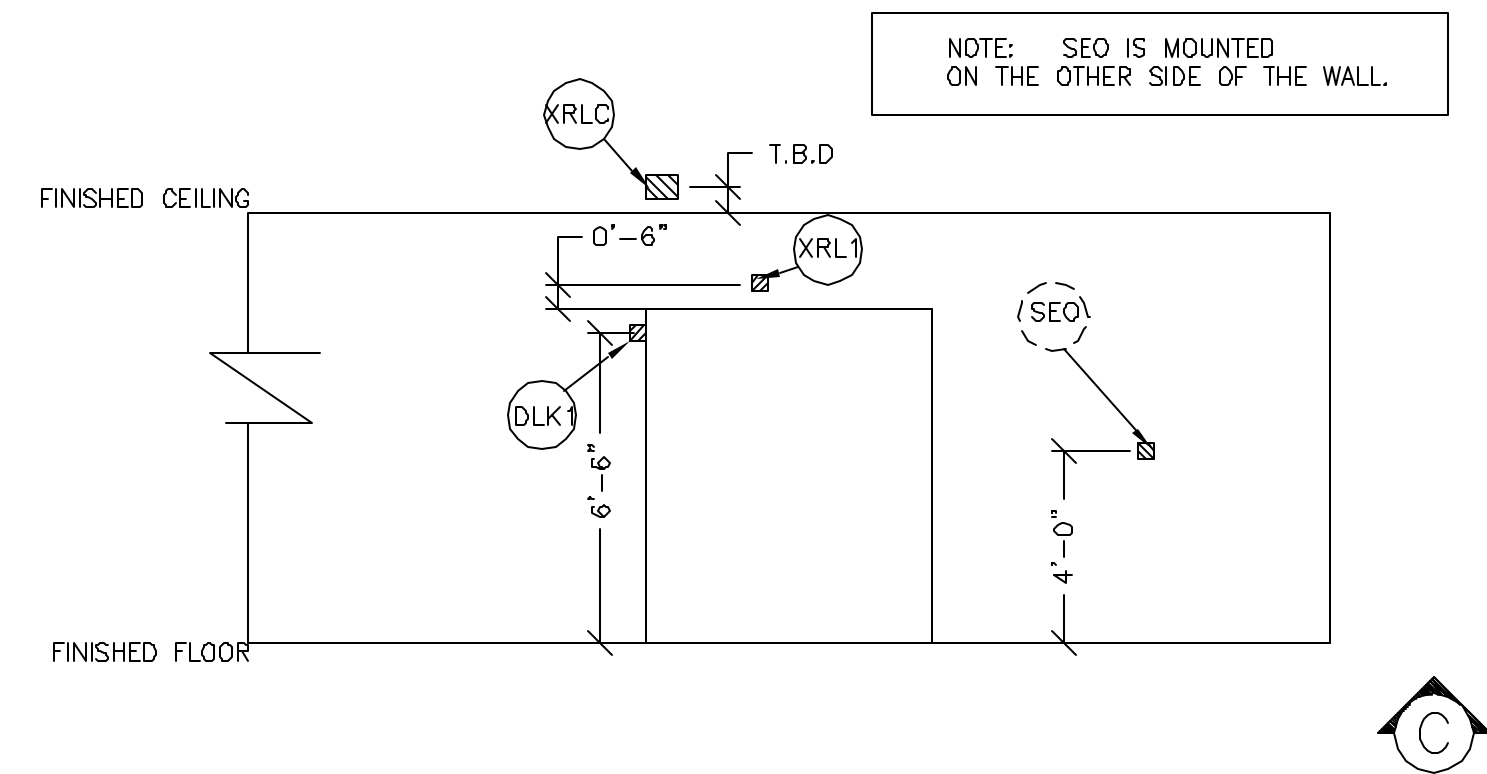
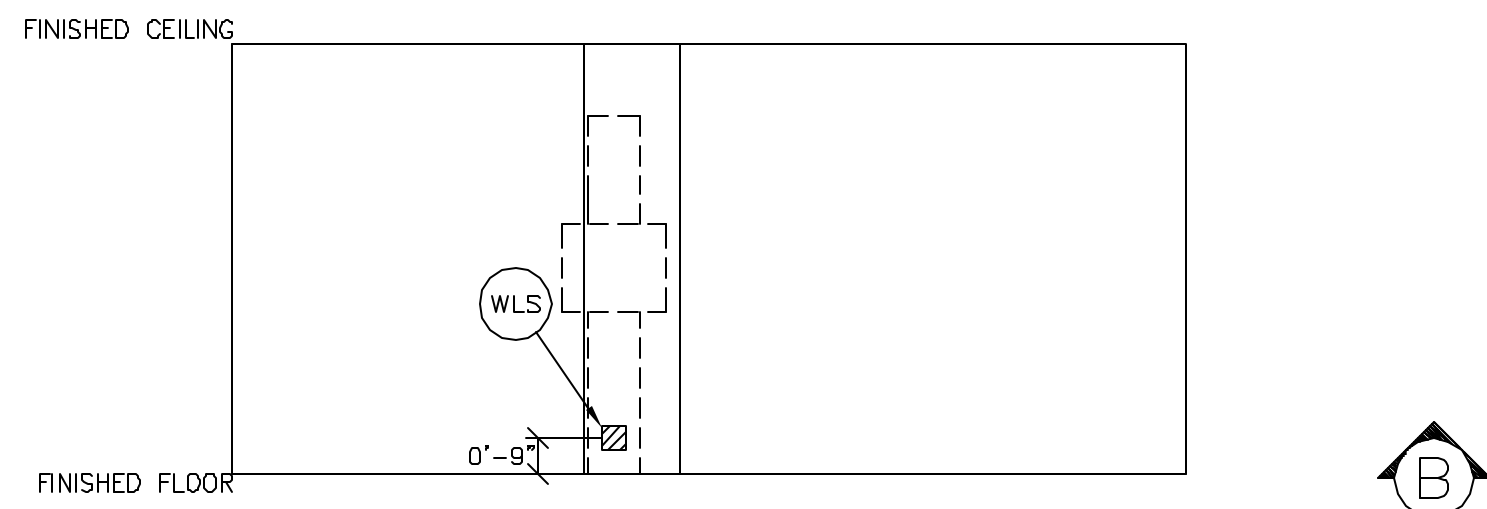
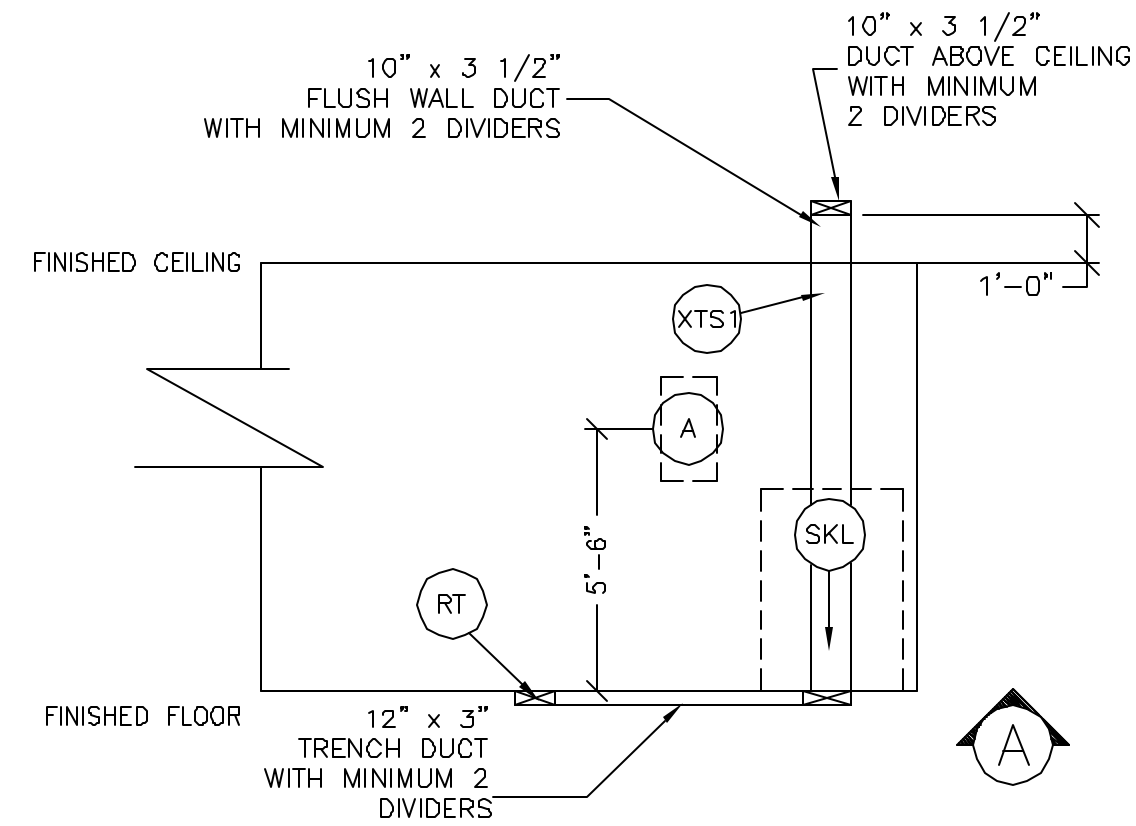
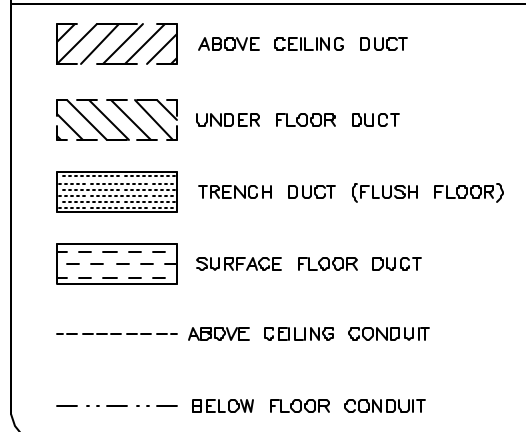


SCALE: 1/4" = 1'-0"

ELECTRICAL PLAN

RECOMMENDED CEILING HEIGHT = 9'-0"

DUCT HATCHING LEGEND



JUNCTION POINT NOTES

- ALL JUNCTION BOXES, CONDUIT, DUCT, DUCT DIVIDERS, SWITCHES, CIRCUIT BREAKERS, ETC., ARE TO BE SUPPLIED AND INSTALLED BY CUSTOMER'S ELECTRICAL CONTRACTOR.
- CONDUIT AND DUCT RUNS SHALL HAVE SWEEP RADIUS BENDS
- CONDUITS AND DUCT ABOVE CEILING OR BELOW FINISHED FLOOR MUST BE INSTALLED AS NEAR TO CEILING OR FLOOR AS POSSIBLE TO REDUCE RUN LENGTH.
- ALL DUCTWORK MUST MEET THE FOLLOWING REQUIREMENTS:
 - DUCTWORK SHALL BE METAL WITH DIVIDERS AND HAVE REMOVABLE, ACCESSIBLE COVERS.
 - DUCTWORK SHALL BE CERTIFIED/RATED FOR ELECTRICAL POWER PURPOSES.
 - DUCTWORK SHALL BE ELECTRICALLY AND MECHANICALLY BONDED TOGETHER IN AN APPROVED MANNER.
 - PVC AS A SUBSTITUTE MUST BE USED IN ACCORDANCE WITH ALL LOCAL AND NATIONAL CODES.
- ALL OPENINGS IN ACCESS FLOORING ARE TO BE CUT OUT AND FINISHED OFF WITH GROMMET MATERIAL BY THE CUSTOMER'S CONTRACTOR.
- GENERAL CONTRACTOR TO INSERT PULL CORDS FOR ALL CABLE RUN CONDUITS BETWEEN THE EQUIPMENT ROOM AND THE OPERATORS CONTROL ROOM.

JUNCTION POINT DESCRIPTIONS

POINT	THE FOLLOWING MATERIALS ARE TO BE SUPPLIED AND INSTALLED BY THE CUSTOMER'S ELECTRICAL CONTRACTOR			
	DESCRIPTION	QTY.	HARDWARE	DETAIL NO., SH. E3
A	MAIN DISCONNECT AVAILABLE FROM GEHC. CALL 800-558-5102 OR LOCAL GE INSTALLATION PROJECT MGR.	1	110-AMP CIRCUIT BREAKER PANEL. GEMS CAT. NO. E4502JD OR WITH AUTO RESTART FEATURE-E4502KJ. EMERGENCY OFF PUSHBUTTON STATION IS INCLUDED.	ELEC-15
DLK1	DOOR SWITCH	1	ROOM DOOR INTERLOCK LIMIT SWITCH IN FRAME - NORMALLY OPEN (24V) SINGLE GANG BOX	
DSA	DETECTOR SUPPORT ASSEMBLY	1	CONNECT EXTERNALLY	
RT	TABLE	2	1 1/4 IN. DIA. BUSHING & LOCKNUT 1 1/4 IN. DIA. SHORT NIPPLE	ELEC-25
SEO	EMERGENCY OFF	1	PROVIDE A SINGLE GANG, 2 1/8 IN. DEEP, FLUSH MTD. WALL BOX.	ELEC-126 ELEC-138
SKL	SYSTEMS CABINET	1	32 IN. OF GROMMET MATERIAL FOR AN 8 X 8 IN. OPENING IN DUCT COVER	ELEC-5 ELEC-6
WBC1	OPERATORS CONSOLE	1	10 X 10 X 4 IN. BOX	ELEC-28
WLS	CHEST UNIT	1	SPLIT COVERPLATE 1 1/2 IN. DIA. CHASE NIPPLE 1 1/2 IN. DIA. CHASE NIPPLE 1 6 X 6 X 1/2 IN. BOX WITH DIVIDER	ELEC-79
XRL1	WARNING LIGHT	1	SINGLE GANG BOX X-RAY ON INCANDESCENT LIGHT FIXTURE. 24V, 8 AMP OR LESS LOW VOLTAGE SOURCE. DO NOT USE FLUORESCENT FIXTURES.	
XRLC	WARNING LIGHT CONTROLLER AVAILABLE FROM GEHC. CALL 800-558-5102 OR LOCAL GE INSTALLATION PROJECT MGR.	1	E4500AM WARNING LIGHT CONTROL OR EQUIVALENT MAX 24V CONTROLLER	ELEC-72
XTS1	X-RAY TUBE HANGER	1	32 IN. OF GROMMET MATERIAL FOR AN 8 X 8 IN. OPENING IN DUCT COVER	ELEC-5 ELEC-6

JEDI 80kw SYSTEMS CABINET REV. DATE: 02/25/06

• CALCULATIONS BASED UPON NOMINAL VOLTAGE, WIRE SIZE IN AWG.
 • RECOMMENDED FEEDER SIZES FROM DISTRIBUTION TRANSFORMER TO THE POWER CABINET
 • NEUTRAL MUST BE TERMINATED INSIDE THE MAIN DISCONNECT PANEL AND NOT AT ANY GE CABINET.
 • THE GROUNDING CONDUCTOR WILL BE OF SAME SIZE AS THE FEEDER. THIS GROUND WILL RUN FROM THE EQUIPMENT BACK TO THE FACILITY POWER SOURCE/MAIN GROUNDING POINT AND ALWAYS TRAVEL IN THE SAME CONDUIT WITH THE FEEDERS AND NEUTRAL.
 • MINIMUM WIRE SIZE FOR CIRCUIT BREAKER, BASED ON RECOMMENDED OVERCURRENT PROTECTION.
 • FOR A FULL SYSTEM UPS, REFER TO ELECTRICAL DETAILS FOR UPS FEEDER WIRES.

RUN LENGTH IN FEET	POWER SUPPLY VOLTAGE					
	342-418 380	360-440 400	373-454 420	398-484 440	414-508 460	432-528 480
50	* 2	* 2	* 2	* 2	* 2	* 2
100	* 2	* 2	* 2	* 2	* 2	* 2
150	1/0	1	1	* 2	* 2	* 2
200	2/0	2/0	1/0	1/0	1	1
250	3/0	3/0	2/0	2/0	1/0	1/0
300	4/0	4/0	3/0	3/0	2/0	2/0
350	300M	250M	4/0	4/0	3/0	3/0
400	350M	300M	250M	4/0	4/0	3/0
450	400M	350M	300M	250M	250M	4/0

Drawn by: Pajo Girley Octel no.: 3202043
 GE Installation
 Project Manager: JIM DOMBROSKI
 Telephone no.: 603-934-3739

GE Healthcare Technologies
 Installation Services Design Center
 Milwaukee, Wisconsin

SHEET TITLE: ELECTRICAL LAYOUT
 MODALITY TYPE: DEFINUM 8000

THIS PLAN IS SUBMITTED TO SUGGEST LOCATION OF GE HEALTHCARE EQUIPMENT AND ASSOCIATED APPARATUS. ELECTRICAL WIRING DETAILS AND ROOM ARRANGEMENTS ARE THE RESPONSIBILITY OF THE ARCHITECT. GE HEALTHCARE MAKES NO WARRANTY FOR THE ACTUAL EQUIPMENT EXPECTED TO BE INSTALLED. GE HEALTHCARE ACCEPTS NO LIABILITY FOR ANY DAMAGES RESULTING THEREFROM.

PROJECT TITLE:
**MERCY HOSPITAL
 FORE RIVER**
 PORTLAND, MAINE

PROJECT	REVISION
065693	00
DATE:	09-15-06
DRAWN BY:	PG
CHECKED BY:	TST
QUOTE NO.:	attached
QT. DATE:	09-07-06

REVISION HISTORY:

SHEET
E1