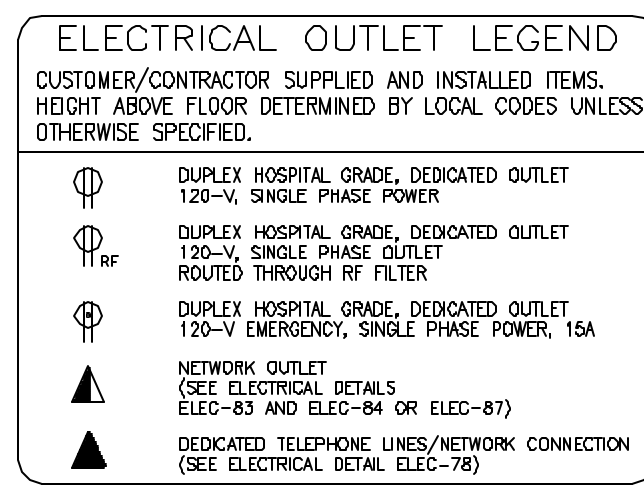
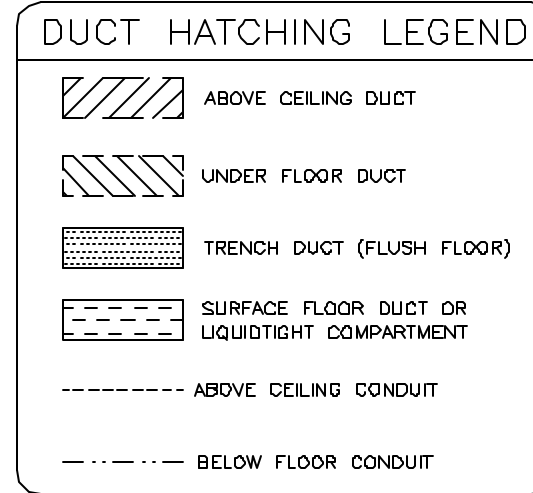


SCALE: 1/4" = 1'-0"

THIS SHEET IS PART OF THE DOCUMENT SET LISTED ON SHEET C1 AND SHOULD NOT BE SEPARATED. ALL SHEETS IN THIS DOCUMENT SET CONTAIN ELECTRICAL INFORMATION AND REFERENCES.

ELECTRICAL PLAN

RECOMMENDED CEILING HEIGHT = 8'-9"

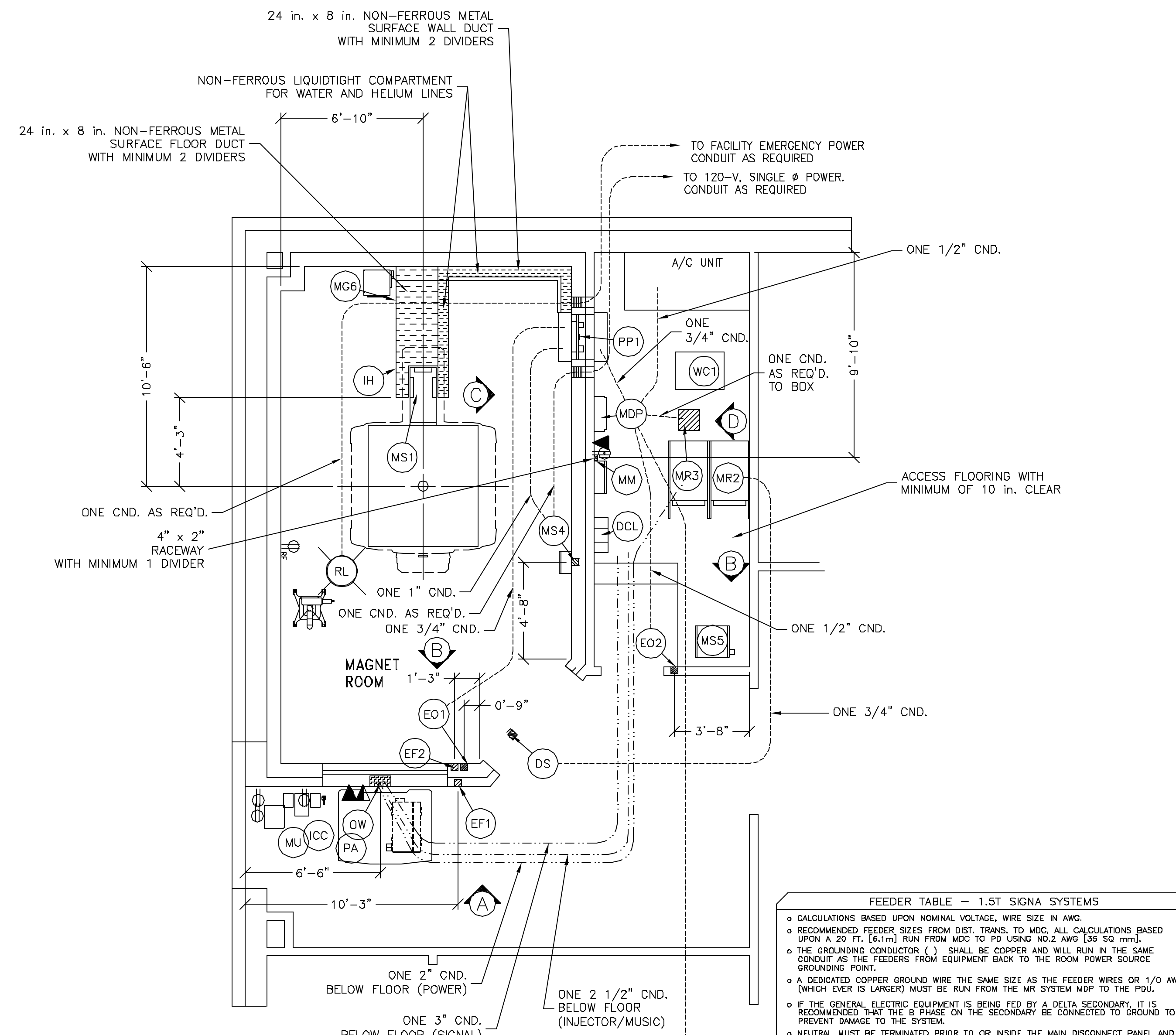
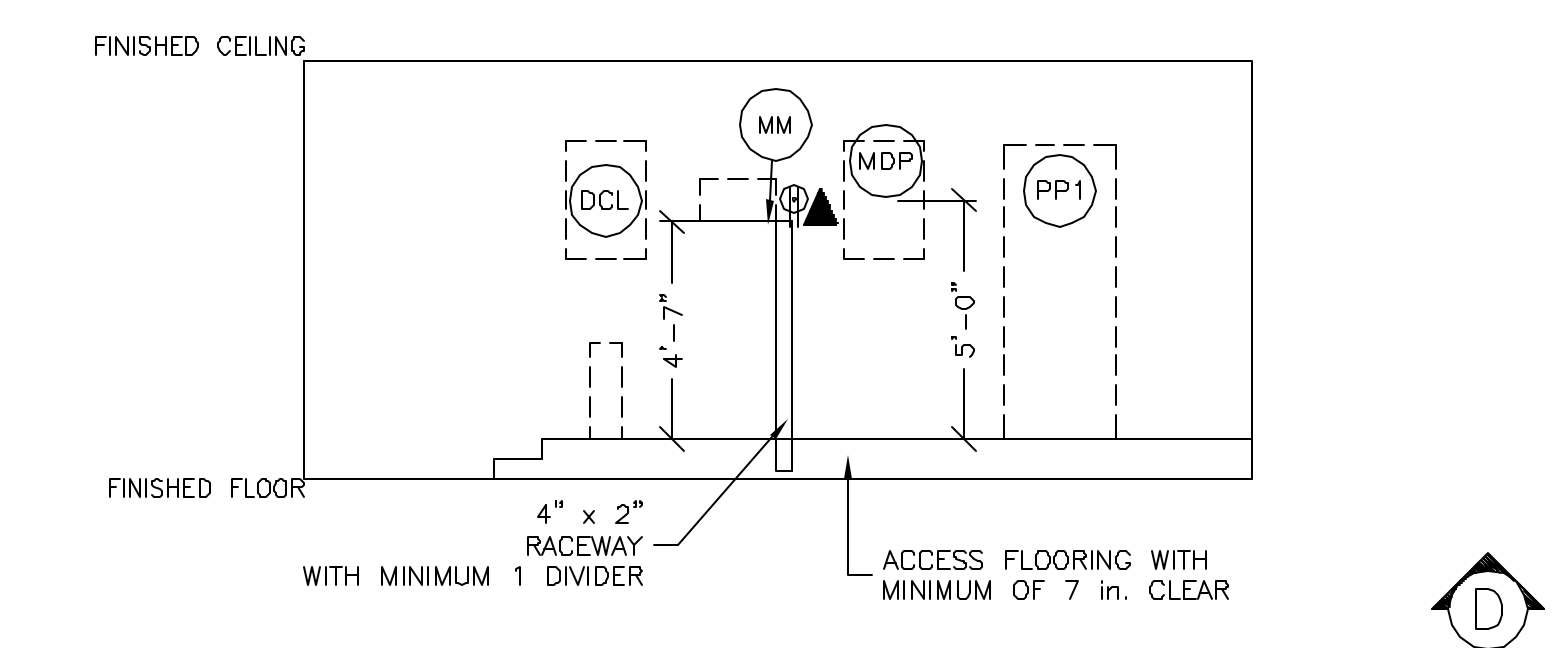
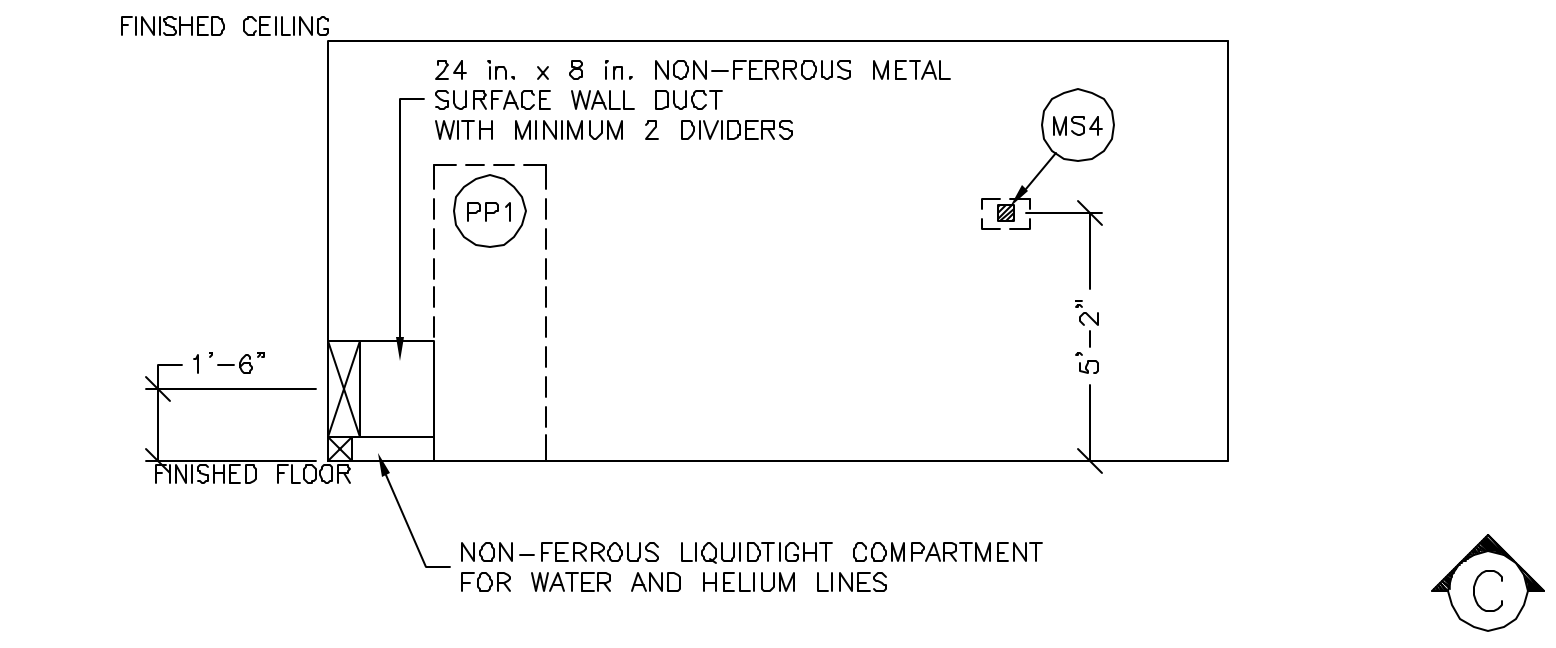
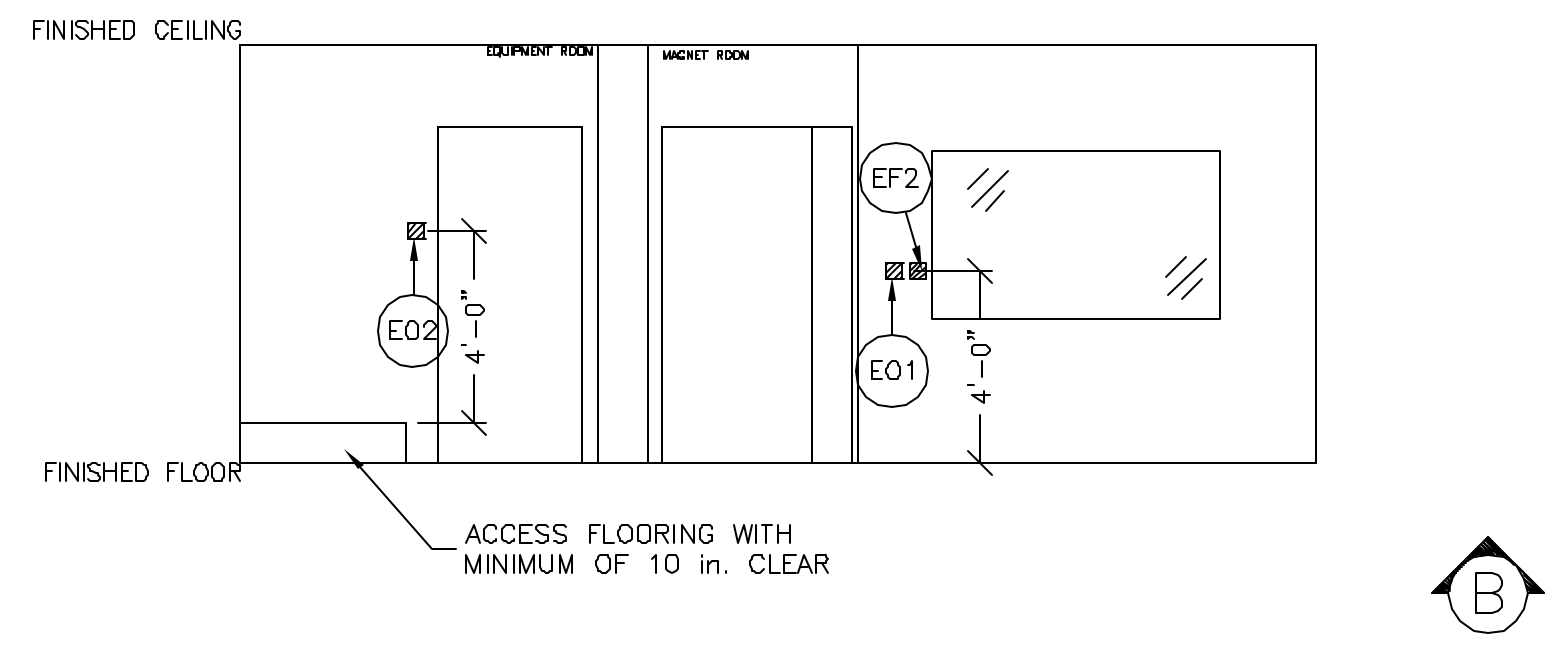
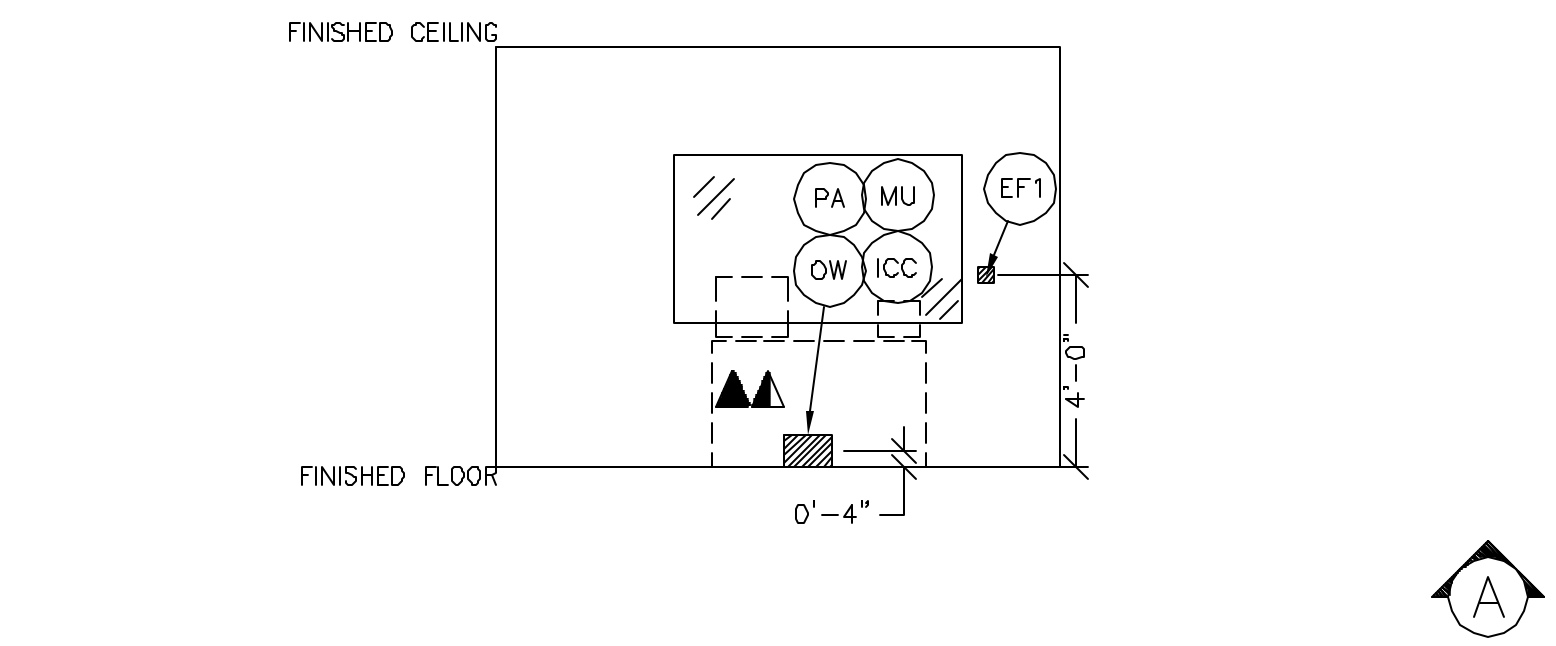


JUNCTION POINT NOTES

- ALL JUNCTION BOXES, CONDUIT, DUCT, DUCT DIVIDERS, SWITCHES, CIRCUIT BREAKERS, ETC., ARE TO BE SUPPLIED AND INSTALLED BY CUSTOMER'S ELECTRICAL CONTRACTOR.
- CONDUIT AND DUCT RUNS SHALL HAVE SWEEP RADIUS BENDS
- CONDUITS AND DUCT ABOVE CEILING OR BELOW FINISHED FLOOR MUST BE INSTALLED AS NEAR TO CEILING OR FLOOR AS POSSIBLE TO REDUCE RUN LENGTH.
- CEILING MOUNTED JUNCTION BOXES ILLUSTRATED ON THIS PLAN MUST BE INSTALLED FLUSH WITH FINISHED CEILING.
- ALL DUCTWORK MUST MEET THE FOLLOWING REQUIREMENTS:
 - DUCTWORK SHALL BE METAL WITH DIVIDERS AND HAVE REMOVABLE, ACCESSIBLE COVERS.
 - DUCTWORK SHALL BE CERTIFIED/RATED FOR ELECTRICAL POWER PURPOSES.
 - DUCTWORK SHALL BE ELECTRICALLY AND MECHANICALLY BONDED TOGETHER IN AN APPROVED MANNER.
 - PVC AS A SUBSTITUTE MUST BE USED IN ACCORDANCE WITH ALL LOCAL AND NATIONAL CODES.
- ALL OPENINGS IN ACCESS FLOORING ARE TO BE CUT OUT AND FINISHED OFF WITH GROMMET MATERIAL BY THE CUSTOMER'S CONTRACTOR.
- GENERAL CONTRACTOR TO INSERT PULL CORDS FOR ALL CABLE RUN CONDUITS BETWEEN THE EQUIPMENT ROOM AND THE OPERATORS CONTROL ROOM.

JUNCTION POINT DESCRIPTIONS

| POINT | DESCRIPTION | QTY. | HARDWARE | DETAIL NO., SH. E3 |
|-------|---------------------------|------|--|--------------------------------|
| DCL | DC LIGHTING | 1 | SEE DETAILS AVAILABLE FROM GEMSS - CALL 800-555-1102 OR LOCAL GE PROJECT MGR. INSTALLATION | ELEC-51 ELEC-54 |
| DS | RF DOOR SWITCH | 1 | SINGLE GANG BOX RF DOOR SWITCH RATED FOR 84 VOLTS AND 750 MILLIAMPERES, NORMALLY OPEN (OFF) WHEN DOOR IS OPEN | ELEC-55 |
| EF1 | RF EXHAUST FAN SWITCH | 1 | COVERPLATE SINGLE GANG BOX SINGLE POLE SWITCH | ELEC-55 |
| EF2 | RF EXHAUST FAN SWITCH | 1 | COVERPLATE SINGLE GANG BOX SINGLE POLE SWITCH | ELEC-55 |
| E01 | EMERGENCY OFF BUTTON | 1 | SINGLE GANG BOX | ELEC-16 |
| E02 | EMERGENCY OFF BUTTON | 1 | SINGLE GANG BOX | ELEC-16 |
| ICC | INJECTOR DISPLAY | 1 | SAME ROUTING AS DW | ELEC-10 |
| IH | INJECTOR HEAD | 1 | 12 IN. OF GROMMET MATERIAL FOR A 3 X 3 IN. OPENING IN ACCESS FLOOR OR DUCT | ELEC-57 ELEC-10 ELEC-140 |
| MDP | MAIN DISCONNECT | 1 | 12 IN. GROMMET MATERIAL FOR OPENING IN DUCT OR ACCESS FLOOR PANEL - INCLUDED IN ORDER | ELEC-57 ELEC-10 ELEC-140 |
| MG6 | BLOWER BOX | 1 | 40 IN. OF GROMMET MATERIAL FOR A 12 X 8 IN. OPENING IN DUCT COVER | ELEC-14 |
| MM | MAGNET MONITOR | 1 | FITTINGS AS REQUIRED | ELEC-78 |
| MR2 | RFS CABINET | 1 | 28 IN. OF GROMMET MATERIAL FOR ONE 10 X 4 IN. OPENING IN ACCESS FLR. | ELEC-10 |
| MR3 | HFD/PDU CABINET | 1 | SPLIT COVERPLATE 1 1/2 IN. DIA. CHASE NIPPLE 180 X 120 X 8 IN. BOX 16 X 10 IN. OPENING IN ACCESS FLR. | ELEC-10 ELEC-199 |
| MS1 | MAGNET | 1 | 78 IN. GROMMET MATERIAL | ELEC-14 |
| MS4 | MAGNET RUNDOWN UNIT | 1 | COVERPLATE 4 X 4 X 4 IN. BOX 1 IN. DIA. CHASE NIPPLE | ELEC-8 |
| MS5 | SHIELD COOLER CABINET | 1 | 22 IN. OF GROMMET MATERIAL FOR AN 8 X 8 IN. OPENING IN ACCESS FLOOR | ELEC-10 |
| MU | MUSIC SYSTEM | 1 | SAME ROUTING AS DW | ELEC-7 |
| DW | OPERATOR WORKSPACE | 1 | SPLIT COVERPLATE 1 1/2 IN. DIA. CHASE NIPPLE 12 IN. X 8 IN. X 6 IN. BOX | ELEC-7 |
| PA | PATIENT ALERT CONTROL BOX | 1 | SAME ROUTING AS DW | ELEC-52 |
| PP1 | RF PENETRATION PANEL | 1 | 206 IN. OF GROMMET MATERIAL | ELEC-52 |
| RL | MAGNET ROOM LIGHTS | 1 | LOCKNUT BOX AS REQUIRED INCANDESCENT LIGHT FIXTURE | ELEC-10 |
| VC1 | WATER CHILLER | 1 | 12 IN. OF GROMMET MATERIAL FOR A 3 X 3 IN. OPENING IN ACCESS FLOOR | ELEC-10 |
| MBP | MAINTENANCE | 1 | FLEXIBLE CONDUIT AS REQUIRED | ELEC-118 |
| UPS | UNINTERRUPTIBLE | 1 | CONNECT EXTERNALLY | ELEC-118 |

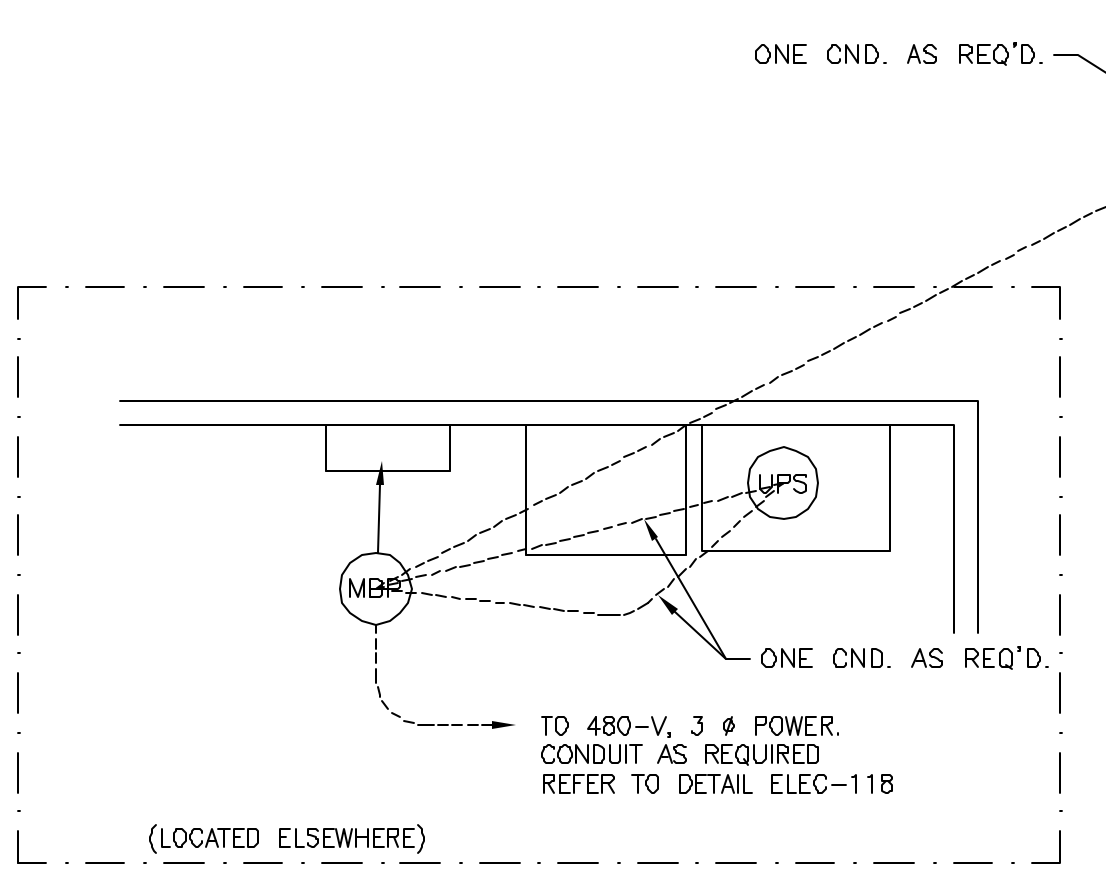


FEEDER TABLE - 1.5T SIGNA HDX

o CALCULATIONS BASED UPON NOMINAL VOLTAGE, WIRE SIZE IN AWG.
o RECOMMENDED FEEDER SIZES FROM DIST. TRANS. TO MDG. ALL CALCULATIONS BASED UPON A 20 FT. (6.1m) RUN FROM MDG TO PD USING NO.2 AWG (35 SQ. MM).
o THE GROUNDING CONDUCTOR (1) SHALL BE COPPER AND WILL RUN IN THE SAME CONDUIT AS THE FEEDERS FROM EQUIPMENT BACK TO THE ROOM POWER SOURCE GROUNDING POINT.
o A DEDICATED COPPER GROUND WIRE THE SAME SIZE AS THE FEEDER WIRES OR 1/0 AWG (WHICH EVER IS LARGER) MUST BE RUN FROM THE MR SYSTEM MDP TO THE PDU.
o IF THE GENERAL ELECTRIC EQUIPMENT IS BEING FED BY A DELTA SECONDARY, IT IS RECOMMENDED THAT THE 0 PHASE ON THE SECONDARY BE CONNECTED TO GROUND TO PREVENT DAMAGE TO THE SYSTEM.
o NEUTRAL MUST BE TERMINATED PRIOR TO OR INSIDE THE MAIN DISCONNECT PANEL AND NOT BROUGHT INTO THE ACSS/PDU CABINET.
o FOR A FULL SYSTEM UPS REFER TO ELECTRICAL DETAILS FOR UPS FEEDER WIRES.

| RUN LENGTH IN FEET | 342-418 380 | | | | 360-440 400 | | | | 374-456 416 | | | | 432-528 480 | | | |
|--------------------|----------------|--------|--------|--------|----------------|--------|--------|--------|----------------|--------|--------|--------|----------------|--------|--|--|
| | FEEDER | GROUND | FEEDER | GROUND | FEEDER | GROUND | FEEDER | GROUND | FEEDER | GROUND | FEEDER | GROUND | FEEDER | GROUND | | |
| 100 | 1 | 6 | 3 | 4 | 3 | 4 | 3 | 4 | 3 | 4 | 3 | 4 | 3 | 4 | | |
| 150 | 1 | 8 | 3 | 4 | 3 | 4 | 3 | 4 | 3 | 4 | 3 | 4 | 3 | 4 | | |
| 200 | 1 | 8 | 2 | 4 | 2 | 4 | 2 | 4 | 2 | 4 | 2 | 4 | 2 | 4 | | |
| 250 | 1/0 | 6 | 1/0 | 6 | 1 | 6 | 1 | 6 | 2 | 8 | | | | | | |
| 300 | 2/0 | 4 | 2/0 | 6 | 1/0 | 6 | 1 | 6 | | | | | | | | |
| 350 | 3/0 | 4 | 2/0 | 6 | 2/0 | 6 | 1 | 6 | | | | | | | | |
| 400 | 4/0 | 4 | 3/0 | 4 | 3/0 | 4 | 1/0 | 6 | | | | | | | | |
| 450 | 4/0 | 2 | 4/0 | 2 | 3/0 | 4 | 2/0 | 4 | | | | | | | | |

REV. DATE: 04/05/08



Drawn by: Paul Merchen Octel no.: 3204579
 GE Installation
 Project Manager: JIM DOMBROSKI
 Telephone no.: 603-934-3739

CONTRACTOR SUPPLIED AND INSTALLED WIRING

ELECTRICAL CONTRACTOR SHALL RING OUT AND TAG ALL WIRES AT BOTH ENDS.

| WIRE RUN, FROM - TO | QUANTITY, WIRE SIZE/COLOR |
|-------------------------|--|
| MR3 > RF GROUND STUD | 1-GREEN (NO. 1/0 MINIMUM) |
| MDP > MR3 | 3-NO. 2 BLACK, 1-NO. 1/0 GREEN (MAX. 20 FT. (6.095MM)) |
| MDP > A/C UNIT | 1-NO. 12 BLACK, 1-NO. 12 WHITE, 1-NO. 12 GREEN |
| MDP > E02 | 1-BLACK, 1-RED, 1-GREEN - (SIZE AS REQUIRED) |
| RF FAN > EF1 | 1-BLACK, 1-WHITE - (SIZE AS REQUIRED) |
| EF1 > EF2 | 1-BLACK, 1-WHITE - (SIZE AS REQUIRED) |
| RF FILTER > MS4 | 1-BLACK, 1-WHITE, 1-GREEN - (SIZE AS REQUIRED) |
| 120-V > RF FILTER | 1-BLACK, 1-WHITE, 1-GREEN - (SIZE AS REQUIRED) |
| RF FILTER > RL | 1-BLACK, 1-WHITE, 1-GREEN - (SIZE AS REQUIRED) |
| CONVERTER > RF FILTER | 1-BLACK, 1-WHITE, 1-GREEN - (SIZE AS REQUIRED) |
| EMERG PWR > CONVERTER | 1-BLACK, 1-WHITE, 1-GREEN - (SIZE AS REQUIRED) |
| RF GND STUD > RF FILTER | 1-GREEN (SIZE AS REQUIRED FOR EACH FILTER) |
| 3 PHASE > MBP | 4-BLACK, 1-GREEN (SIZE AS REQUIRED) |
| MBP > UPS (FEED IN) | 4-BLACK, 1-GREEN (SIZE AS REQUIRED) |
| MBP > UPS (FEED OUT) | 4-BLACK, 1-GREEN (SIZE AS REQUIRED) |
| MBP > MDP | 3-BLACK, 1-GREEN - REFER TO FEEDER TABLE |

This drawing is based on Sketch No.: 06NEF026

GE Healthcare Technologies
 Installation Services Design Center
 Milwaukee, Wisconsin

SHEET TITLE: ELECTRICAL LAYOUT
 MODALITY TYPE: 1.5T SIGNA HDX
 THIS PLAN IS SUBMITTED TO SUGGEST LOCATION OF GE HEALTHCARE EQUIPMENT AND ASSOCIATED APPLIANCE, ELECTRICAL WIRING DETAILS AND ROOM ARRANGEMENTS. IN PREPARING THIS PLAN, EVERY EFFORT HAS BEEN MADE TO CONFORM TO ALL APPLICABLE CODES AND REGULATIONS. HOWEVER, THE COMPANY CANNOT ACCEPT RESPONSIBILITY FOR ANY DAMAGES RESULTING THEREFROM.

PROJECT TITLE:
**MERCY HOSPITAL
 FORE RIVER
 PORTLAND, MAINE**

| PROJECT | REVISION |
|---------|----------|
| 065904 | 00 |

DATE: 10/4/06
 DRAWN BY: PMM
 CHECKED BY: PMM
 QUOTE NO: KX1CB7
 QT. DATE: 9/25/06

REVISION HISTORY:

| |
|--|
| |
| |
| |
| |

SHEET
E1