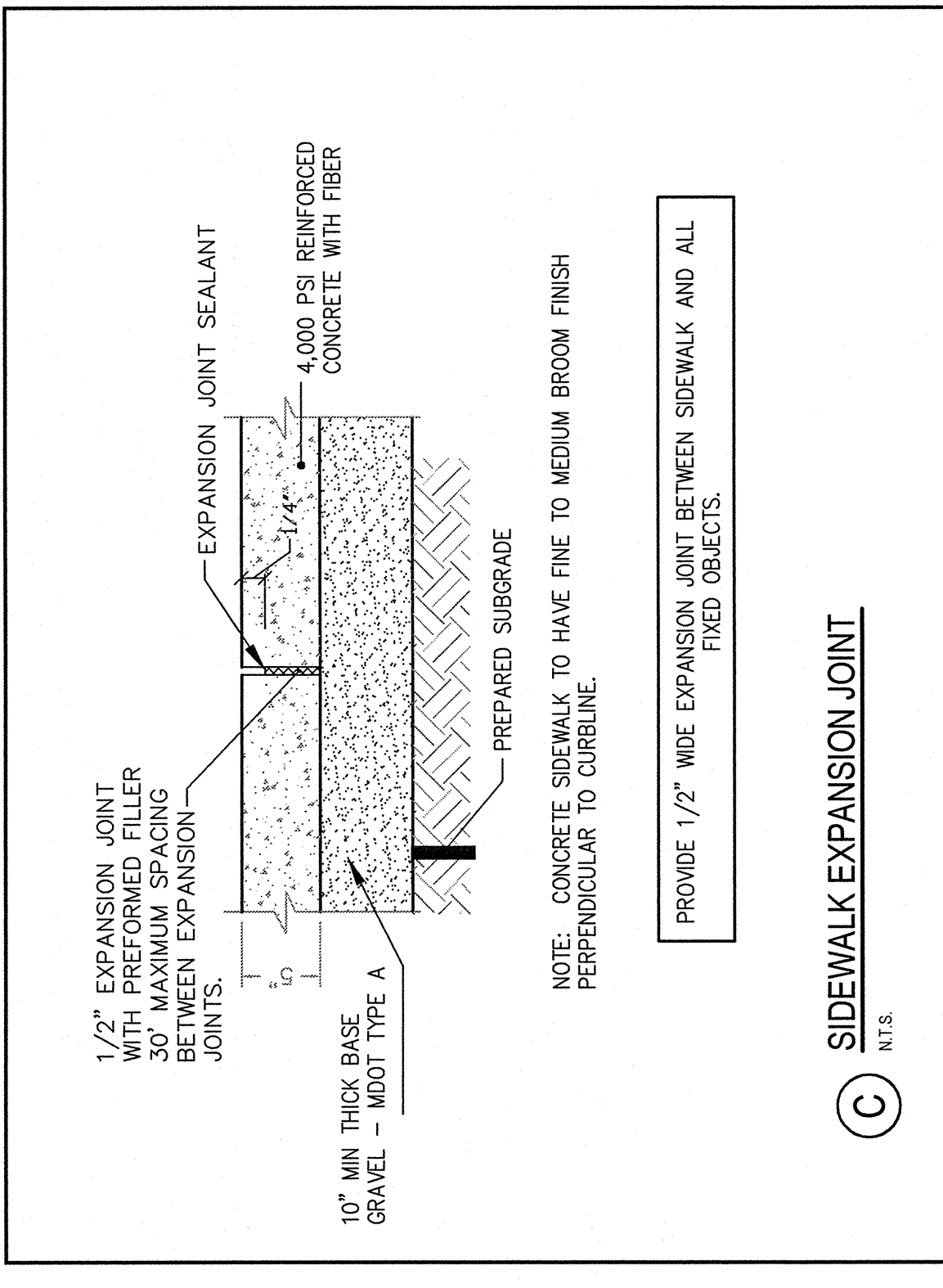
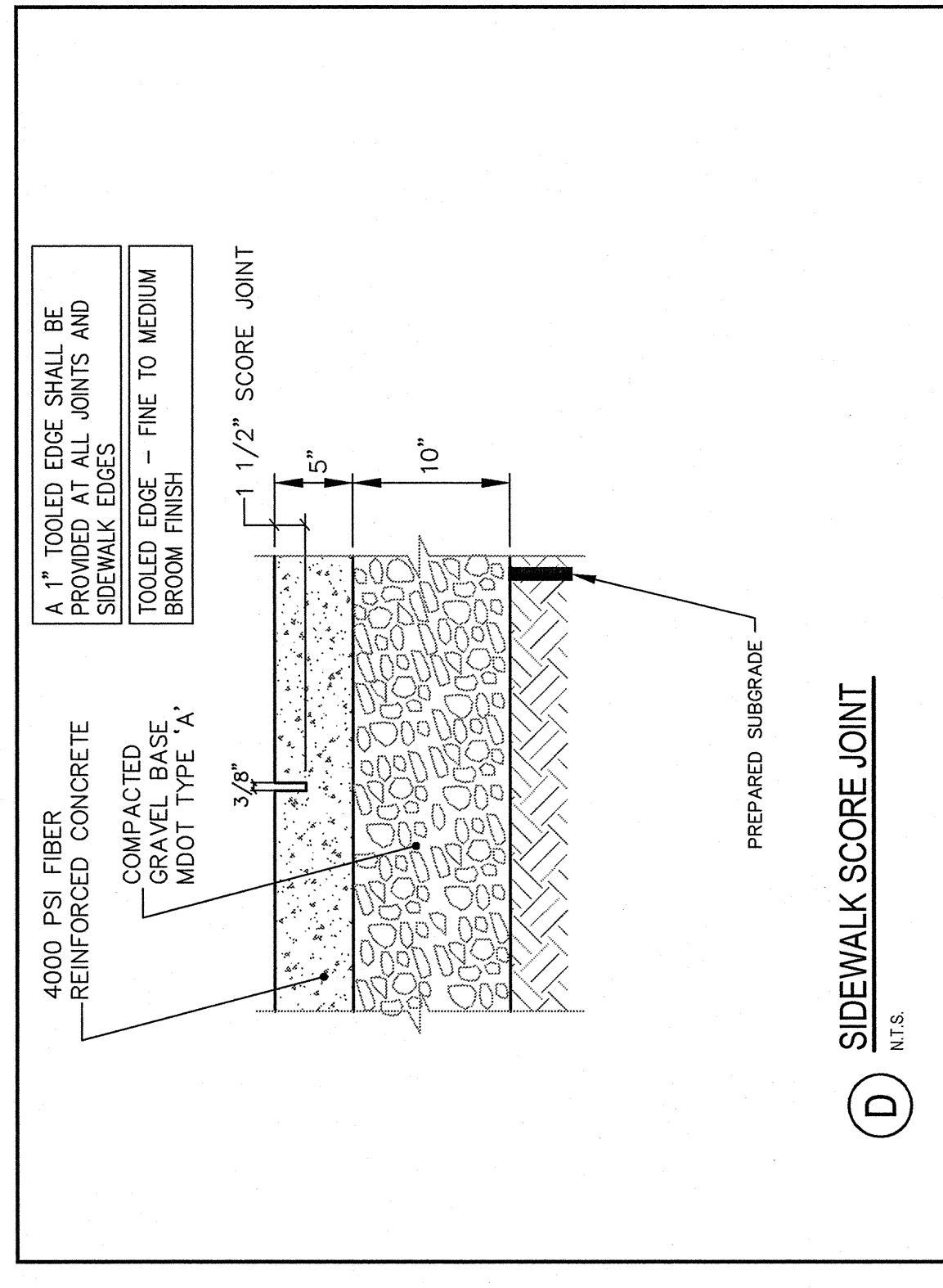


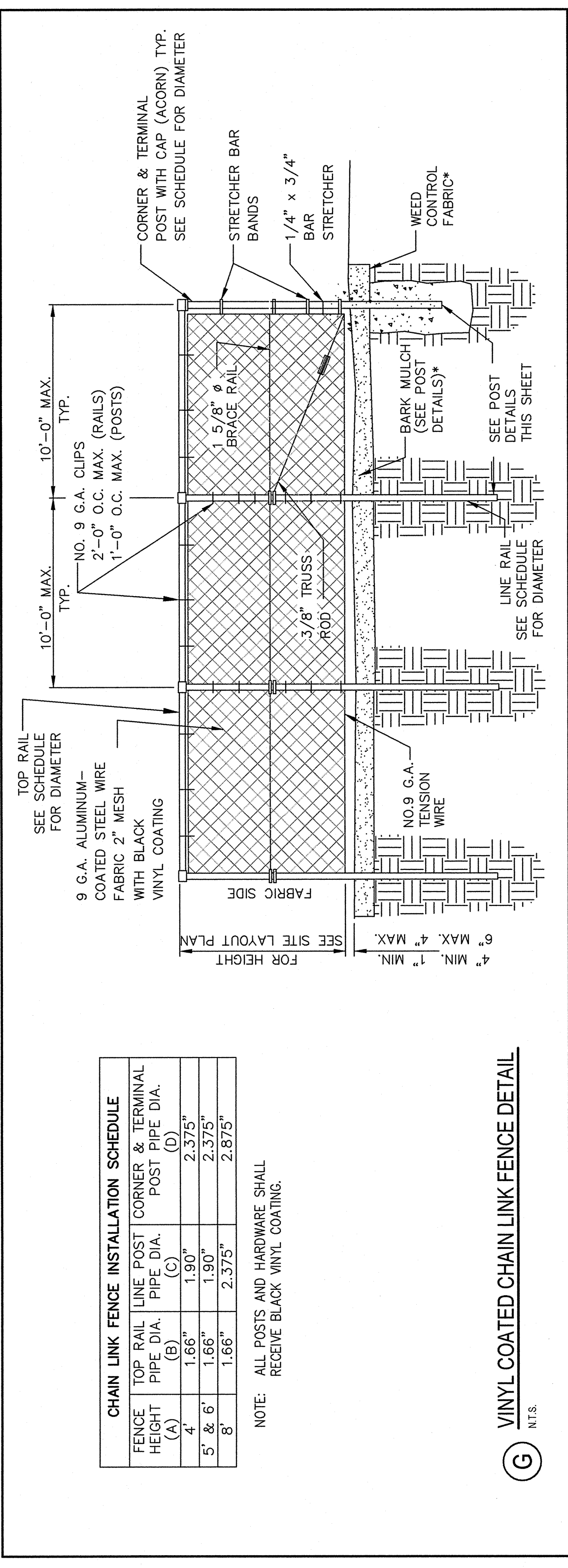
(A) PEDESTRIAN FLASHER N.I.C.
N.T.S.



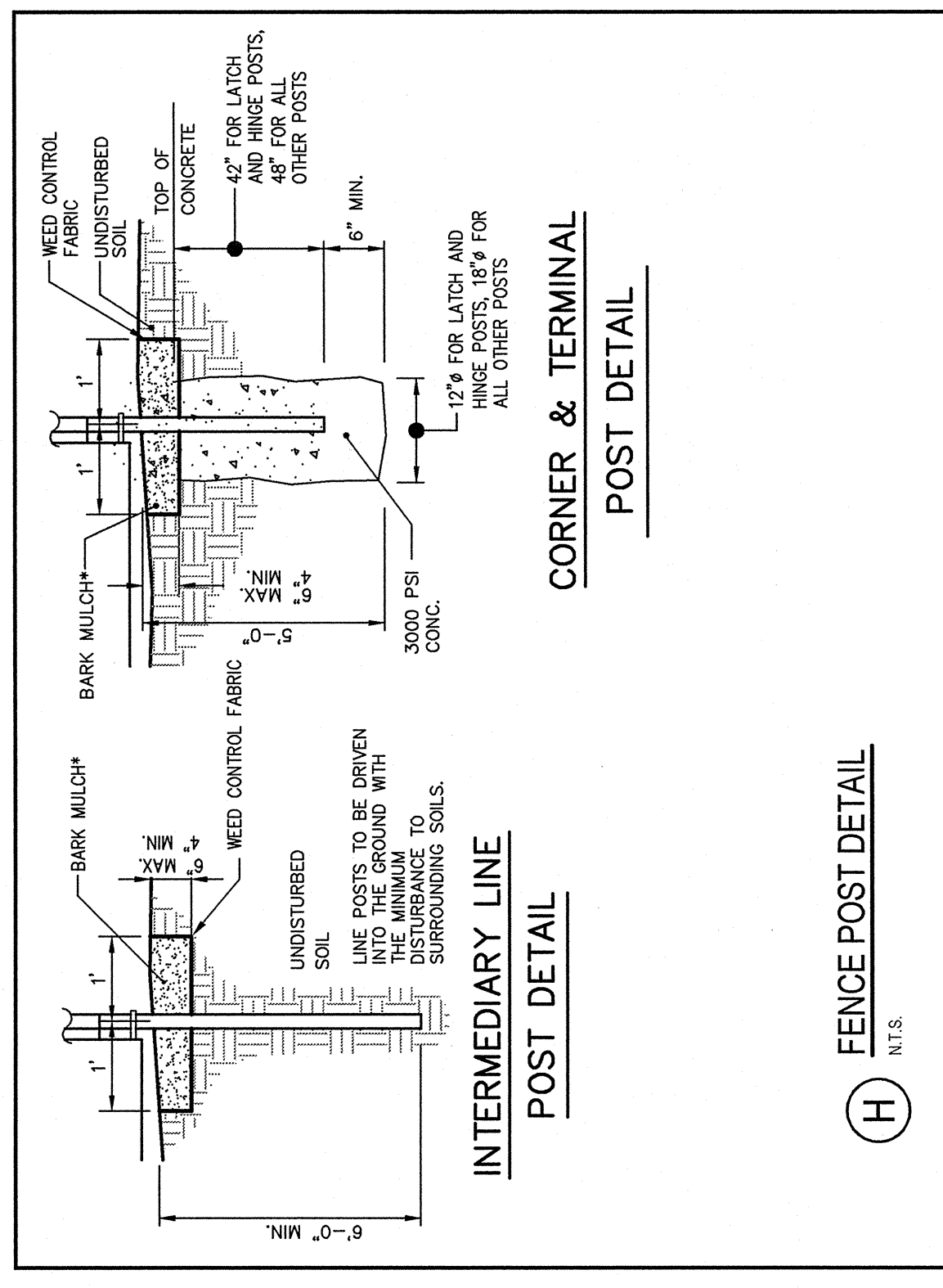
(C) SIDEWALK EXPANSION JOINT
N.T.S.



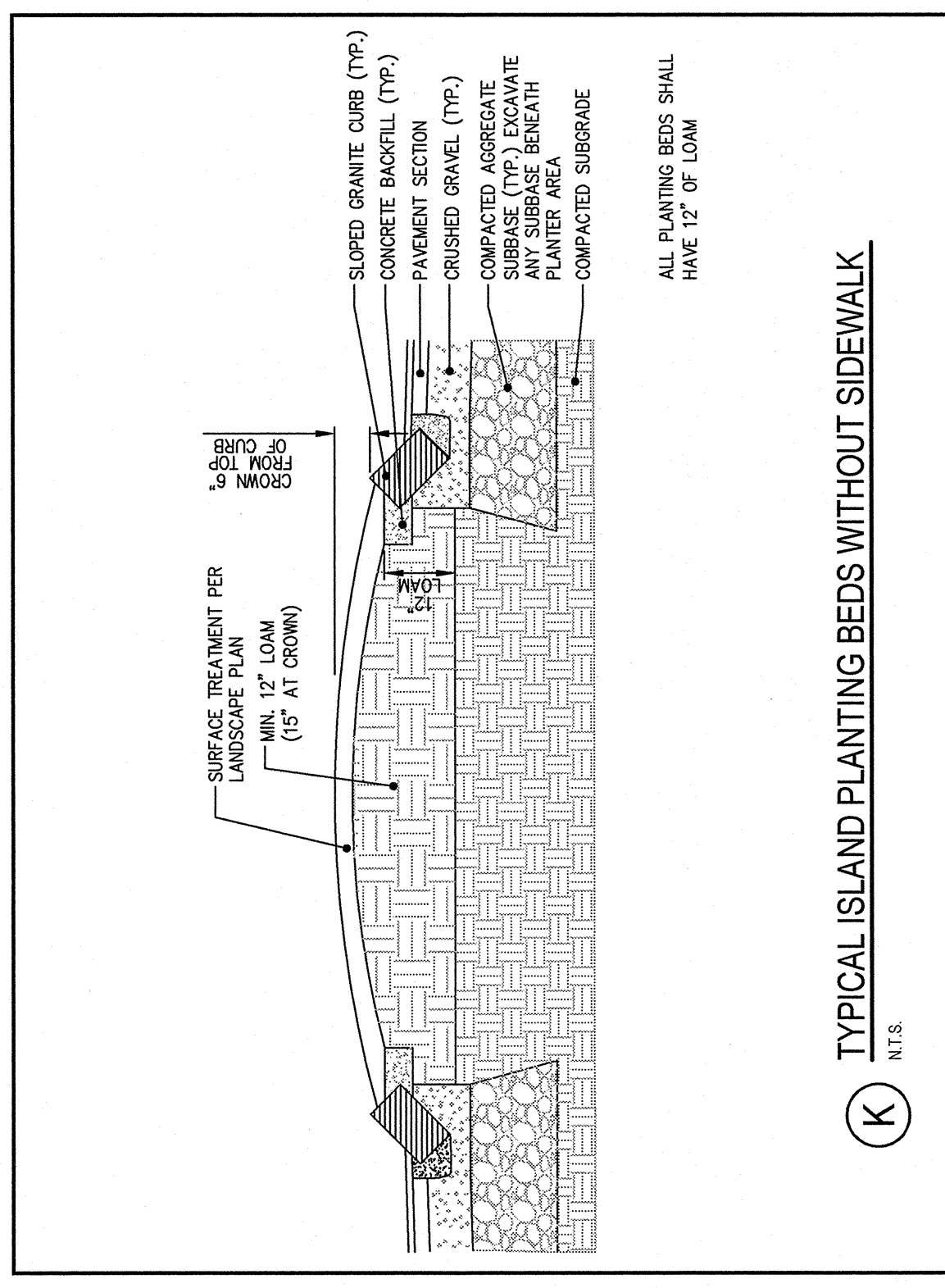
(D) SIDEWALK SCORE JOINT
N.T.S.



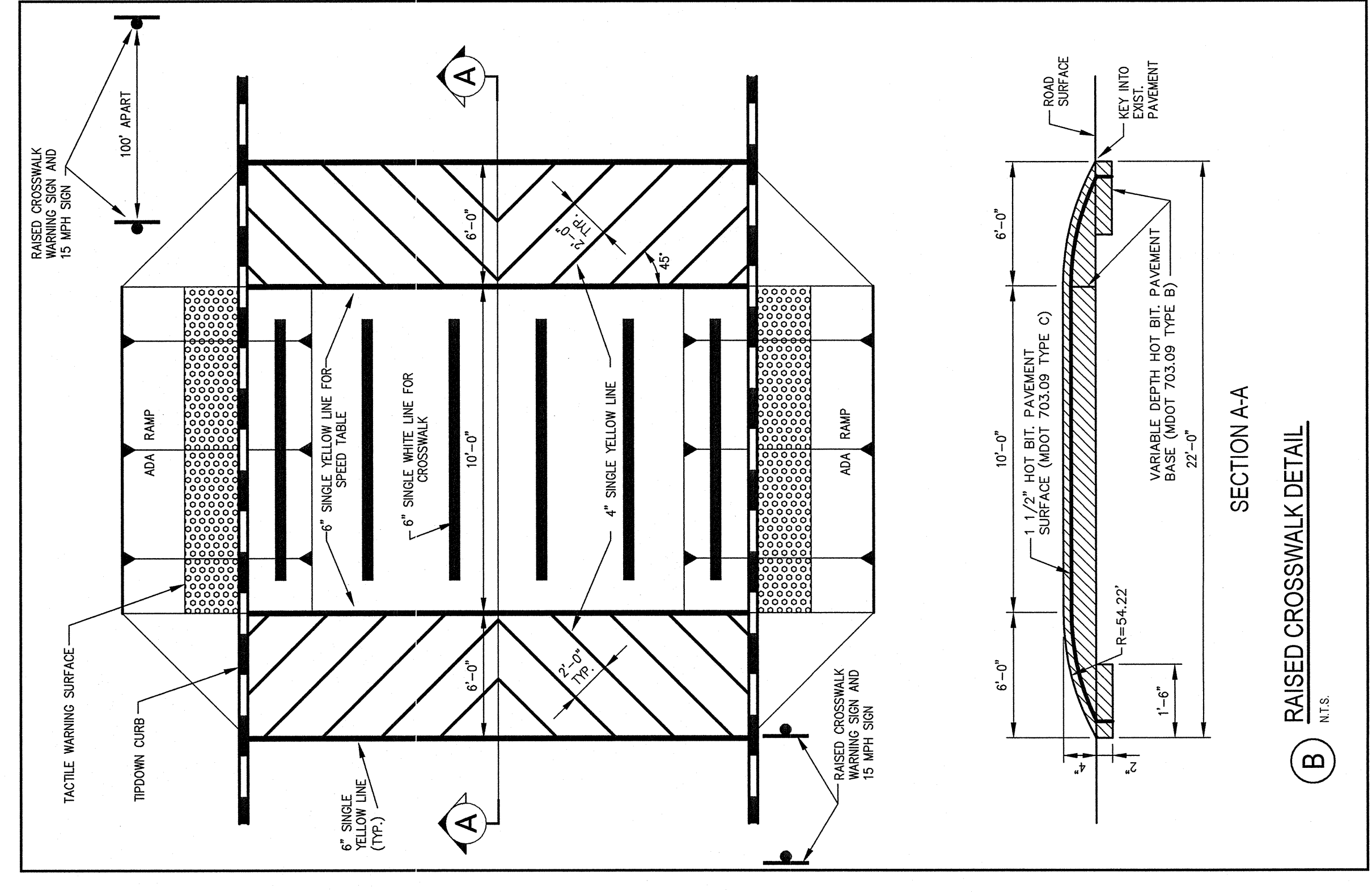
(C) VINYL COATED CHAIN LINK FENCE DETAIL
N.T.S.



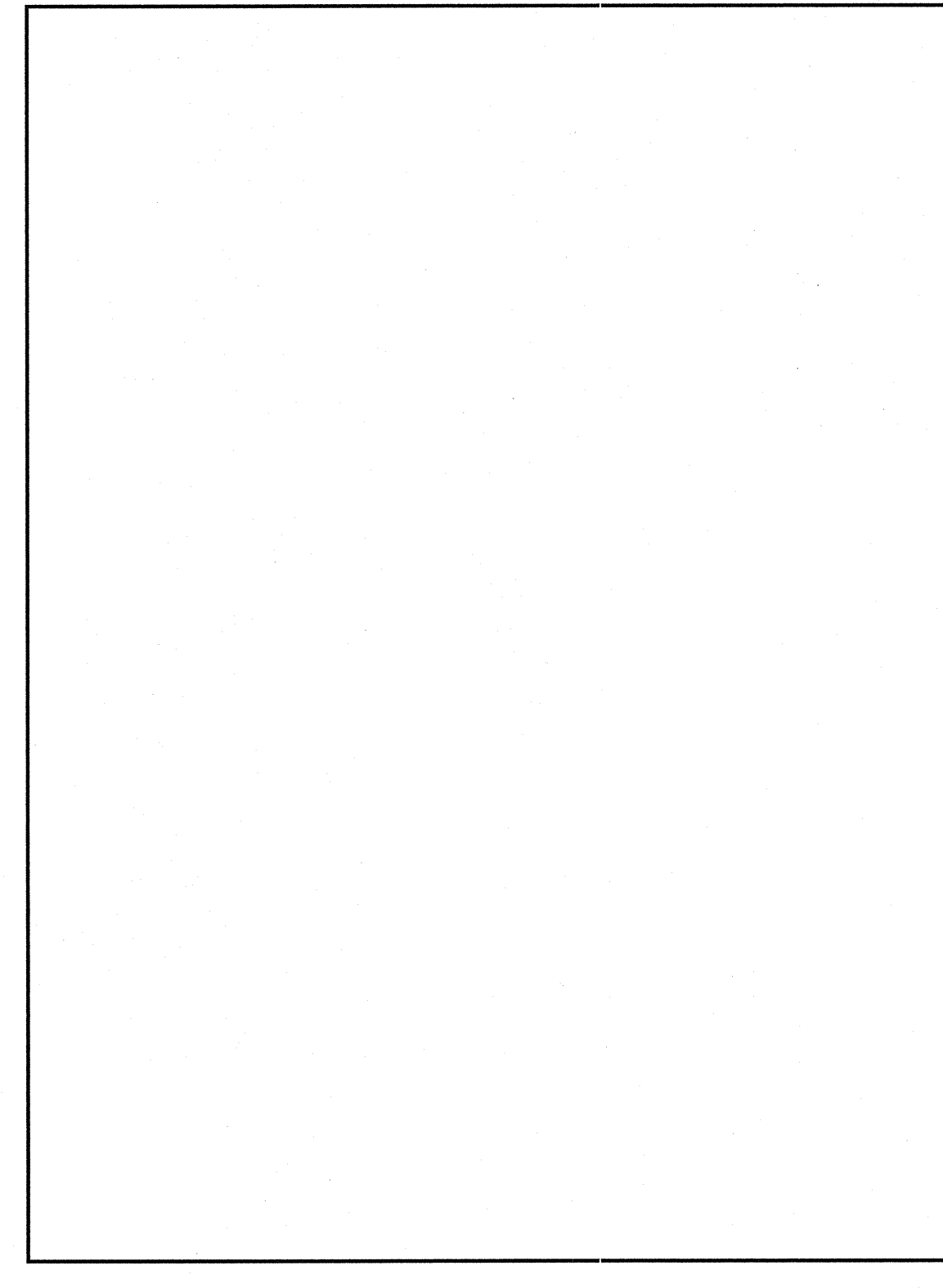
(H) FENCE POST DETAIL
N.T.S.



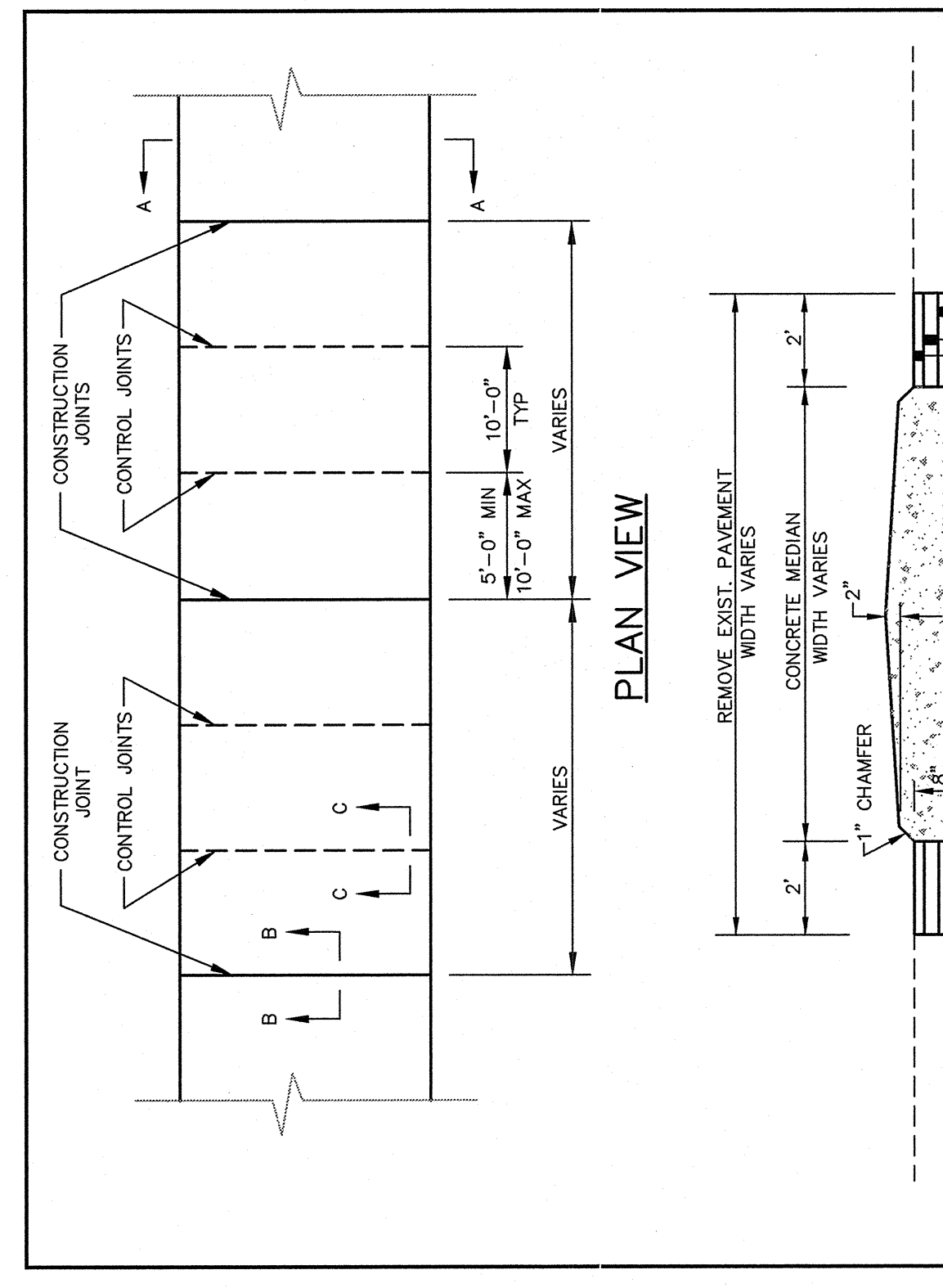
(K) TYPICAL ISLAND PLANTING BEDS WITHOUT SIDEWALK
N.T.S.



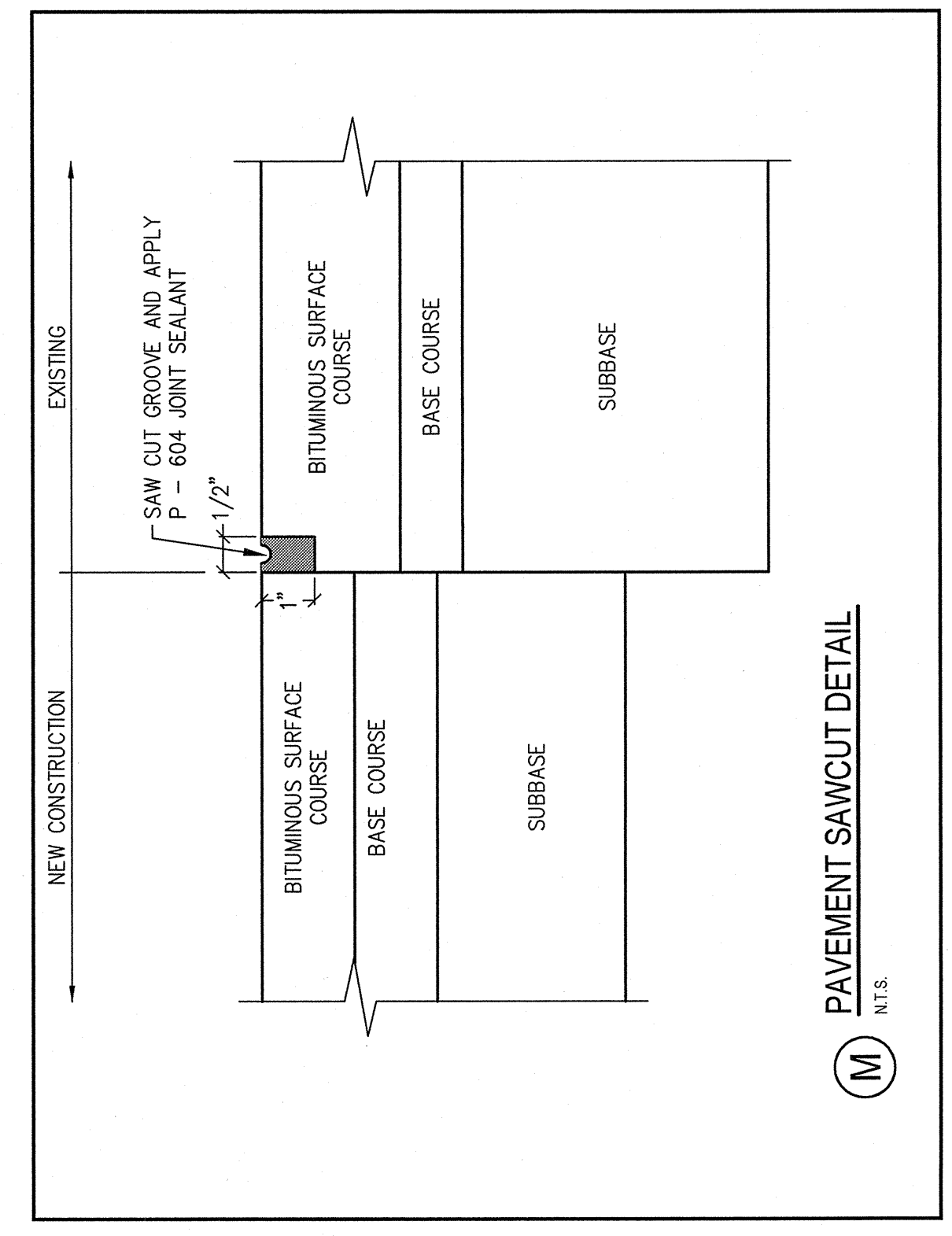
(A) PEDESTRIAN FLASHER N.I.C.
N.T.S.



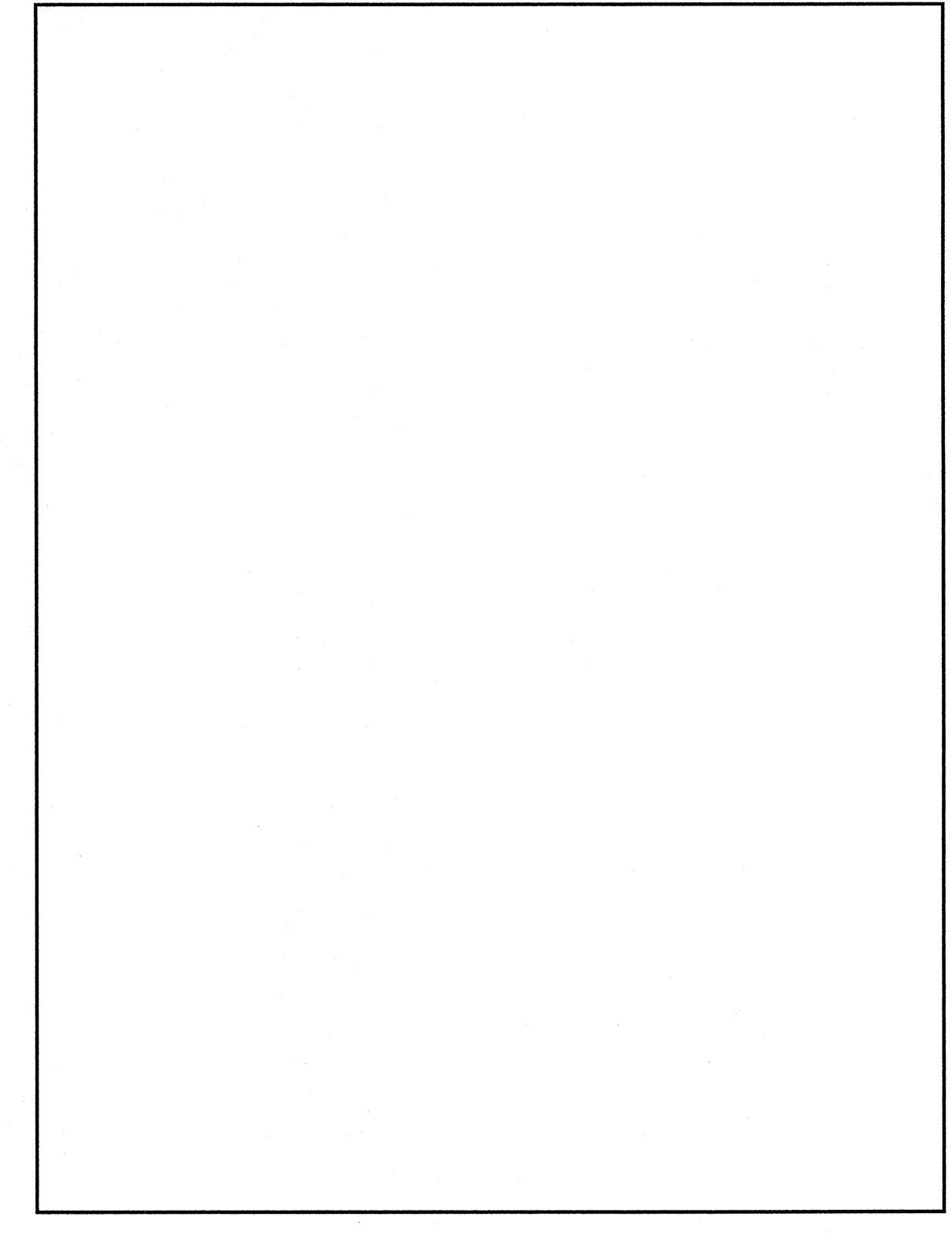
(J) RAISED CONCRETE ISLAND DETAIL
N.T.S.



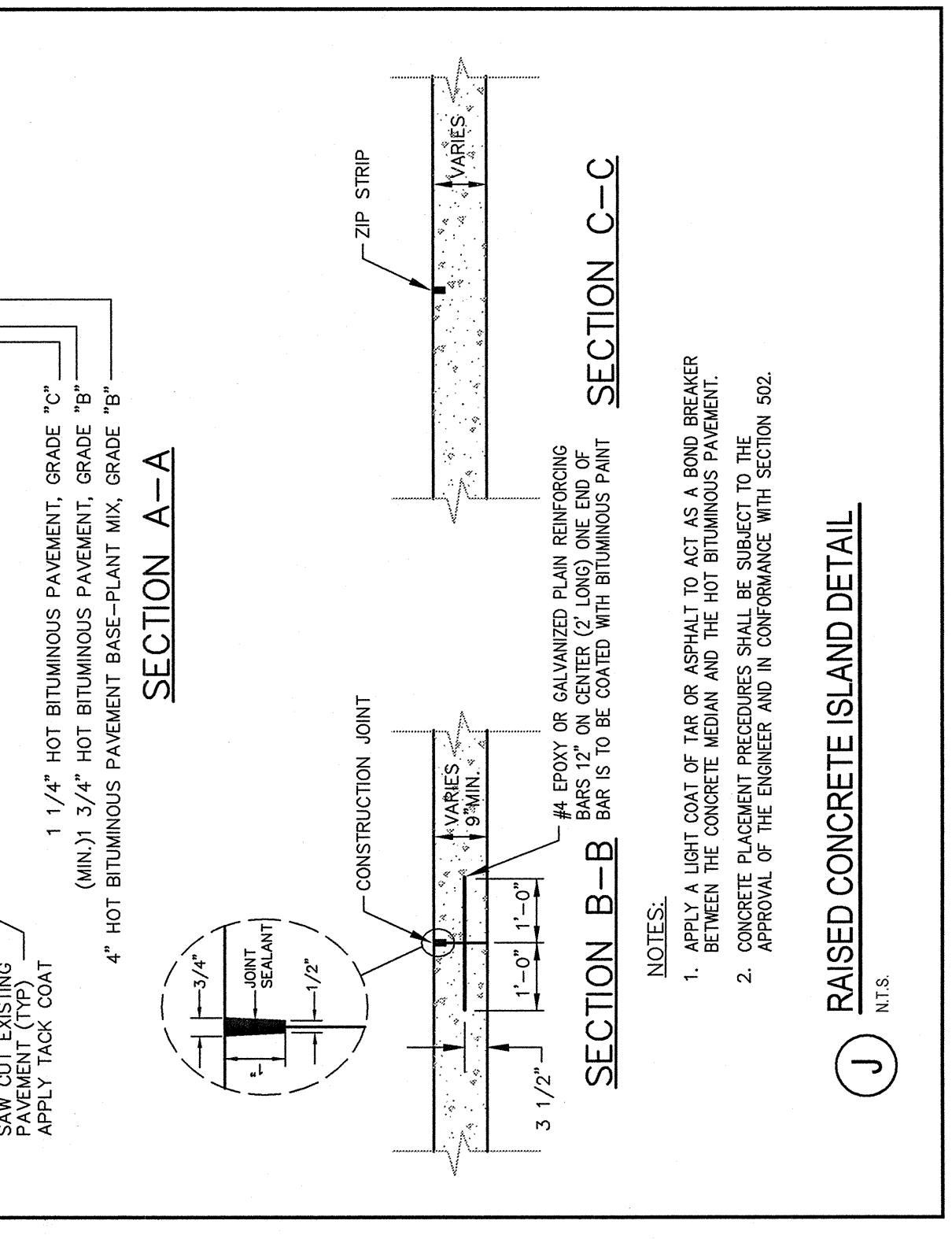
(L) TYPICAL ISLAND PLANTING BEDS WITH SIDEWALK
N.T.S.



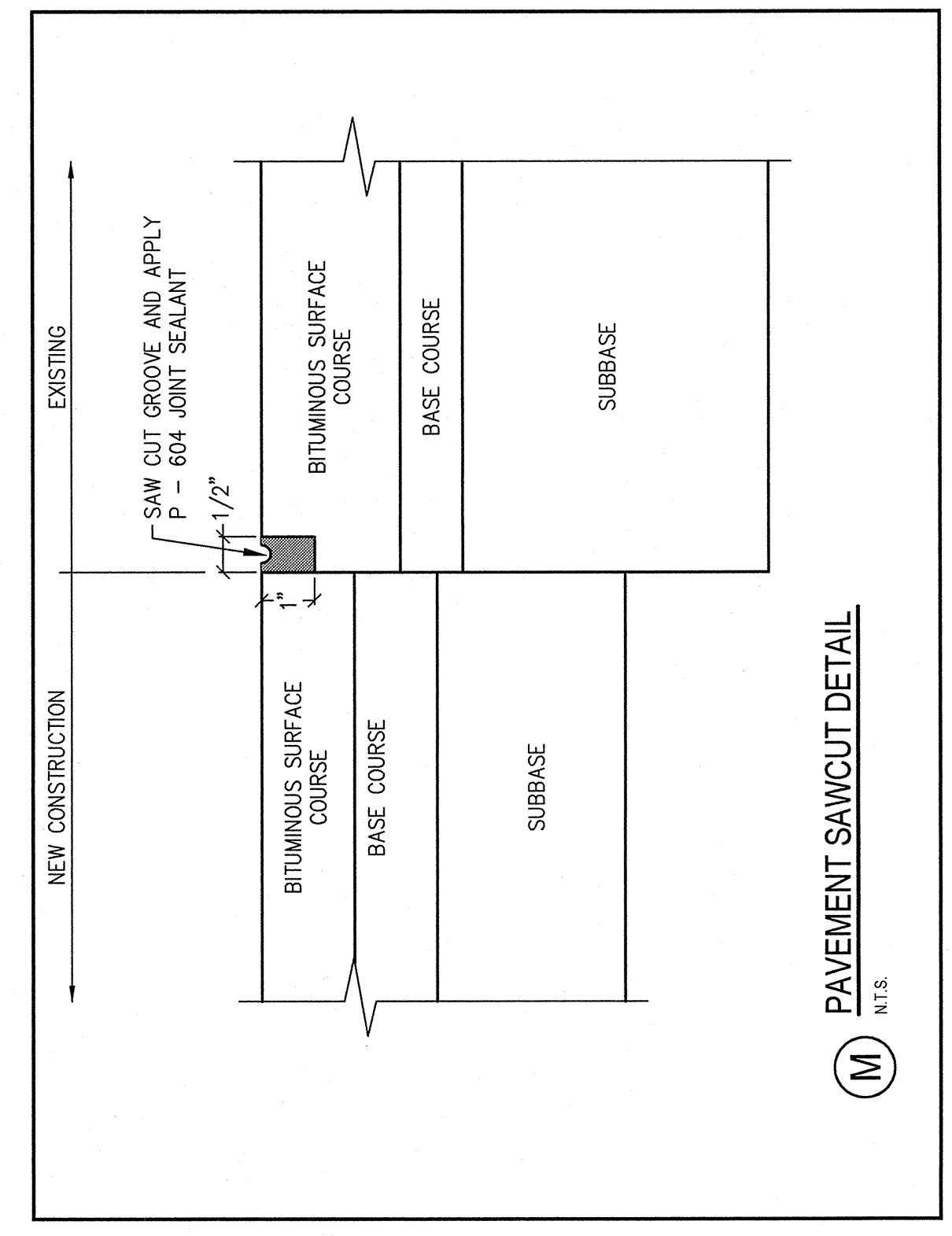
(M) PAVEMENT SAWCUT DETAIL
N.T.S.



(B) RAISED CROSSWALK DETAIL
N.T.S.



(I) TYPICAL ISLAND PLANTING BEDS WITHOUT SIDEWALK
N.T.S.



(N) PAVEMENT SAWCUT DETAIL
N.T.S.

CHAIN LINK FENCE INSTALLATION SCHEDULE			
FENCE HEIGHT (A)	TOP RAIL LINE POST CORNER & TERMINAL PIPE DIA. (B)	POST DIA. (C)	POST PIPE DIA. (D)
4'	1.66"	1.90"	2.375"
5' & 6'	1.66"	1.90"	2.375"
8'	1.66"	2.375"	2.875"

NOTE: ALL POSTS AND HARDWARE SHALL RECEIVE BLACK VINYL COATING.

DELUCA-HOFFMAN ASSOCIATES, INC.
778 MAIN STREET, SUITE B
207 WILSON AVENUE, 2ND FLOOR
WILMINGTON, DE 19801
WWW.DELUCAHOFFMAN.COM

PROJECT: MERCY AT THE FORE
SHEET TITLE: PAVEMENT AND SITE DETAILS
CLIENT: MERCY HOSPITAL

DESIGNED: SRB | **SCALE:** NONE
CHECKED: SRB | **JOB NO.:** 2149.01
FILE NAME: 2149.01-DE-1-SITE
SHEET: C-180

REV. DATE DESCRIPTION

5	7.28.06	RELEASED TO CONSTRUCTION MANAGER
4	7.25.06	RESUBMITTED TO CITY OF PORTLAND
3	6.13.06	REVISIONS FOR CITY OF PORTLAND
2	3.10.06	PRELIMINARY SITE PLAN APPLICATION TO CITY OF PORTLAND
1	1.11.02	SITE LOCATION OF DEVELOPMENT PERMIT SUBMISSION

REVISIONS
P.E. STEPHEN BUSHEY
LIC. # 7429