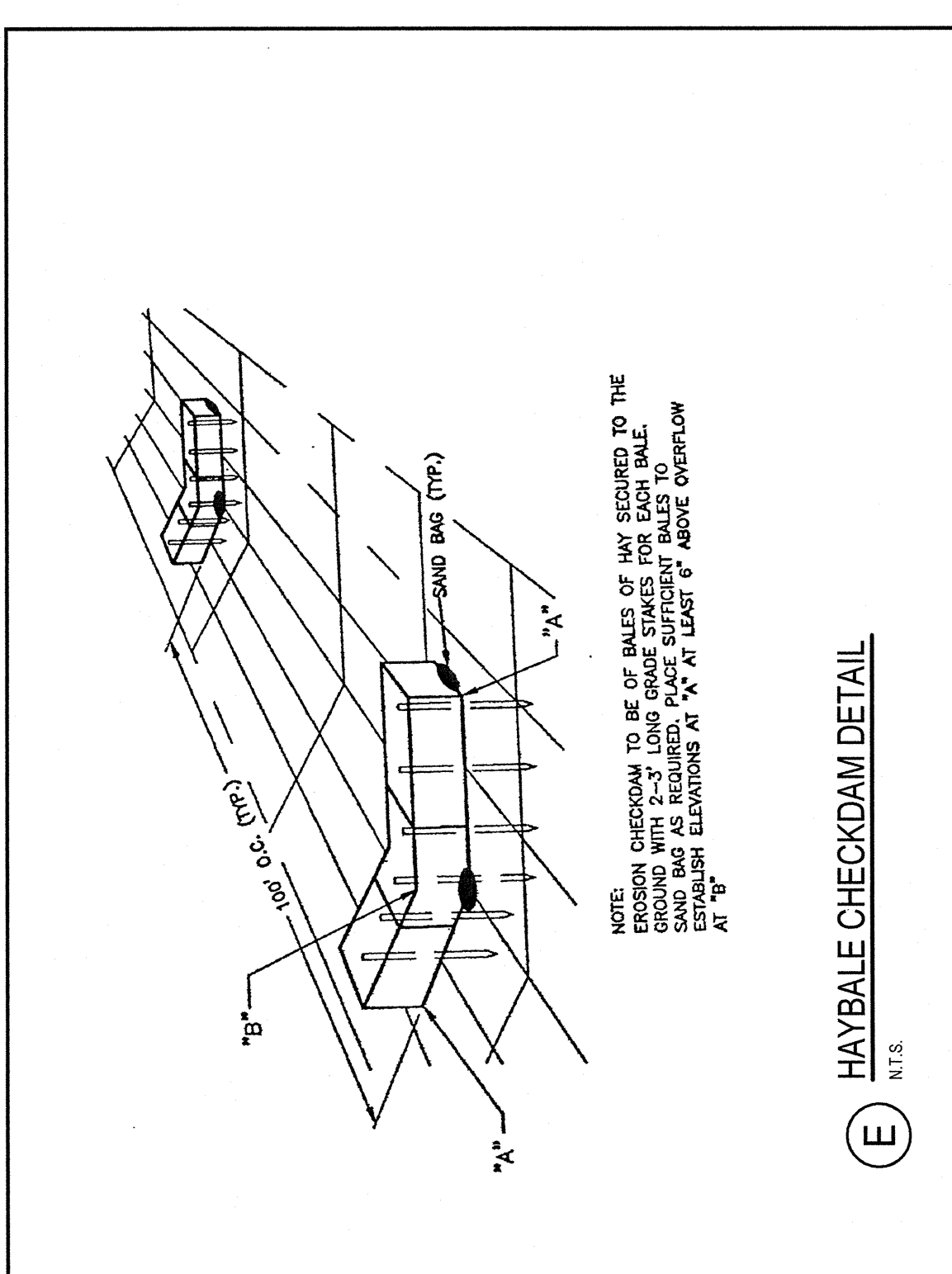
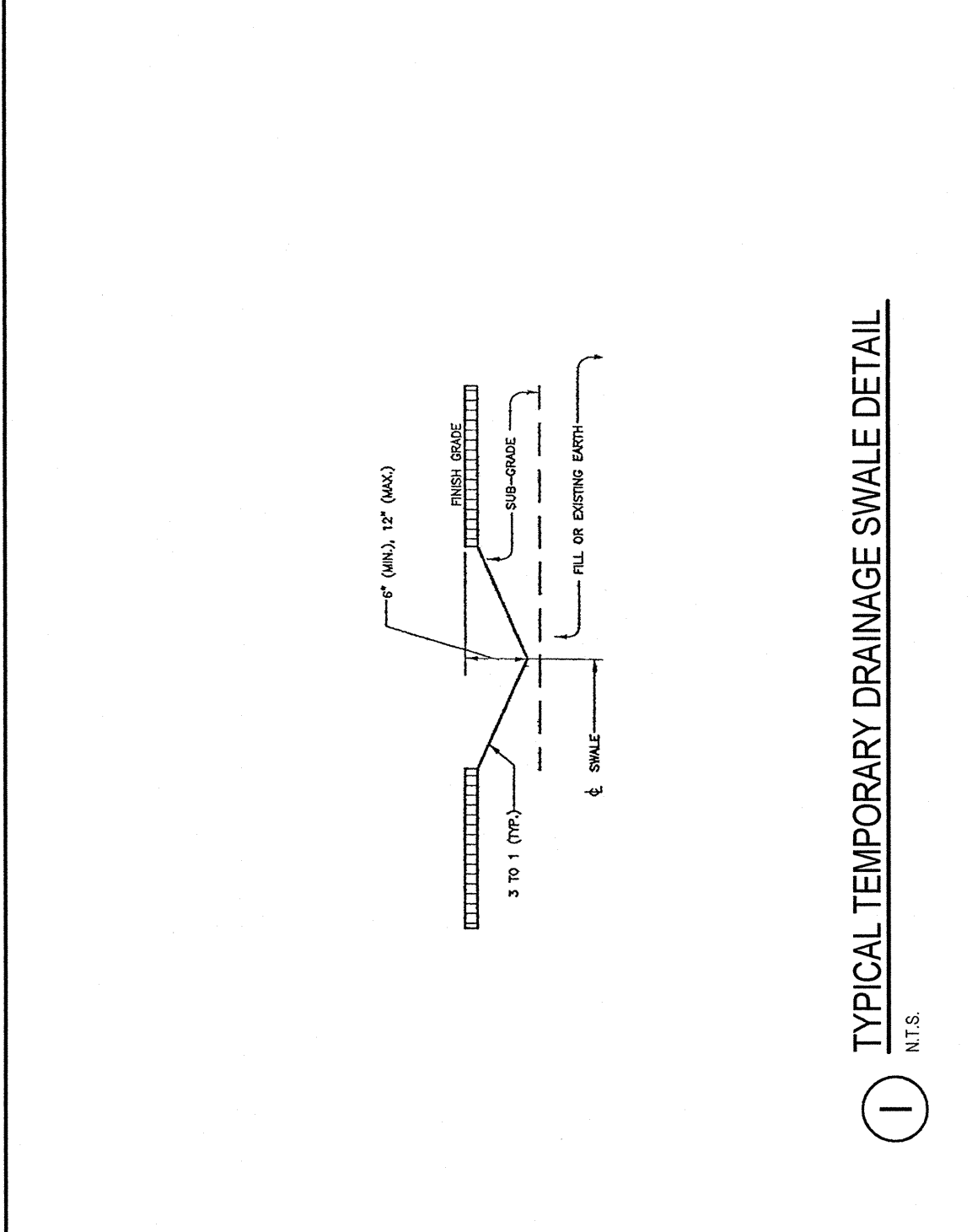


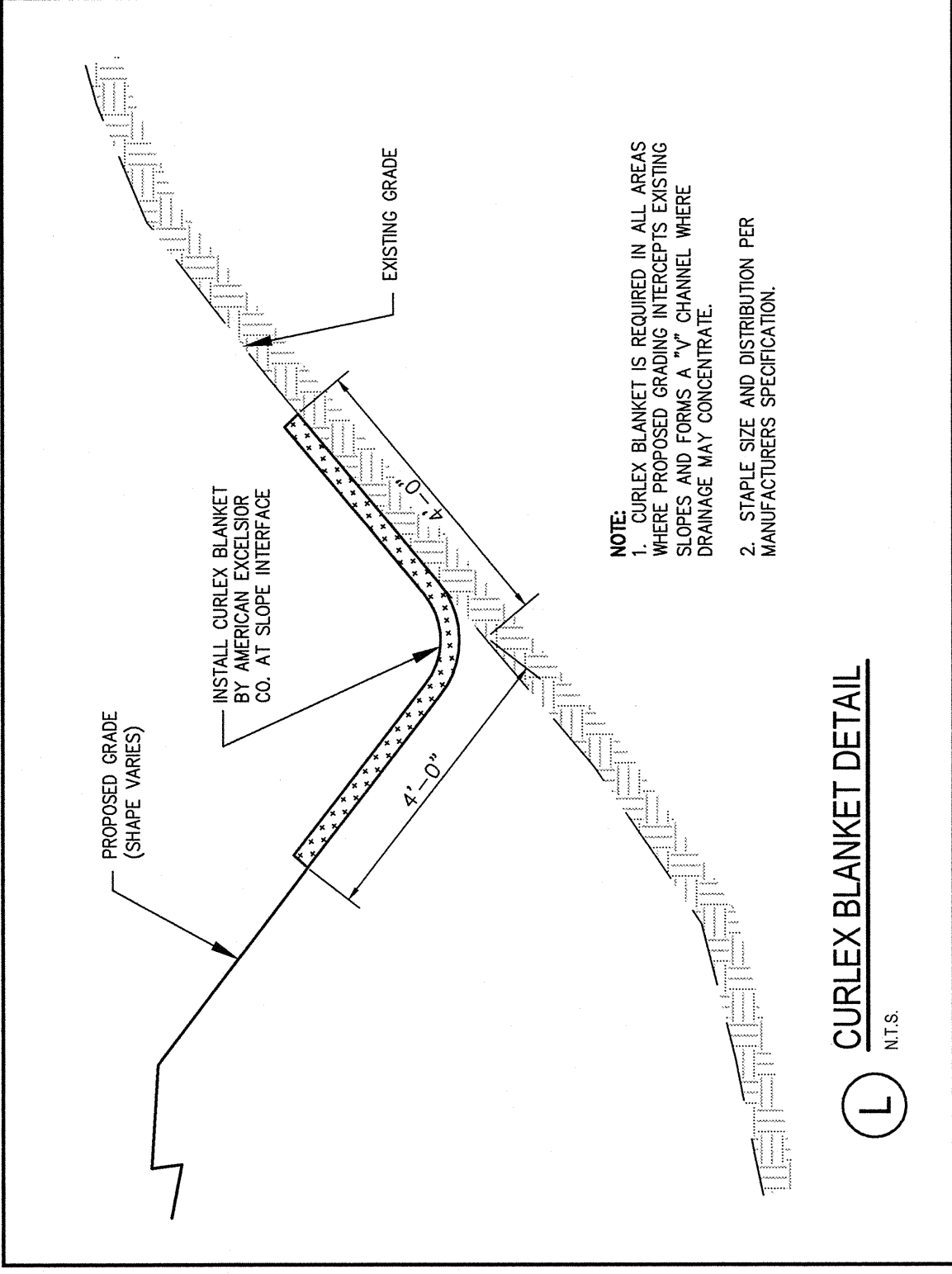
**A** TYPICAL FILTER BAG DETAIL  
N.T.S.



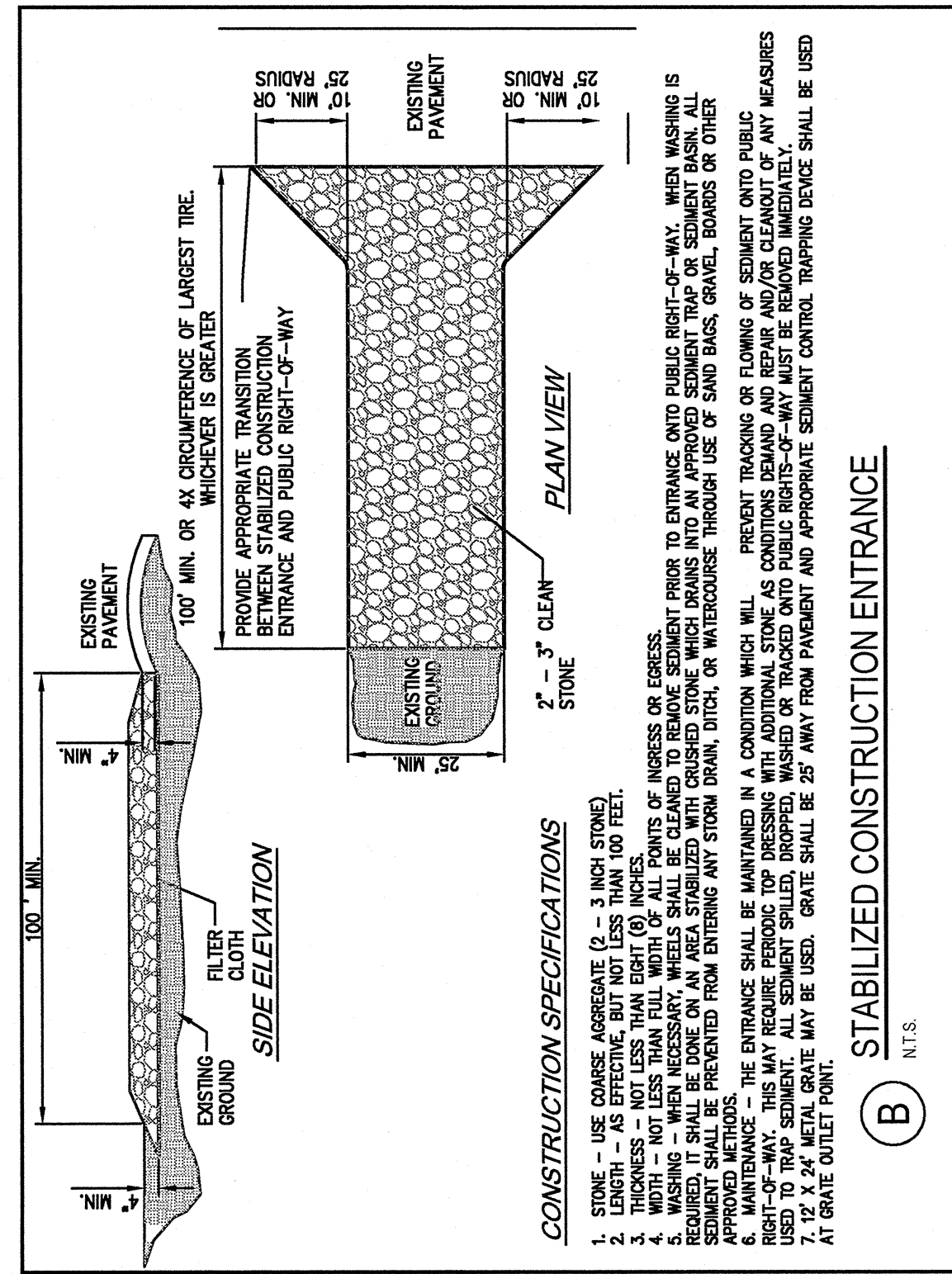
**E** HAYBALE CHECKDAM DETAIL  
N.T.S.



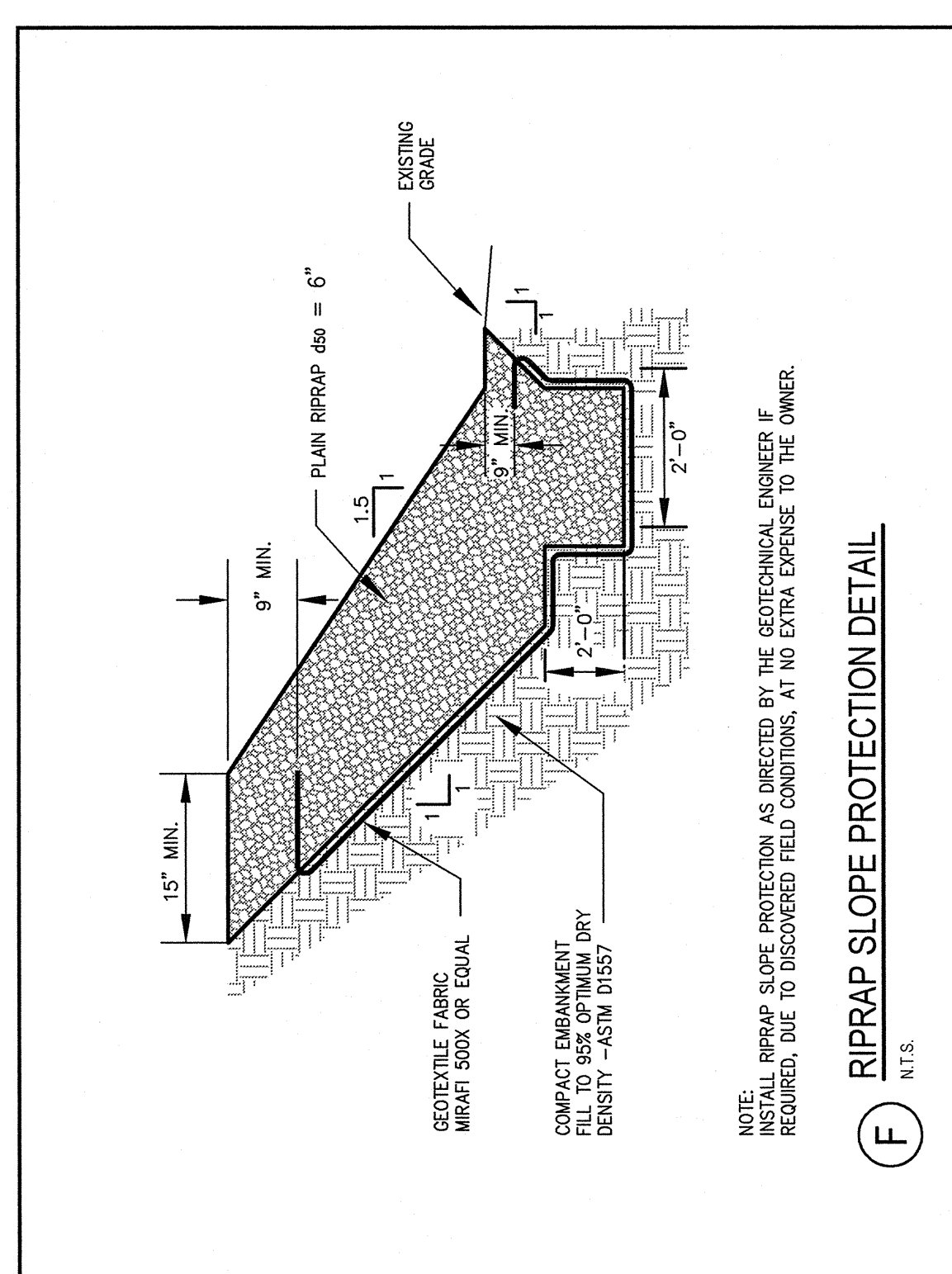
**I** TYPICAL TEMPORARY DRAINAGE SWALE DETAIL  
N.T.S.



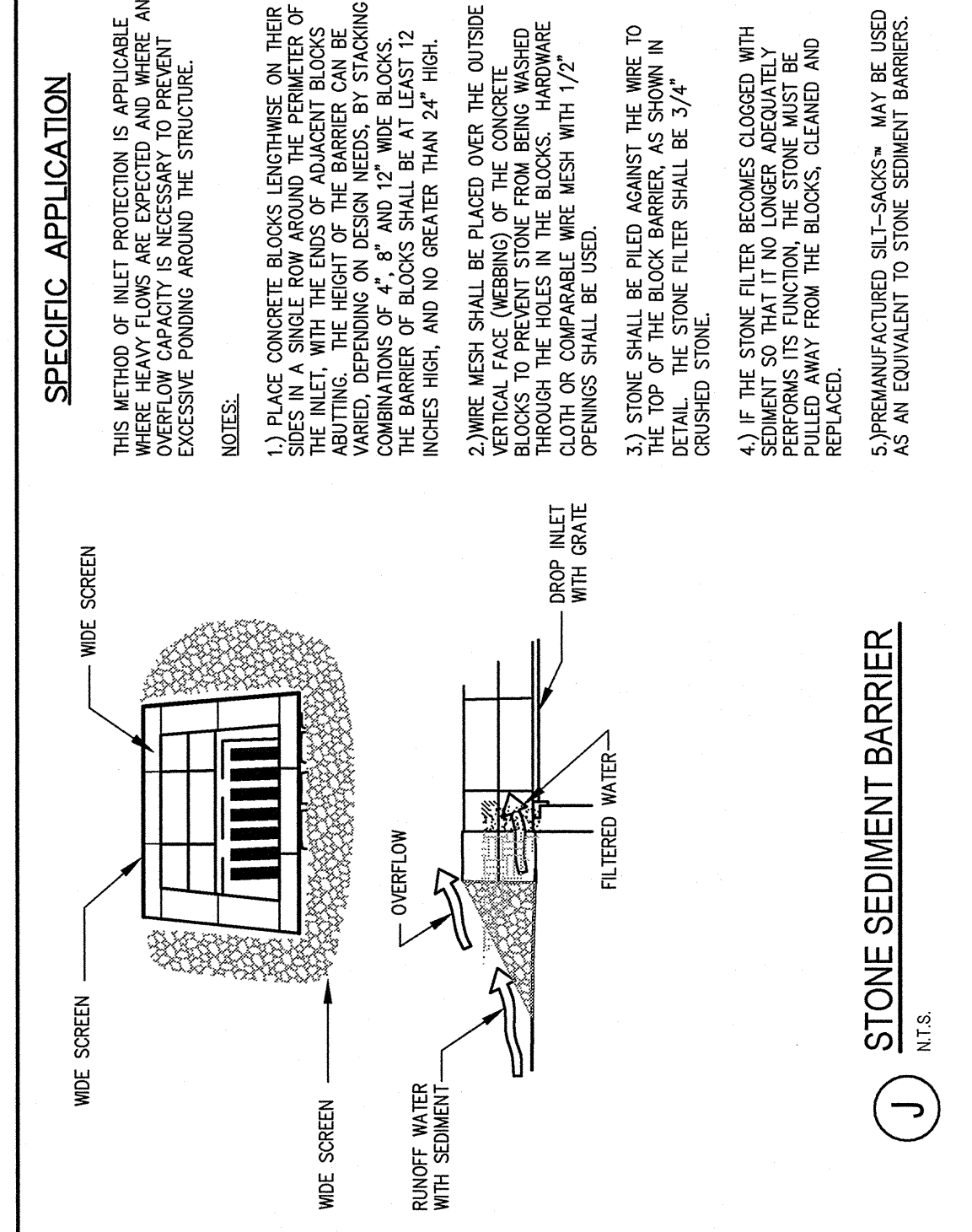
**L** CURLEX BLANKET DETAIL  
N.T.S.



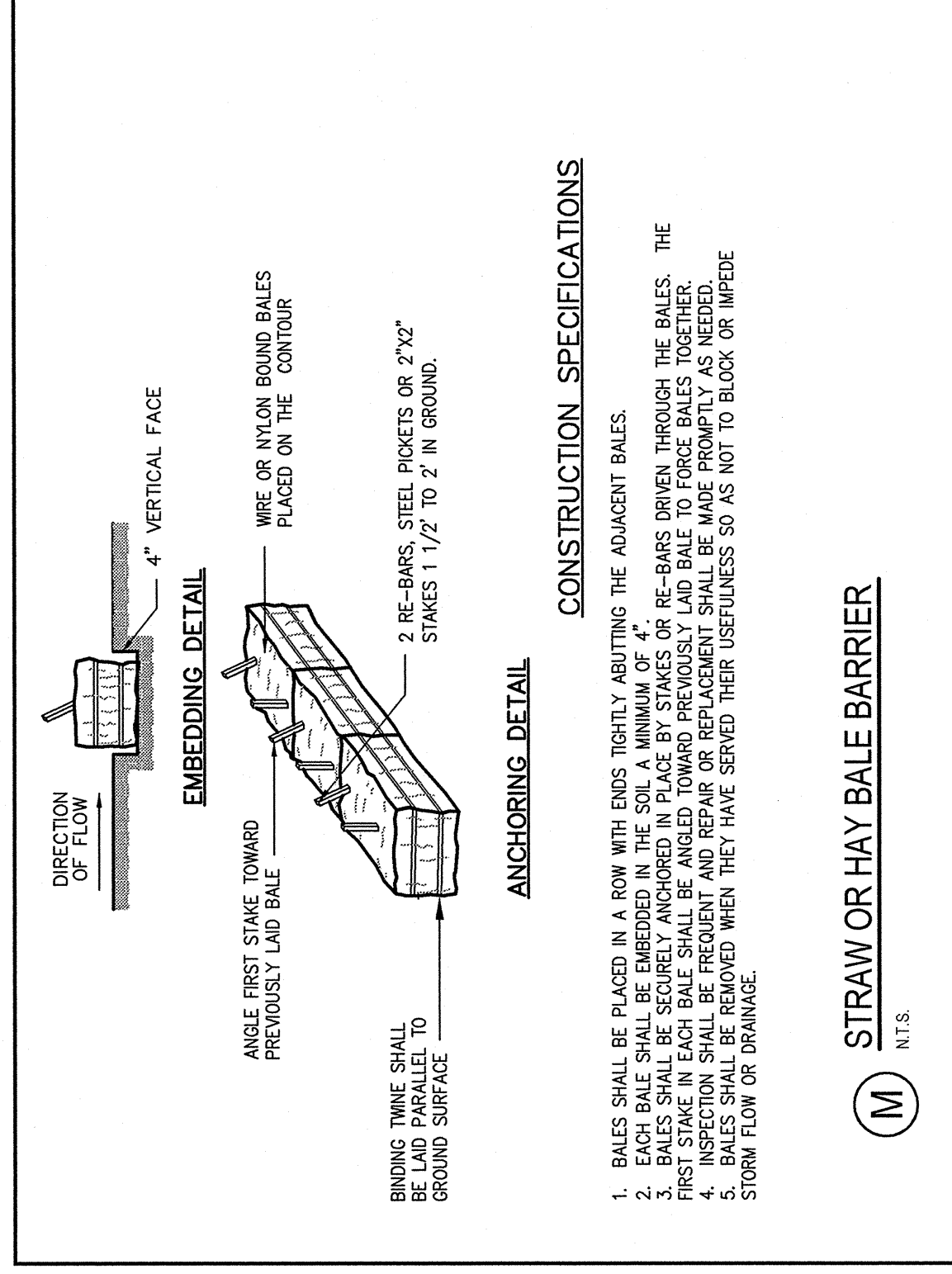
**B** STABILIZED CONSTRUCTION ENTRANCE  
N.T.S.



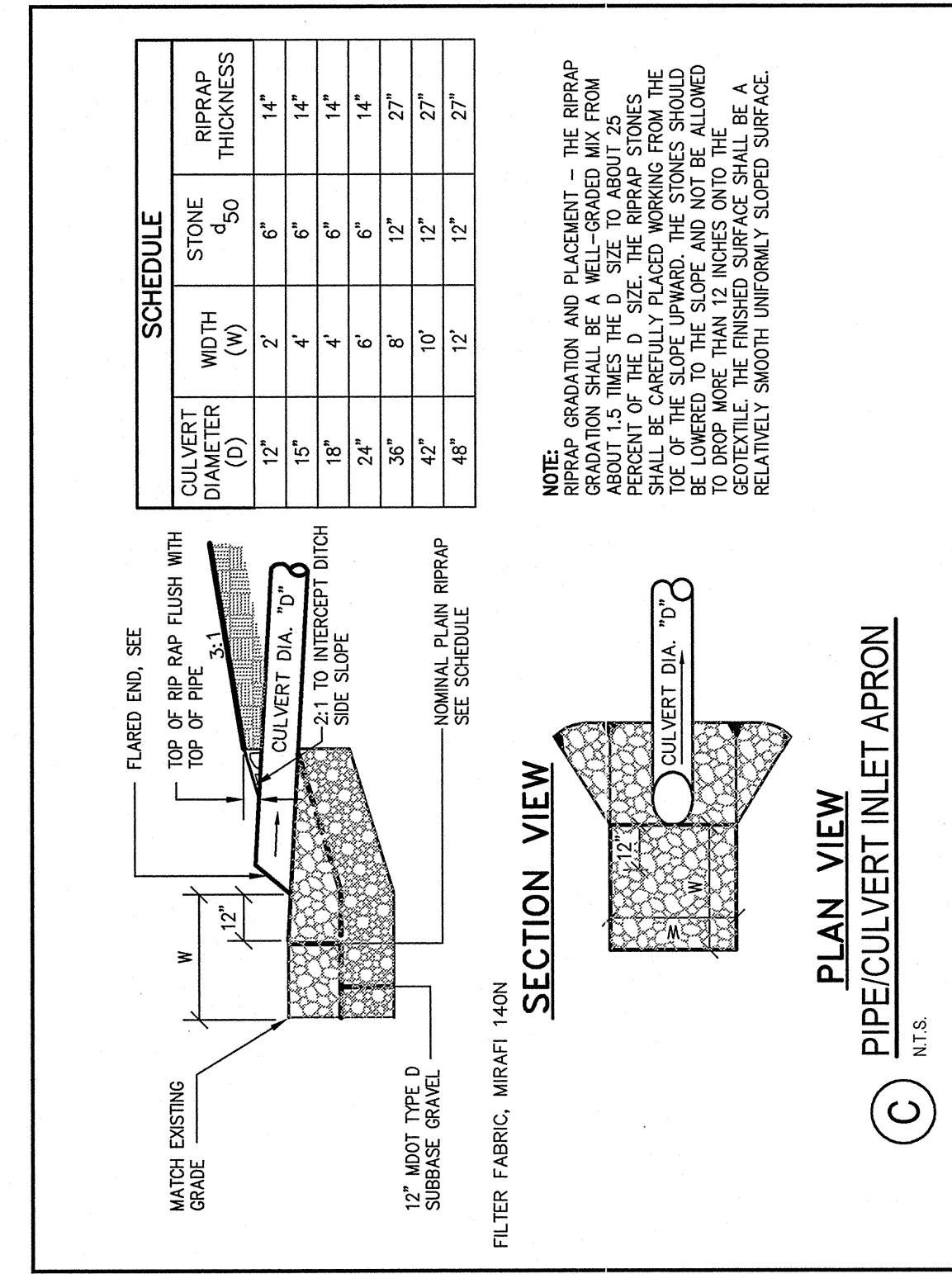
**F** RIPRAP SLOPE PROTECTION DETAIL  
N.T.S.



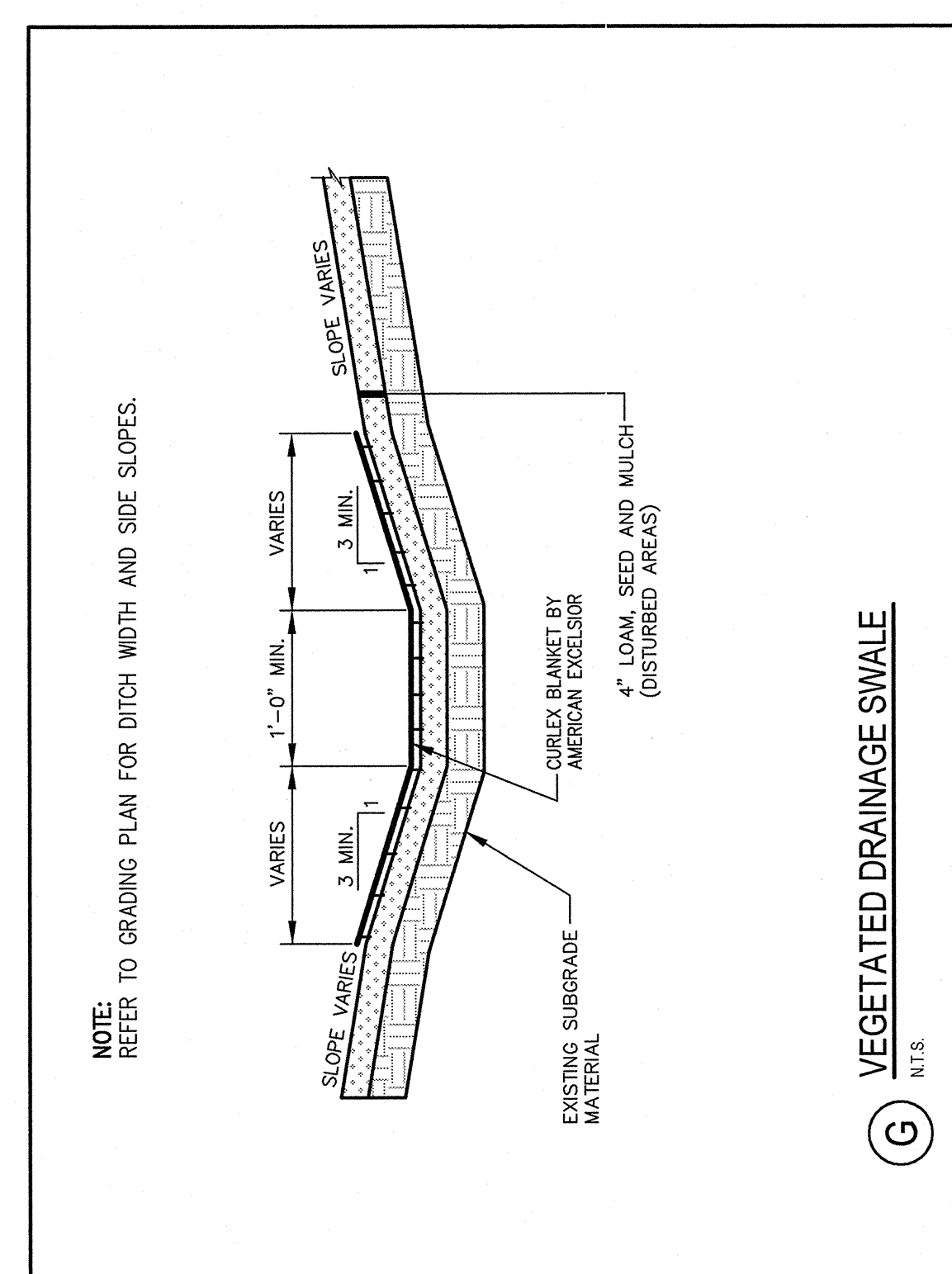
**J** STONE SEDIMENT BARRIER  
N.T.S.



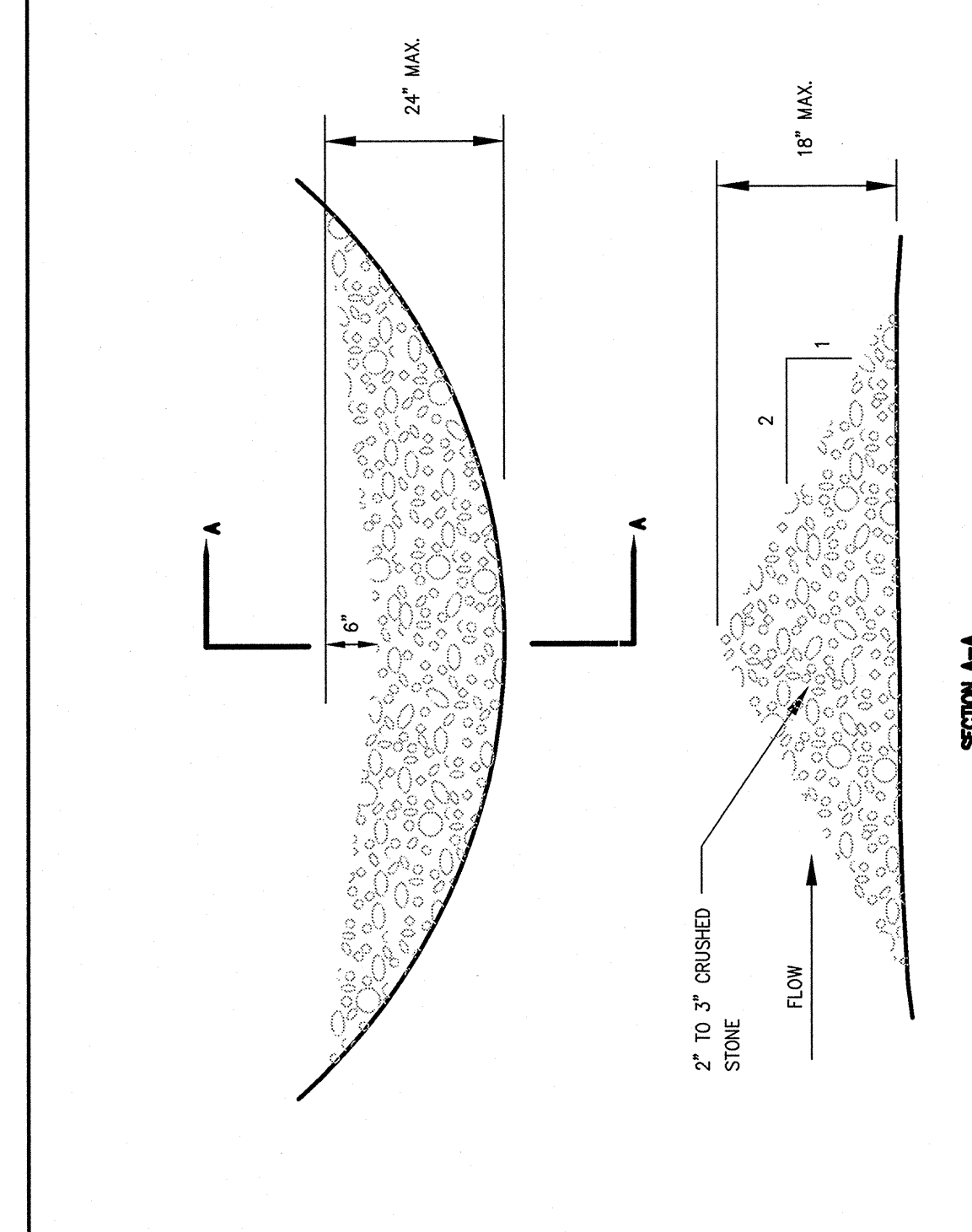
**M** STRAW OR HAY BALE BARRIER  
N.T.S.



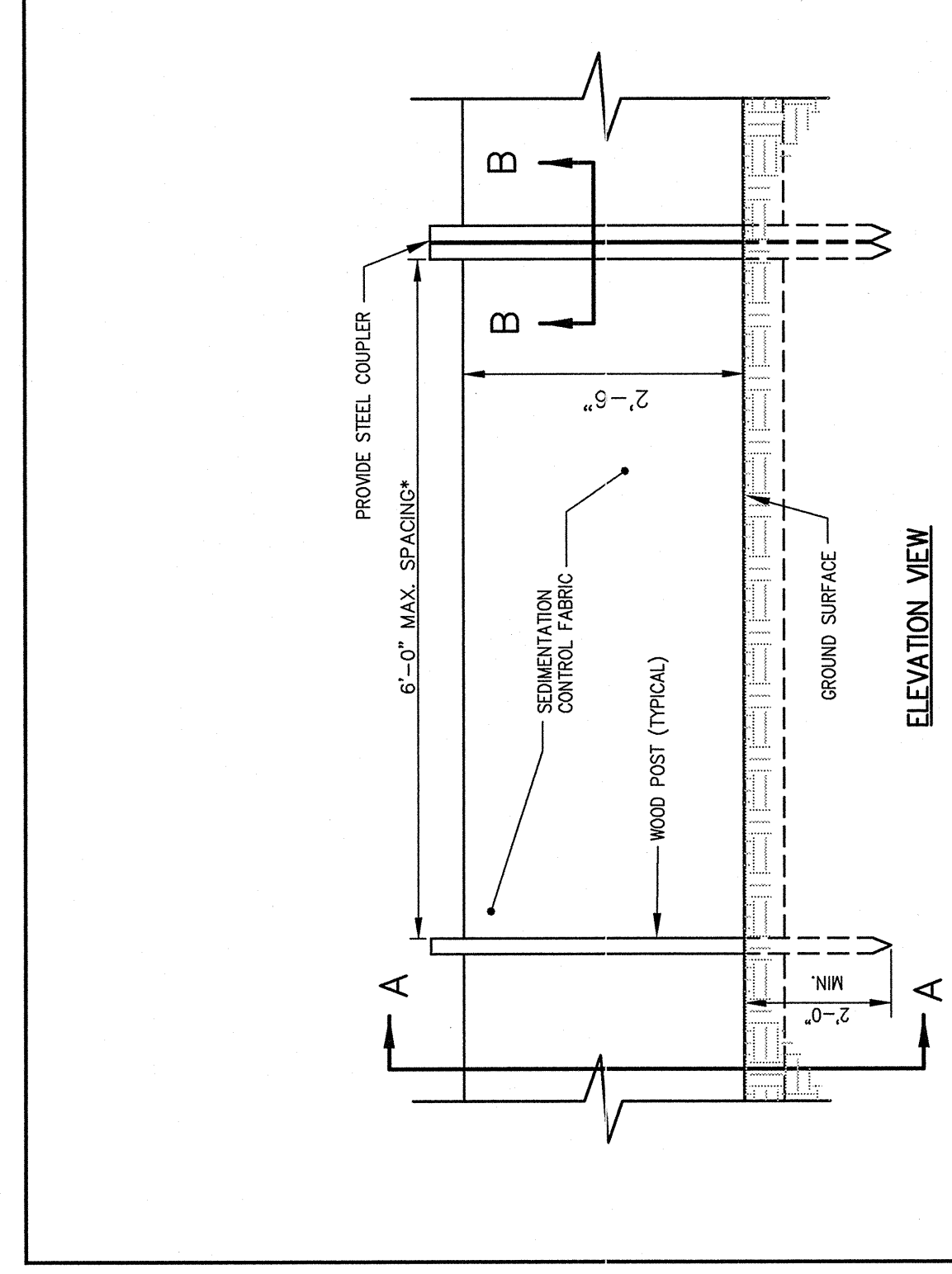
**C** PIPE/CULVERT INLET APRON  
N.T.S.



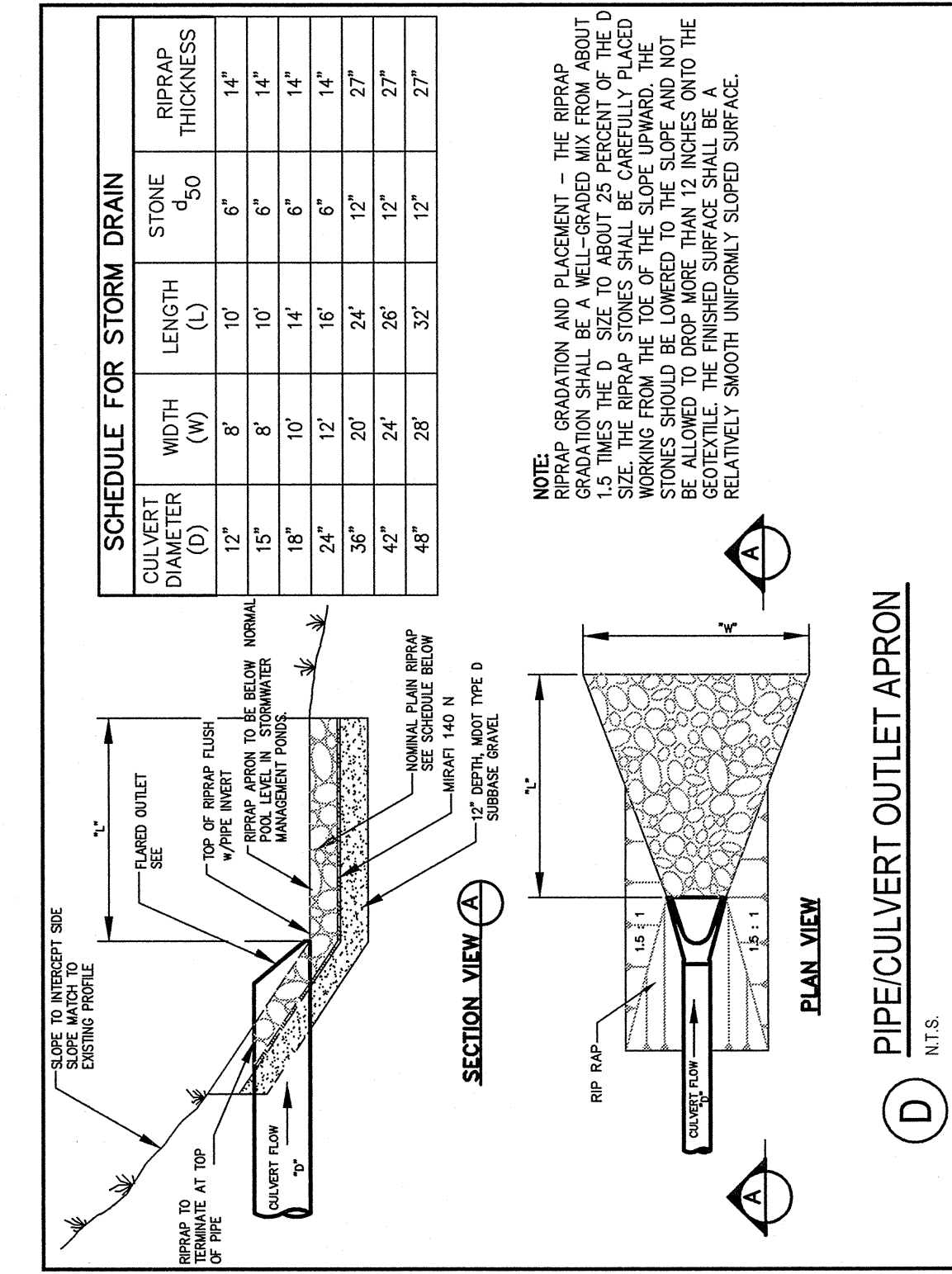
**G** VEGETATED DRAINAGE SWALE  
N.T.S.



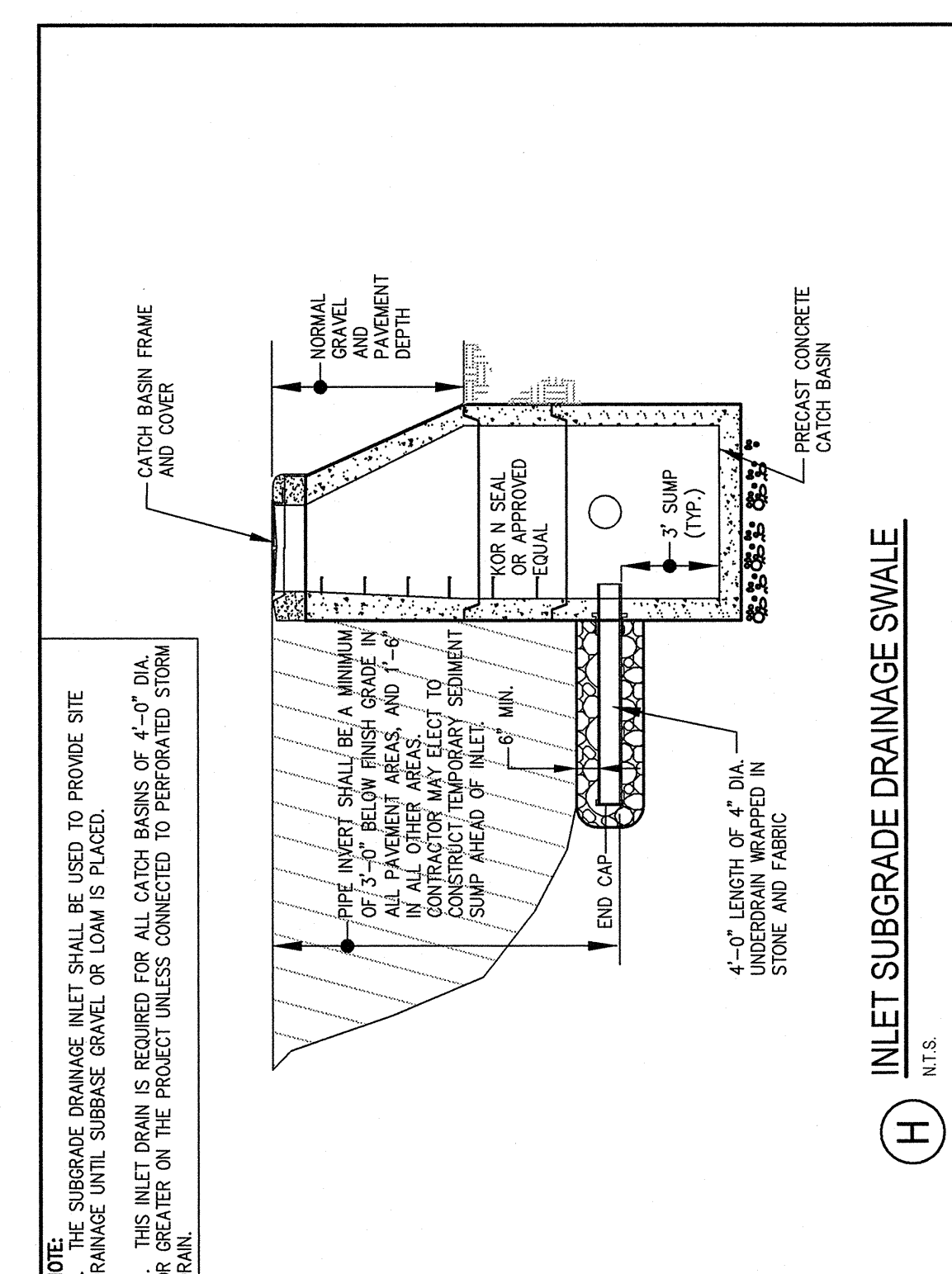
**K** STONE CHECK DAM  
N.T.S.



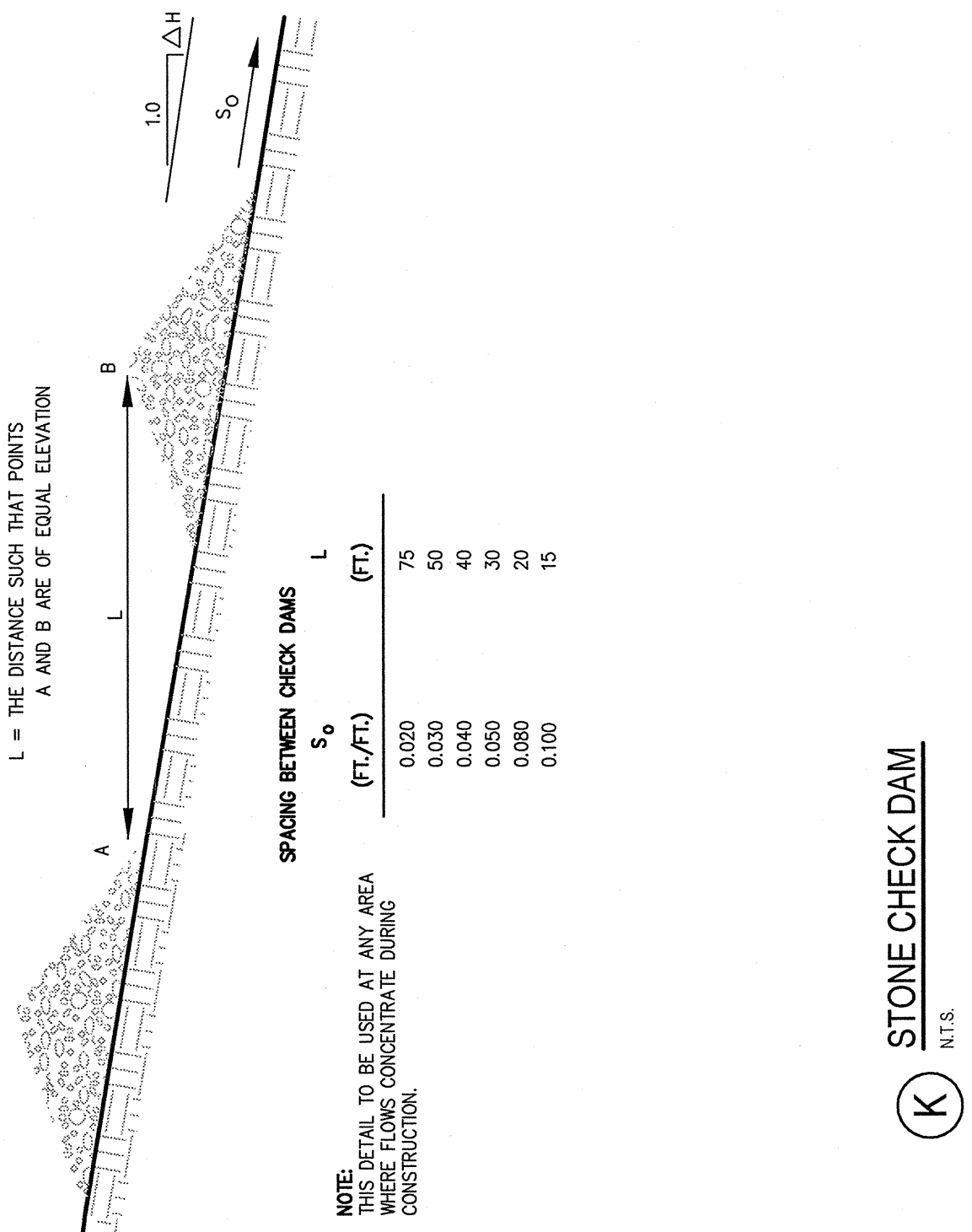
**N** SILTATION FENCE DETAIL  
N.T.S.



**D** PIPE/CULVERT OUTLET APRON  
N.T.S.



**H** INLET SUBGRADE DRAINAGE SWALE  
N.T.S.



**O** SILT SACK DETAIL AND SPECIFICATIONS  
N.T.S.

**SILT SACK®**  
SPECIFICATIONS

NOTE: THE SILT SACK® WILL BE MANUFACTURED FROM A WOVEN POLYPROPYLENE FABRIC THAT MEETS OR EXCEEDS THE FOLLOWING SPECIFICATIONS.

REGULAR FLOW SILT SACK® (FOR SLOPE SIDE (SD))  
FOR AREAS OF LOW TO MODERATE PRECIPITATION AND RUN-OFF

HEAVY FLOW SILT SACK® (FOR USE IN LOW FLOWS (SLD))  
FOR AREAS OF MODERATE TO HEAVY PRECIPITATION AND RUN-OFF

NOTE: REQUIRED FOR ALL INLETS  
N.T.S.

NOTE: THE SILT FENCE SHOULD HAVE A MAXIMUM STAKING DISTANCE OF 100 FEET. THE STAKES SHOULD BE PLACED AT A MINIMUM OF 10 FEET AND WITH A MINIMUM MESH SPACING OF 6\"/>

REV	DATE	DESCRIPTION
5	7.28.08	RELEASED TO CONSTRUCTION MANAGER
4	7.25.08	RESUBMITTED TO CITY OF PORTLAND
3	7.23.08	REVISIONS TO PERMITS
2	5.10.08	PRELIMINARY SUBMITTAL APPLICATION TO CITY OF PORTLAND
1	1.11.08	SITE LOCATION OF DEVELOPMENT PERMIT SUBMISSION

PROJECT	MERCY AT THE FORE
SHEET TITLE	EROSION / SEDIMENT CONTROL DETAILS
CLIENT	MERCY HOSPITAL

DESIGNED BY	SCALE	N.T.S.
CHECKED BY	DATE	JAN. 2002
DATE	FILE NAME	2:149.01-DET-EROS
DATE	REVISIONS	C-14A

PROJECT	MERCY AT THE FORE
SHEET TITLE	EROSION / SEDIMENT CONTROL DETAILS
CLIENT	MERCY HOSPITAL

DESIGNED BY	SCALE	N.T.S.
CHECKED BY	DATE	JAN. 2002
DATE	FILE NAME	2:149.01-DET-EROS
DATE	REVISIONS	C-14A