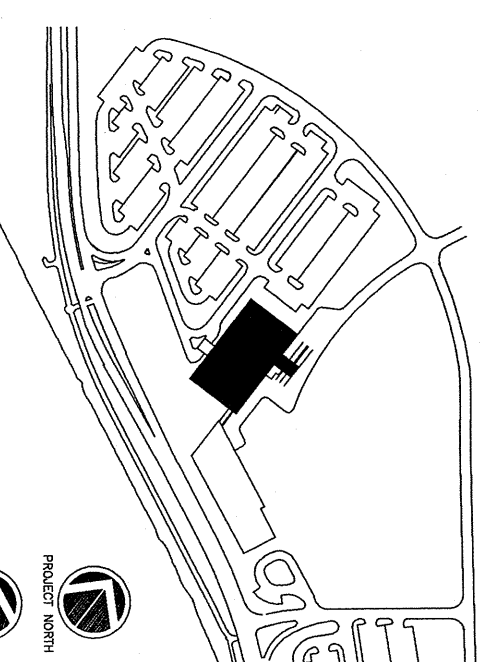


- GENERAL NOTES:
1. SEE INTERIOR DETAILS A1.26 FOR BUMPER, WALL PROTECTION & HAND RAILS
  2. SEE FINISH PLANS FOR LOCATION, TYPE & EXTENTS OF FINISH MATERIAL
  3. SEE A6.07/A6.08 FOR DESIGNOR, LEGEND & DETAILS
  4. SEE A6.08 FOR ACCESSORY MOUNTING HEIGHTS



Consultant:  
 D&B  
 278 Main Street, Suite 8106  
 Providence, Rhode Island 02903  
 Phone: (401) 775-1121  
 Fax: (401) 879-0898

Consultant:  
 ASSOCIATE ARCHITECT/STRUCTURAL ENGINEER  
 444 Fore Street, Box 618  
 Providence, Rhode Island 02903  
 Phone: (401) 772-3846  
 Fax: (401) 772-1070

Consultant:  
 MECHANICAL/ELECTRICAL ENGINEER  
 Boyd, Ross + Atkins Consulting Engineers, LLC  
 317 Asenisi Street  
 Worcester, MA 02178-5989  
 Phone: (508) 853-4000  
 Fax: 617-824-3339

Consultant:  
 EQUIPMENT PLANNING  
 1665 Gordon & George Patton Drive  
 Franklin, Tennessee 37067  
 Phone: (615) 378-3114  
 Fax: (615) 378-3114

Consultant:  
 CONSTRUCTION MANAGER  
 7 Jackson Way  
 Providence, Rhode Island 02903  
 Phone: (401) 456-5516  
 Fax: (401) 456-5516

Consultant:  
 FOOD SERVICE  
 1888 West End Ave. Suite 1400  
 Providence, Rhode Island 02903  
 Phone: (615) 321-5691  
 Fax: (615) 321-5689

Manager/General Contractor and all trades and subcontractors shall accept conditions of prior work by retained trades before proceeding with any work.

Date: 11/10/06  
 Drawn By: ART/KD  
 Scale: AS NOTED

Francis

Cauffman

Foley

Hoffmann

Project Title  
 Project Number  
 Project Name

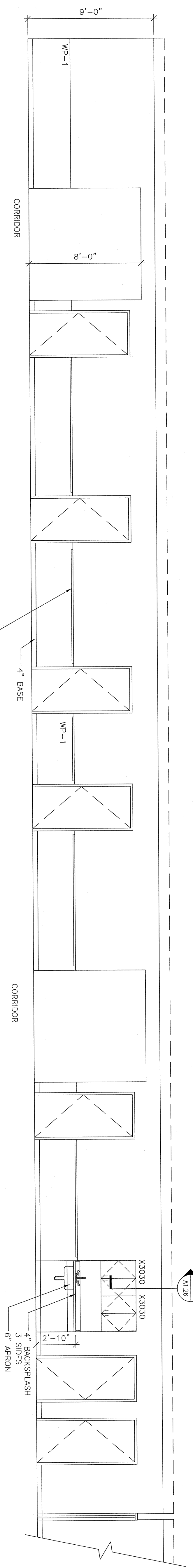
Mercy Health Core  
 System of Maine  
 FORE RIVER SHORT  
 STAY HOSPITAL



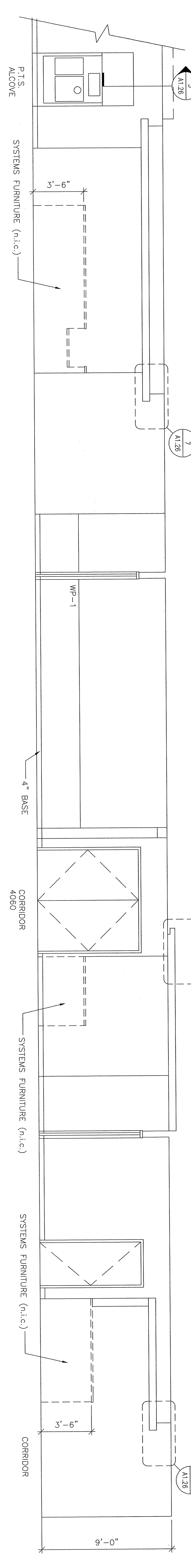
Project Number: F05-4389

Drawing Title and Number: 4th Floor Interior Elevations  
 Project Name: XAV/06

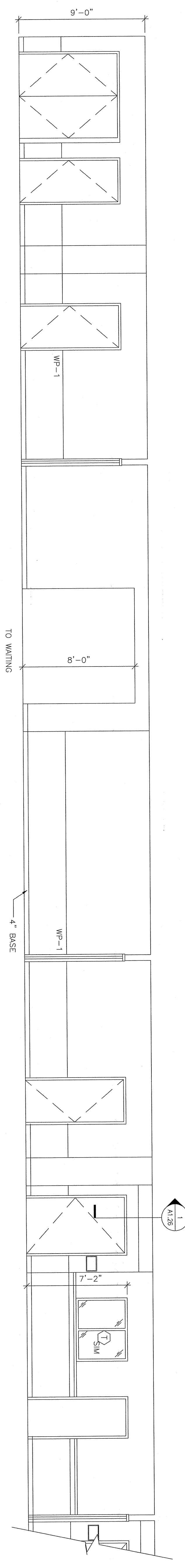
A8.43



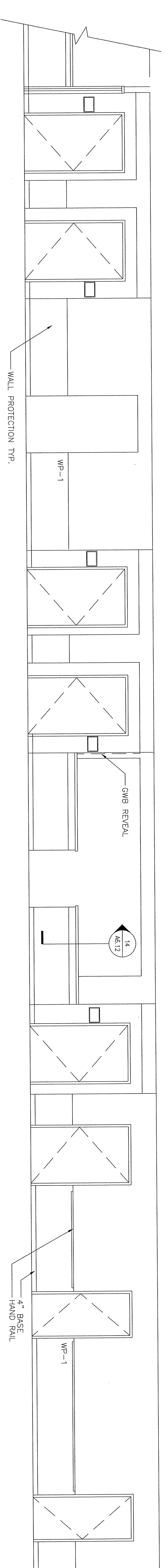
1 CORRIDOR-S4X080  
 1/4"=1'-0"



2 CORRIDOR-S4X030  
 1/4"=1'-0"



3 CORRIDOR-S4X030  
 1/4"=1'-0"



4 CORRIDOR-S4X080  
 1/4"=1'-0"

