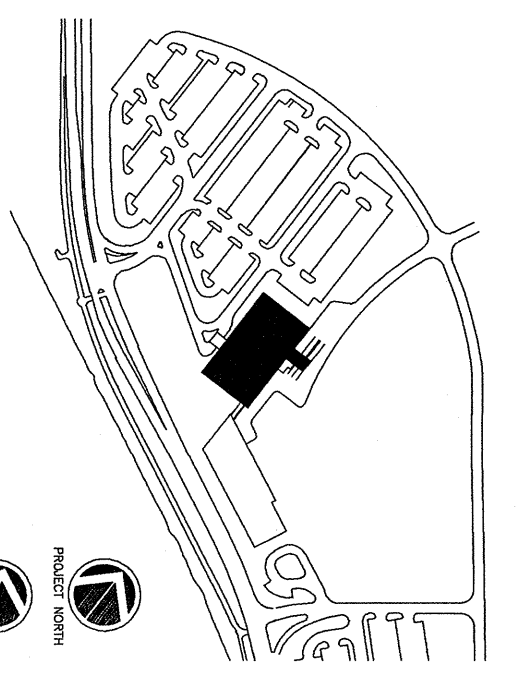


- GENERAL NOTES:
1. SEE INTERIOR DETAILS A26 FOR BLINDS, WALL PROTECTION & HAND RAILS
 2. SEE FINISH PLANS FOR EXTENSIVE FINISH MATERIAL
 3. SEE A6.07/A6.08 FOR CASEWORK LEGEND & DETAILS
 4. SEE A6.06 FOR ACCESSORY MOUNTING HEIGHTS



Consultant
 CIVIL ENGINEER Associates, Inc.
 778 Main Street, Suite 8
 South Portland, ME 04106
 Phone: (207) 771-1121
 Fax: (207) 879-0896

Consultant
 ASSOCIATE ARCHITECT/STRUCTURAL ENGINEER
 144 Fore Street P.O. Box 618
 Portland, ME 04101
 Phone: (207) 772-3346
 Fax: (207) 772-1070

Consultant
 ELECTRICAL ENGINEER
 Bird, Bow & Atkins Consulting Engineers, LLC
 The Arsenal on the Clarks
 Waterford, MA 02472-5789
 Phone: (413) 542-1111
 Fax: (413) 542-3339

Consultant
 EQUIPMENT PLANNING
 Gene Burton & Associates
 1000 North Main Street, Suite 200
 Franklin, Tennessee 37007
 Phone: (615) 376-3100
 Fax: (615) 376-3114

Consultant
 CONSTRUCTION MANAGER
 Global Building Company
 Providence, Rhode Island 02903
 Phone: (401) 465-5985
 Fax: (401) 465-5118

Consultant
 FOOD SERVICE
 The Food Service Group, LLC
 1808 West End Ave, Suite 1400
 Nashville, TN 37203
 Phone: (615) 272-5591
 Fax: (615) 271-5589

It is the responsibility of the Construction Sub-Contractors to verify all dimensions and notes before proceeding with any work.

Date: 11/10/06
 Drawn By: Final-Brand For Construction
 ART/KD
 Scale: AS NOTED

Francis

Cauffman

Foley

Hoffmann

Project Title
 Francis Cauffman
 2120 Main Street
 Portland, ME 04103
 Architects: 215-569-6250

Mercy Health Care
 System of Maine
 FORE RIVER SHORT
 STAY HOSPITAL



Project Number: F03-4889
 Drawing Title and Number: Fourth Floor Interior Elevations
 Date: 8/10/06

