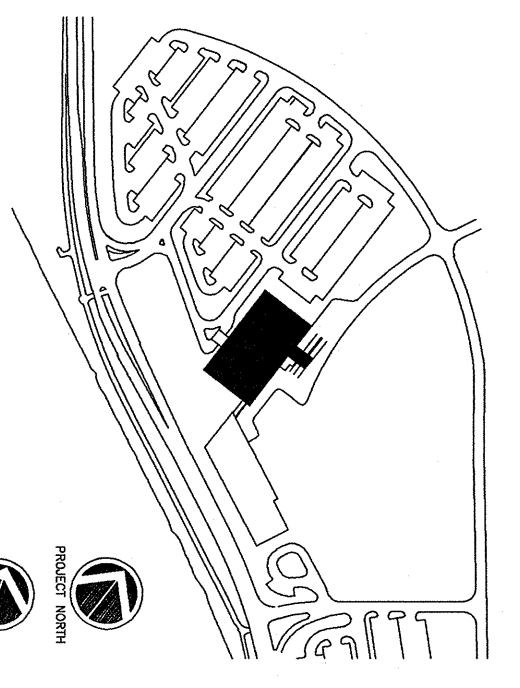


1. SEE INTERIOR DETAILS A126 FOR BUFFER WALL PROTECTION & HAND RAILS
2. SEE FINISH PLANS FOR EXTENSIVE FINISH MATERIAL
3. SEE A6.07/A6.08 FOR CASEWORK LEGEND & DETAILS
4. SEE A6.06 FOR ACCESSORY MOUNTING HEIGHTS



Consultant
 CIVIL ENGINEER
 778 Main Street, Suite 8
 South Portland, ME 04106
 Fax: (207) 879-1121
 Fax: (207) 879-0898

Consultant
 ASSOCIATE ARCHITECT/STRUCTURAL ENGINEER
 144 Fore Street P.O. Box 618
 Portland, ME 04101
 Phone: (207) 772-3846
 Fax: (207) 772-1070

Consultant
 ARCHITECT/STRUCTURAL ENGINEER
 Bird, Ross + Atkins Consulting Engineers, LLC
 The Arsenal on the Corners
 Waterville, ME 02272-5789
 Phone: (207) 872-4116
 Fax: (207) 872-4339

Consultant
 EQUIPMENT PLANNING
 Gene Burton & Associates
 144 Fore Street, Suite 618
 Portland, Tennessee 37027
 Phone: (615) 376-3100
 Fax: (615) 376-3114

Consultant
 CONSTRUCTION MANAGER
 Greene Building Company
 Providence, Rhode Island 02903
 Phone: (401) 456-5105
 Fax: (401) 456-5116

Consultant
 FOOD SERVICE
 FORD SERVICE
 1808 West End Ave. Suite 1400
 Nashville, TN 37203
 Phone: (615) 272-5591
 Fax: (615) 272-5589

It is the responsibility of the construction subcontractors to verify all dimensions and notes before proceeding with any work.

Date 11/10/06 Final-Issued For Construction
 Drawn By ART/KD
 Scale AS NOTED

Francis

Coffman

Foley

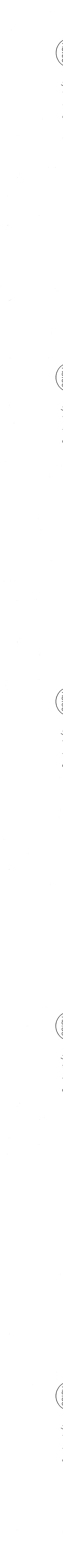
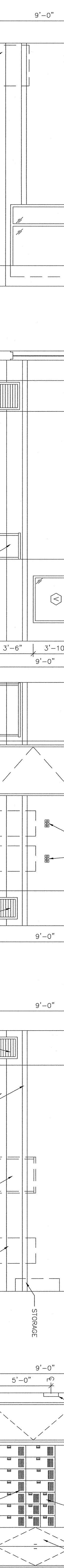
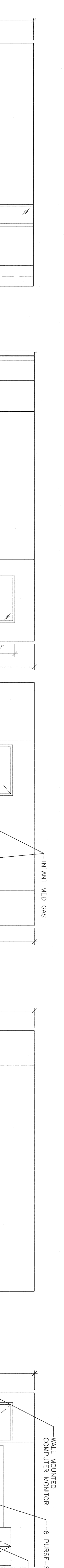
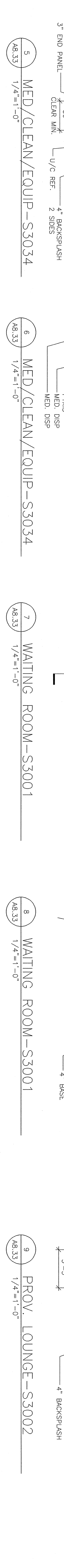
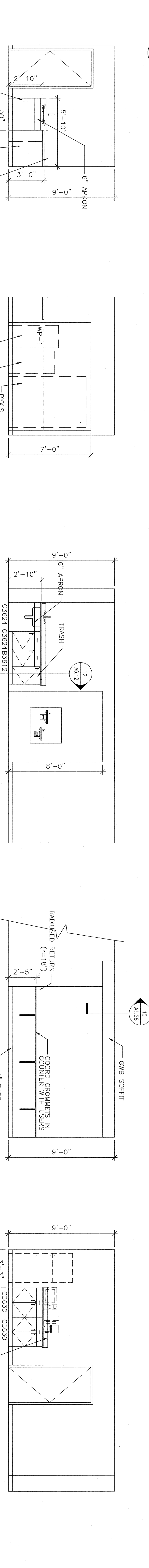
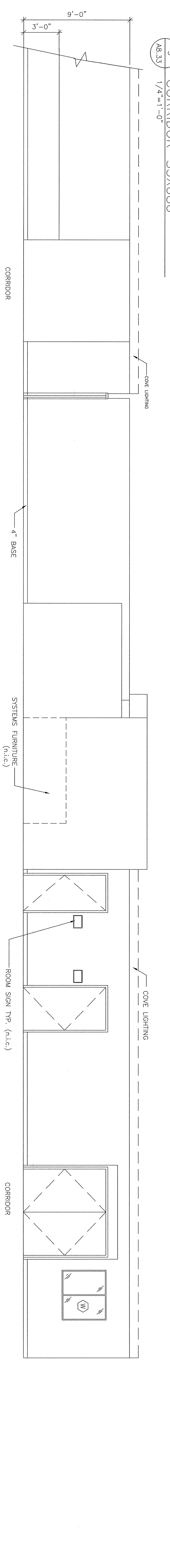
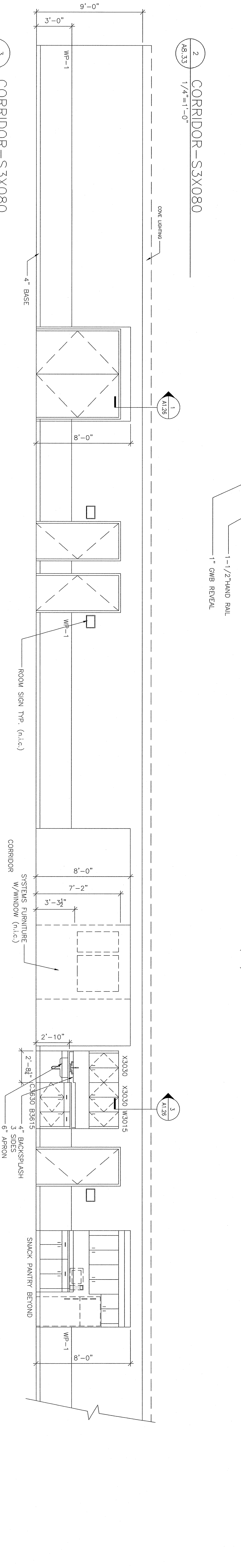
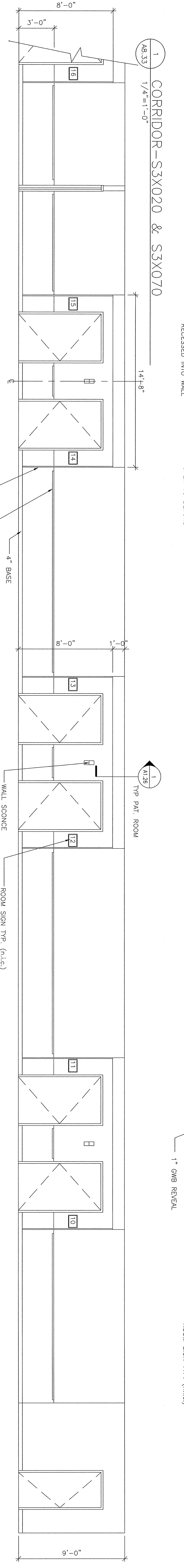
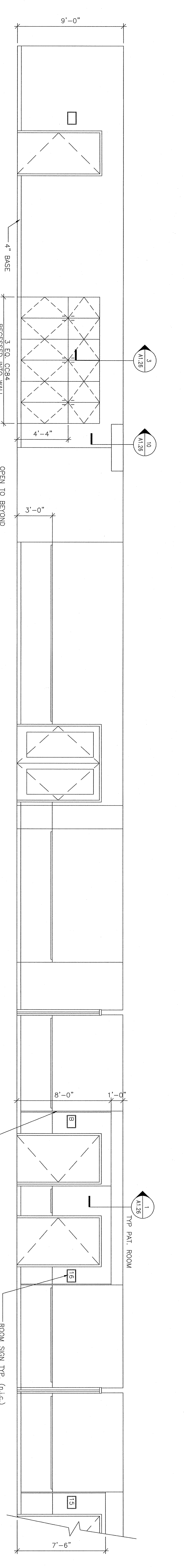
Hoffmann
 Francis Coffman
 2120 Main Street
 Portland, ME 04103
 Architects Inc.
 219-584-8250

Project Title
 Mercy Health Care
 System of Maine
 FORE RIVER SHORT
 STAY HOSPITAL



Project Number
 FJ3-4389
 Drawing Title and Number
 Third Floor Interior Elevations
 8/11/06

A8.33



A8.33