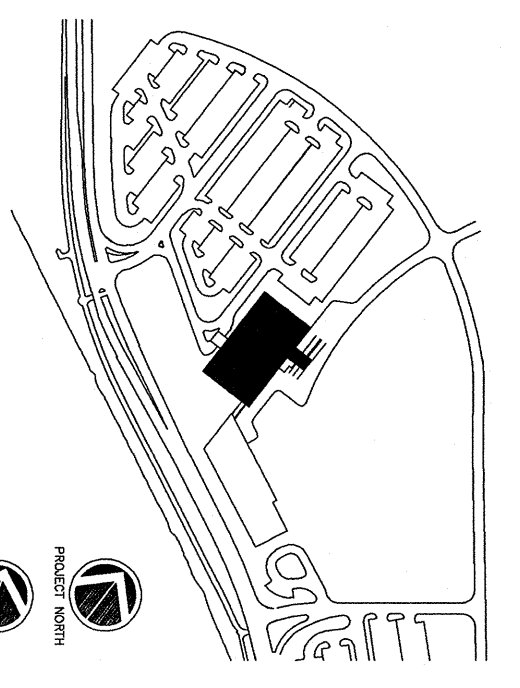


7 LOCKER/CHANGING RM-S3026
1/4"=1'-0"

8 LOCKER/CHANGING RM-S3026
1/4"=1'-0"

9 CORRIDOR-S3X110
1/4"=1'-0"

- GENERAL NOTES:**
1. SEE INTERIOR DETAILS A126 FOR BLINDED WALL PROTECTION & HAND RAILS
 2. SEE FINISH PLANS FOR EXTENSIVE FINISH MATERIAL
 3. SEE A6.07/A6.08 FOR CASWORK LEGEND & DETAILS
 4. SEE A6.06 FOR ACCESSORY MOUNTING HEIGHTS



Consultant:
 CIVIL ENGINEER: Associated Engineers, Inc.
 778 Main Street, Suite 8
 South Portland, ME 04106
 Phone: (207) 711-1121
 Fax: (207) 879-0896

Consultant:
 ASSOCIATE ARCHITECT/STRUCTURAL ENGINEER
 144 Fore Street P.O. Box 618
 Portland, ME 04101
 Phone: (207) 772-3846
 Fax: (207) 772-1070

Consultant:
 VENDOR: ELECTRICAL ENGINEER
 Bird, Row + Althaus Consulting Engineers, LLC
 The Arsenal on the Corners
 Waterville, ME 02472-5789
 Phone: (207) 872-1111
 Fax: 517.924.9329

Consultant:
 EQUIPMENT PLANNING
 Gene Burton & Associates
 Franklin, Tennessee 37027
 Phone: (615) 378-3100
 Fax: (615) 378-3114

Consultant:
 CONSTRUCTION MANAGER
 Globe Building Company
 Providence, Rhode Island 02903
 Phone: (401) 466-5115
 Fax: (401) 466-5116

Consultant:
 FOOD SERVICE
 Food Service, LLC
 1808 West End Ave. Suite 1400
 Nashville, TN 37203-6591
 Phone: (615) 221-7233
 Fax: (615) 221-5689

It is the responsibility of the Construction Sub-Contractors to verify all dimensions and notes before proceeding with any work.

Date: 11/10/06
 Drawn By: Frol-Brend For
 ART/KD
 Scale:
 AS NOTED

Francis

Cauffman

Foley

Hoffmann

Francis Cauffman Architects Ltd.
 2120 Main Street
 Portland, ME 04103
 Phone: (207) 219-5662
 Fax: (207) 219-5650

MERCY
 Mercy Health Care
 System of Maine
 FORE RIVER SHORT
 STAY HOSPITAL
 Third Floor Interior Elevations
 8/24/06

A8.32