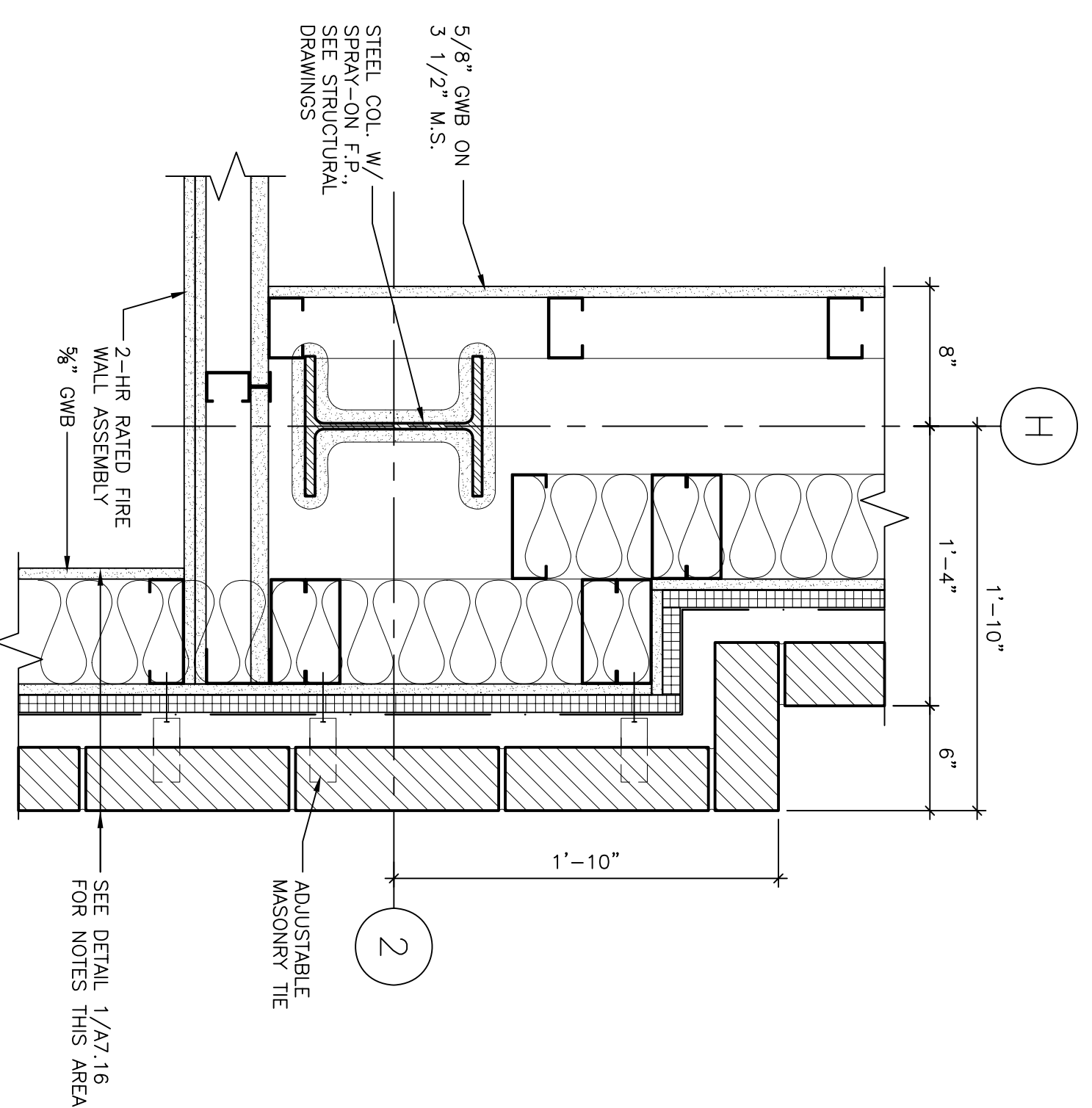
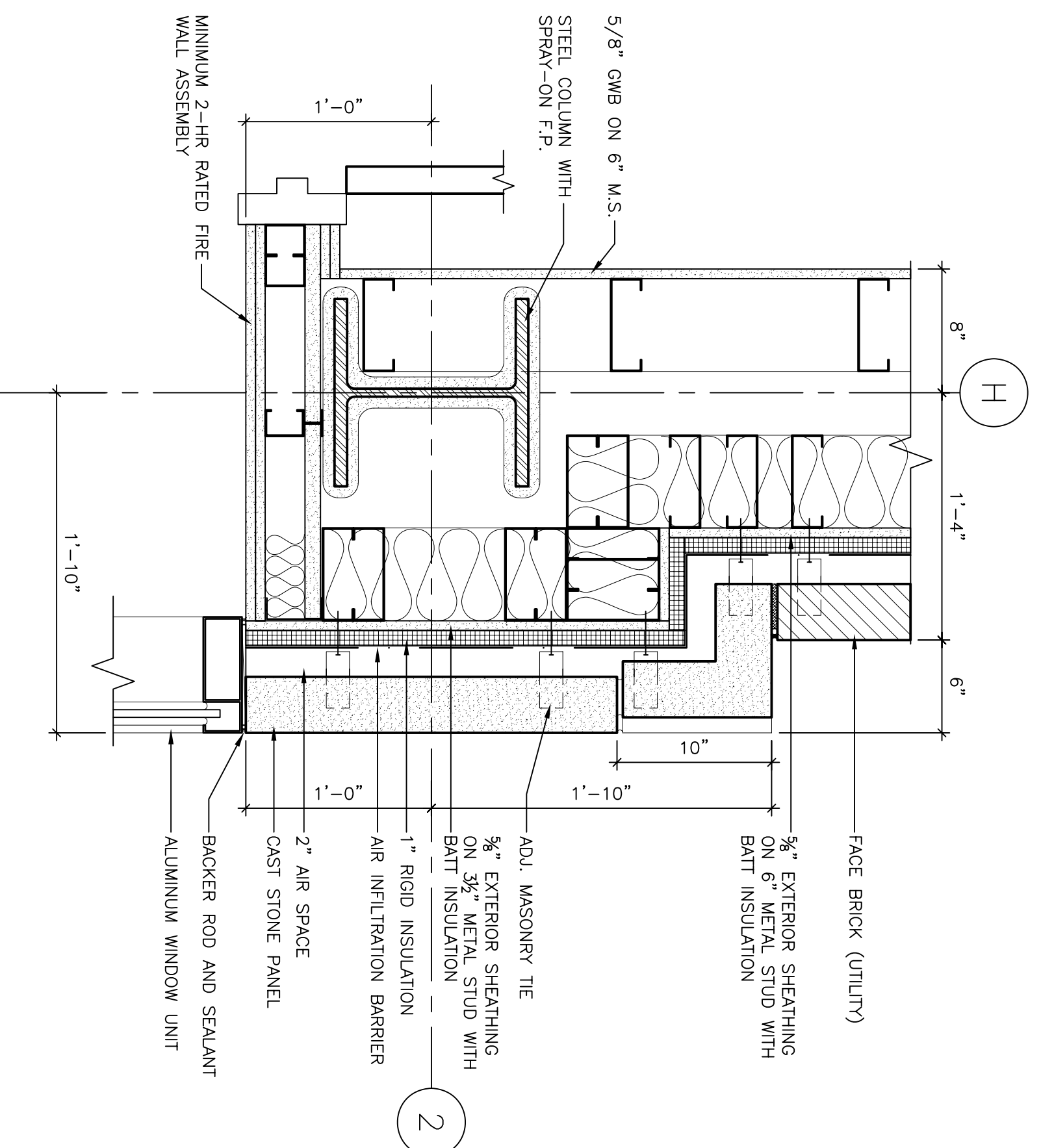


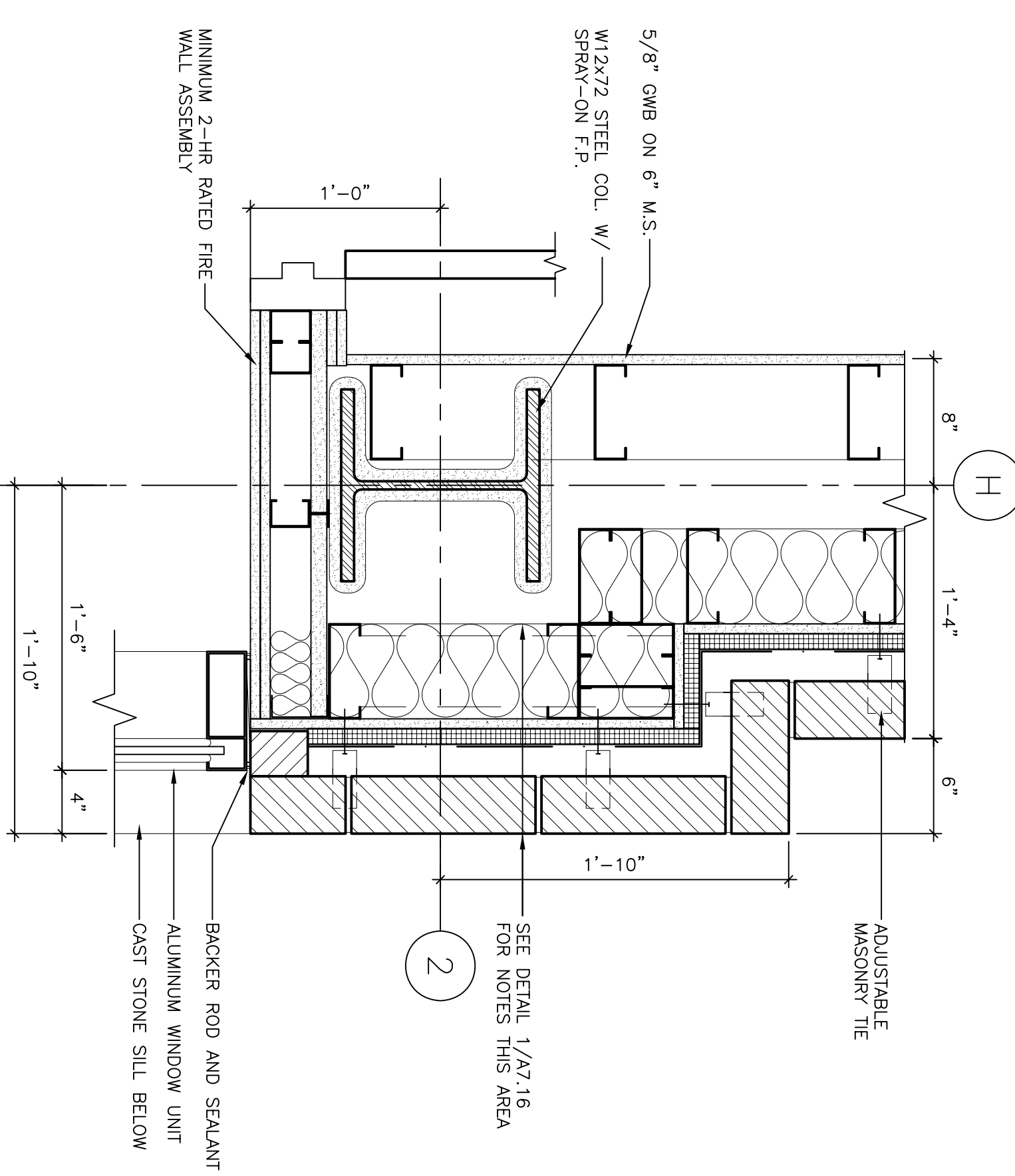
1 PLAN DETAIL -GROUND FLOOR
SCALE: 1/2"=1'-0"



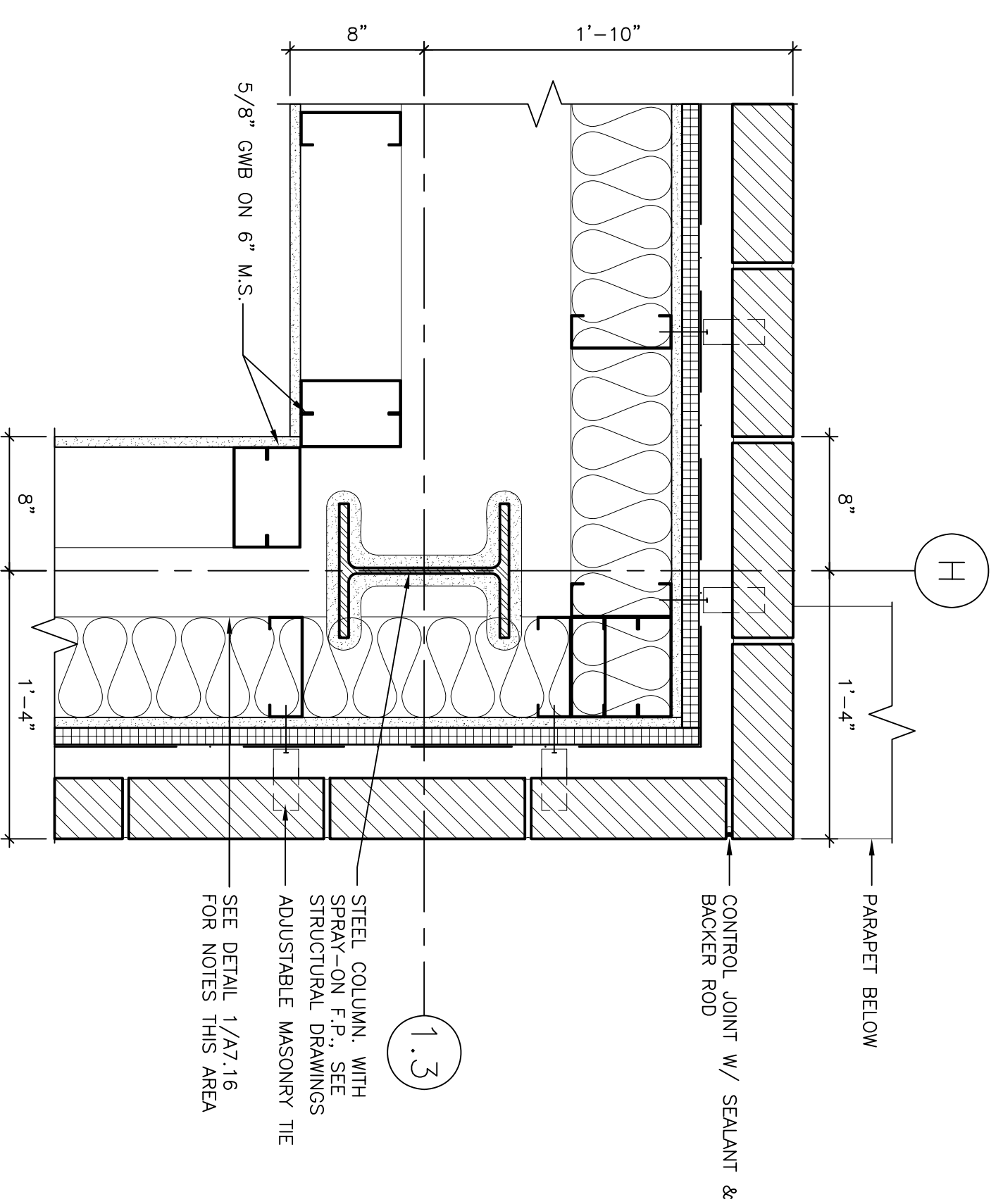
2 PLAN DETAIL -GROUND FLOOR
SCALE: 1/2"=1'-0"



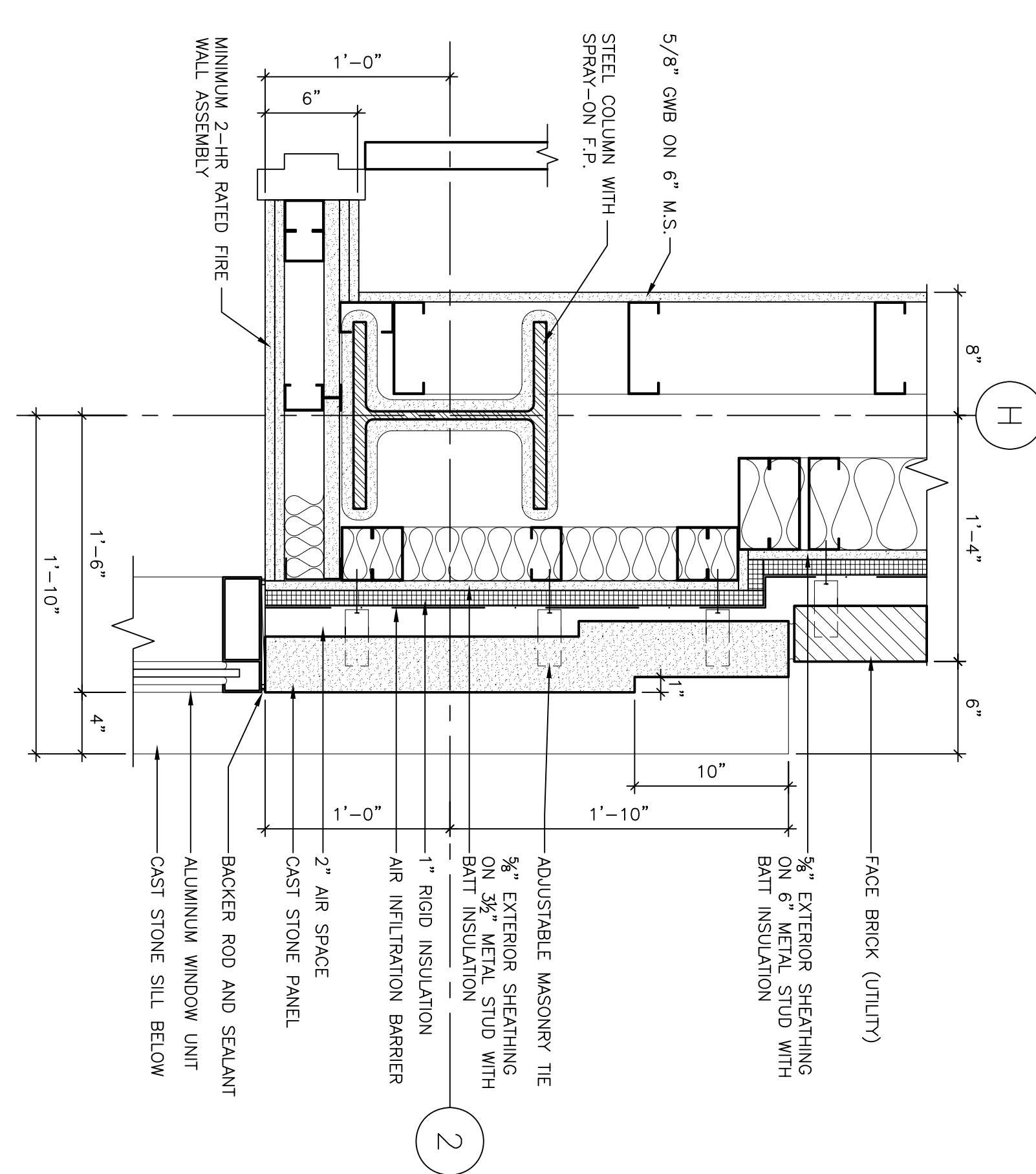
3 PLAN DETAIL -FIRST FLOOR
SCALE: 1/2"=1'-0"



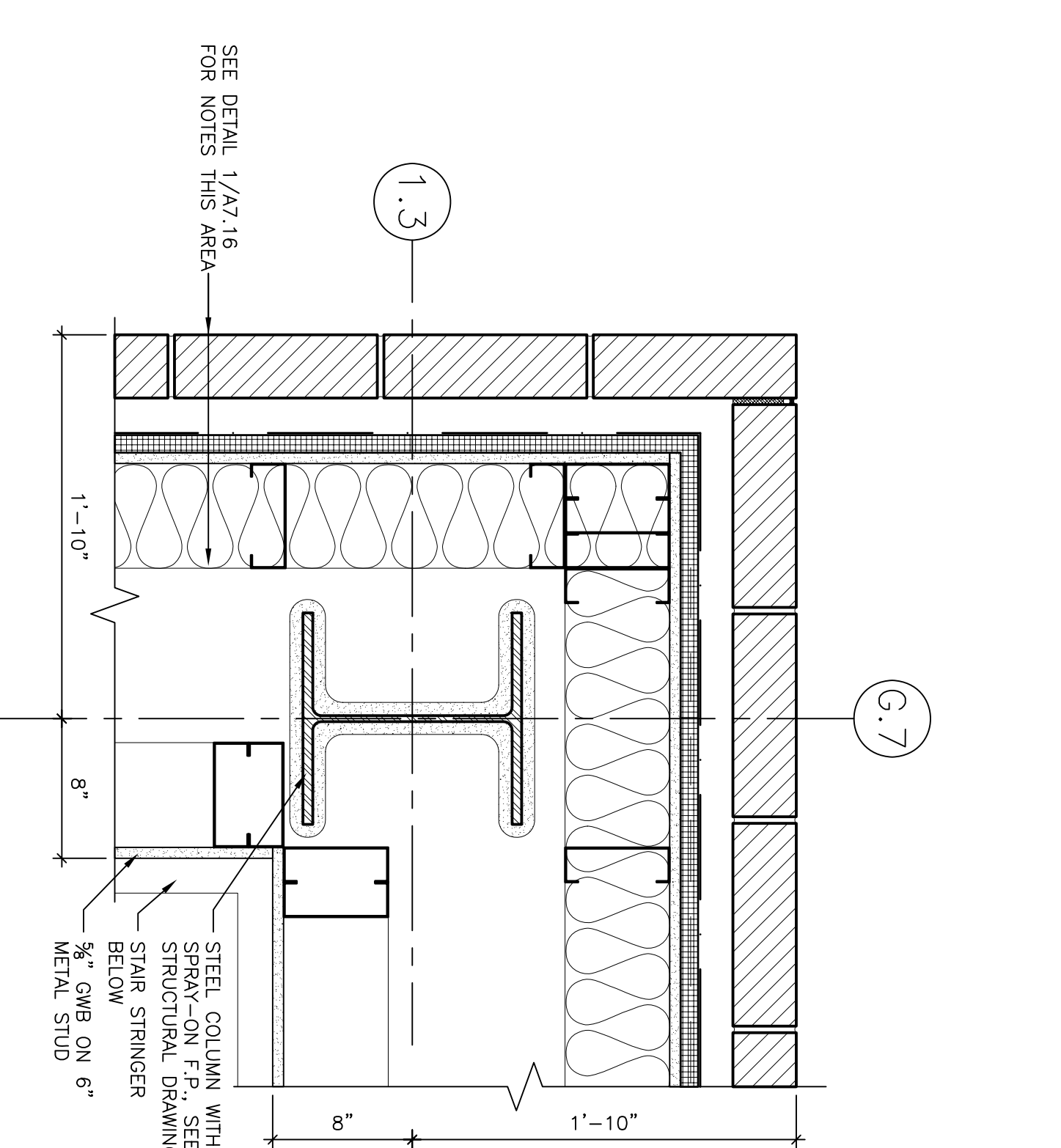
4 PLAN DETAIL -SECOND FLOOR
SCALE: 1/2"=1'-0"



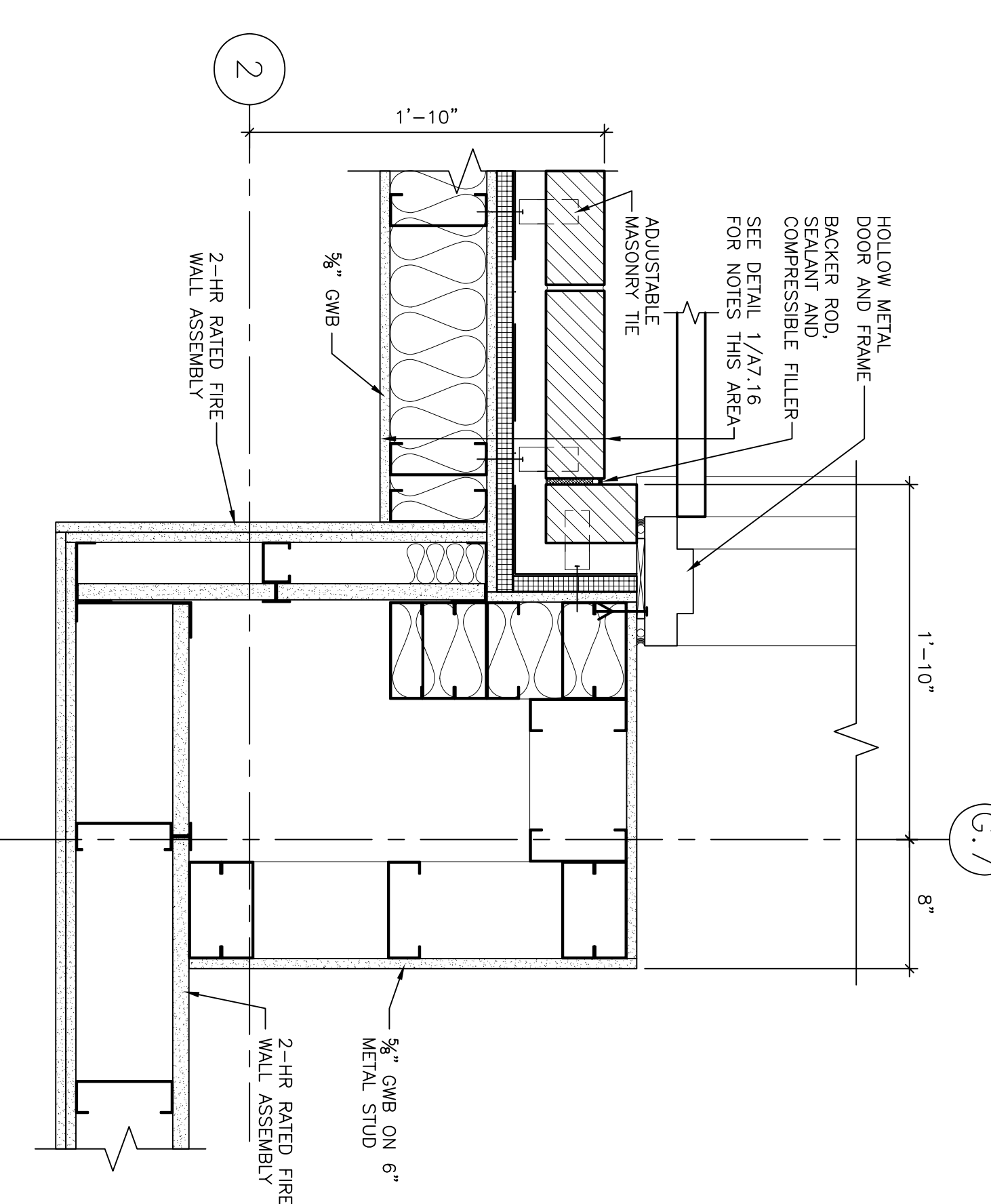
5 PLAN DETAIL -THIRD, FOURTH AND FIFTH FLOOR
SCALE: 1/2"=1'-0"



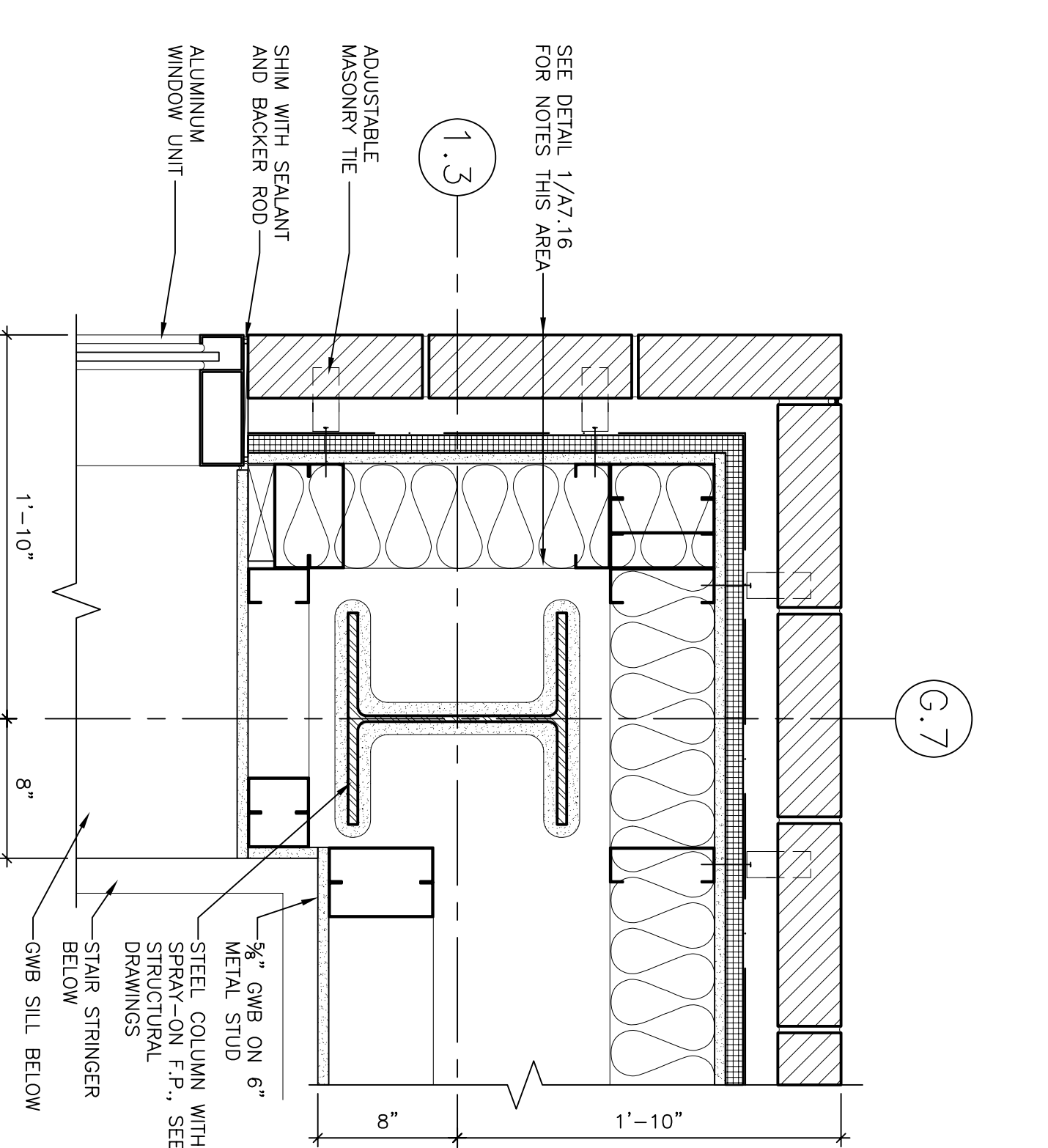
6 PLAN DETAIL -THIRD AND FOURTH FLOOR
SCALE: 1/2"=1'-0"



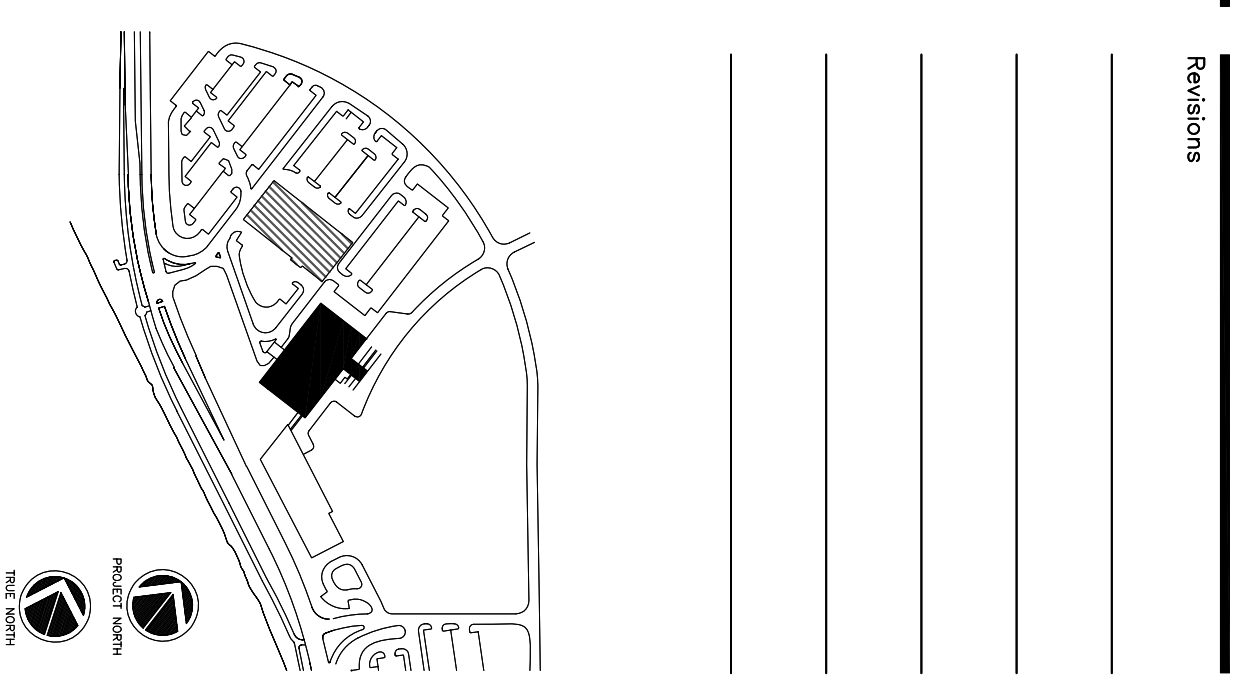
7 PLAN DETAIL -FOURTH FLOOR
SCALE: 1/2"=1'-0"



8 PLAN DETAIL -FOURTH FLOOR
SCALE: 1/2"=1'-0"



9 PLAN DETAIL -FIFTH FLOOR
SCALE: 1/2"=1'-0"



Revisions

Consultant:
OHL ENGINEER
Structural Engineers, Inc.
278 Main Street, Suite 806
Providence, Rhode Island 02903
Phone: (401) 772-1121
Fax: (401) 879-0886

Consultant:
MECHANICAL/ELECTRICAL ENGINEER
Burd, Roe & Athous Consulting Engineers, LLC
311 Arsenal Street, Providence, RI 02903
Phone: (401) 772-1121
Fax: (401) 879-0886

Consultant:
EQUIPMENT PLANNING
Dodge Burton & Associates
1000 North Main Street, Suite 200
Providence, Rhode Island 02903
Phone: (401) 321-5991
Fax: (401) 321-5991

Consultant:
CONSTRUCTION MANAGER
7 Jackson Walkway
Providence, Rhode Island 02903
Phone: (401) 458-5516
Fax: (401) 458-5516

Consultant:
FOOD SERVICE
Rood Service, LLC
1808 West End Ave, Suite 1400
Providence, Rhode Island 02903
Phone: (401) 321-5991
Fax: (401) 321-5991

Is the responsibility of the Construction Manager/General Contractor and all costs and accident conditions of prior work, by retained and occur before proceeding with any work.

Date: 10.02.06
Drawn By: MAF/JLV/CLB/CLU/LMS
Scale: AS NOTED

Francis
Cauffman

Foley
Hoffmann

Project Title:
Francis Cauffman
Foley Hoffmann
Architects Ltd.
210 Acorn Street
Providence, RI 02903
Phone: (401) 275-9886

Mercy Health
System of Maine
FORE RIVER SHORT
STAY HOSPITAL



Project Number:
F05-4989
Drawing Title and Number:
Plan Details at Stairs

A7.16