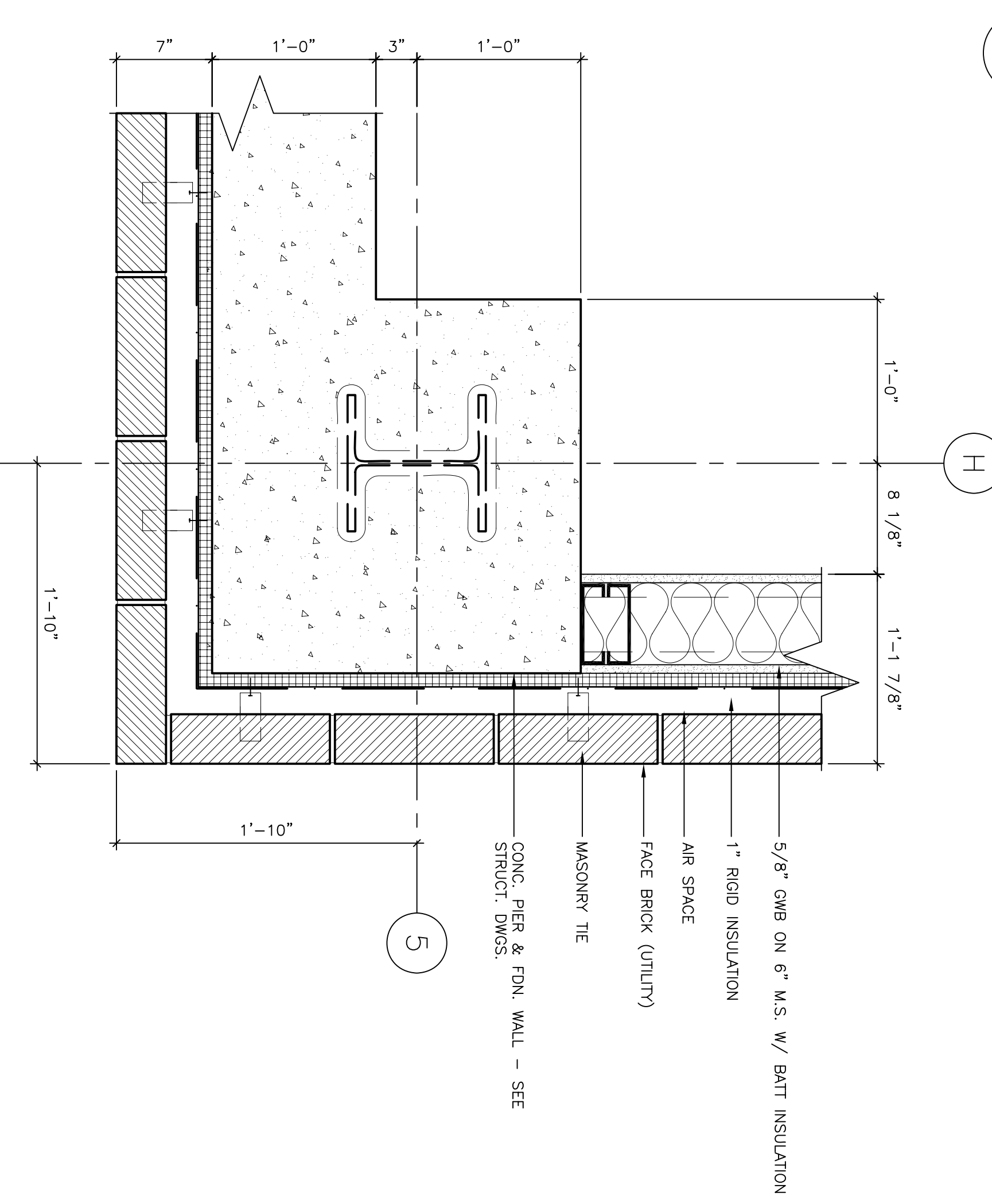
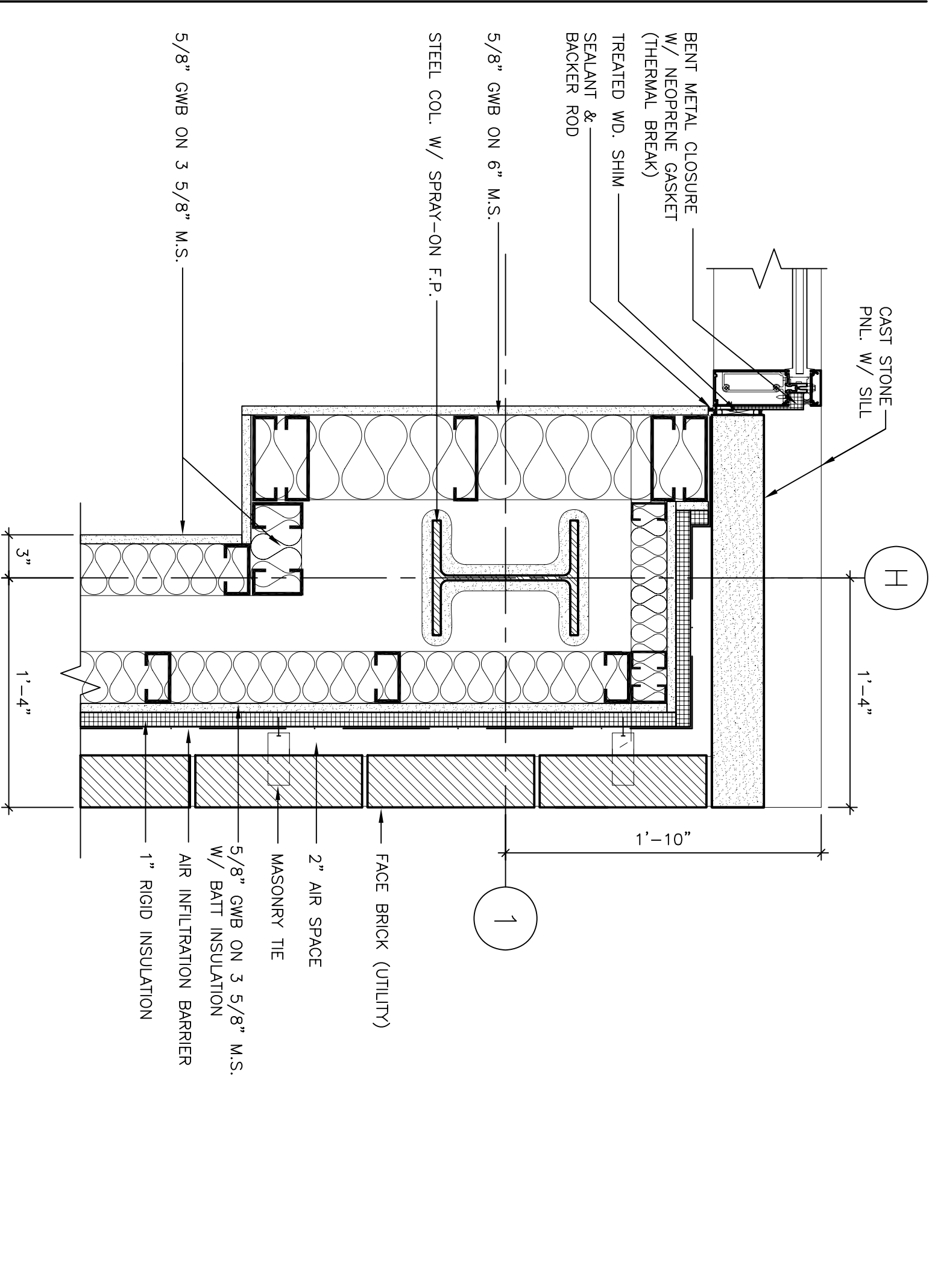


1 GROUND FLOOR PLAN DETAIL @ COL. 5/H & WINDOW UNIT TYPE W1
SCALE: 1/2"=1'-0"



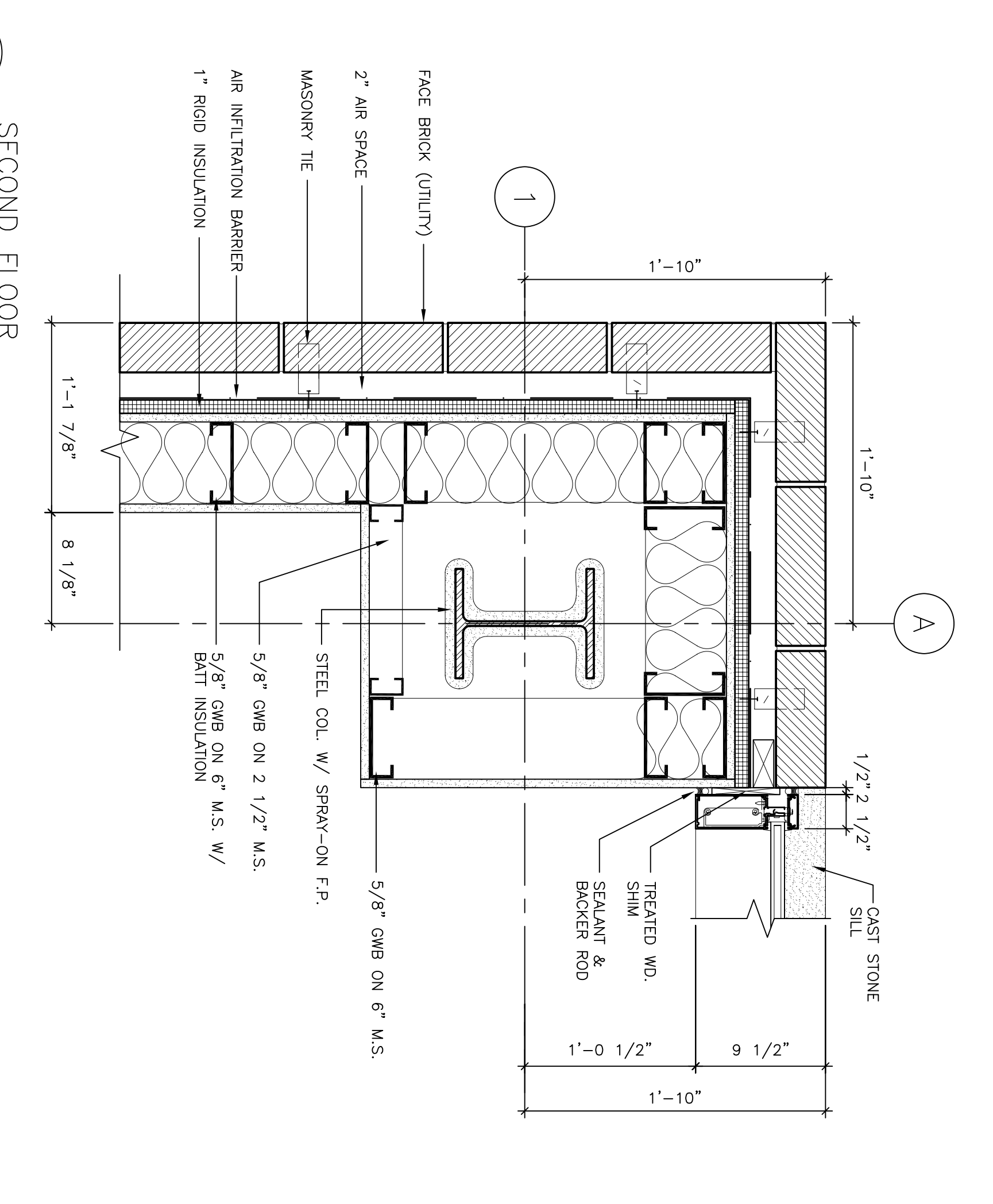
2 GROUND FLOOR PLAN DETAIL @ COL. 5/H (BELOW WINDOW UNIT TYPE W1)
SCALE: 1/2"=1'-0"



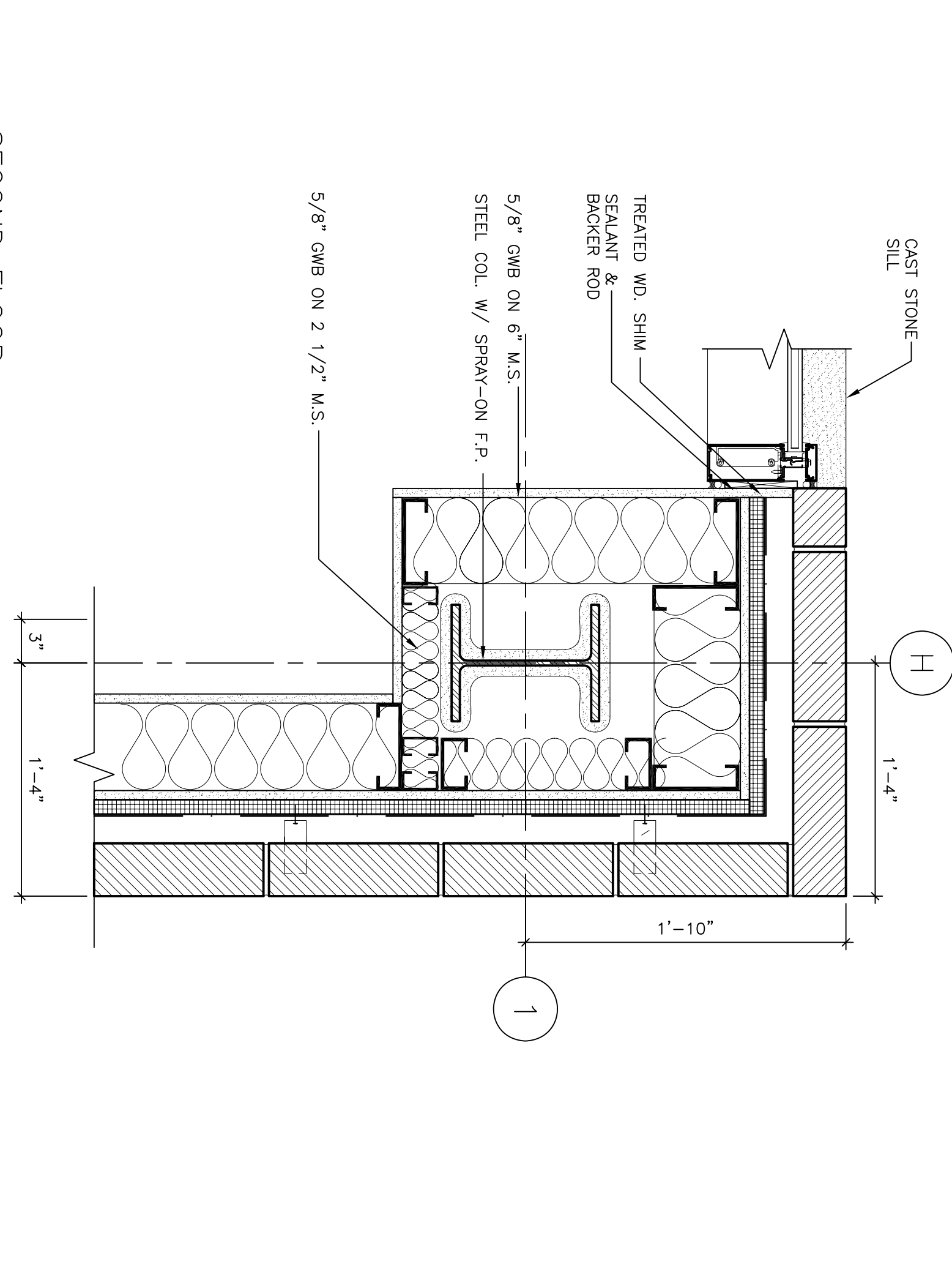
4 FIRST FLOOR PLAN DETAIL @ COL. 1/H
SCALE: 1/2"=1'-0"



5 NOT USED
SCALE: 1/2"=1'-0"



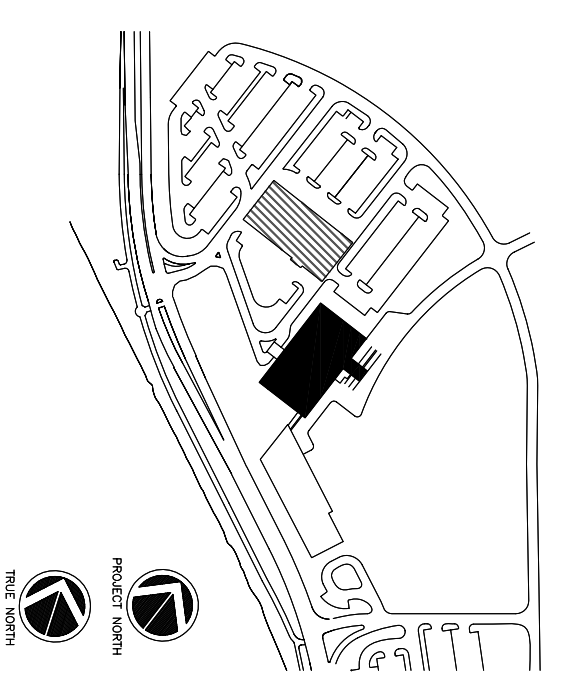
7 SECOND FLOOR PLAN DETAIL @ COL. 1/A
SCALE: 1/2"=1'-0"



8 SECOND FLOOR PLAN DETAIL @ COL. 1/H
SCALE: 1/2"=1'-0"

3 NOT USED
SCALE: 1/2"=1'-0"

6 SECOND FLOOR PLAN DETAIL @ COL. 5/G
SCALE: 1/2"=1'-0"



Revisions

Consultant:
CON/LE ENGINEER
278 Main Street, Suite 806
Providence, Rhode Island 02903
Phone: (401) 772-1121
Fax: (401) 879-0896

Consultant:
SMART ARCHITECT/STRUCTURAL ENGINEER
144 Fore Street P.O. Box 618
Providence, Rhode Island 02903
Phone: (401) 772-3846
Fax: (401) 772-1070

Consultant:
MECHANICAL/ELECTRICAL ENGINEER
Burd, Rod, & Atkins Consulting Engineers, LLC
311 Asenol Street
Woburn, MA 02472-5789
Phone: (617) 224-1116
Fax: (617) 224-8339

Consultant:
EQUIPMENT PLANNING
Ergo Barton & Associates
1000 North Main Street
Franklin, Tennessee 37067
Phone: (615) 321-1100
Fax: (615) 321-3114

Consultant:
CONSTRUCTION MANAGER
7 Jackson Walkway
Providence, Rhode Island 02903
Phone: (401) 458-5516
Fax: (401) 458-5516

Consultant:
POOL SERVICE
ROCK SERVICES, LLC
1808 West End Ave, Suite 1400
Providence, Rhode Island 02903
Phone: (401) 321-5591
Fax: (401) 321-5689

Notes:
1. It is the responsibility of the Construction Manager/General Contractor and all subcontractors to verify all dimensions and conditions of prior work by related trades before proceeding with any work.

Date: CORE & SHELL ISSUED
10.02.06 FOR CONSTRUCTION
Drawn By: MAF/JUL/CLB/CLU/LMS
Scale: AS NOTED

Francis

Caufman

Foley

Hoffmann

Project Title:
Mercy Health
System of Maine
FORE RIVER SHORT
STAY HOSPITAL



Project Number:
F05-4898
Drawing Title and Number:
Misc. Details

A7.13