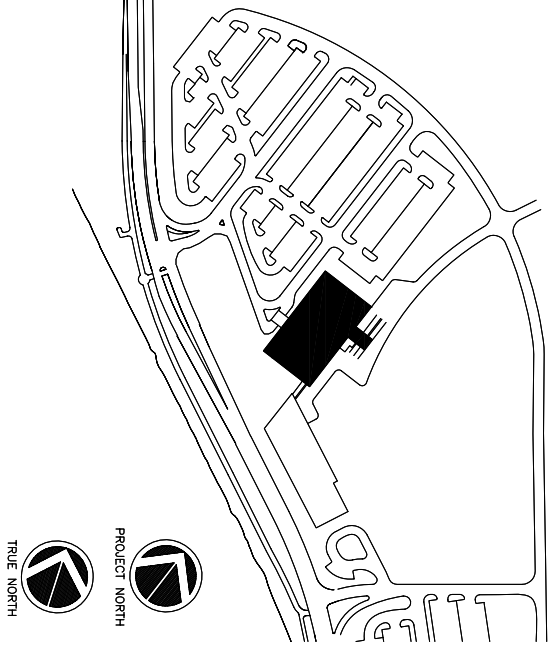


**CASEWORK GENERAL NOTES:**

1. PROVIDE FILLER PANELS AT ALL EXPOSED PLUMBING SPACE LOCATIONS.
2. PROVIDE KNEE SPACE FILLER PANELS AT ALL APRONS.
3. PROVIDE PANELS, LEGS OR RAILS WHERE REQUIRED FOR UNSUPPORTED ENDS OF TOPS & PROVIDE PIPE SUPPORT FRAMES AS REQUIRED. TO ALL BASE CABINETS & PLUMBING SPACES SHALL RECEIVE MOLDED EPOXY RESIN TOPS, UNO.
4. PROVIDE FILLER PANELS AT ALL BASE CABINETS NOT ADJACENT TO WALLS OR OTHER CABINETS, & AT ALL CHANGES IN CABINET TOP ELEVATIONS, UNO.
5. UNO, NOT LOCATE JOINTS IN TOPS AT APRONS OR ABOVE UNDERCOUNTER EQUIPMENT LOCATIONS.
6. COORDINATE LOCATIONS & PROVIDE HOLES IN TOPS FOR ALL SINKS, FAUCETS, ETC., AS SHOWN & AS REQUIRED FOR EQUIPMENT.
7. PROVIDE OUTLET WITH TAILPIPE AT ALL SINKS.
8. ALL SERVICE PIPING TO SINKS, FAUCETS, COCKS & EQUIPMENT SHALL BE PROVIDED & INSTALLED BY THE MECHANICAL CONTRACTOR.
9. ALL PLAN DIMENSIONS GIVEN AT CASEWORK/TOP LOCATIONS ARE TO EDGE OF TOPS (NOT FACE OF CASEWORK)
10. ADD GROWER AT EACH V.C. DATA AND POWER LOCATION
11. REFER TO SHEET 6.07 FOR SCHEDULE OF TYPES AND ENLARGED DETAILS.



Consultant  
 Civil Engineer  
 DeLuca-Hoffman Associates, Inc.  
 2726 Robinson Street, Suite 816  
 Philadelphia, PA 19103  
 Phone: (207) 775-1121  
 Fax: (207) 879-0898

Consultant  
 ASSOCIATE ARCHITECT/STRUCTURAL ENGINEER  
 SMART  
 311 Arsenal Street, Box 818  
 Portland, Maine 04104  
 Phone: (207) 772-5846  
 Fax: (207) 772-1070

Consultant  
 MECHANICAL/ELECTRICAL ENGINEER  
 Bond, Koon + Aronson Consulting Engineers, LLC  
 1000 North Street, Suite 200  
 311 Arsenal Street, Box 818  
 Portland, Maine 04104  
 Phone: (207) 772-5846  
 Fax: (207) 772-1070

Consultant  
 EQUIPMENT PLANNING  
 Equipment Planning  
 1893 General George Patton Drive  
 Franklin, Tennessee 37067  
 Phone: (615) 276-3114  
 Fax: (615) 276-3114

Consultant  
 CONSTRUCTION MANAGER  
 Construction Manager  
 7 Johnson Walkway  
 Providence, Rhode Island 02903  
 Phone: (401) 456-8906  
 Fax: (401) 456-5516

Consultant  
 Interior Finish  
 Interior Finishers, LLC  
 1808 West End Ave. Suite 1400  
 Nashville, Tennessee 37203  
 Phone: (615) 321-5591  
 Fax: (615) 321-5689

Consultant  
 Lighting  
 Lighting  
 1111/10/06 FINAL - ISSUE FOR BID  
 Drawn By: MAF/JUL/C/LB/C/LJ  
 Scale: AS NOTED

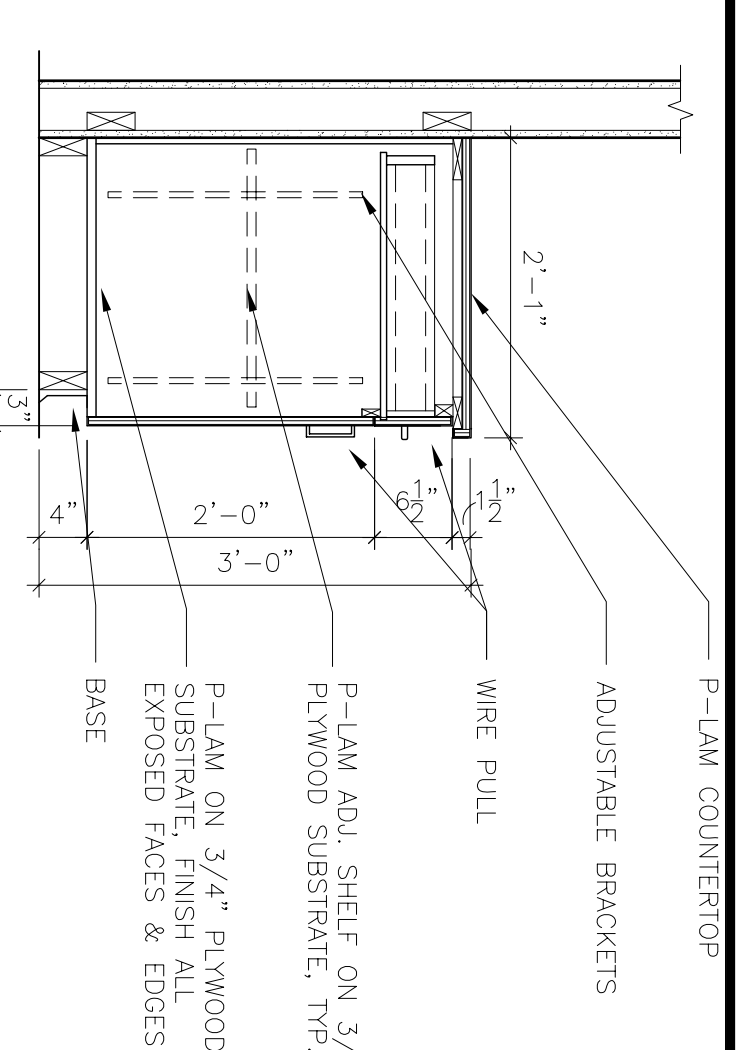
Francis  
 Cauffman  
 Foley

Hoffmann  
 Project Title  
 Mercy Health Core  
 System of Maine  
 FORE RIVER SHORT  
 STAY HOSPITAL

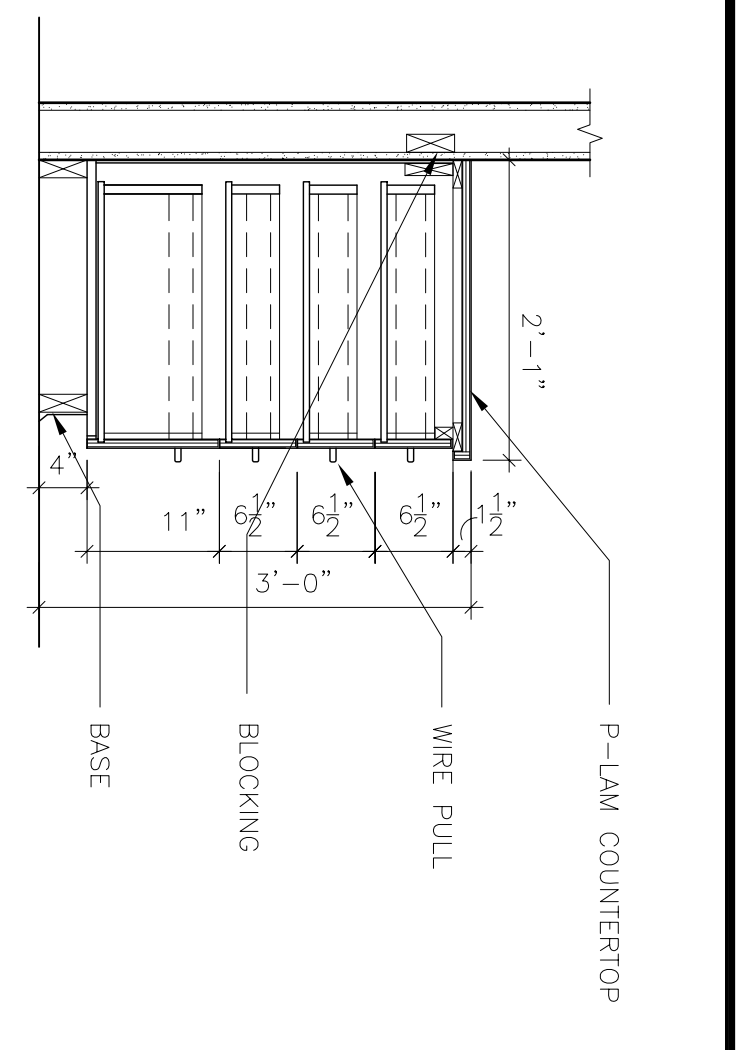
Project Title  
 Mercy Health Core  
 System of Maine  
 FORE RIVER SHORT  
 STAY HOSPITAL

Project Number  
 F05-4898  
 Drawing Title and Number  
 CASEWORK SECTIONS

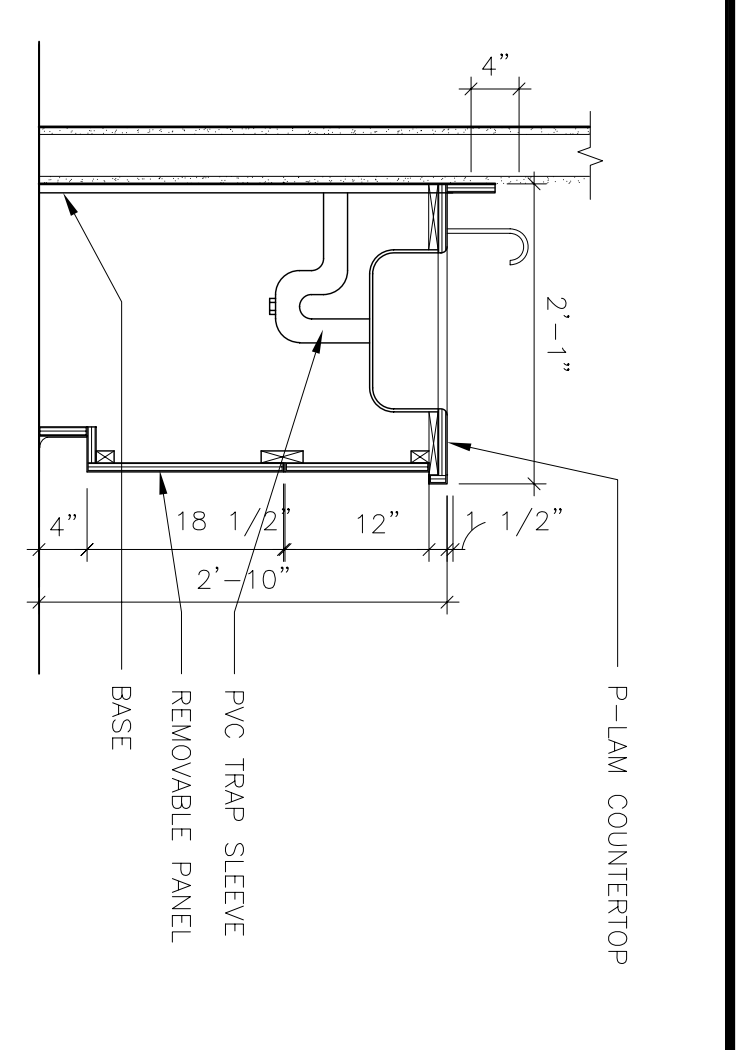
A6.08



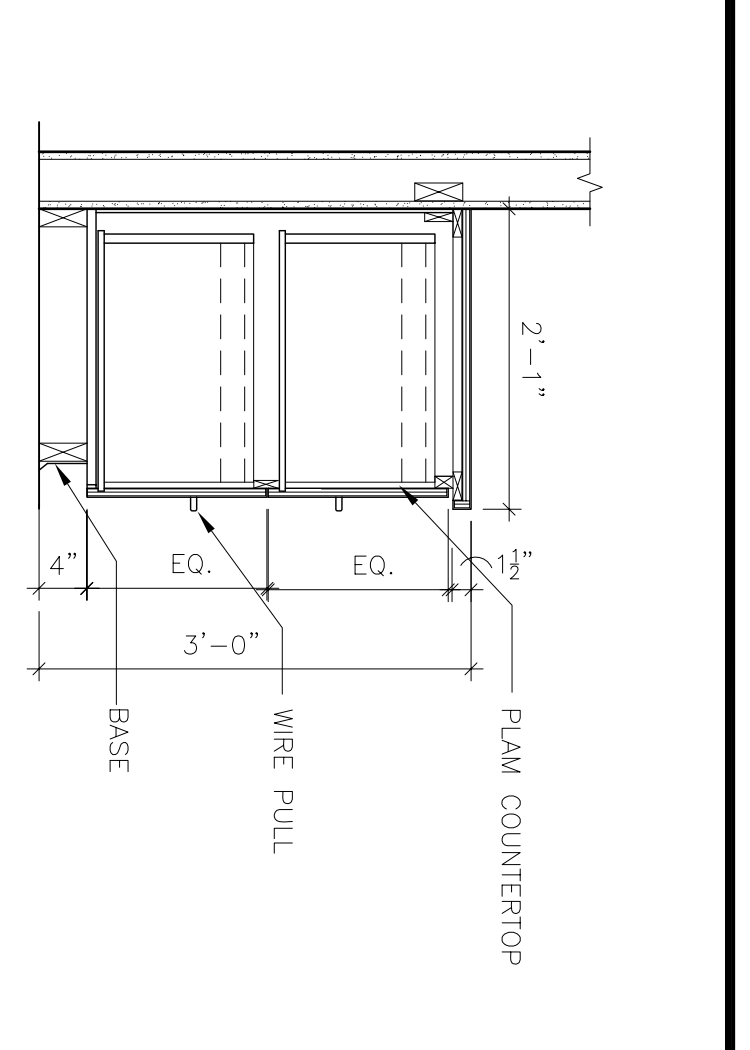
1 SECTION TYPES A/B/C  
 SCALE: 3/4"=1'-0"



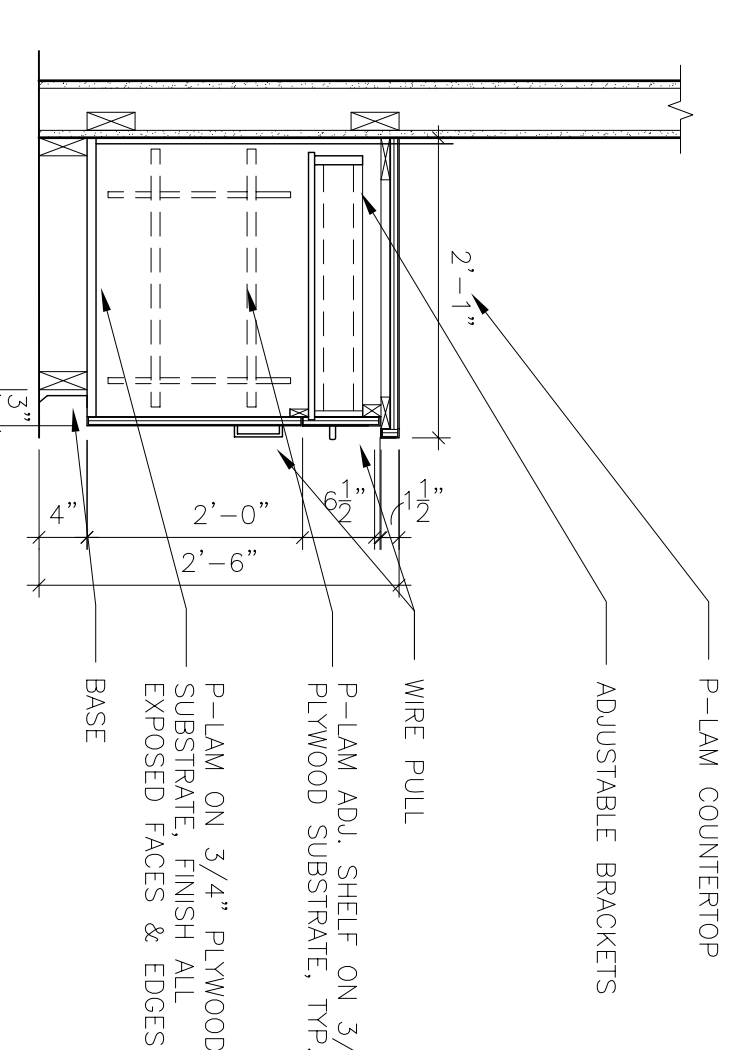
2 SECTION TYPE D  
 SCALE: 3/4"=1'-0"



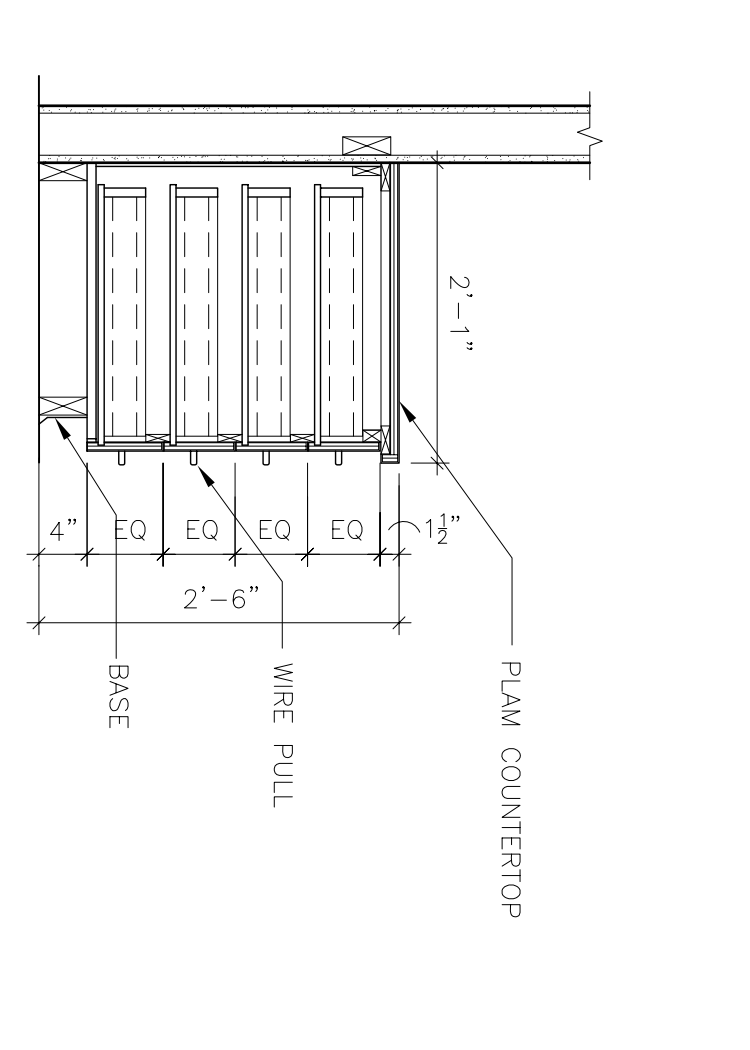
3 SECTION TYPE E  
 SCALE: 3/4"=1'-0"



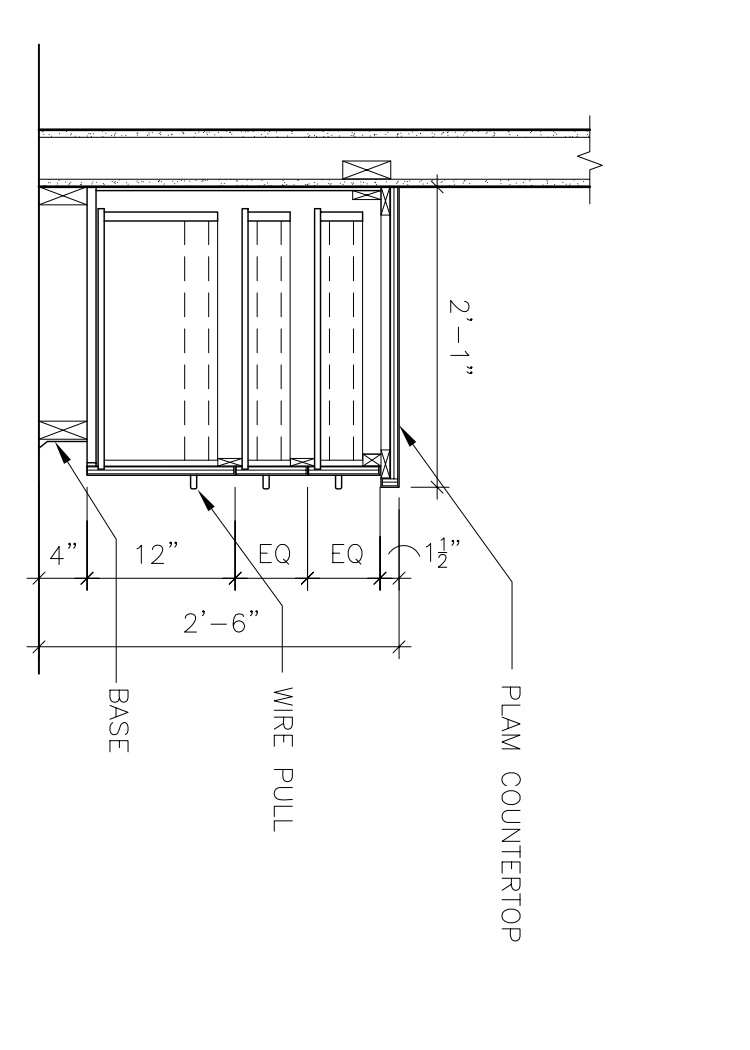
4 SECTION TYPE F  
 SCALE: 3/4"=1'-0"



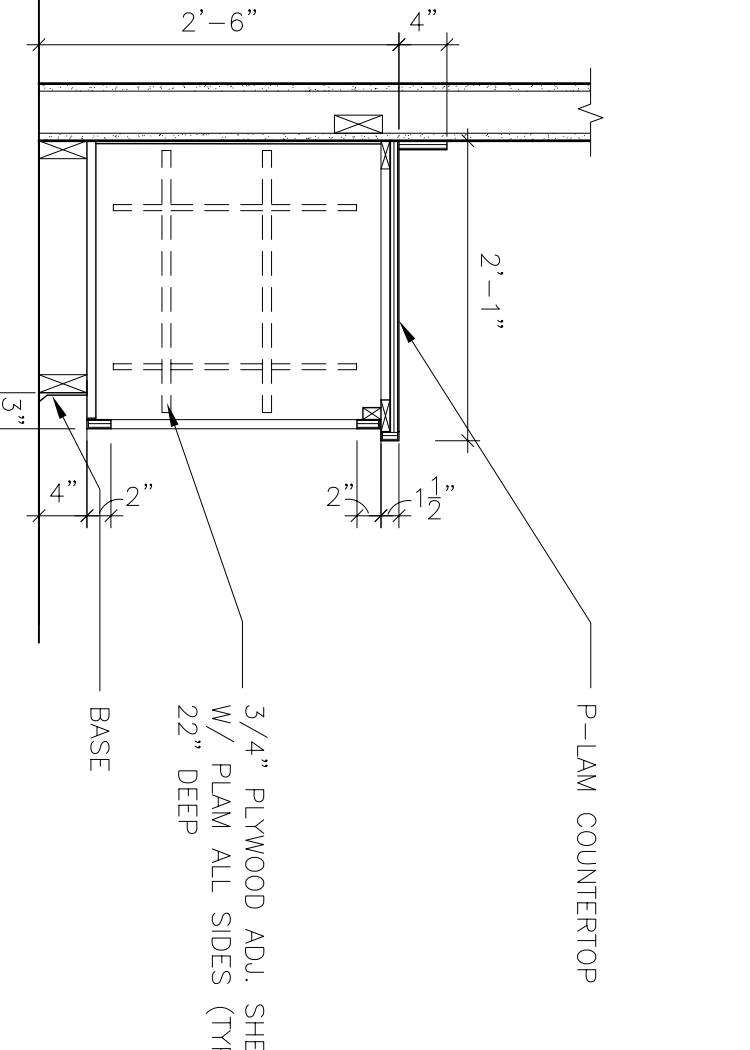
5 SECTION TYPES G/H/K  
 SCALE: 3/4"=1'-0"



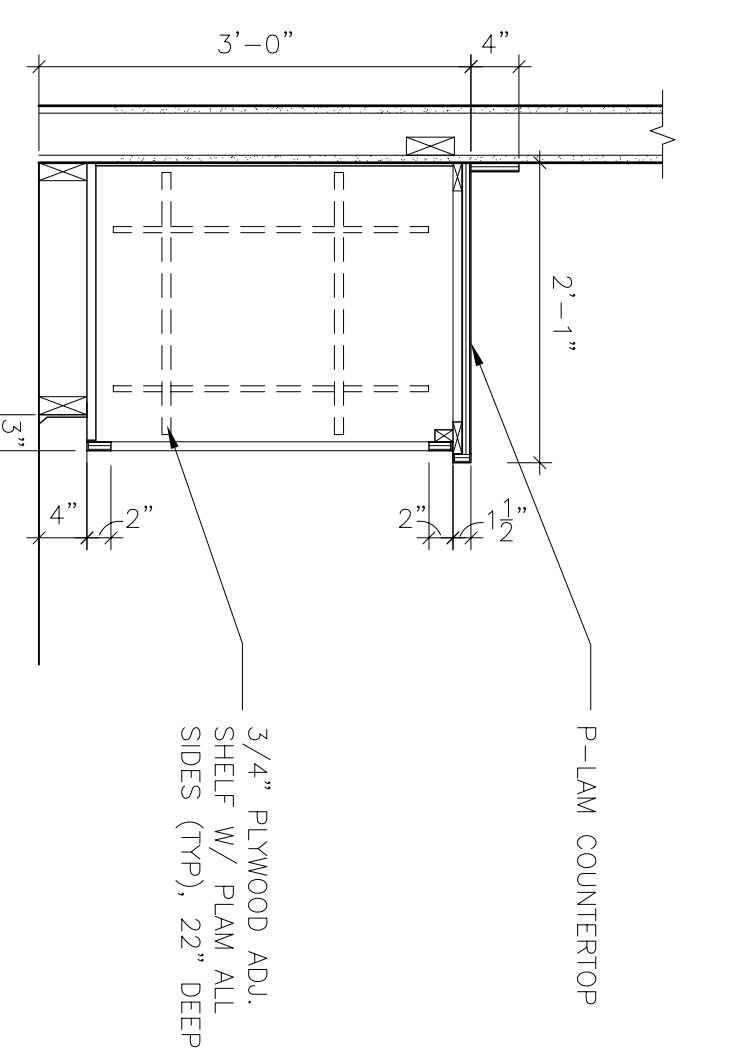
6 SECTION TYPE J  
 SCALE: 3/4"=1'-0"



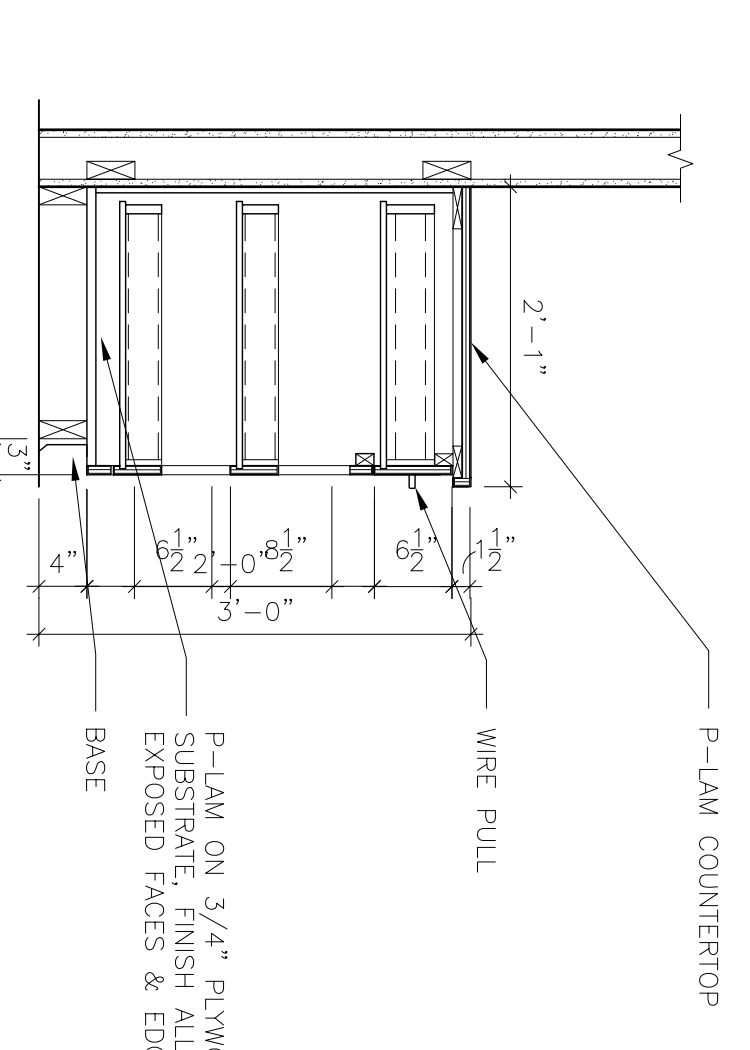
7 SECTION TYPE L  
 SCALE: 3/4"=1'-0"



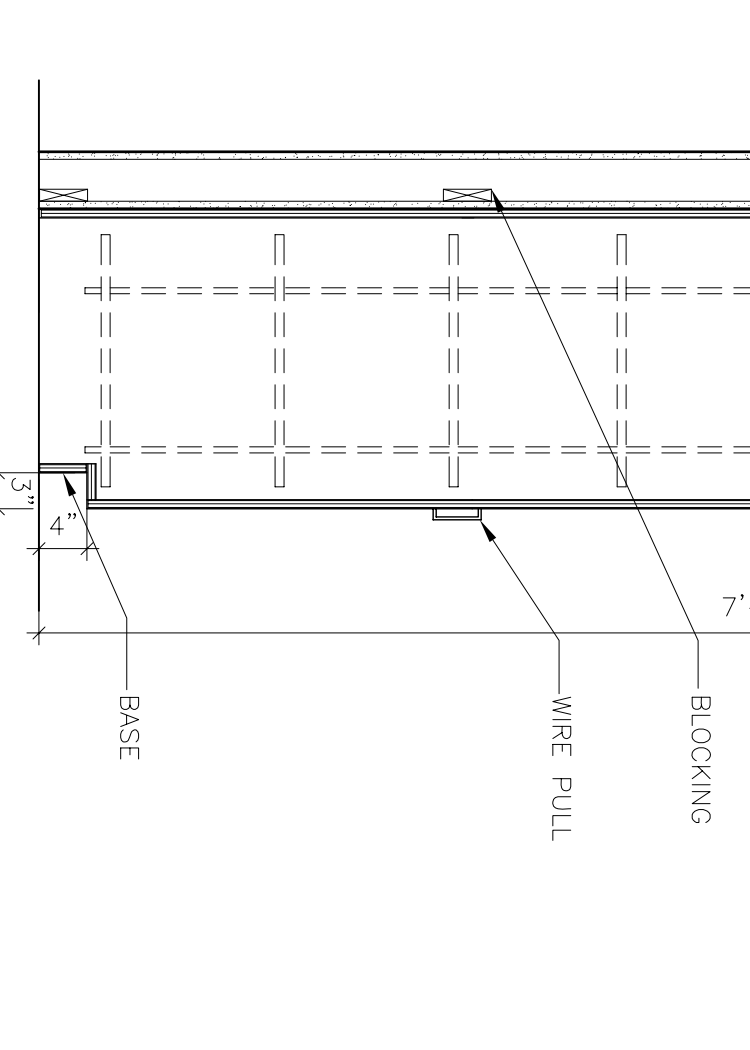
8 SECTION TYPES P/Q  
 SCALE: 3/4"=1'-0"



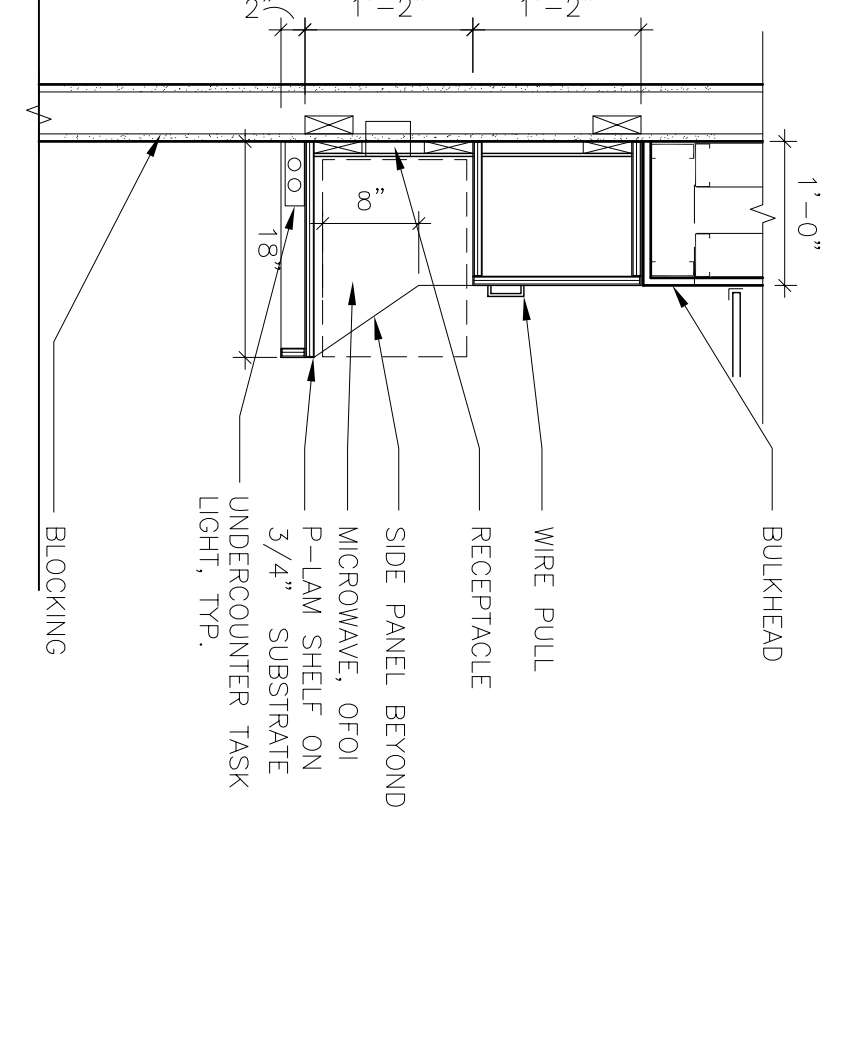
9 SECTION TYPES R/S  
 SCALE: 3/4"=1'-0"



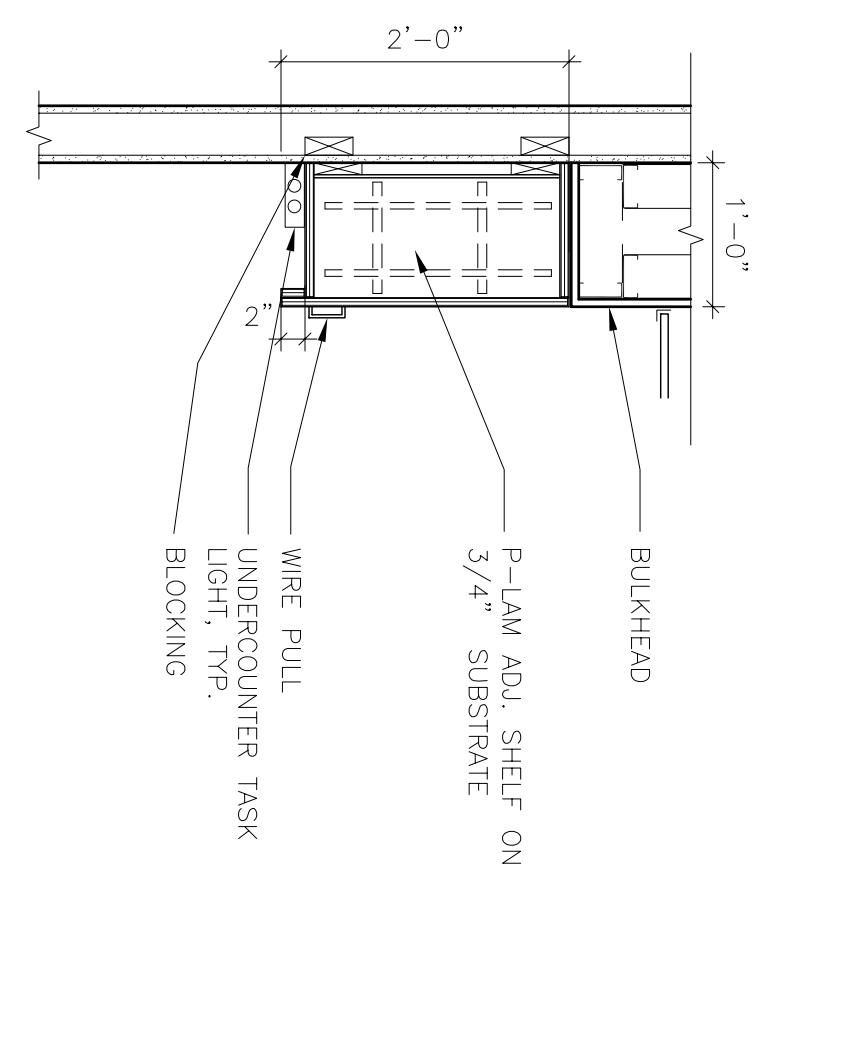
10 SECTION TYPE T  
 SCALE: 3/4"=1'-0"



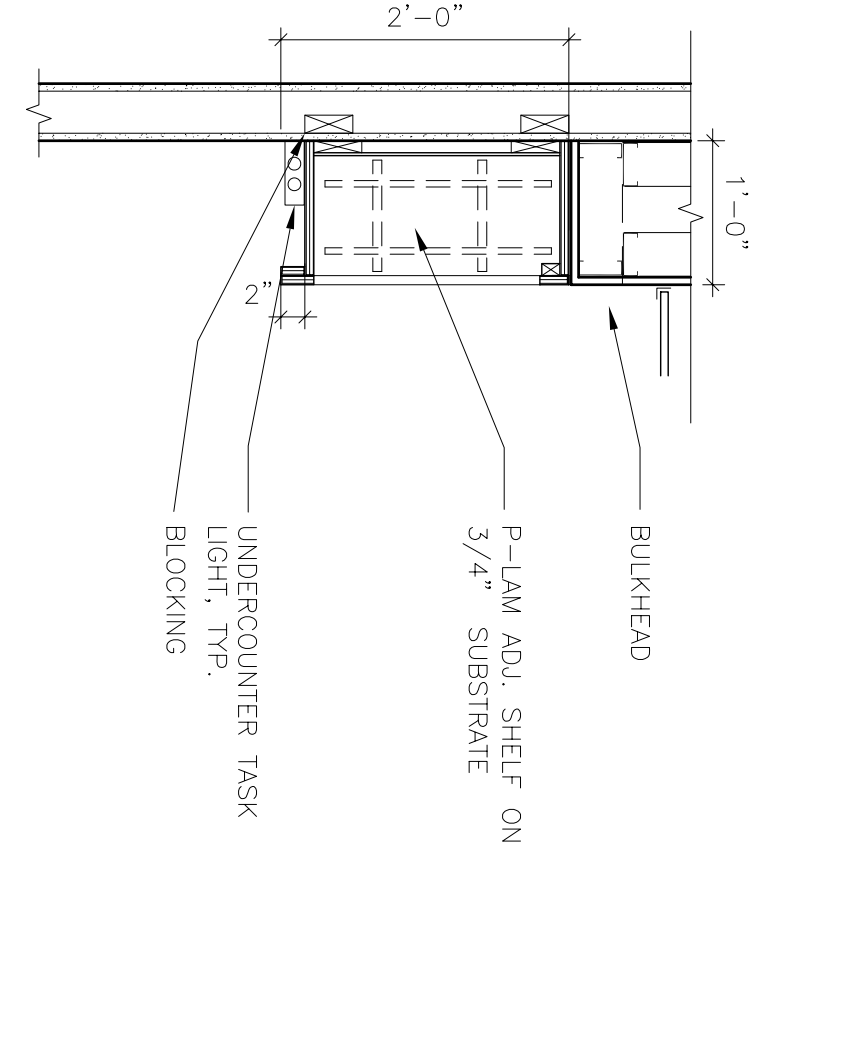
11 SECTION TYPE U  
 SCALE: 3/4"=1'-0"



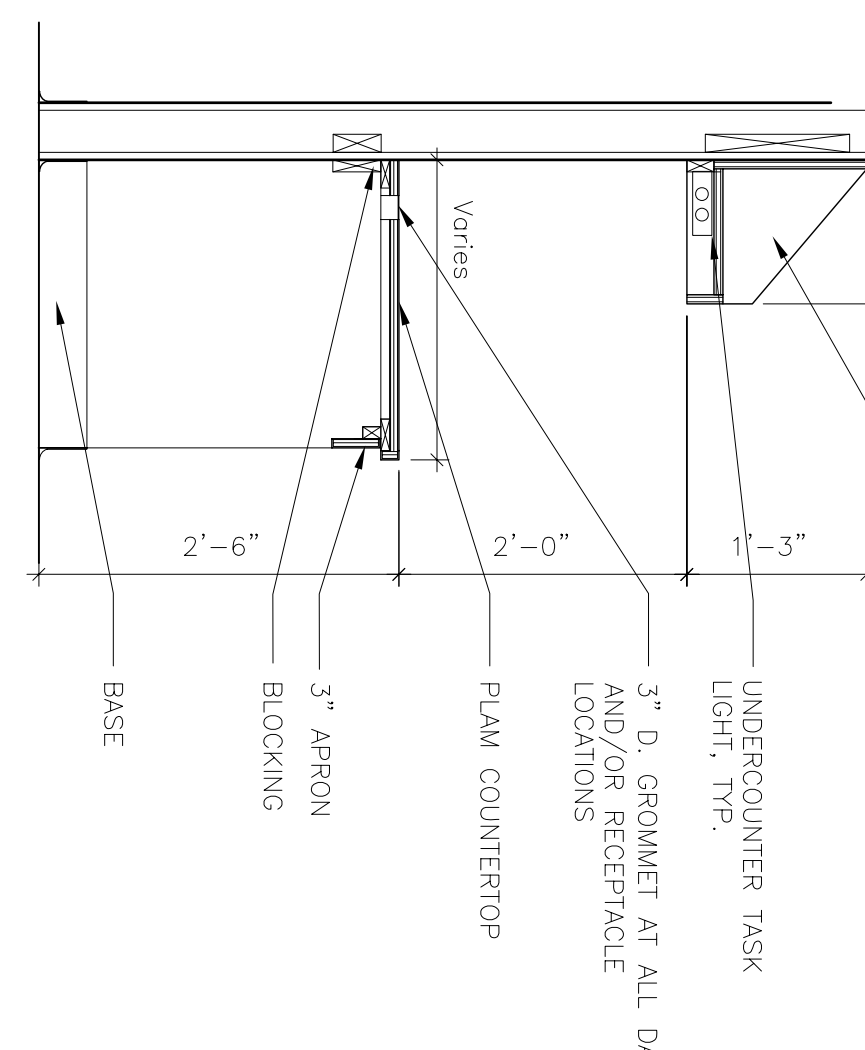
12 SECTION TYPE V  
 SCALE: 3/4"=1'-0"



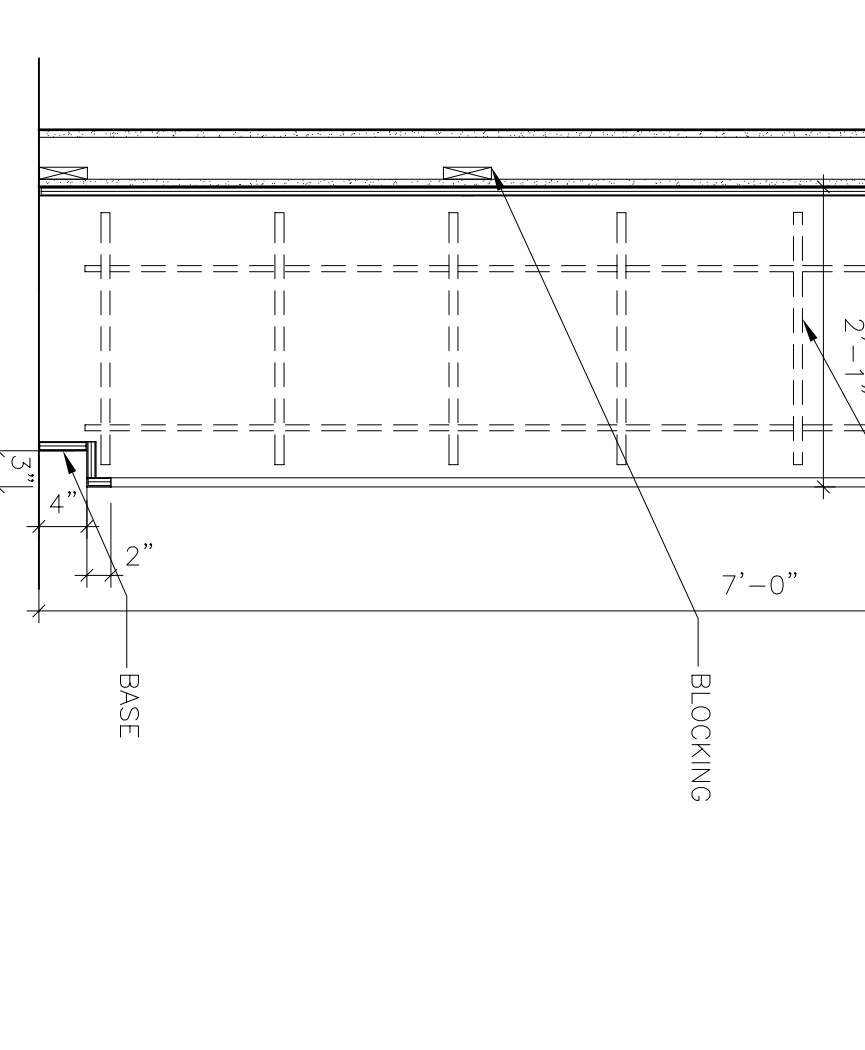
13 SECTION TYPES W/X/Y  
 SCALE: 3/4"=1'-0"



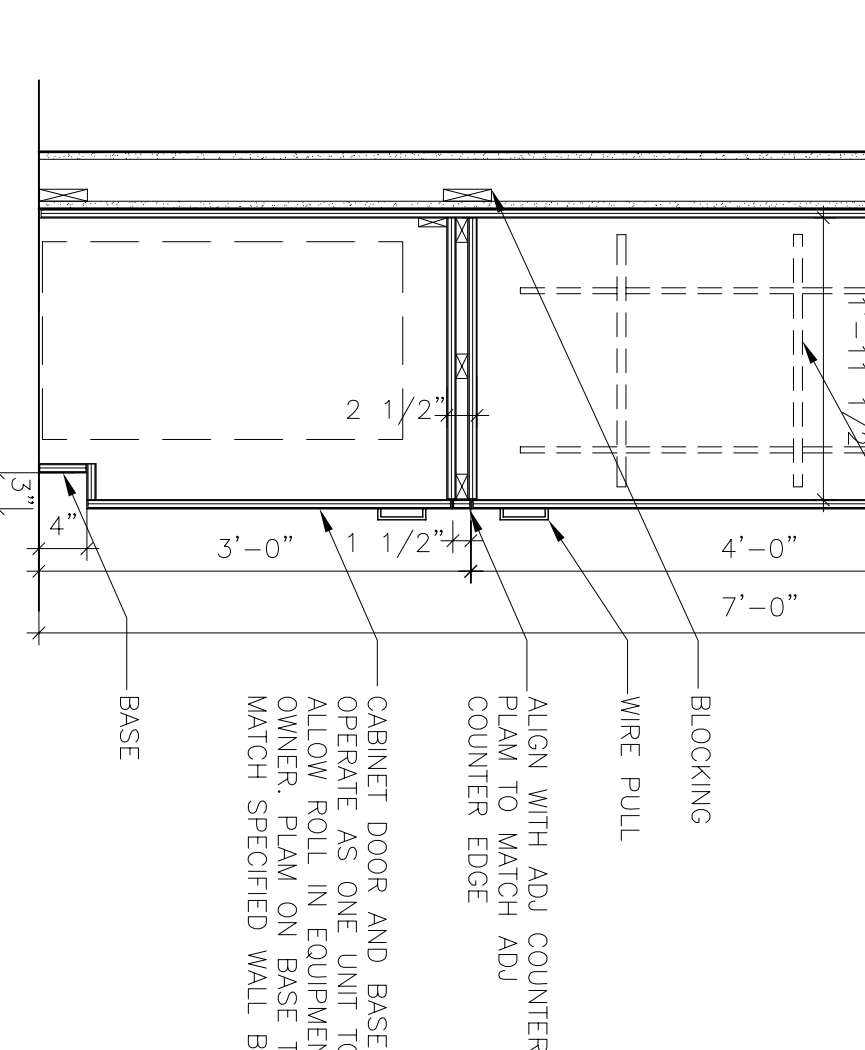
14 SECTION TYPE Z  
 SCALE: 3/4"=1'-0"



15 SECTION TYPE DESK  
 SCALE: 3/4"=1'-0"



16 SECTION TYPES AA/BB  
 SCALE: 3/4"=1'-0"



17 SECTION TYPE CC  
 SCALE: 3/4"=1'-0"