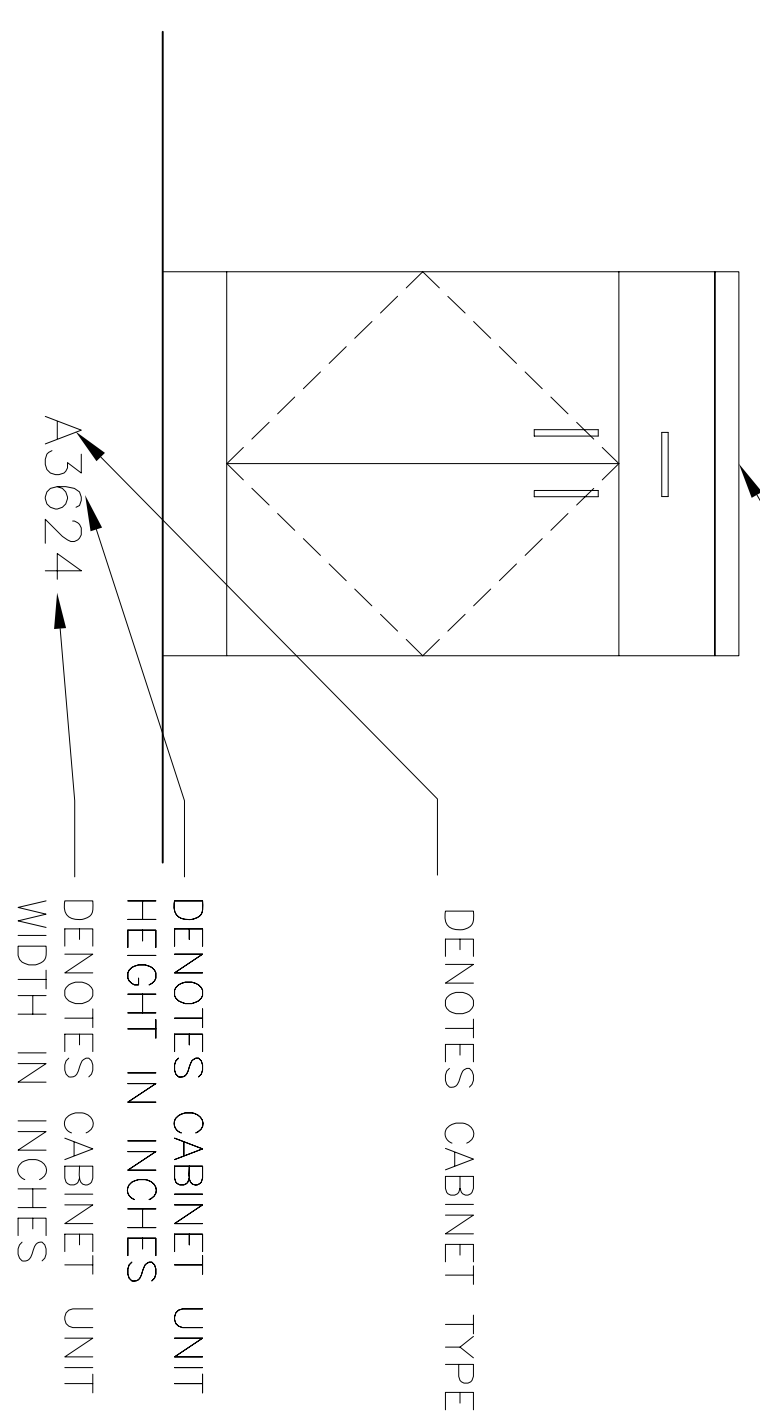
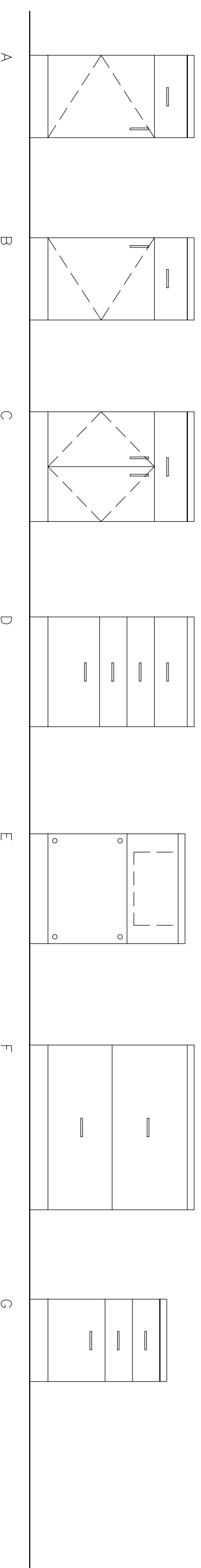


**CABINET CODE SYSTEM**

COUNTERTOP, SEE GENERAL NOTES

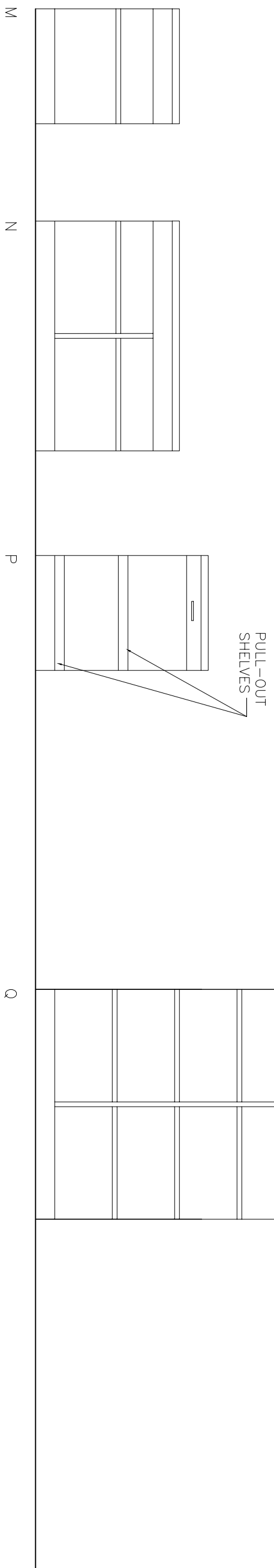


**BASE CABINETS**

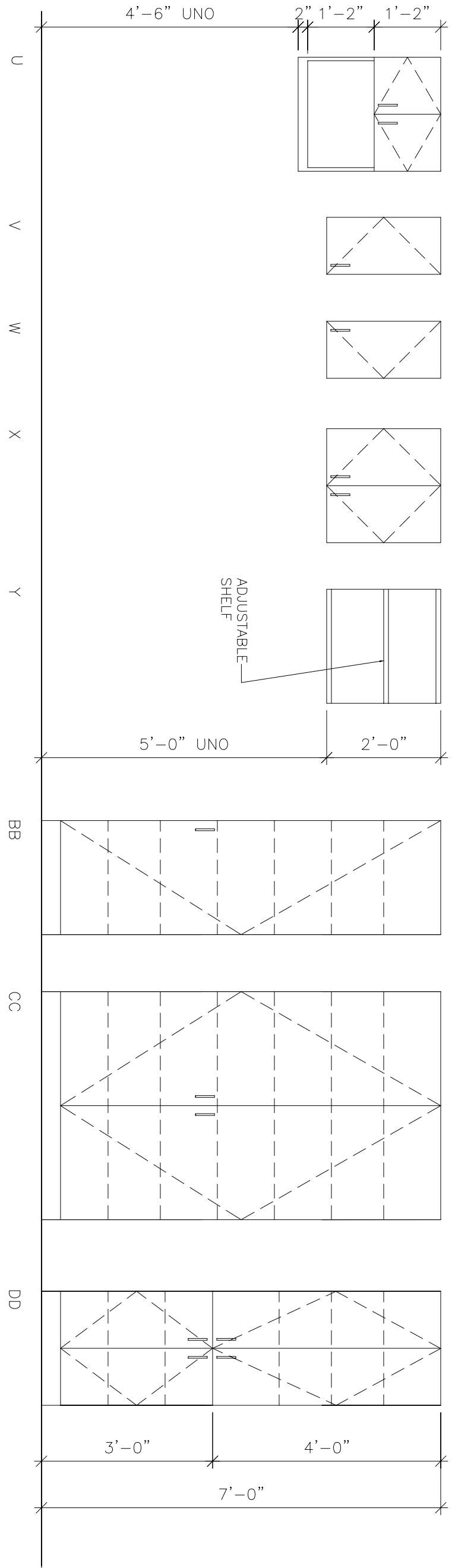


**OPEN SHELVING**

NOTE: ALL SHELVES TO BE ADJUSTABLE (TYPES P-S).  
TYPE P IS PULL-OUT SHELVING ON DRAWER SLIDES.  
TYPE Q IS ADJUSTABLE SHELVING.



**WALL CABINETS AND TALL STORAGE**



FIRE TREATED WD. BLOCKING (TYP.) - REINFORCE WALL AS REQUIRED TO SUPPORT CABINET

1/2" REVEAL - PLAM SCRIBE

3/4" PLYWOOD ADJ. SHELF  
SEE CASEWORK NOTES.

CABINET DOORS - 3/4" PLYWOOD W/PLAM FINISH - ALL EXPOSED SURFACES.  
SEE CASEWORK NOTES.

WIRE PULL (TYP.)

U.C. LIGHT (TYP.)

P. LAM. BACK SPLASH & COUNTERTOP SEE ELEV. FOR P. LAM. COLOR

WIRE PULL  
ADJUSTABLE BRACKETS SEE  
P.LAM. SEE ELEV. FOR SPECIFIC COLOR  
VINYL BASE

1 TYP. CASEWORK SECTION  
1 1/2"=1'-0"

**GENERAL NOTES:**

- PENCIL DRAWERS WHERE SHOWN SHALL BE 3" IN HEIGHT AND A MAXIMUM WIDTH OF 24". ALL PENCIL DRAWERS TO BE REMOVABLE.
- CABINET UNIT DEPTHS TO BE AS FOLLOWS, UNON ON DETAILS. (EXCLUDING DOORS)  
BASE CABINETS: 2'-0"  
TALL STORAGE CABINETS: 2'-0"
- TYPICAL TOPSPACE AT FLOOR MOUNTED CABINETS:  
DEPTH: 3" HEIGHT: 4"
- END PANELS AT KNEE SPACES, END RINGS OR UNDER-COUNTER EQUIPMENT TO BE 3" W. CONSTRUCTED OF 2" X 2" W/ 3/4" PLYWOOD LAMINATE EACH SIDE.
- CABINETS TO BE PROVIDED WITH ADJUSTABLE SHELVES AS FOLLOWS, UNON:  
BASE CABINETS: 5 SHELVES  
TALL STORAGE: 5 SHELVES  
WALL CABINETS: 2 SHELVES (LESS THAN 24" HIGH)  
WALL CABINETS: 1 SHELF
- TYPICAL COUNTERTOP TO BE PLASTIC LAMINATE FINISH, UNON DEPTH TO BE 25" WITH A 4" HIGH BACKSPLASH, UNON PROVIDE A BACKSPLASH AT ENDS OF COUNTERTOPS WHERE ADJACENT TO A WALL OR PARTIAL BACKSPLASH AT PARTIAL WALL WHERE APPLICABLE.
- ALL DRAWERS IN BASE CABINETS TO BE 6" IN HEIGHT UNLESS OTHERWISE NOTED.
- AT KNEE SPACES, COUNTERTOP SHALL BE PROVIDED WITH A PLASTIC LAMINATE APRON WHEREVER PENCIL DRAWERS DO NOT OCCUR. HEIGHT OF APRON TO COORDINATE WITH ELEVATION. ALL APRONS TO BE REMOVABLE.
- TOP OF WALL CABINETS TO BE MOUNTED AT 7'-2" AFF UNLESS OTHERWISE SHOWN. TALL STORAGE UNITS TO BE 7'-2" TALL UNLESS OTHERWISE NOTED.
- WALL CABINET BULKHEADS TO BE OF GMB/STUD CONSTRUCTION UNLESS OTHERWISE NOTED.
- CUSTOM MILLWORK TO BE AS DIMENSIONED AS INDICATED ON SPECIFIC ELEVATIONS.
- PROVIDE A WALL STOP WHEREVER A TALL STORAGE UNIT DOOR PULL ABUTS AN ADJACENT OMB FINISH WHEN OPENED.
- PROVIDE U.C. LIGHT AT ALL WALL CABINETS, TYPICAL.

CORNER BEAD  
CAULK

2 TYP. CABINET BASE  
3"=1'-0"

3 TYP. UPPER CABINET  
3"=1'-0"

4 TYP. COUNTERTOP  
3"=1'-0"

5 TYP. UPPER CABINET  
3"=1'-0"

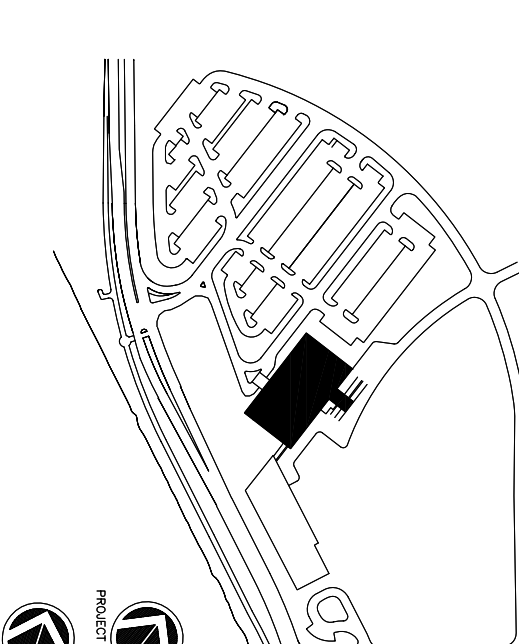
6 TYP. COUNTERTOP  
3"=1'-0"

8 TYP. UPPER CABINET  
3"=1'-0"

WRAP FASCIA @ END CABINET LOCATION

10 TYP. UPPER CABINET  
3"=1'-0"

SEE ELECTRICAL



Consultant  
Civil Engineer  
Delucor-Hoffman Associates, Inc.  
726 Main Street, Suite 816  
Foley, Tennessee 37075  
Phone (207) 775-1121  
Fax (207) 879-0898

Consultant  
ASSOCIATE ARCHITECT/STRUCTURAL ENGINEER  
SMART Associates, Inc.  
P.O. Box 100  
Portland, Maine 04104  
Phone (207) 772-3846  
Fax (207) 772-1070

Consultant  
MECHANICAL/ELECTRICAL ENGINEER  
Bord, Koon + Aronson Consulting Engineers, LLC  
1111 Main Street, Suite 200  
311 Arsenal Street  
Portland, Maine 04102-5289  
Phone (207) 754-0017  
Fax (207) 754-0017

Consultant  
EQUIPMENT PLANNING  
Muller, Inc.  
1893 General George Patton Drive  
Franklin, Tennessee 37067  
Phone (615) 376-3114  
Fax (615) 376-3114

Consultant  
CONSTRUCTION MANAGER  
W. J. Johnson Construction, Inc.  
7 Johnson Way  
7 Johnson Way  
Portland, Maine 04103  
Phone (401) 456-8906  
Fax (401) 456-5516

Consultant  
Interior Finish  
Hogan Finishes, LLC  
1808 West End Ave. Suite 1400  
Portland, Maine 04102  
Phone (615) 321-5591  
Fax (615) 321-5689

Date  
11/10/06 FINAL - ISSUE FOR BID  
Drawn By  
MAF/JLL/CLB/CLJ  
Scale  
AS NOTED

**Francis**

**Caufman**

**Foley**

**Hoffmann**

Project File  
Francis, Caulman  
Foley, Hoffmann  
Architects Ltd.  
3120 Ash Street  
Philadelphia, PA 19103  
215-568-8250

Mercy Health Core  
System of Maine  
FORE RIVER SHORT  
STAY HOSPITAL

**MERCY**

Project Number  
F05-4898  
Drawing Title and Number  
Casework Schedule  
**A6.07**