

Consultant:
 CIVIL ENGINEER Associates, Inc.
 778 Main Street, Suite 8
 South Portland, ME 04106
 Phone: (207) 771-1121
 Fax: (207) 879-0896

Consultant:
 ASSOCIATE ARCHITECT/STRUCTURAL ENGINEER
 144 Fore Street P.O. Box 618
 South Portland, ME 04106
 Phone: (207) 772-3546
 Fax: (207) 772-1070

Consultant:
 MECHANICAL/ELECTRICAL ENGINEER
 Bird, Rod + Altonas Consulting Engineers, LLC
 The Arsenal on the Charles
 Watertown, MA 02472-5789
 Phone: (617) 924-5116
 Fax: 617.924.5139

Consultant:
 EQUIPMENT PLANNING
 Gung Burtson & Associates
 1000 Main Street, Suite 200
 Franklin, Tennessee 37067
 Phone: (615) 376-3100
 Fax: (615) 376-3114

Consultant:
 CONSTRUCTION MANAGER
 Globe Building Company
 1000 Main Street, Suite 200
 Providence, Rhode Island 02903
 Phone: (401) 266-5185
 Fax: (401) 266-5116

Consultant:
 FOOD SERVICE
 Food Service Associates, LLC
 1808 West End Ave, Suite 1400
 Nashville, TN 37203-5591
 Phone: (615) 227-4222
 Fax: (615) 221-5889

It is the responsibility of the construction Sub-Contractors to verify all dimensions and locate before proceeding with any work.

Date: 11/10/06
 Drawn By: Friel-Island For Construction
 AR/ KD

AS NOTED
 Scale:
 Francis

Francis

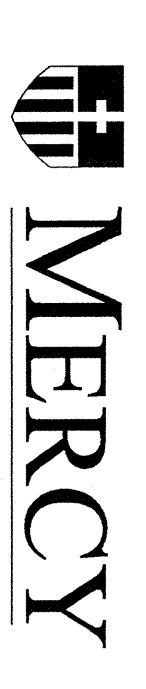
Caufman

Foley

Hoffmann

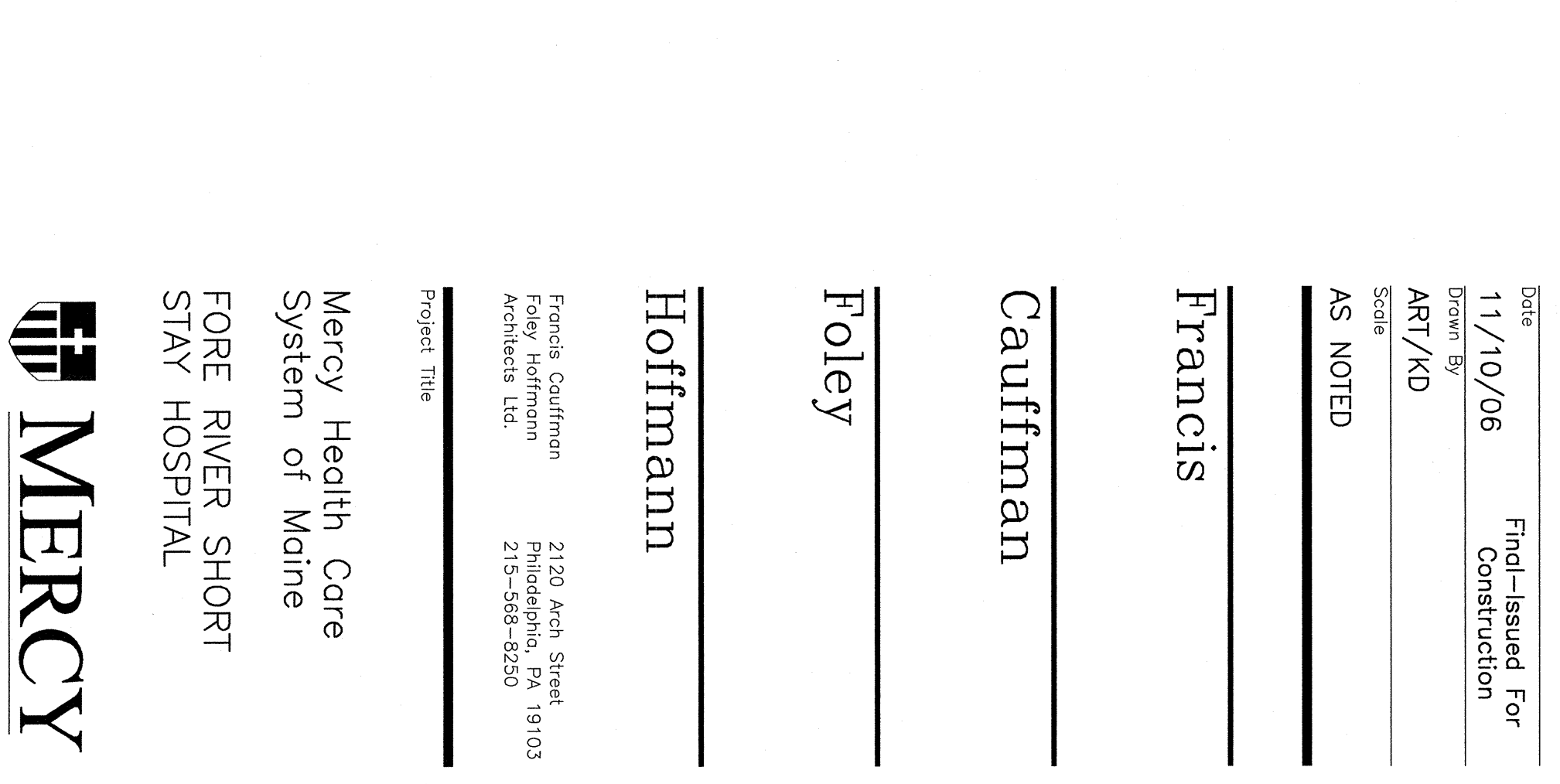
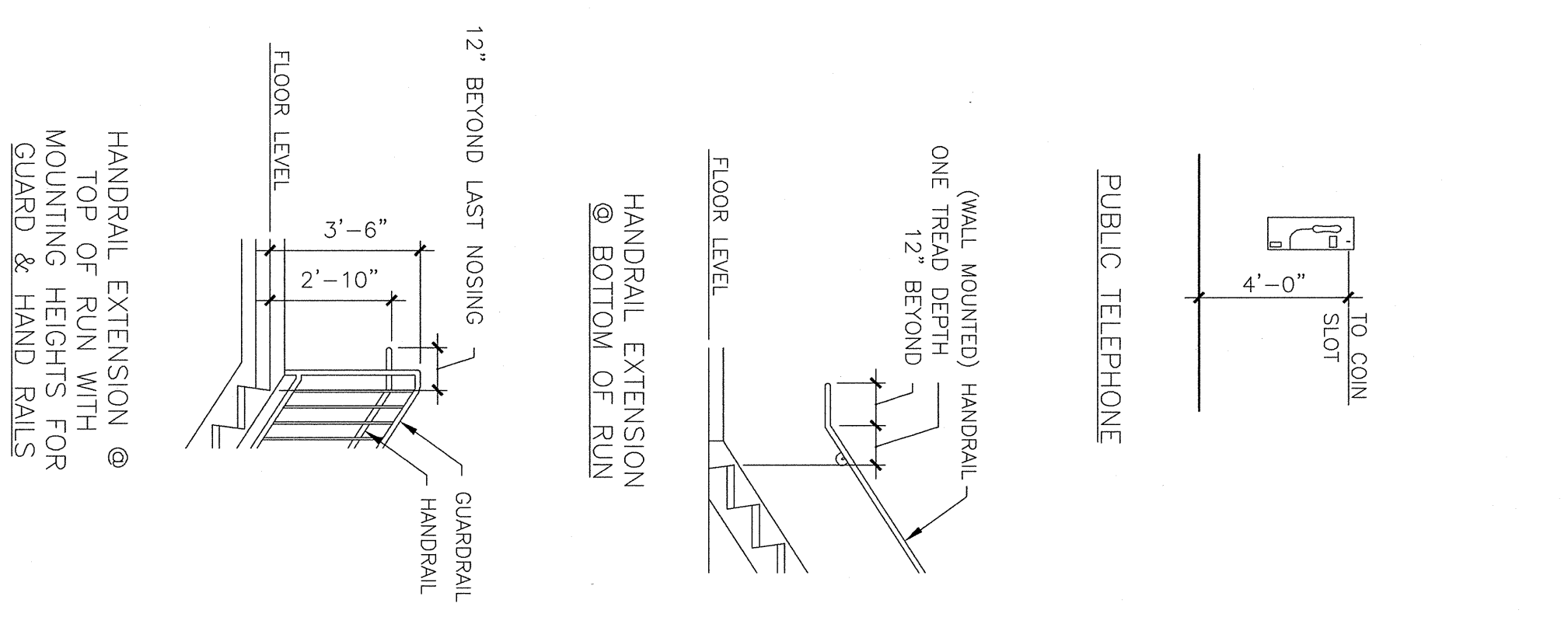
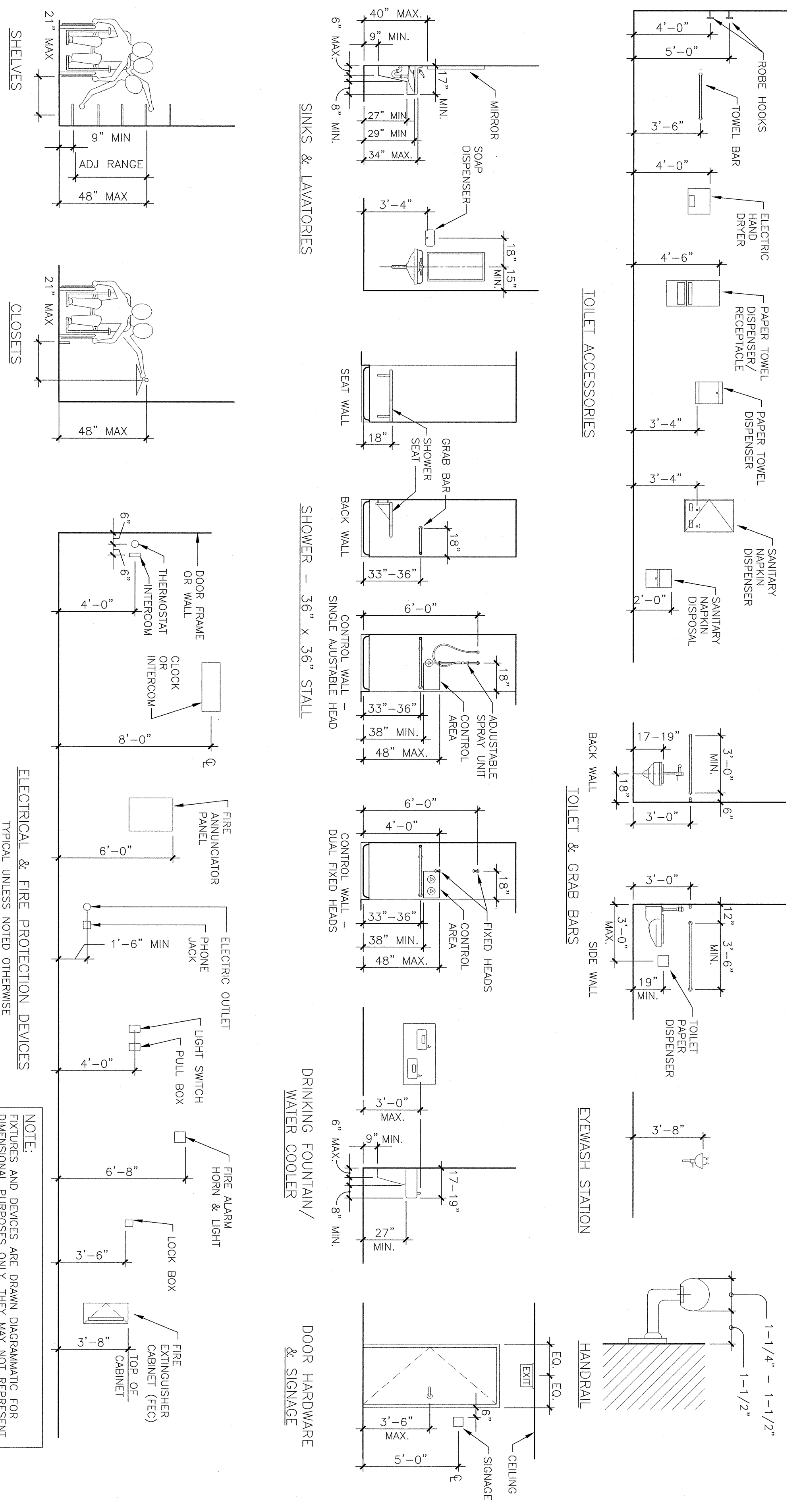
Francis Cauffman
 Architects Ltd.
 2120 Acot Street
 Portland, ME 04103
 Phone: (207) 772-3546
 Fax: (207) 772-1070

Project Title:
 Mercy Health Care
 System of Maine
 FORE RIVER SHORT
 STAY HOSPITAL



Product Number:
 KRISTAL DANFORTH
 No. 2788
 12/27/04
 Project Number:
 FO3-4989
 Drawing Title and Number:
 Typical Mounting Heights
 8 Nov 08

A6.06



1 TYPICAL MOUNTING HEIGHTS
 A6.06