

Consultant  
**DRYDEN**  
 DRUMMOND  
 DELUCCHI-HOFFMAN Associates, Inc.  
 726 Robinson Street, Suite 816  
 Philadelphia, PA 19103  
 Phone: (207) 775-1121  
 Fax: (207) 879-0898

Consultant  
**SMART**  
 ASSOCIATE ARCHITECT/STRUCTURAL ENGINEER  
 SMART One Street P.O. Box 818  
 Portland, Maine 04104  
 Phone: (207) 772-3848  
 Fax: (207) 772-1070

Consultant  
**MECHANICAL/ELECTRICAL ENGINEER**  
 Bond, Hood + Aronson Consulting Engineers, LLC  
 311 Arsenal Street, Suite 200  
 Portland, ME 04102  
 Phone: (207) 754-0017  
 Fax: (207) 754-0019

Consultant  
**EQUIPMENT PLANNING**  
 Equipment Planning Associates  
 1893 General George Patton Drive  
 Franklin, Tennessee 37067  
 Phone: (615) 276-3140  
 Fax: (615) 276-3114

Consultant  
**CONSTRUCTION MANAGER**  
 Johnson, Wilsey/  
 Providence  
 7 Johnson Wilsey/  
 Providence  
 Providence, RI 02903  
 Phone: (401) 456-8908  
 Fax: (401) 456-5516

Consultant  
**Interior**  
 Interior Foundation, LLC  
 1808 West End Ave. Suite 1400  
 Nashville, TN 37203  
 Phone: (615) 321-5591  
 Fax: (615) 321-5689

The responsibility of the Construction Manager/General Contractor and all other trades shall be to verify and accept conditions of prior work by review and to be noted before proceeding with any work.

Date: 11/10/06 FINAL - ISSUE FOR BID

Drawn By: MAF/JUL/CLB/CLM

Scale: AS NOTED

**Francis**

**Caufman**

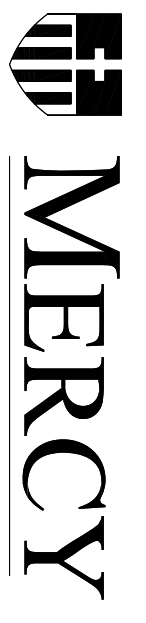
**Foley**

**Hoffmann**

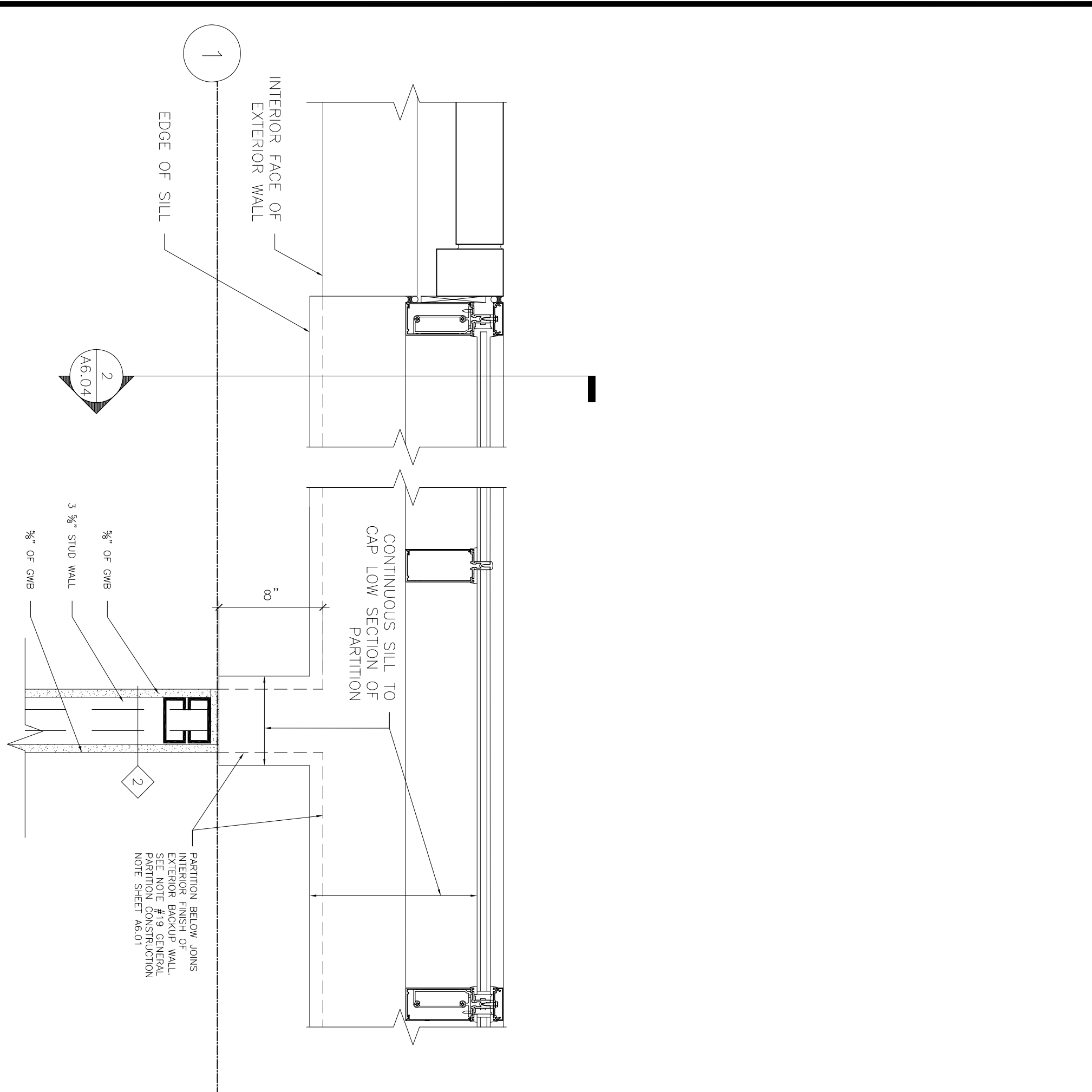
Project: Mercy Health Core System of Maine FORE RIVER SHORT STAY HOSPITAL

Project File: 2120 Arkh Street Philadelphia, PA 19103

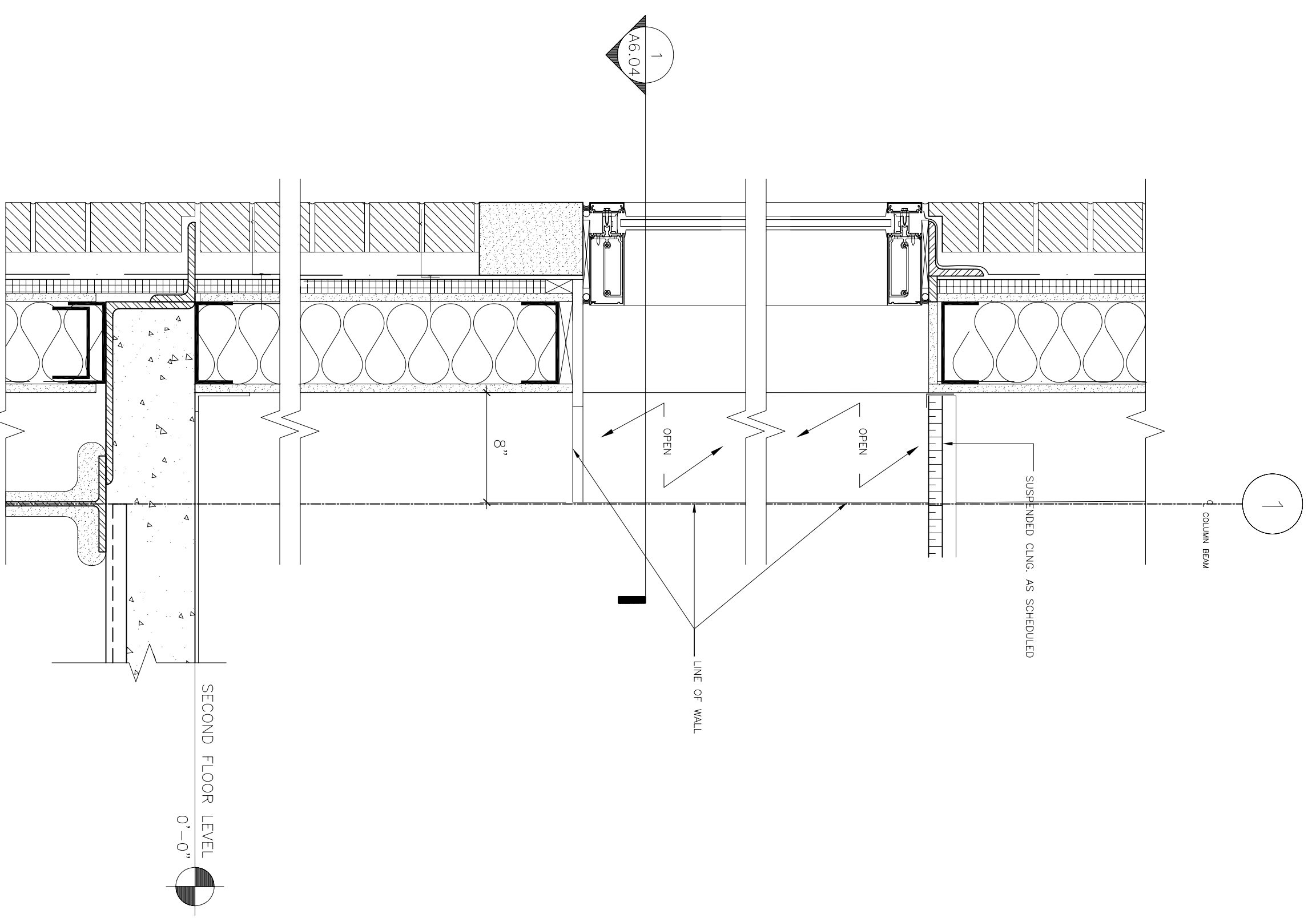
Project File: 2120 Arkh Street Philadelphia, PA 19103  
 Architects Ltd. 215-568-8250



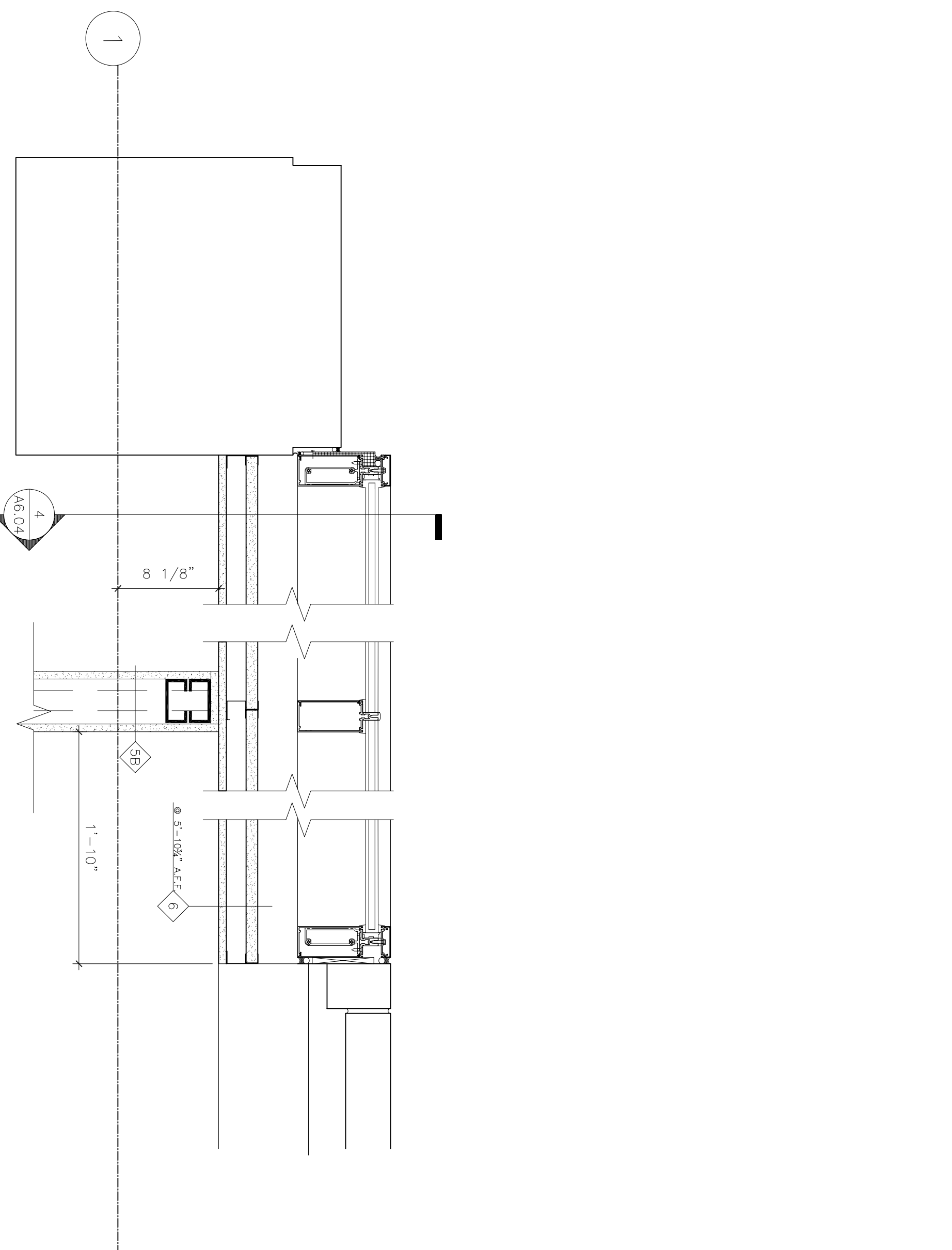
Project Number: F05-4898  
 Drawing Title: MISC DETAILS



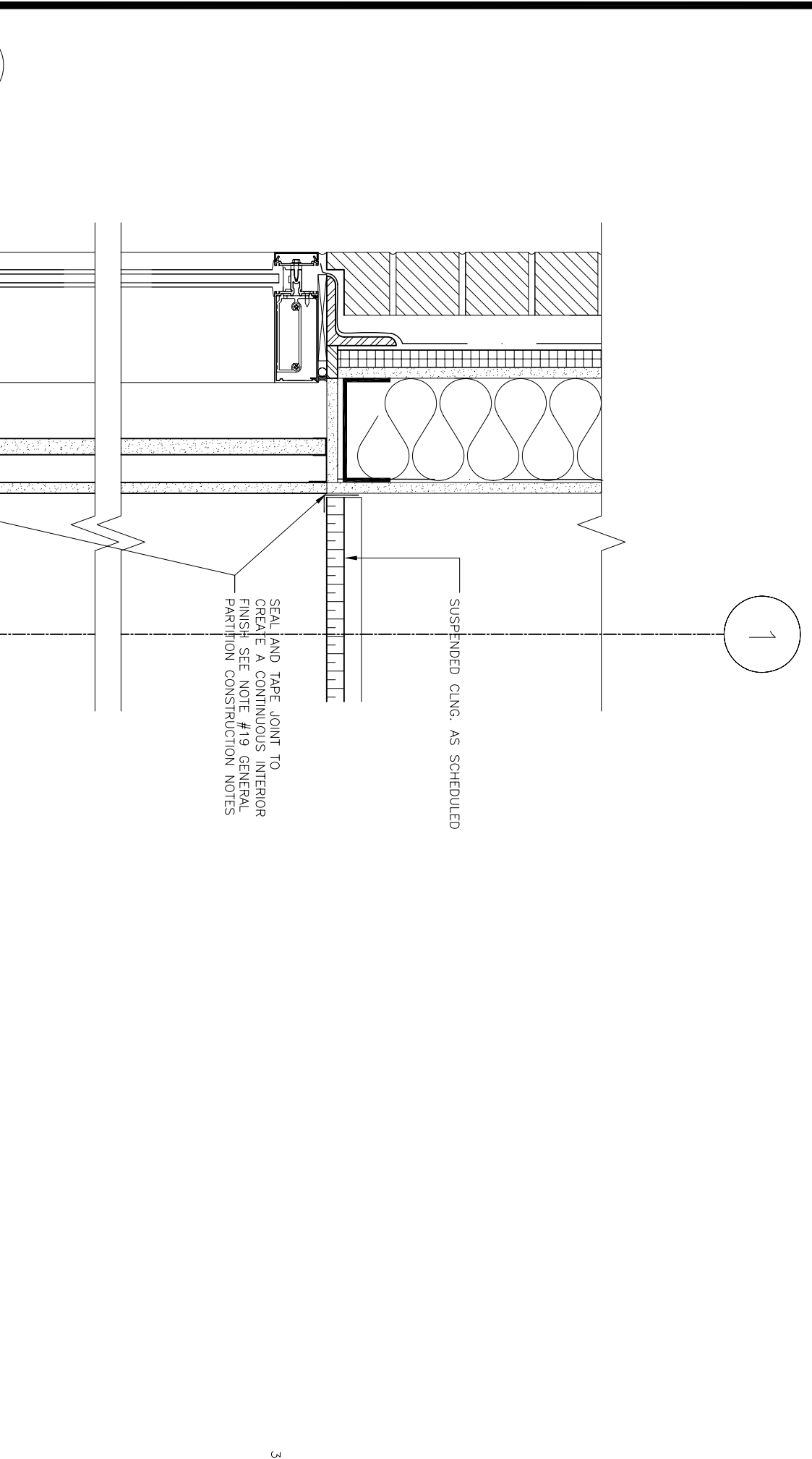
1 PLAN DETAIL - INT. PARTITION @ EXT. WALL  
 SCALE: 1/2"=1'-0"



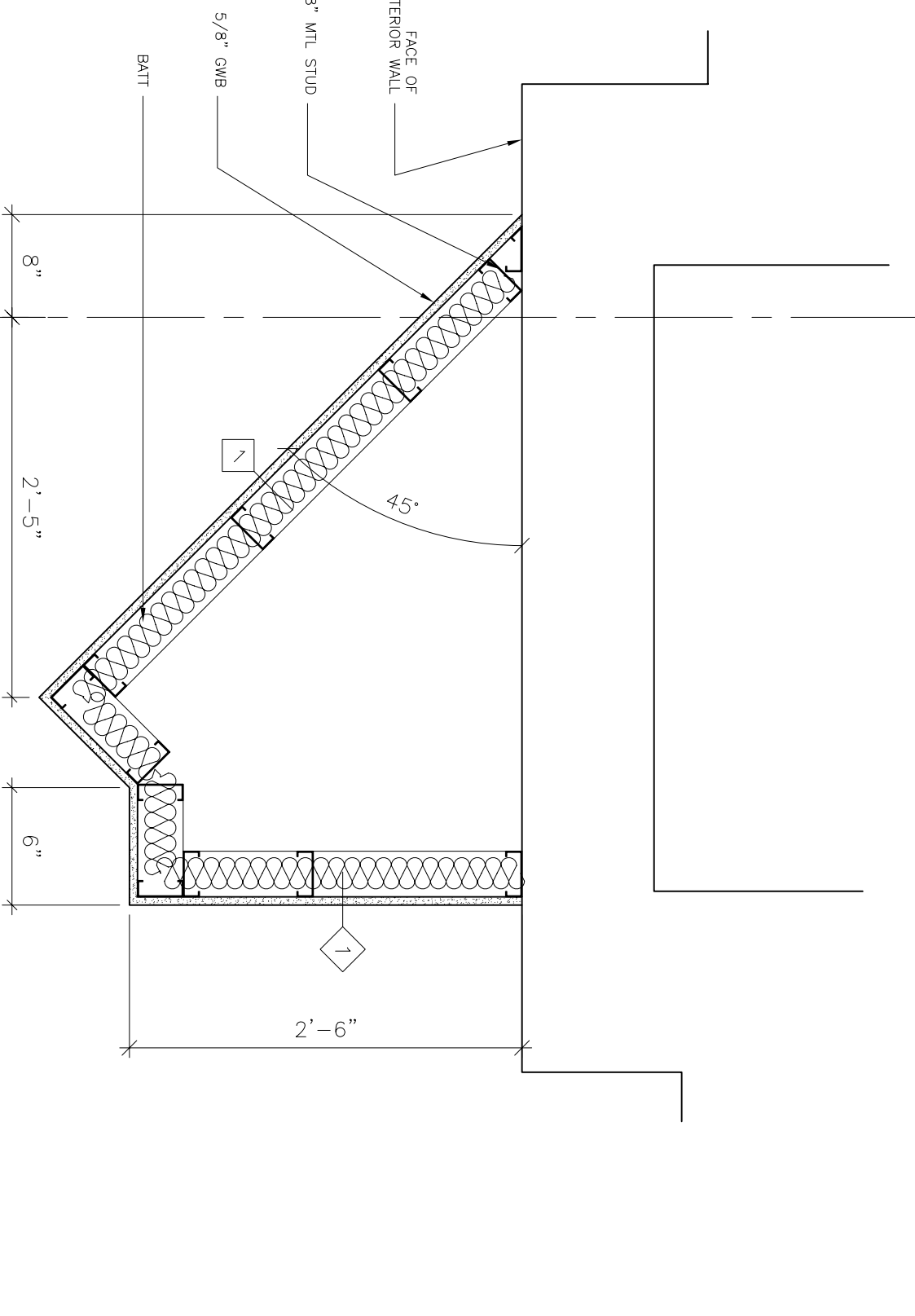
2 SECTION DETAIL  
 SCALE: 1/2"=1'-0"



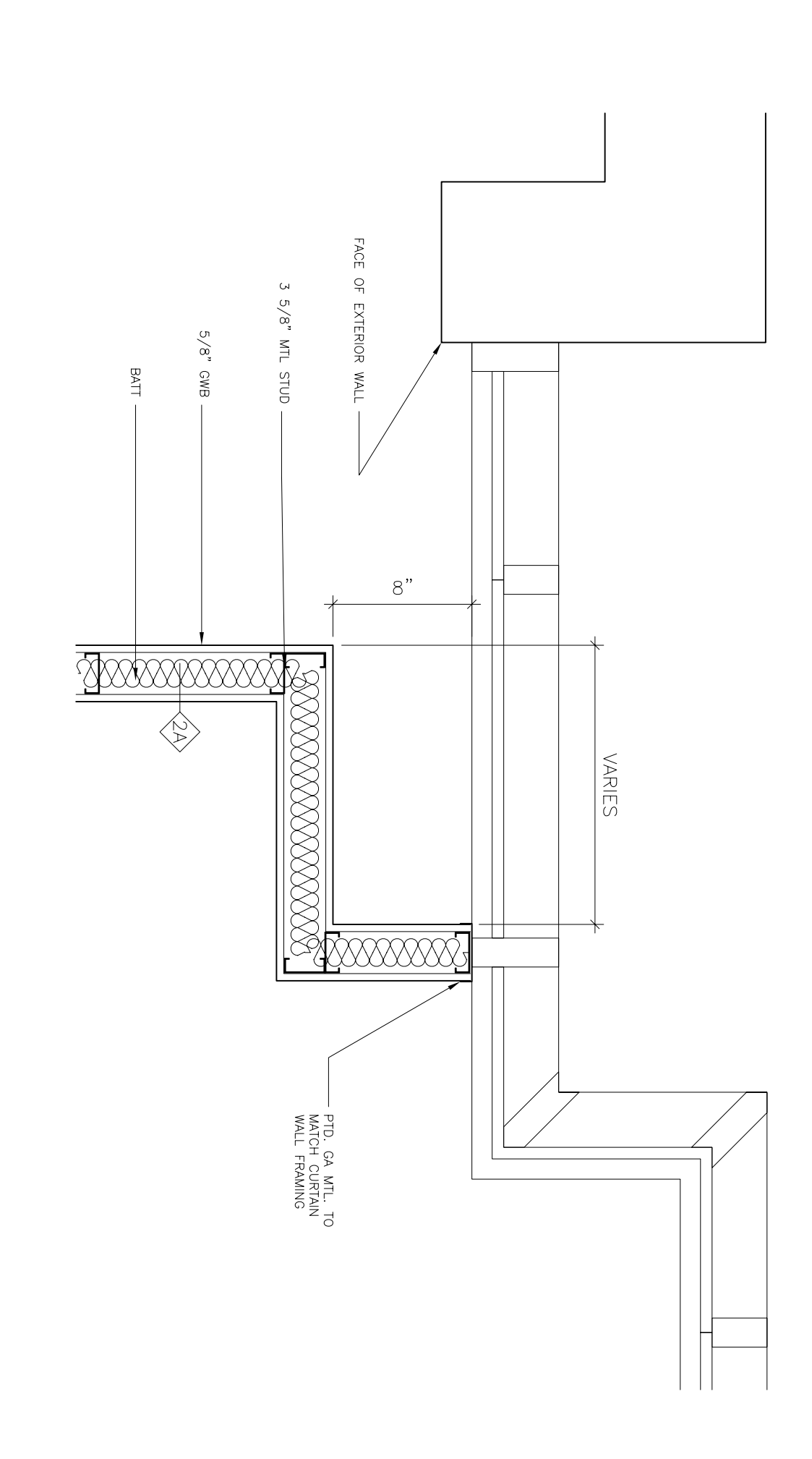
3 PLAN DETAIL @ SUBSTRATE  
 SCALE: 1/2"=1'-0"



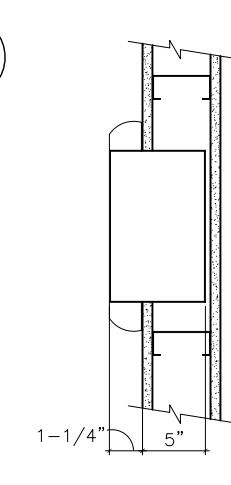
4 SECTION DETAIL  
 SCALE: 1/2"=1'-0"



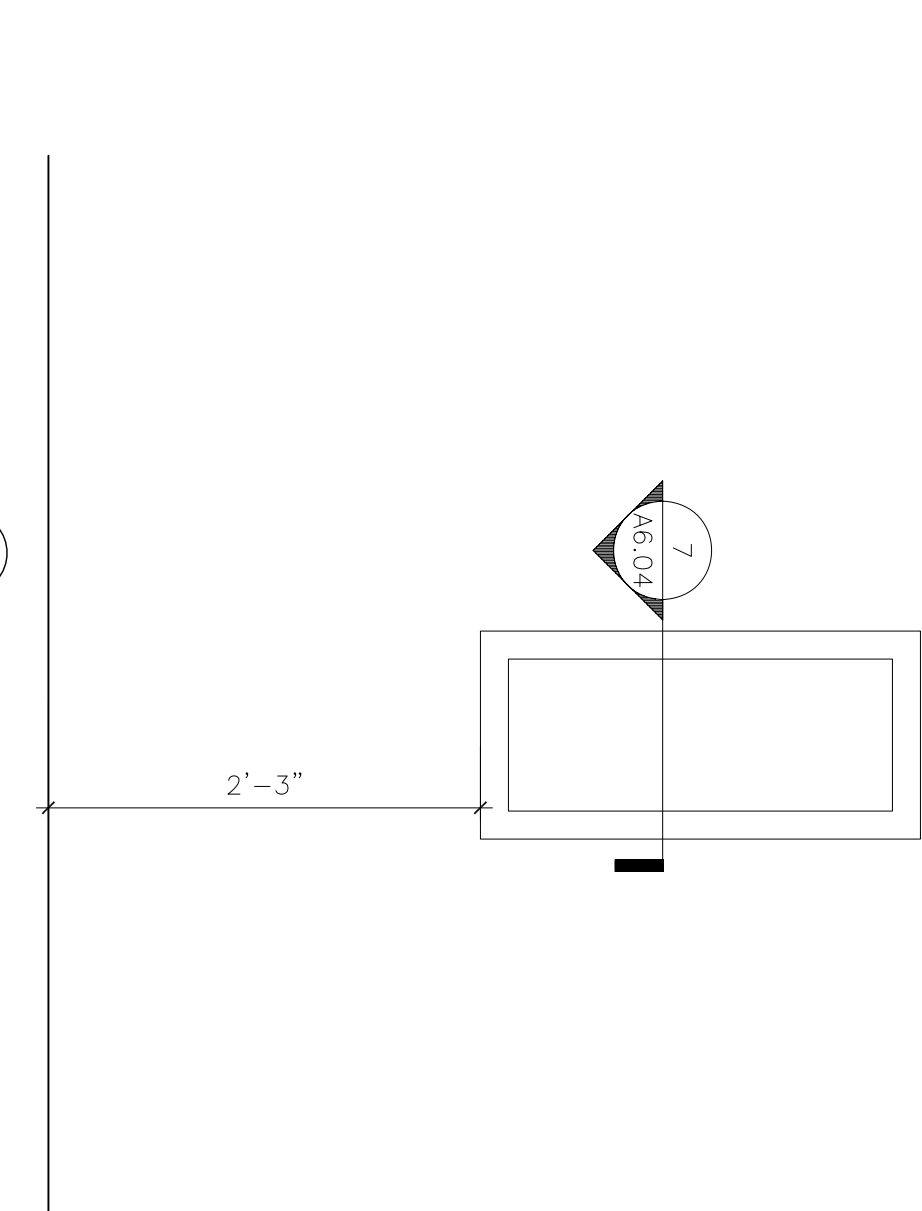
5 WALL DETAIL @ PERIMETER  
 SCALE: 1/2"=1'-0"



6 WALL DETAIL @ PERIMETER  
 SCALE: 1/2"=1'-0"



7 FIRE EXTINGUISHER CABINET - PLAN  
 SCALE: 1/2"=1'-0"



8 FIRE EXTINGUISHER CABINET ELEVATION  
 SCALE: 1/2"=1'-0"