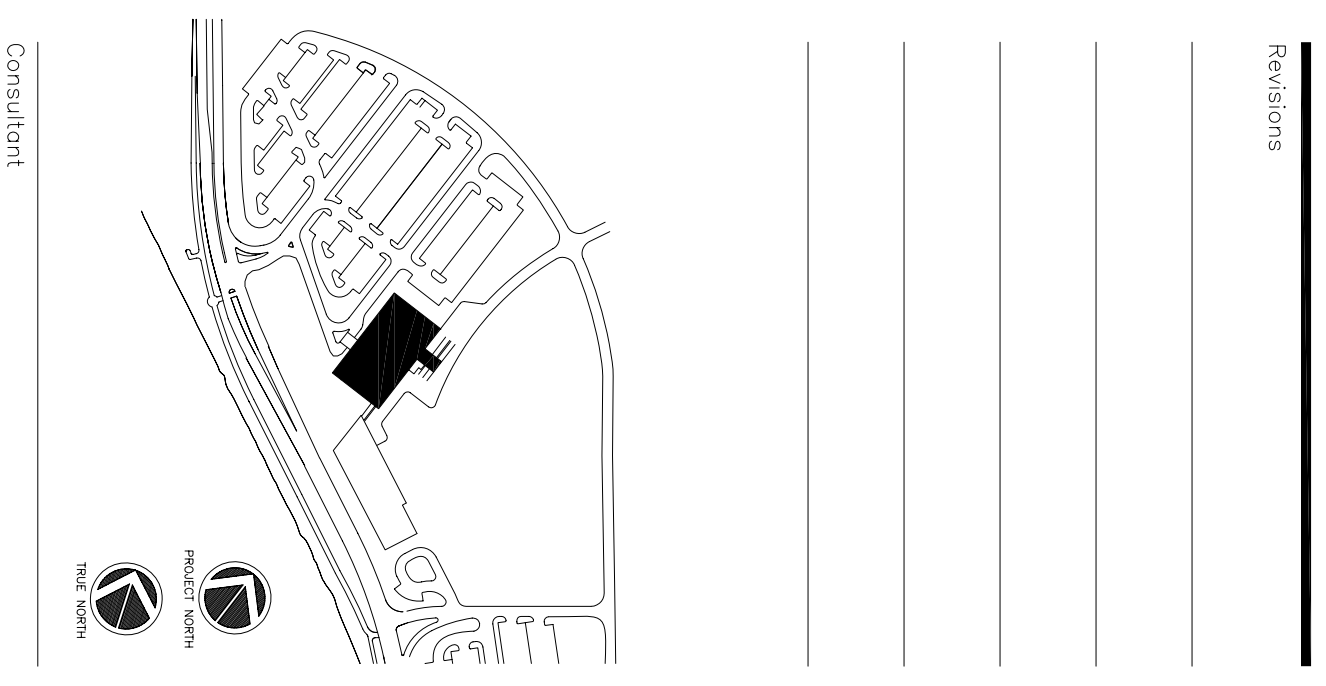


GENERAL NOTES

1. SEE SPECIFICATION SECTION 08000 FOR DOOR AND WINDOW SCHEDULE.



Consultant:
 CH2M HILL
 276 Main Street, Suite 816
 Philadelphia, PA 19103
 Phone: (207) 775-1211
 Fax: (207) 879-0988

Consultant:
 ASSOCIATE ARCHITECT/STRUCTURAL ENGINEER
 SMART Engineering Group, P.C. Box 818
 Portland, Maine 04104
 Phone: (207) 772-5846
 Fax: (207) 772-1070

Consultant:
 MECHANICAL/ELECTRICAL ENGINEER
 Bond, Ross + Arbones Consulting Engineers, LLC
 311 Arsenal Street
 Portland, ME 04102-5789
 Phone: (207) 724-0012
 Fax: 617-924-9339

Consultant:
 EQUIPMENT PLANNING
 1893 General George Patton Drive
 Franklin, Tennessee 37067
 Phone: (615) 456-8906
 Fax: (615) 376-3114

Consultant:
 CONSTRUCTION MANAGER
 7 Johnson Walkway
 Providence, Rhode Island 02903
 Phone: (401) 456-8906
 Fax: (401) 456-5516

Contractor:
 Innon Enterprises, LLC
 1808 West End Ave. Suite 1400
 Philadelphia, PA 19103
 Phone: (615) 321-5591
 Fax: (615) 321-5589

Designer:
 MAF/JUL/CLB/CLJ

AS NOTED

Francis

Coffman

Foley

Hoffmann

Project File:
 Francis, Coffman
 2120 Arch Street
 Philadelphia, PA 19103
 Architects Ltd. 215-568-8250

Project Name:
 Mercy Health Core
 System of Maine
 FORE RIVER SHORT
 STAY HOSPITAL

MERCY

Project Number:
 F05-4898

Drawing Title:
 DOOR/GLAZING TYPES & DETAILS

A6.02