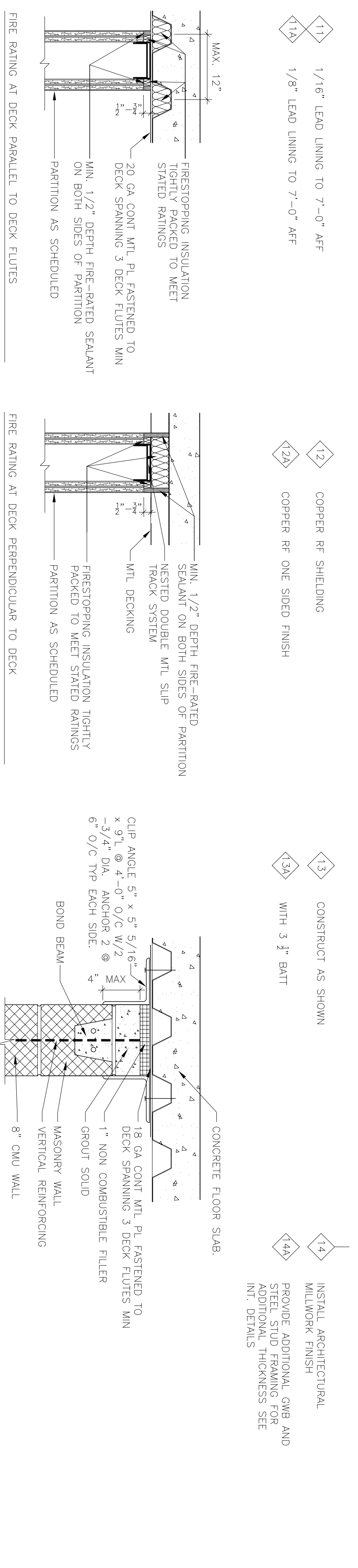
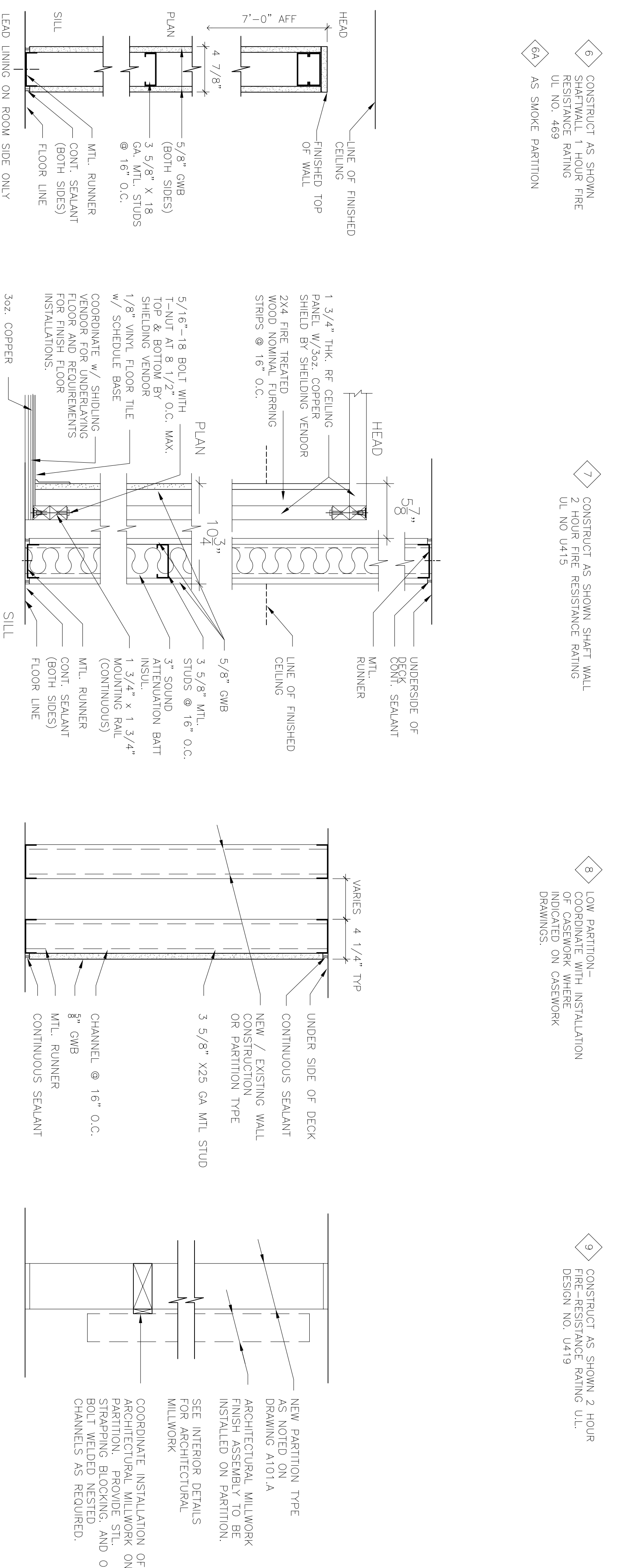
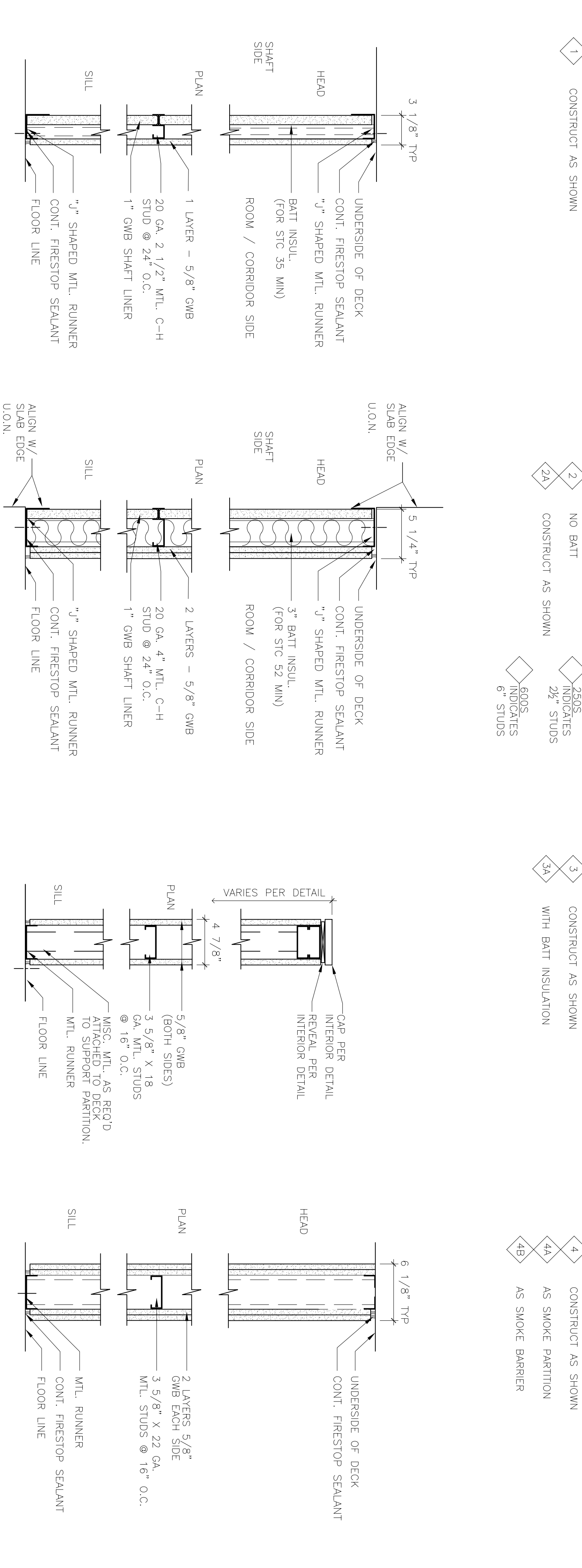
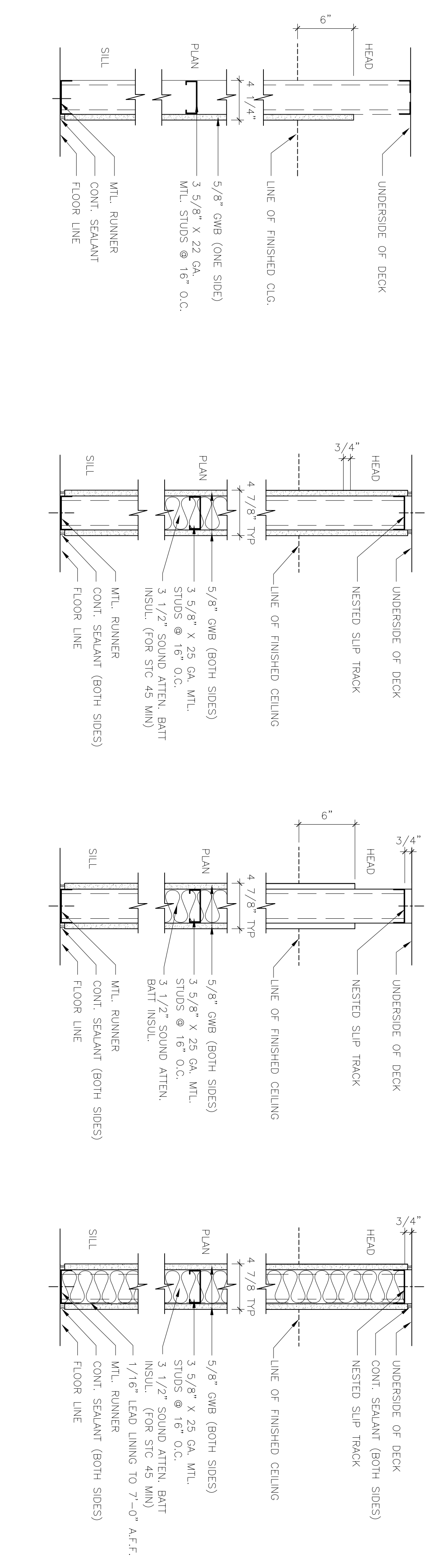
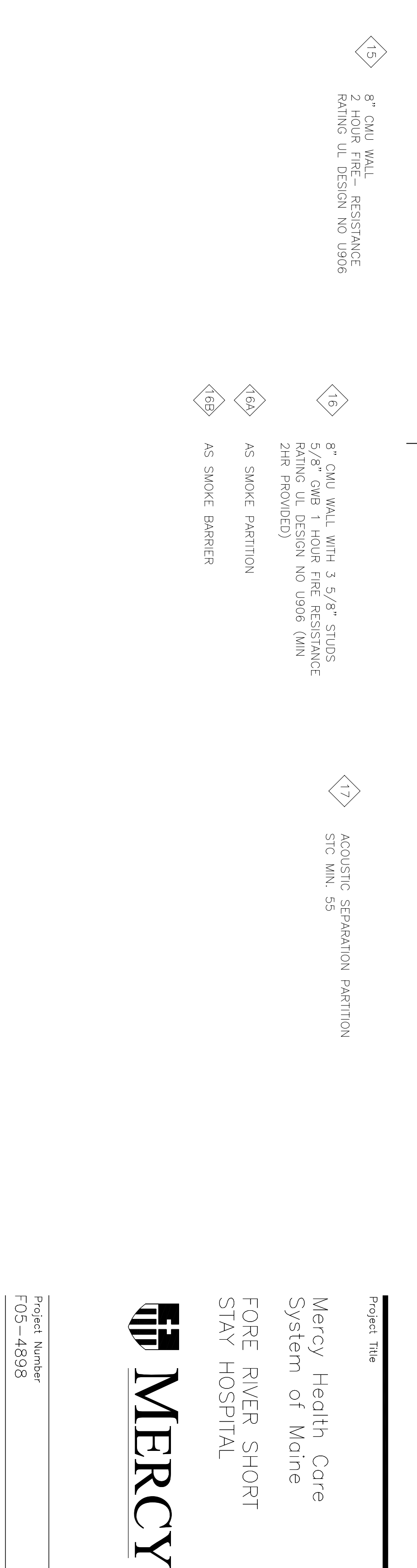
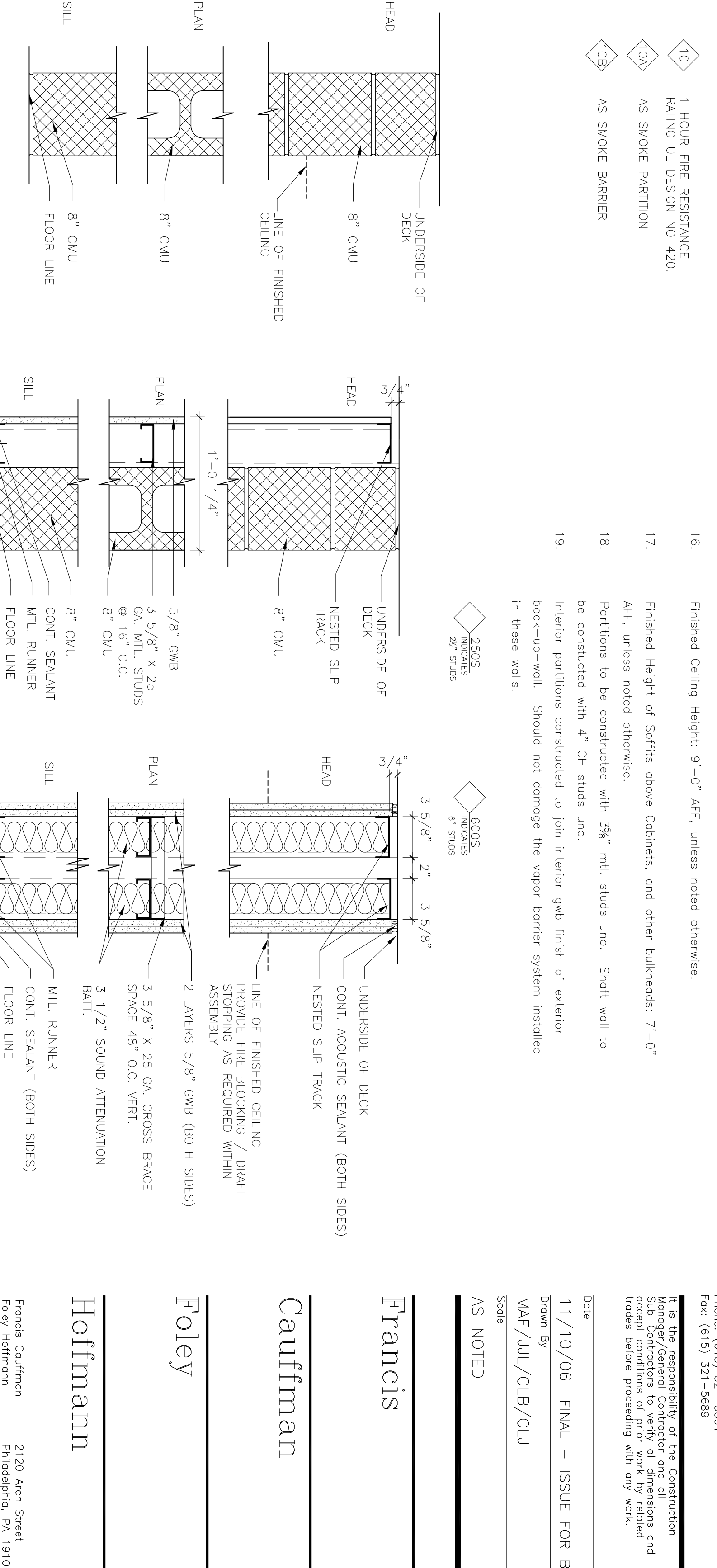
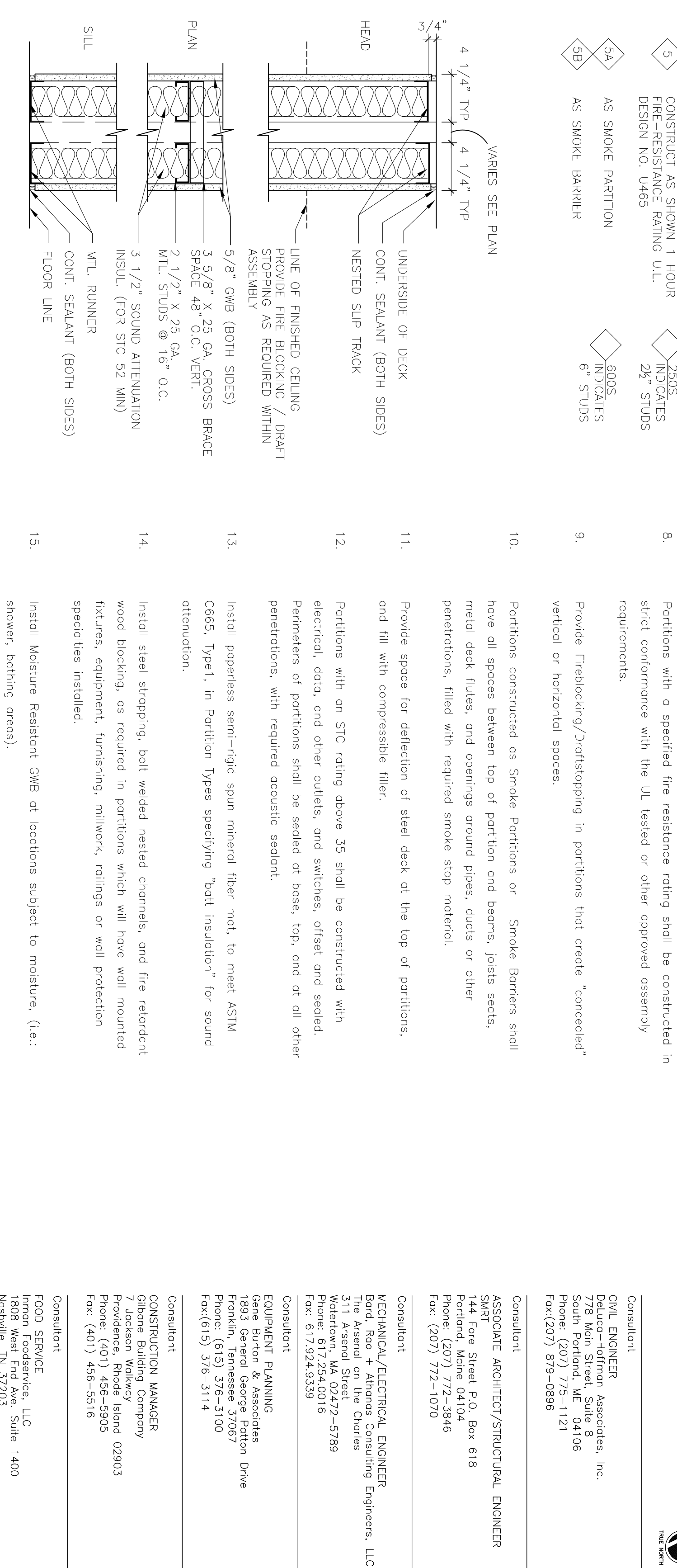


GENERAL PARTITION CONSTRUCTION NOTES:

1. Partitions shall be Type 2A unless noted otherwise.
2. Partition Types shown are general and do not represent every variation that may occur in the project.
3. Partition Types do not show lateral bracing or reinforcing that may be required for construction.
4. See Finish Schedule and Interior Elevation for finishes that will be applied to Partitions Types.
5. Partitions with metal studs shall be minimum gauge required for deflection of the partition, with finishes and partition mounted fixtures installed, not to exceed L/240 per ASTM C645.
6. Partitions shall be constructed full height to the floor or roof deck above, unless noted otherwise.
7. Partitions with a fire resistance rating shall be sealed at floor or roof deck with required fire stopping.
8. Partitions with a specified fire resistance rating shall be constructed in strict conformance with the UL tested or other approved assembly requirements.
9. Provide Fireblocking/Driftstopping in partitions that create "concealed" vertical or horizontal spaces.
10. Partitions constructed as Smoke Barriers or Smoke Barriers shall have all spaces between top of partition and beams, joists seats, metal deck flutes, and openings around pipes, ducts or other penetrations, filled with required smoke stop material.
11. Provide space for deflection of steel deck at the top of partitions, and fill with compressible filler.
12. Partitions with an STC rating above 35 shall be constructed with electrical, data, and other outlets, and switches, offset and sealed. Perimeters of partitions shall be sealed at base, top, and at all other penetrations, with required acoustic sealant.
13. Install paperless semi-rigid spun mineral fiber mat, to meet ASTM C665, Type 1, in Partition Types specifying "bat insulation" for sound attenuation.
14. Install steel strapping, bolt welded nested channels, and fire retardant wood blocking, as required in partitions which will have wall mounted fixtures, equipment, lampholding, milwork, railings or wall protection specialties installed.
15. Install Moisture Resistant GWB at locations subject to moisture, (i.e.: shower, bathing areas).
16. Finished Ceiling Height: 9'-0" AFF, unless noted otherwise.
17. Finished Height of Soffits above Cabinets, and other bulkheads: 7'-0" AFF, unless noted otherwise.
18. Partitions to be constructed with 2x4" mtl. studs unc. Soffit wall to be constructed with 4" CH studs unc.
19. Interior partitions constructed to join interior gable finish of exterior back-up-wall. Should not damage the vapor barrier system installed in these walls.



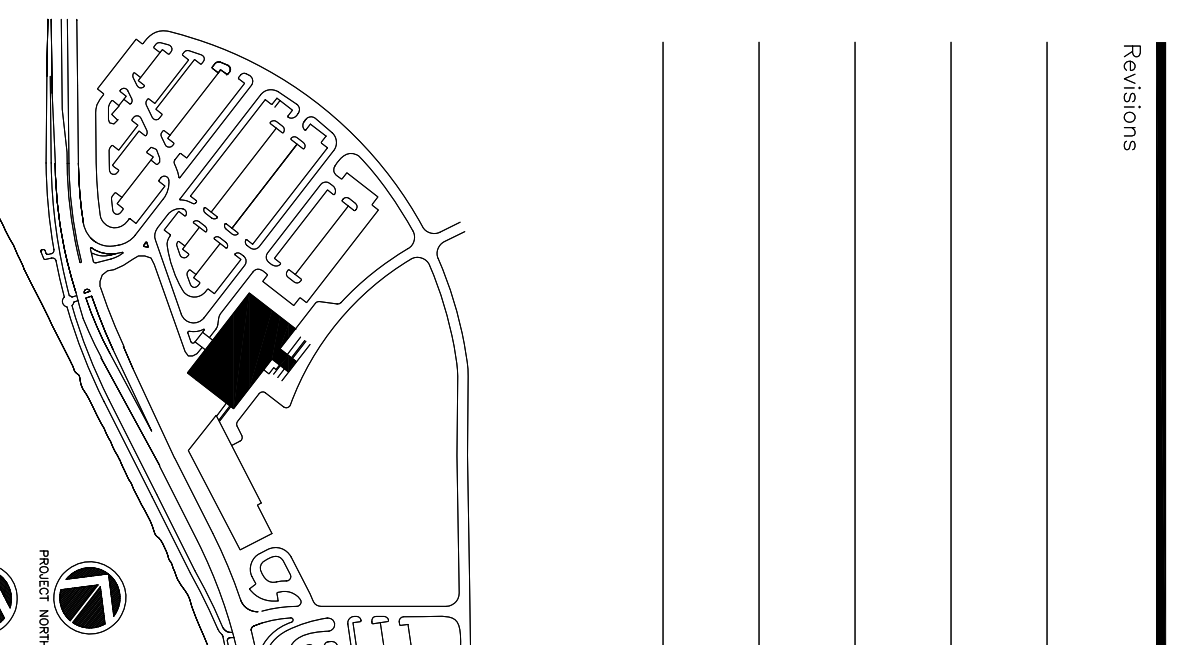
3 HEAD DETAIL TYPICAL CMU WALL BRACING



1 HEAD DETAIL

2 HEAD DETAIL

3 HEAD DETAIL TYPICAL CMU WALL BRACING



Consultant
 Project Engineer
 Project Architect/Structural Engineer
 2750 Rohn Street, Suite 816
 Philadelphia, PA 19103
 Phone: (207) 775-1121
 Fax: (207) 879-0898

Consultant
 Architect/Structural Engineer
 5800 New Street P.O. Box 818
 Philadelphia, PA 19104
 Phone: (207) 772-5846
 Fax: (207) 772-1070

Consultant
 MECHANICAL/ELECTRICAL ENGINEER
 6000 Rohn + Avenue Consulting Engineers, LLC
 311 Arsenal Street
 Philadelphia, PA 19106
 Phone: (215) 762-2889
 Fax: 617/242-9339

Consultant
 EQUIPMENT PLANNING
 1803 General George Patton Drive
 Franklin, Tennessee 37067
 Phone: (615) 371-1170
 Fax: (615) 371-3114

Consultant
 CONSTRUCTION MANAGER
 7 Johnson-Walshway
 Philadelphia, PA 19106
 Phone: (610) 456-8996
 Fax: (610) 456-5516

Consultant
 PROJECT ENGINEER
 1808 West End Ave, Suite 1400
 Philadelphia, PA 19103
 Phone: (610) 321-5591
 Fax: (610) 321-5689

Consultant
 PROJECT ENGINEER
 117/10/06 FINAL - ISSUE FOR BID
 Drawn By: MAF/JUL/CJL/CLJ
 Scale: AS NOTED

Francis
 Cauffman

Foley
 Hoffmann

Project Title
 Mercy Health Core
 System of Moore
 FORE RIVER SHORT
 STAY HOSPITAL



Project Number
 F05-4898
 Drawing the one Number
 PARTITION SCHEDULE
 A6.01