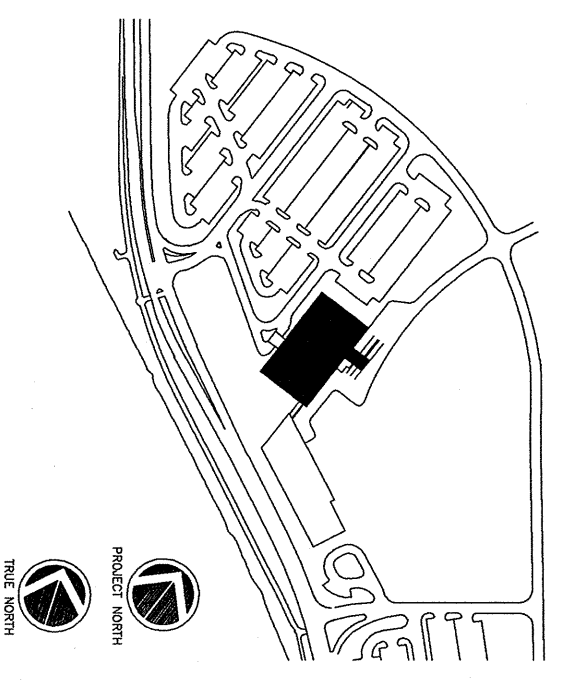
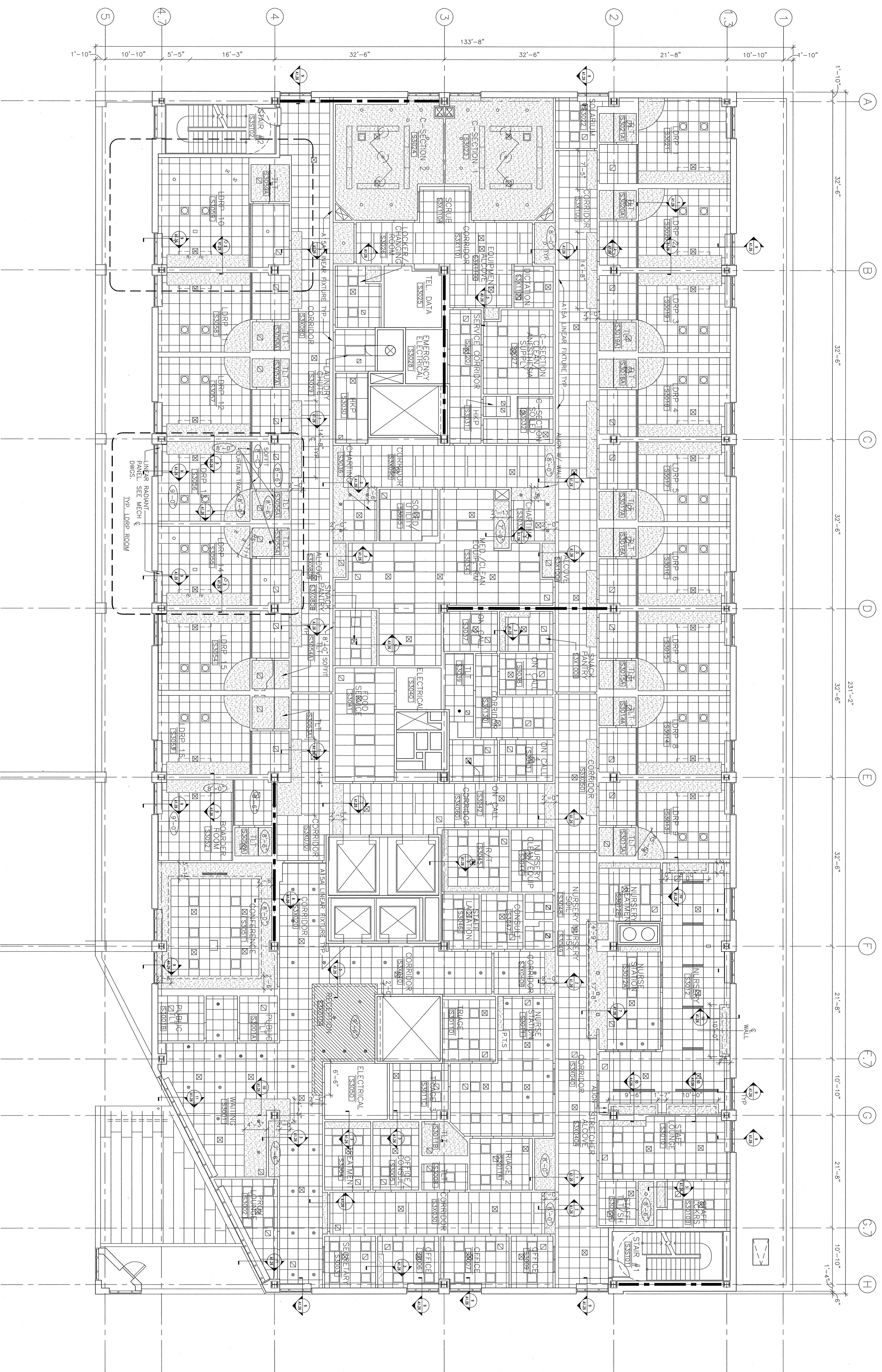


GENERAL CEILING CONSTRUCTION NOTES:

1. CEILING HEIGHT: 9'-0" A.F.F. UNLESS NOTED OTHERWISE
2. SOFTI ABOVE WALL CABINETS: 7'-0" A.F.F. UNLESS NOTED OTHERWISE

CEILING SYMBOL LEGEND

	RECESSED 4'-0" FIXTURE (A1)		2'x4' RECESSED LIGHT FIXTURE		SPEAKER
	RECESSED LINEAR WALL WASH (A15A)		2'x2' RECESSED LIGHT FIXTURE		EXHAUST FAN
	COMPACT FLUORESCENT DOWNLIGHT (A17)		SOUND LIGHT		2'x2' MECH. SUPPLY REGISTER
	COMPACT FLUORESCENT DOWNLIGHT ASYM. LENS (A17A)		RECESSED ADJUSTABLE DOWNLIGHT (A9)		2'x2' MECH. RETURN REGISTER
	COMPACT FLUORESCENT WALLWASH (A18)		ADJUSTABLE PINHOLE (A9)		ACCESS PANEL
	COMPACT FLUORESCENT W/ LOCATION (A22)		2'-0" RECESSED WALL FIXTURE (O1)		SMOKE DETECTOR
	DIRECT/INDIRECT FLUORESCENT (A2X2)		CEILING HUNG INDIRECT FLUORESCENT (A150)		X-X' CEILING HEIGHT
			GMB CEILING OR SOFTI		
			ACP GRID		



Revisions

Consultant:
 CIVIL ENGINEER
 KISTENL DAHLUTH
 No. 278
 South Portland, ME 04106
 Phone: (207) 772-1121
 Fax: (207) 879-0886

Consultant:
 ASSOCIATE ARCHITECT/STRUCTURAL ENGINEER
 144 Fore Street P.O. Box 618
 Portland, ME 04101
 Phone: (207) 772-3646
 Fax: (207) 772-1070

Consultant:
 MECHANICAL/ELECTRICAL ENGINEER
 Bird, Row & Atkins Consulting Engineers, LLC
 The Arsenal on the Courts
 Waterville, ME 02472-5789
 Phone: (617) 824-5339
 Fax: (617) 824-5339

Consultant:
 EQUIPMENT PLANNING
 Gene Burton & Associates
 1000 West End Ave. Suite 1400
 Nashville, TN 37203-5591
 Phone: (615) 376-3100
 Fax: (615) 376-3114

Consultant:
 CONSTRUCTION MANAGER
 Gilbane Building Company
 1000 Exchange Blvd. Suite 200
 Providence, Rhode Island 02903
 Phone: (401) 462-5116
 Fax: (401) 462-5116

Consultant:
 FOOD SERVICE
 F&S Inc. LLC
 1808 West End Ave. Suite 1400
 Nashville, TN 37203-5591
 Phone: (615) 321-5889
 Fax: (615) 321-5889

It is the responsibility of the Construction Sub-Contractors to verify all dimensions and layout before proceeding with any work.

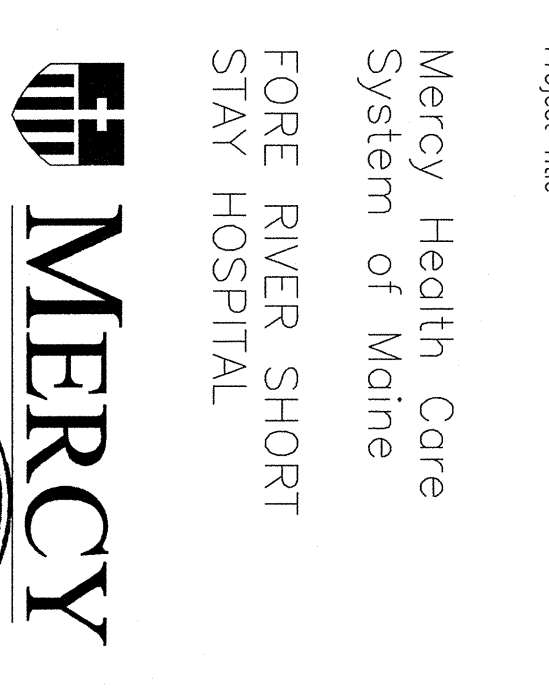
Date: 11/10/06
 Drawn By: FROI-BRAND FOR Construction
 ART/MD
 Scale:
 AS NOTED

Francis
 Cauffman

Foley
 Hoffmann

Francis Cauffman
 2120 Main Street
 Portland, ME 04103
 Phone: (207) 772-3646
 Fax: (207) 772-1070

Project Title:
 Mercy Health Care
 System of Maine
 FORE RIVER SHORT
 STAY HOSPITAL



Project Number:
 F03-4509
 Drawing Title and Number:
 Third Floor Reflected Ceiling Plan
 8/24/06

A5.03