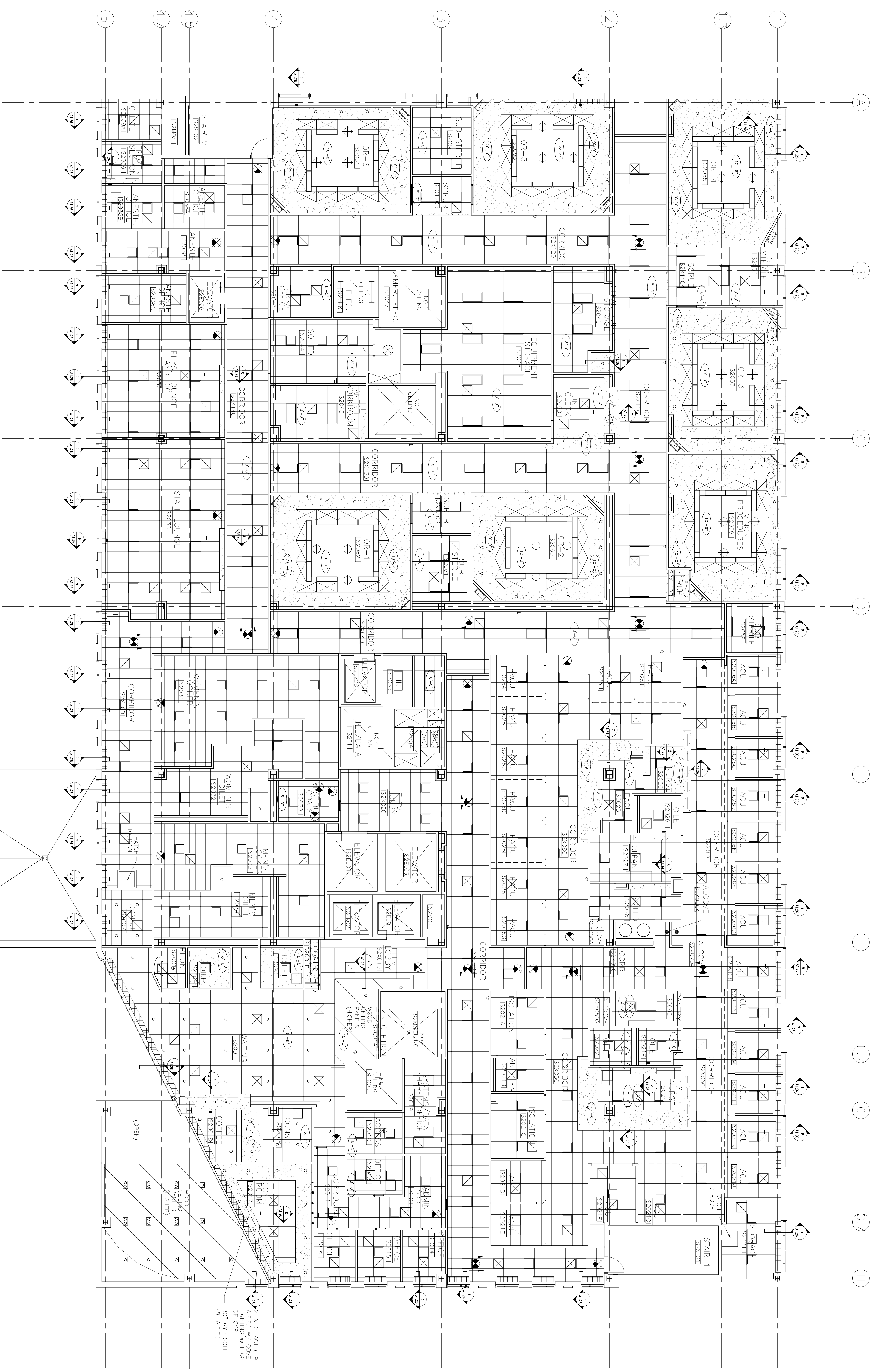


GENERAL CEILING CONSTRUCTION NOTES:

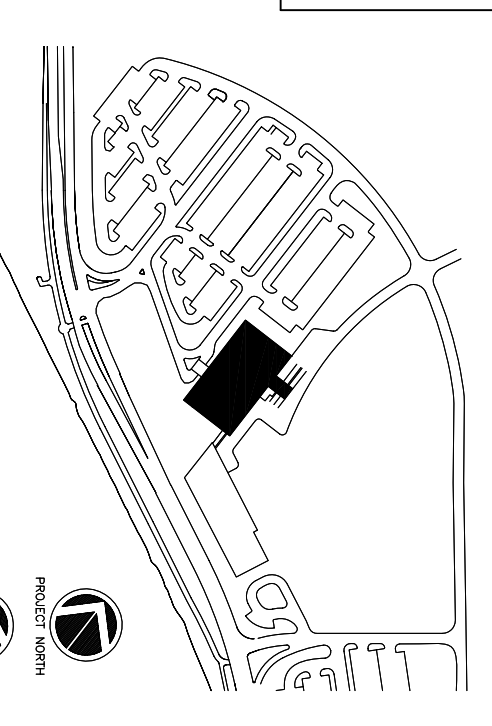
1. CEILING HEIGHT: 9'-0" A.F.F. UNLESS NOTED OTHERWISE.
SOFFIT ABOVE WALL CABINETS: 7'-0" A.F.F. UNLESS NOTED OTHERWISE.
2. BLUHEADS @ 7'-0" A.F.F. UNLESS NOTED OTHERWISE.

CEILING SYMBOL LEGEND

| | | | |
|--|---------------------------------|--|--------------------------------|
| | 2'x4' RECESSED LIGHT FIXTURE | | SPEAKER |
| | 2'x2' RECESSED LIGHT FIXTURE | | EXHAUST FAN |
| | RECESSED DOWNLIGHT | | 2'x2' MECH. SUPPLY REGISTER |
| | WALL WASHER | | 2'x2' MECH. RETURN REGISTER |
| | PENDANT LIGHT | | ACCESS PANEL |
| | DIRECTIONAL LIGHT | | SMOKE DETECTOR |
| | SCONCE LIGHT | | CEILING HEIGHT |
| | LINEAR DIFFUSER | | 1' x 4' RECESSED LIGHT FIXTURE |
| | 1' x 4' SUSPENDED LIGHT FIXTURE | | WOOD CEILING PANEL |
| | 1' x 4' RECESSED LIGHT FIXTURE | | GMB CEILING OR SOFFIT |
| | WOOD CEILING PANEL | | ACP OR HD |



SECOND FLOOR REFLECTED CEILING PLAN
AS.02 1/8"=1'-0"



Consultant
Civil Engineer Association, Inc.
775 Main Street, Suite 8
South Portland, ME 04106
Phone: (207) 879-0884
Fax: (207) 879-0884

Consultant
ASSOCIATE ARCHITECT/STRUCTURAL ENGINEER
144 Fore Street P.O. Box 618
Portland, Maine 04104
Phone: (207) 772-1070
Fax: (207) 772-1070

Consultant
Bochman/Anderson/Sinkovics Engineers, LLC
1000 Atlantic Avenue, Suite 200
The Assessed on the Orders
Waterbury, ME 02472-7289
Phone: 617-254-0018
Fax: 617-254-0018

Consultant
EQUIPMENT PLANNING
Gene Burton & Associates
General Building Services
Providence, RI 02907
Phone: (615) 376-3100
Fax: (615) 376-3114

Consultant
CONSTRUCTION MANAGER
Gibson Building Company
Providence, Rhode Island 02883
Phone: (401) 458-5865
Fax: (401) 458-5816

Consultant
FOOD SERVICE
1800 Academy Ave., LLC
1800 Academy Ave., LLC
Nashville, TN 37203-6571
Phone: (615) 221-5589
Fax: (615) 221-5589

It is the responsibility of the Construction Site Contractors to verify all dimensions and details before proceeding with any work.

DATE: 11/10/06 FINAL - ISSUE FOR BID

Drawn by: MAF/JUL/CJB/CLJ

Scale: AS NOTED

Francis

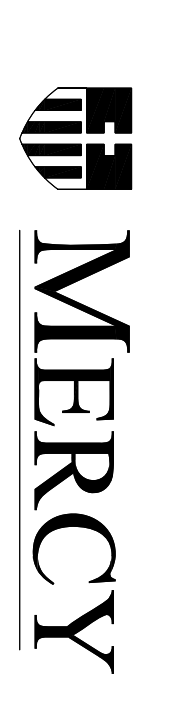
Caufman

Foley

Hoffmann

Fores Coakman
2120 Acorn Street
Providence, RI 01703
Phone: 401-585-8529
Address: 118

Project Title
Mercy Health Core
System of Maine
FORE RIVER SHORT
STAY HOSPITAL



Project Number
F05-4898

Drawing Title and Number
Second Floor
Reflected Ceiling Plan

AS.02