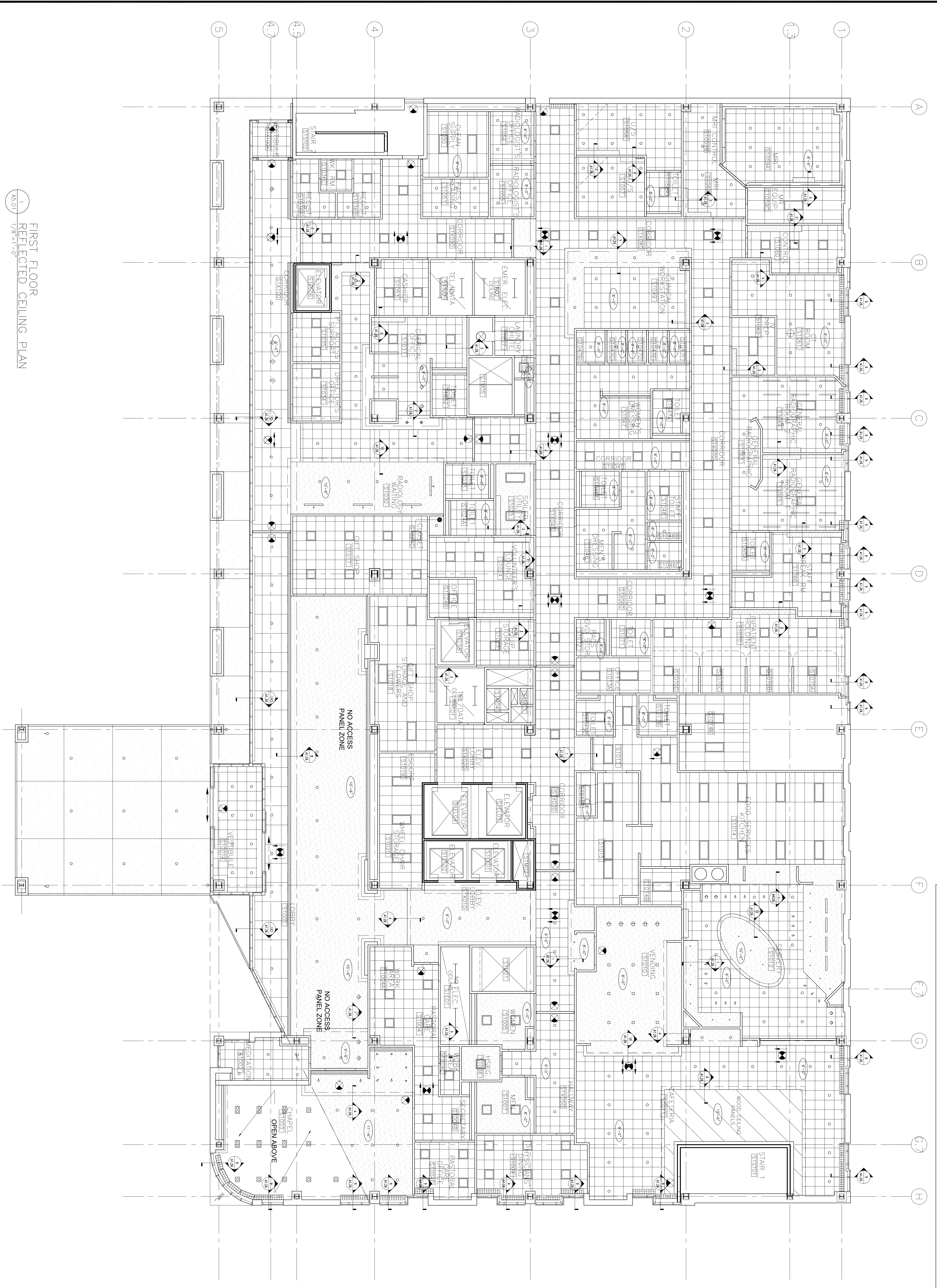


GENERAL CEILING CONSTRUCTION NOTES:

1. CEILING HEIGHT: 9'-0" AFF. UNLESS NOTED OTHERWISE
2. SOFFIT ABOVE WALL CABINETS: 7'-0" AFF. UNLESS NOTED OTHERWISE
3. BULKHEADS @ 7'-0" AFF. UNLESS NOTED OTHERWISE

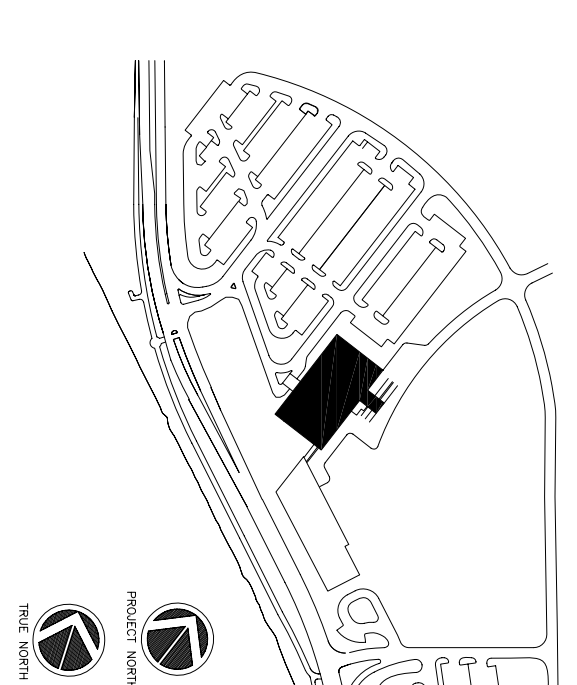
CEILING SYMBOL LEGEND

|  |                              |  |  |
|--|------------------------------|--|--|
|  | 2'x4' RECESSED LIGHT FIXTURE |  | SPEAKER  |
|  | 2'x2' RECESSED LIGHT FIXTURE |  | EXHAUST FAN  |
|  | RECESSED DOWNLIGHT           |  | 2'x2' MECH. SUPPLY REGISTER                          |
|  | WALL WASHER                  |  | 2'x2' MECH. RETURN REGISTER                          |
|  | PENDANT LIGHT                |  | ACCESS PANEL   |
|  | DIRECTIONAL LIGHT            |  | SMOKE DETECTOR                                       |
|  | SCONCE LIGHT                 |  | CEILING HEIGHT                                       |
|  | LINEAR DIFFUSER              |  | 1' X 4' CEILING MOUNTED<br>1' X 4' SUSPENDED FIXTURE |
|  | WOOD CEILING PANEL           |  | EXIT SIGN (ILLUMINATED)                              |
|  | WOOD CEILING PANEL           |  | GMB CEILING OR SOFFIT                                |
|  | ACP GRID                     |  |  |



1 FIRST FLOOR  
REFLECTED CEILING PLAN  
AS.01 1/8"=1'-0"

Revisions



Consultant  
 Civil Engineer  
 Dulmus-Hoffman Associates, Inc.  
 228 Main Street, Suite 4106  
 Philadelphia, PA 19106  
 Phone (207) 775-1121  
 Fax (207) 879-0898

Consultant  
 Associate Architect/Structural Engineer  
 SMART Group P.C. Box 618  
 Philadelphia, PA 19104  
 Phone (207) 772-3846  
 Fax (207) 772-1070

Consultant  
 Mechanical/Electrical Engineer  
 BIRD, BOG & ABRAMS Consulting Engineers, LLC  
 311 Arsenal Street, Suite 200  
 Philadelphia, PA 19106  
 Phone (610) 754-0012  
 Fax (610) 754-0012

Consultant  
 Equipment Planning  
 BIRDA CONSULTANTS  
 1805 General George Patton Drive  
 Fort Worth, Texas 76107  
 Phone (817) 376-3114  
 Fax (817) 376-3114

Consultant  
 Construction Manager  
 7 Jackson Walkway  
 Philadelphia, PA 19106  
 Phone (401) 456-5500  
 Fax (401) 456-5516

Consultant  
 Interior Designer  
 Ingoz Foster/Ingoz, LLC  
 1808 West End Ave. Suite 1400  
 Philadelphia, PA 19103  
 Phone (610) 321-5591  
 Fax (610) 321-5589

Date  
 11/10/06 FINAL - ISSUE FOR BID

Drawn By  
 MAF/JUL/CLB/OLJ

Scale  
 AS NOTED

Francis

Caufman

Foley

Hoffmann

Project Title  
 Mercy Health Care  
 System of Maine  
 FORE RIVER SHORL  
 STAY HOSPITAL

Project Location  
 3129 Ash Street  
 Philadelphia, PA 19103  
 Architects Ltd.  
 215-568-8250



Project Number  
 F05-4898

Drawing Title and Number  
 First Floor  
 Reflected Ceiling Plan  
**AS.01**