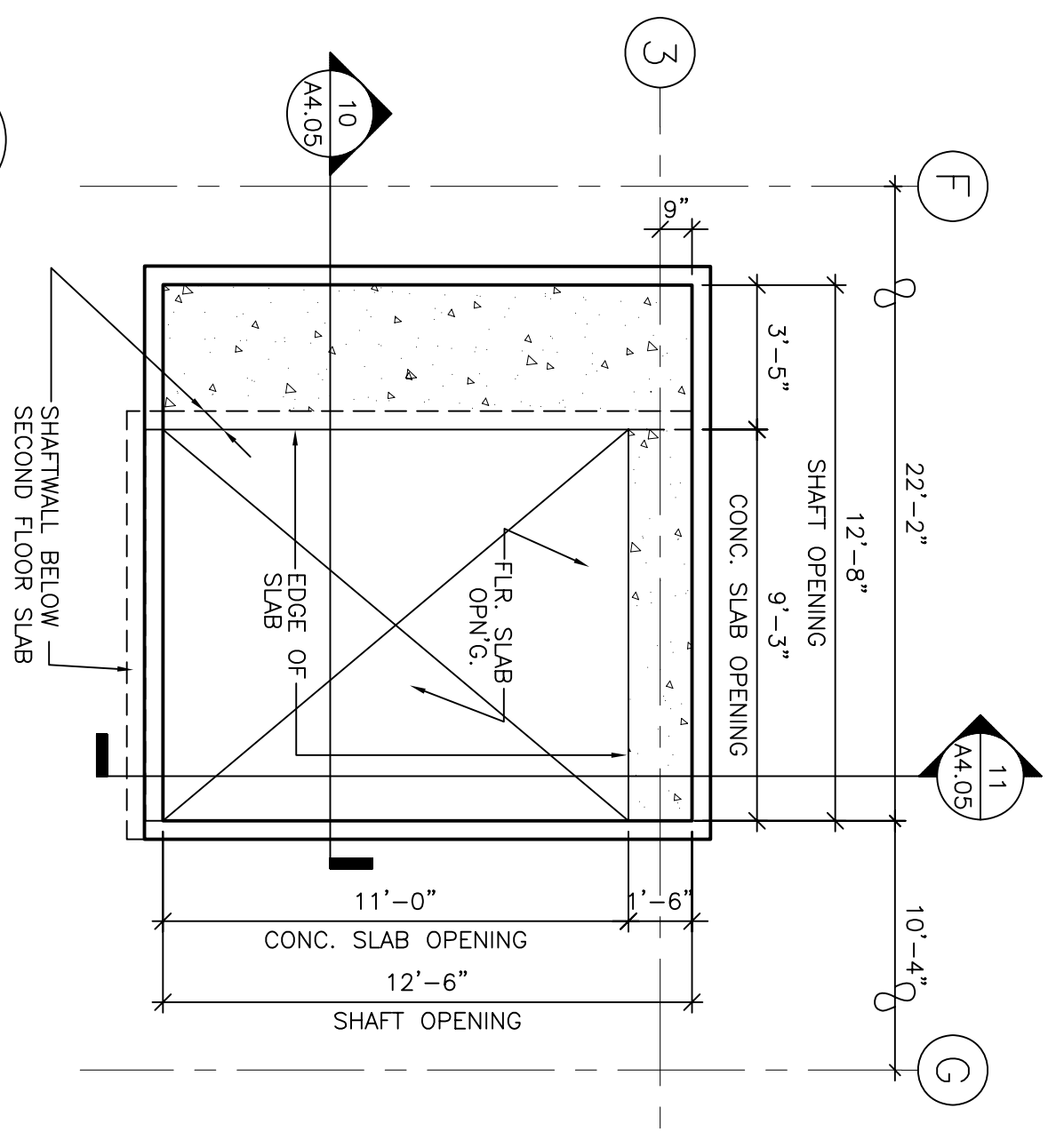
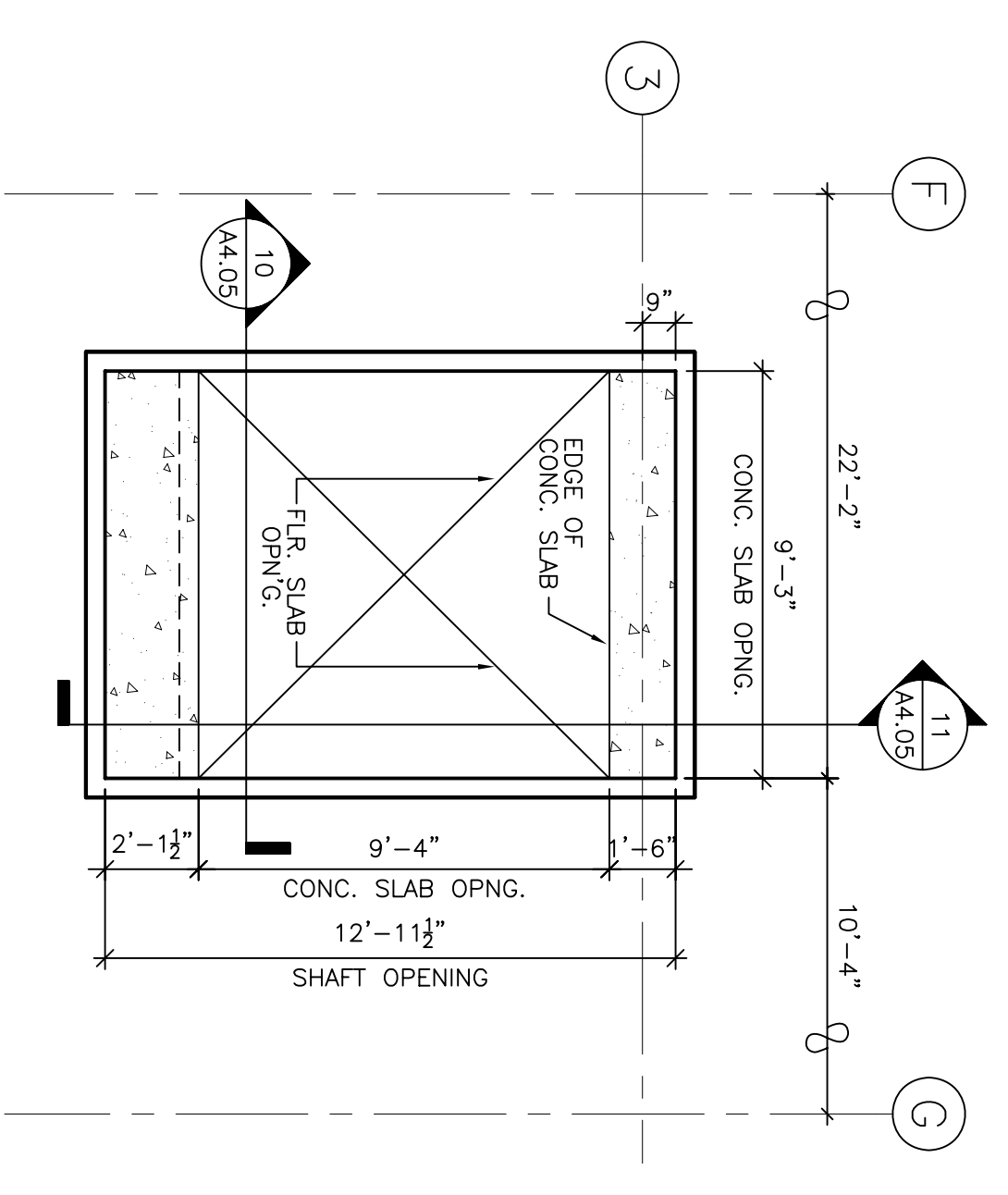


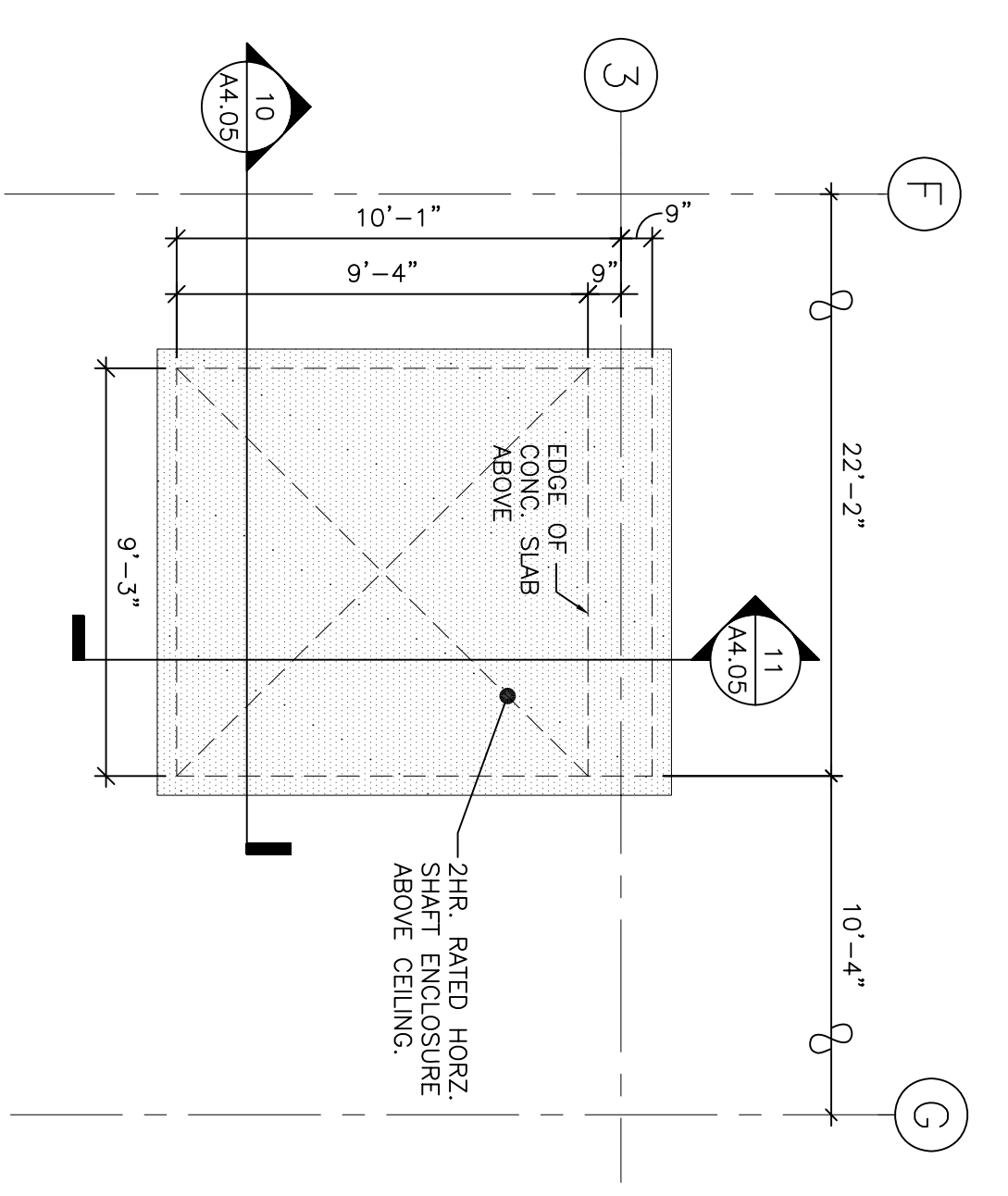
4 THIRD & FOURTH FLOOR SOUTH SHAFT
SCALE: 1/4"=1'-0"



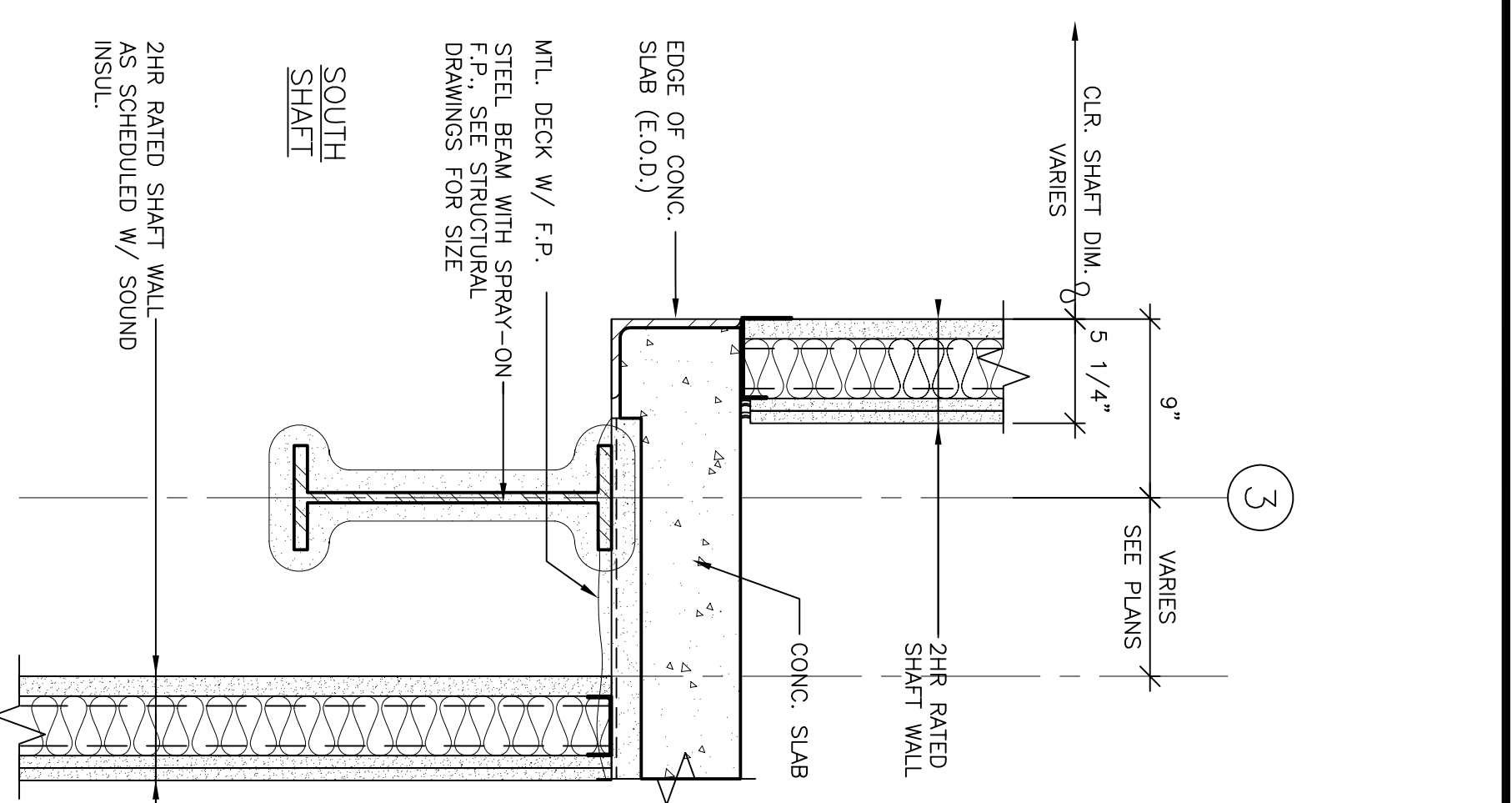
3 SECOND FLOOR SOUTH SHAFT
SCALE: 1/4"=1'-0"



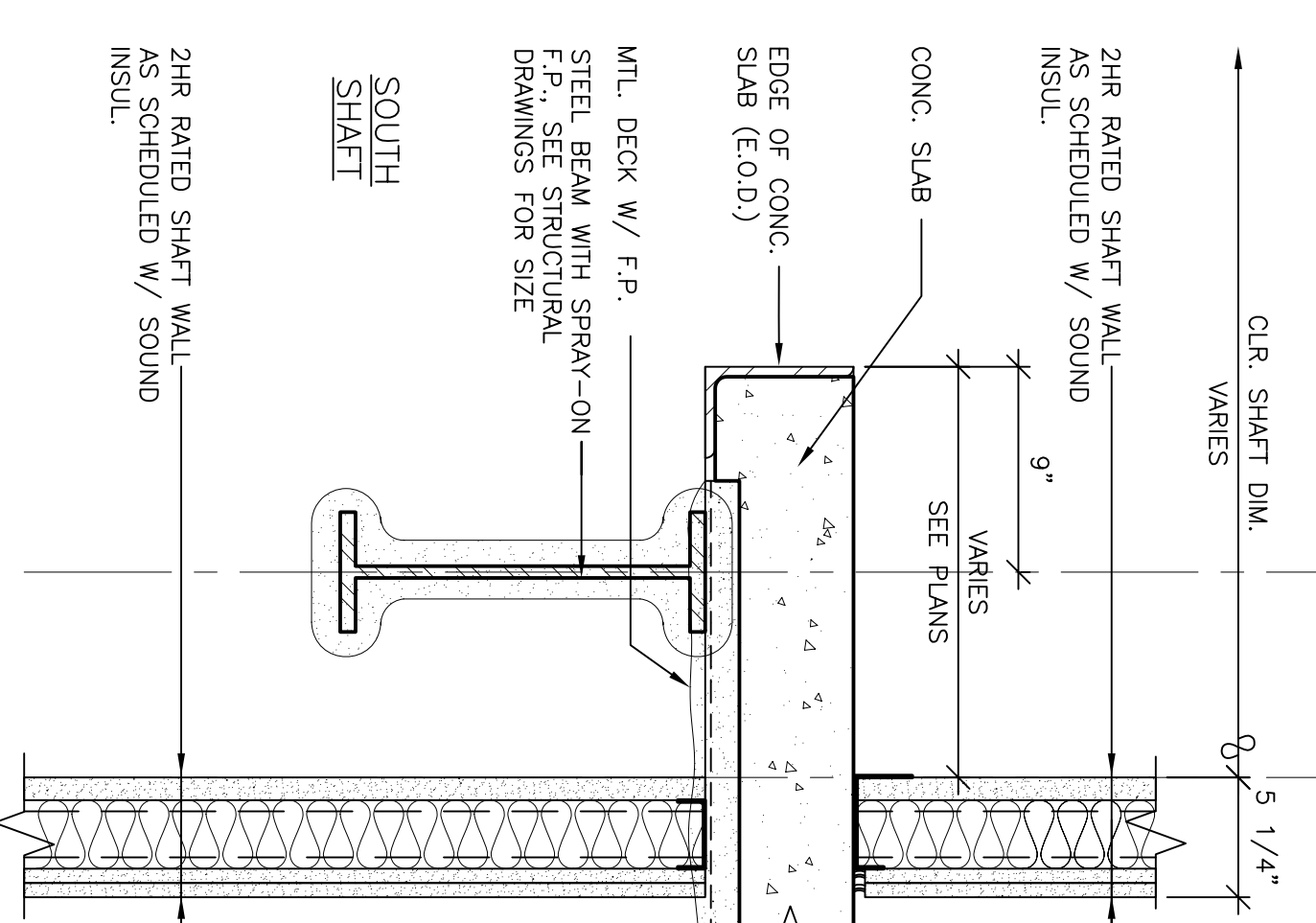
2 FIRST FLOOR SOUTH SHAFT
SCALE: 1/4"=1'-0"



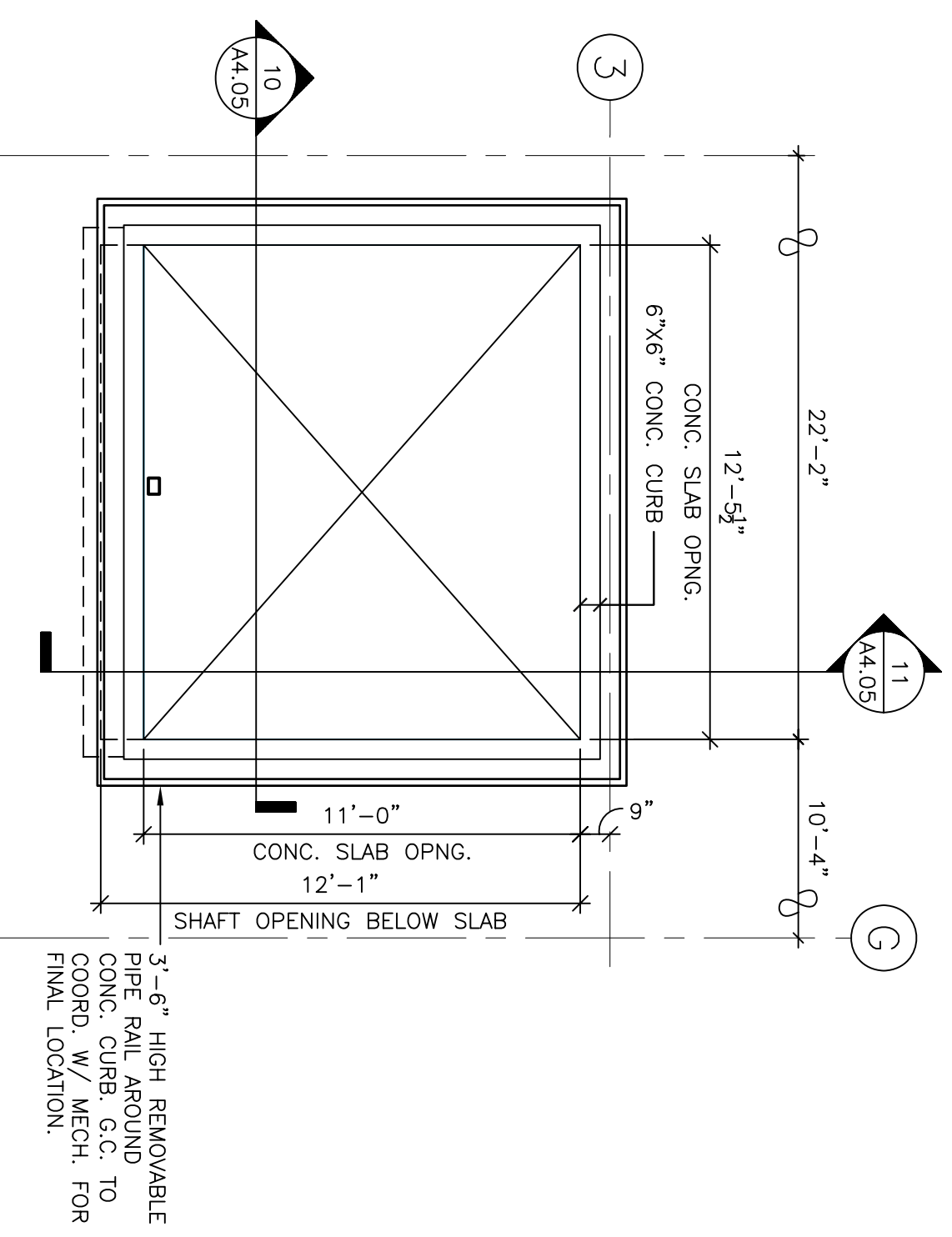
1 GROUND FLOOR SOUTH SHAFT ABOVE CEILING
SCALE: 1/4"=1'-0"



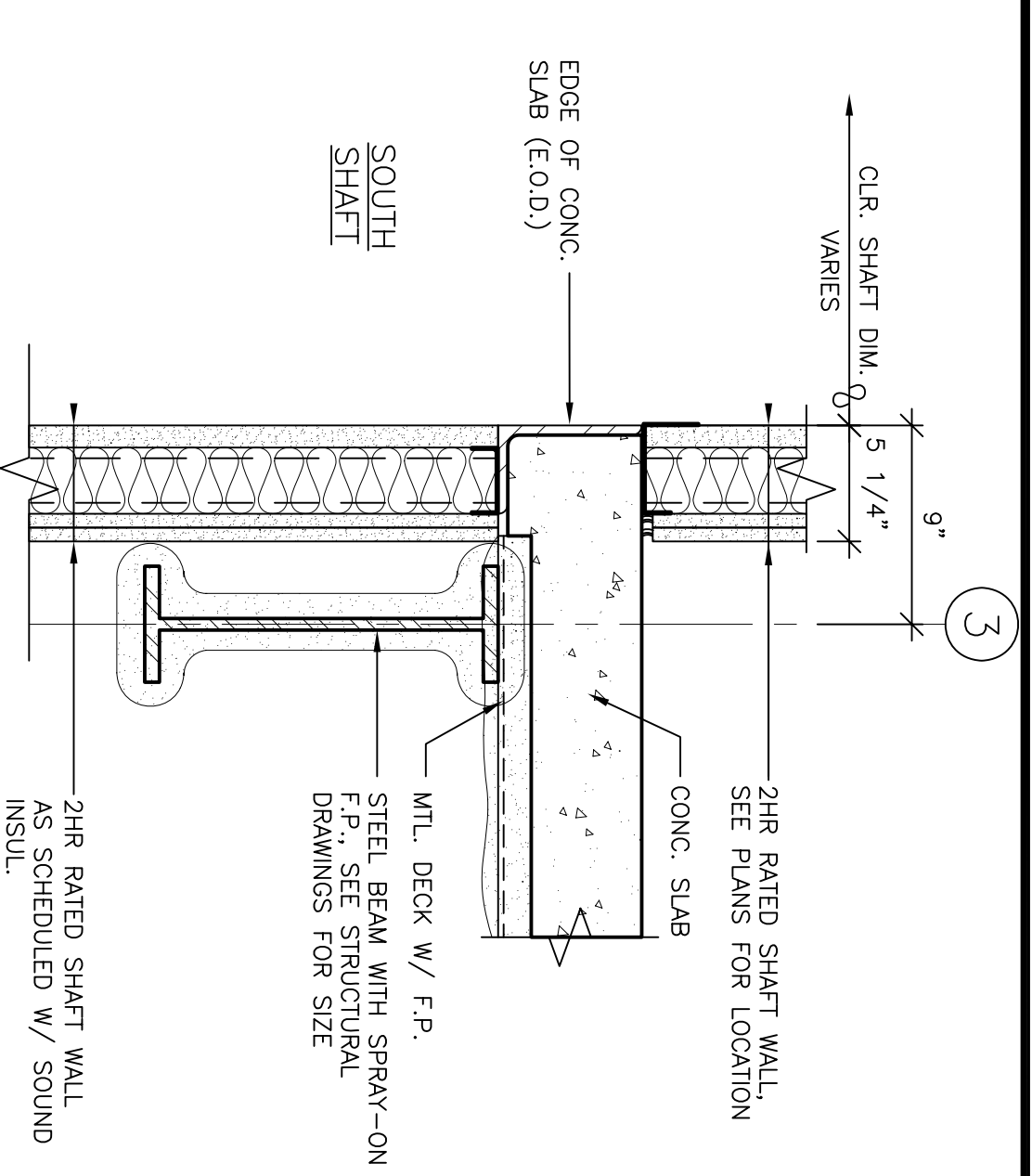
7 SLAB OPENING DETAIL AT SOUTH SHAFT
SCALE: 1 1/2"=1'-0"



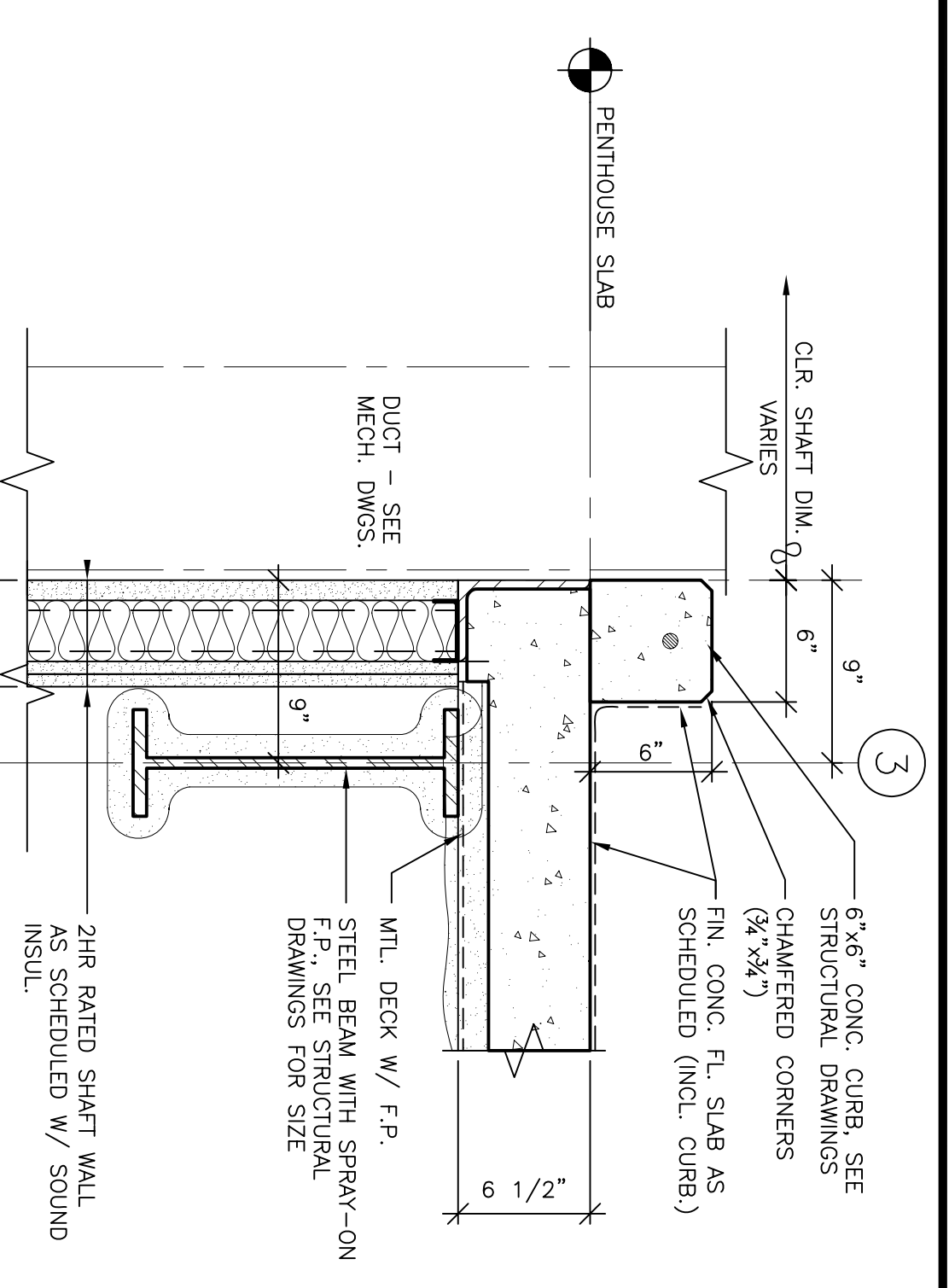
6 SLAB OPENING DETAIL AT SOUTH SHAFT
SCALE: 1 1/2"=1'-0"



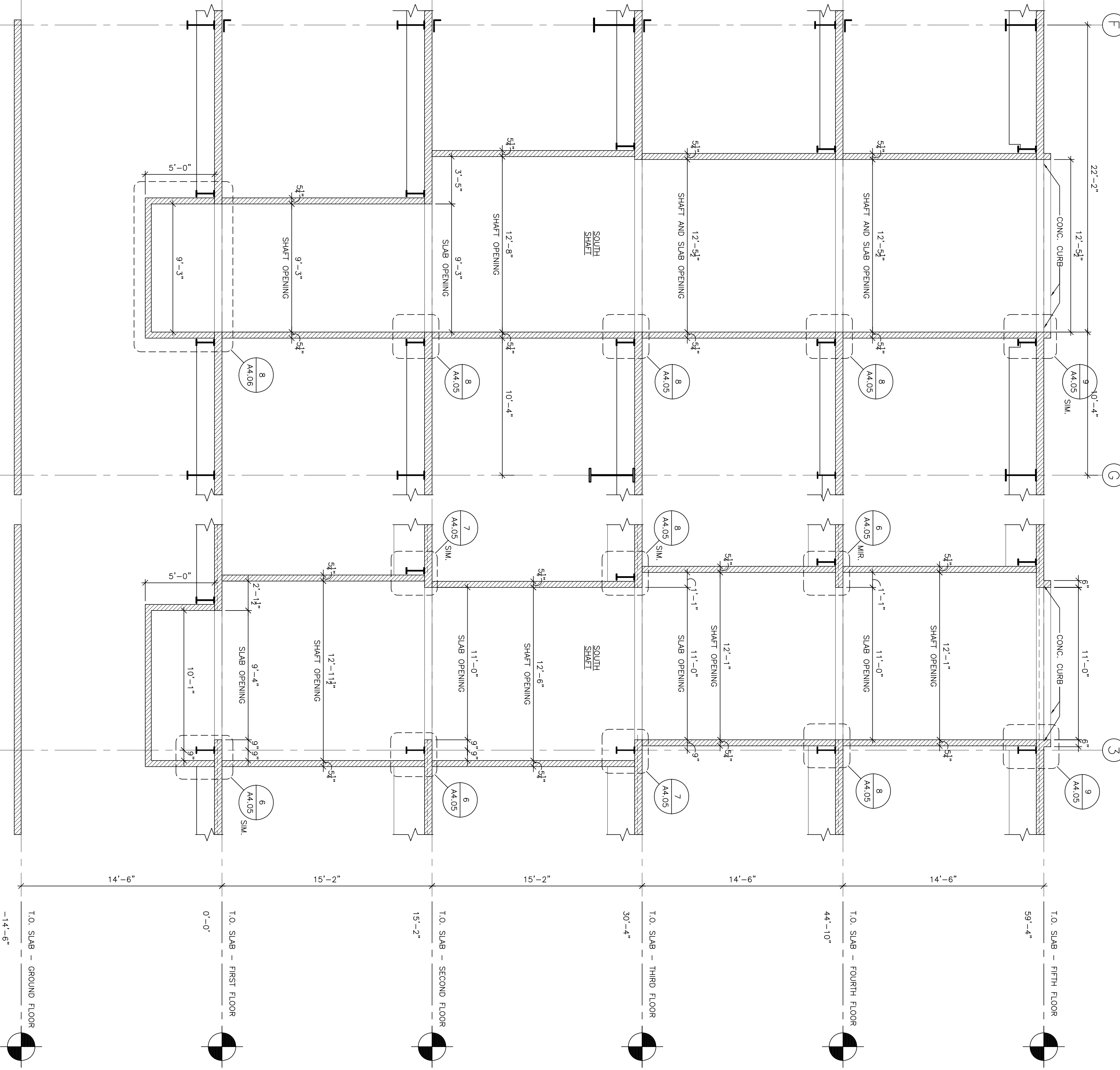
5 FIFTH FLOOR SOUTH SHAFT
SCALE: 1/4"=1'-0"



8 SLAB OPENING DETAIL AT SOUTH SHAFT
SCALE: 1 1/2"=1'-0"



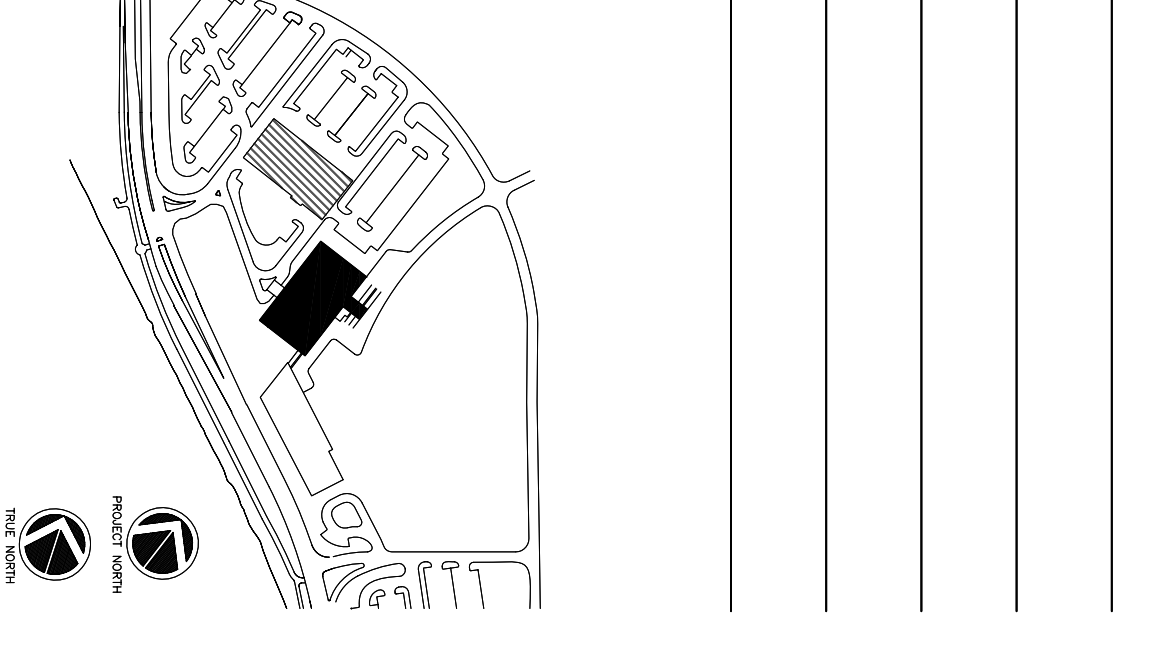
9 SLAB OPENING DETAIL AT MECH. SHAFT PENTHOUSE FLOOR
SCALE: 1/4"=1'-0"



10 SECTION THROUGH SOUTH SHAFT
SCALE: 1/4"=1'-0"

11 SECTION THROUGH SOUTH SHAFT
SCALE: 1/4"=1'-0"

Revisions



Consultant: CORE & SHELL ISSUED FOR CONSTRUCTION
10.02.06
MAF/JUL/CLB/CLW/LMS
Scale: AS NOTED

Consultant: FRANCIS

Consultant: CAUFFMAN

Consultant: FOLEY

Consultant: HOFFMANN

Project Title: MERCY FORE RIVER SHORT STAY HOSPITAL
2130 Acacia Street
Philadelphia, PA 19103
215-268-8250

Project Number: F05-4898
Drawing Title and Number: South Shaft Partial Plans, Sections and Details

A4.05