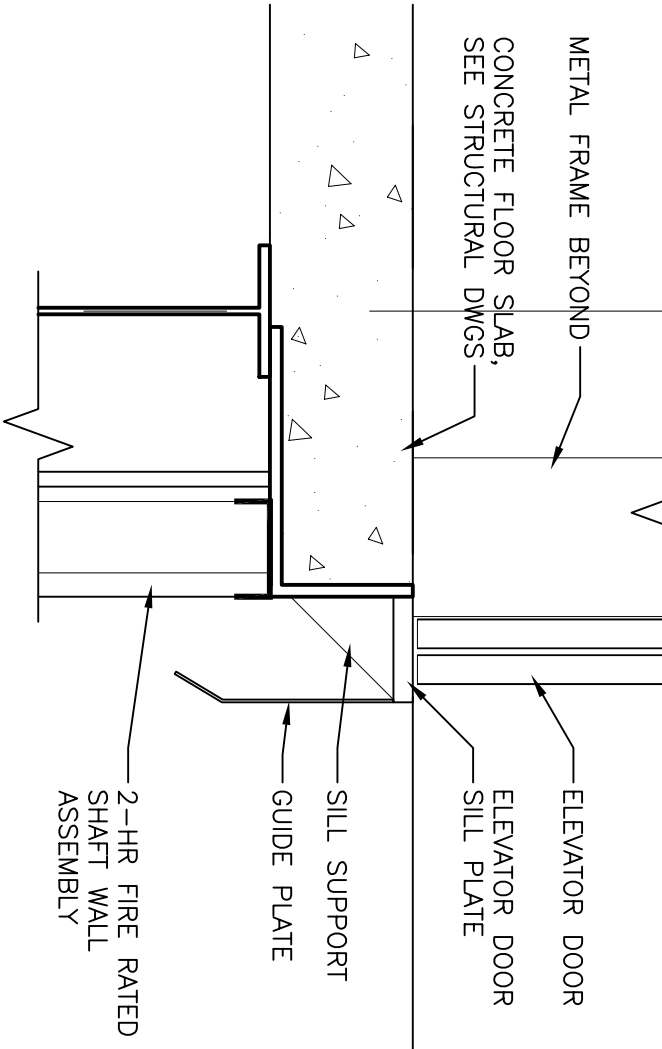
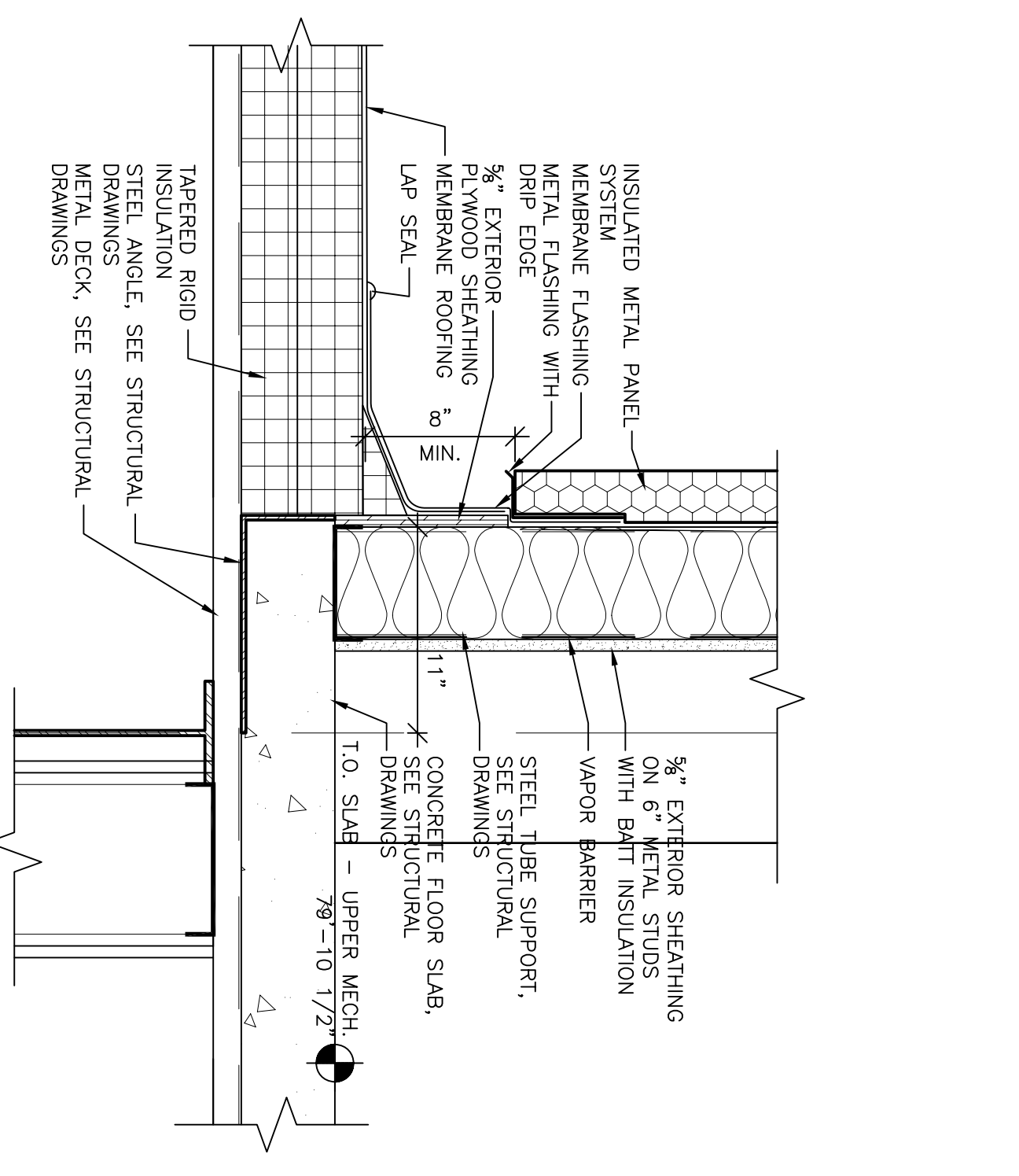


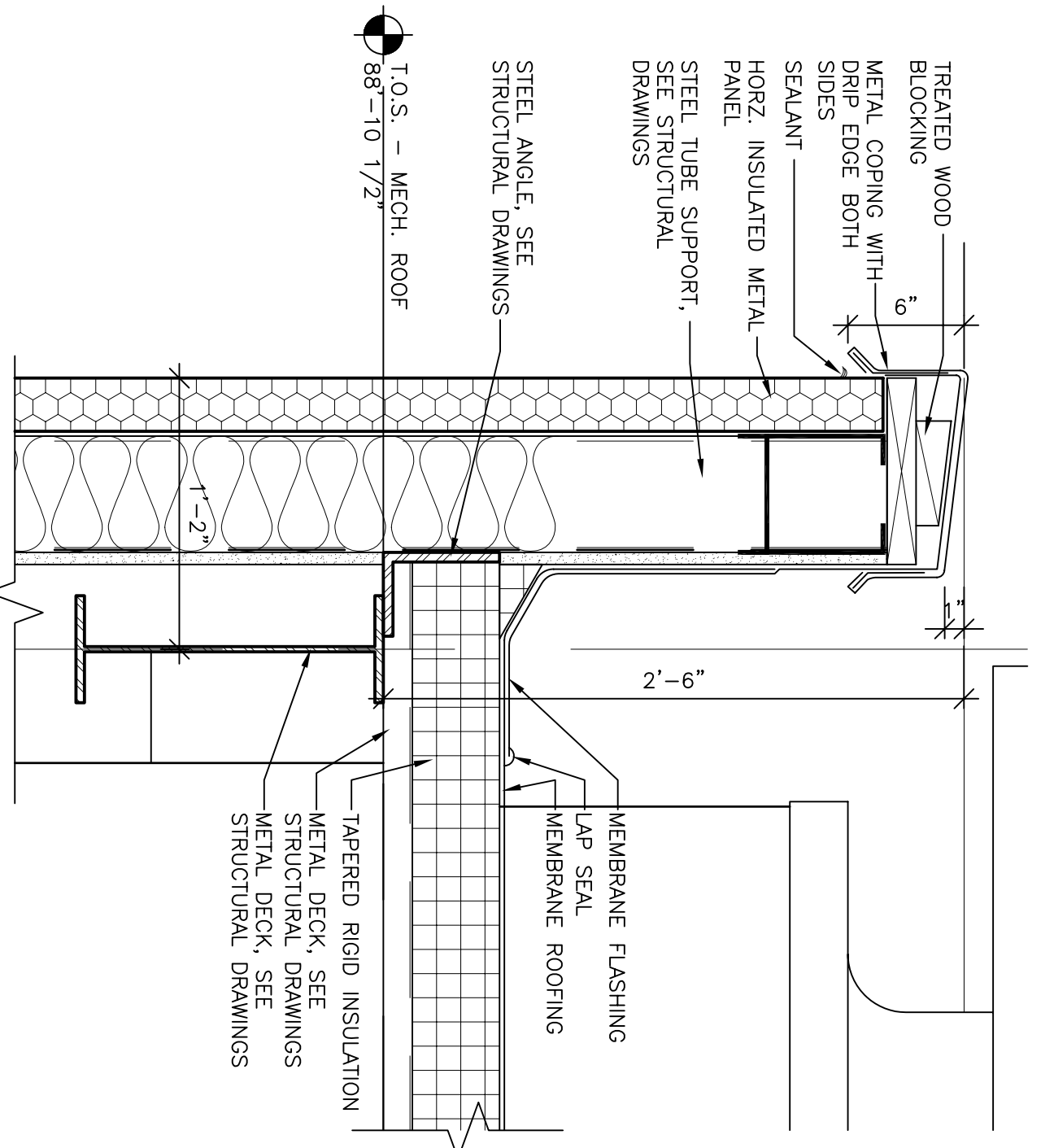
6 SECTION DETAIL (TYP. HEADER)
SCALE: 1/2"=1'-0"



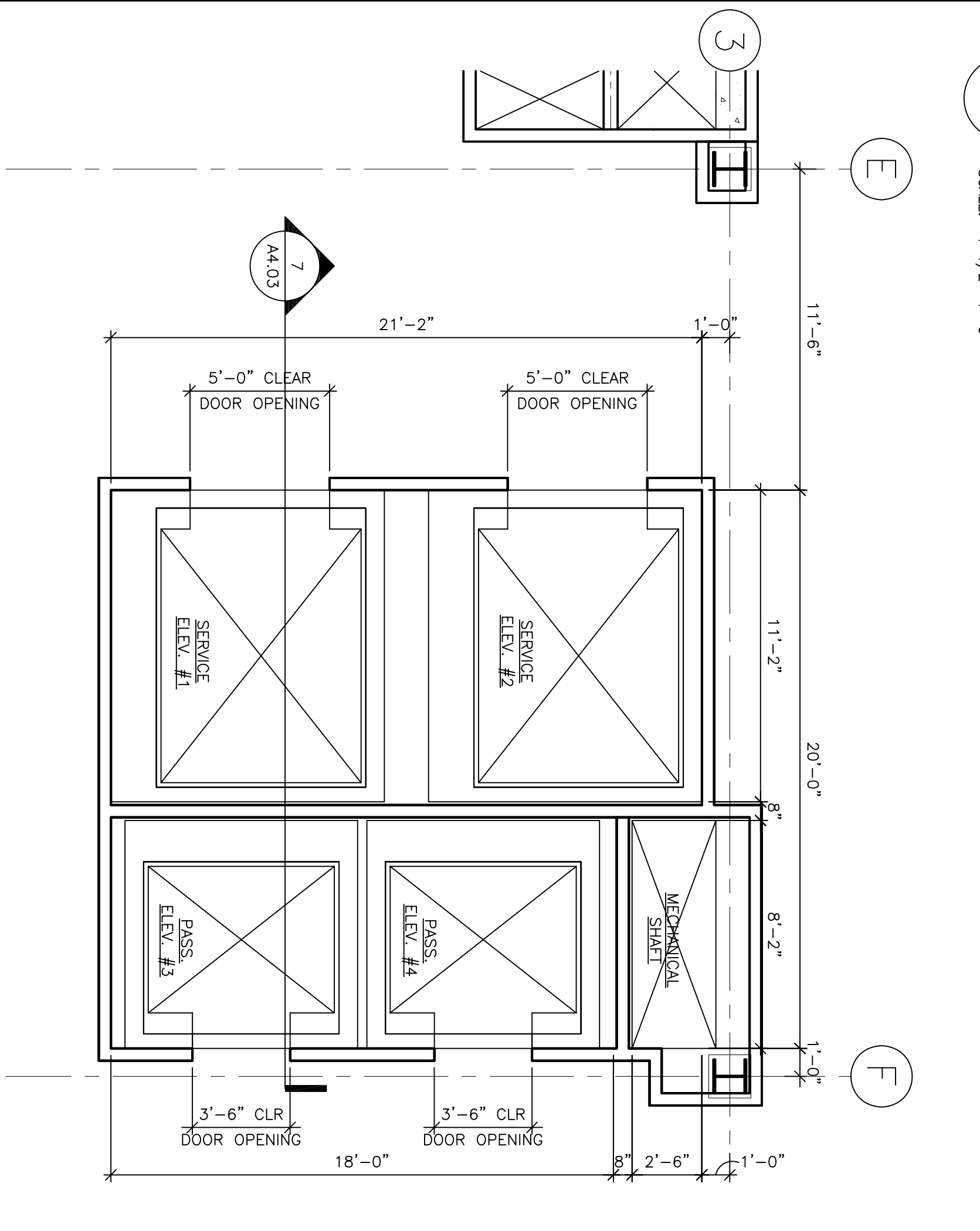
5 SECTION DETAIL (TYP. SILL)
SCALE: 1/2"=1'-0"



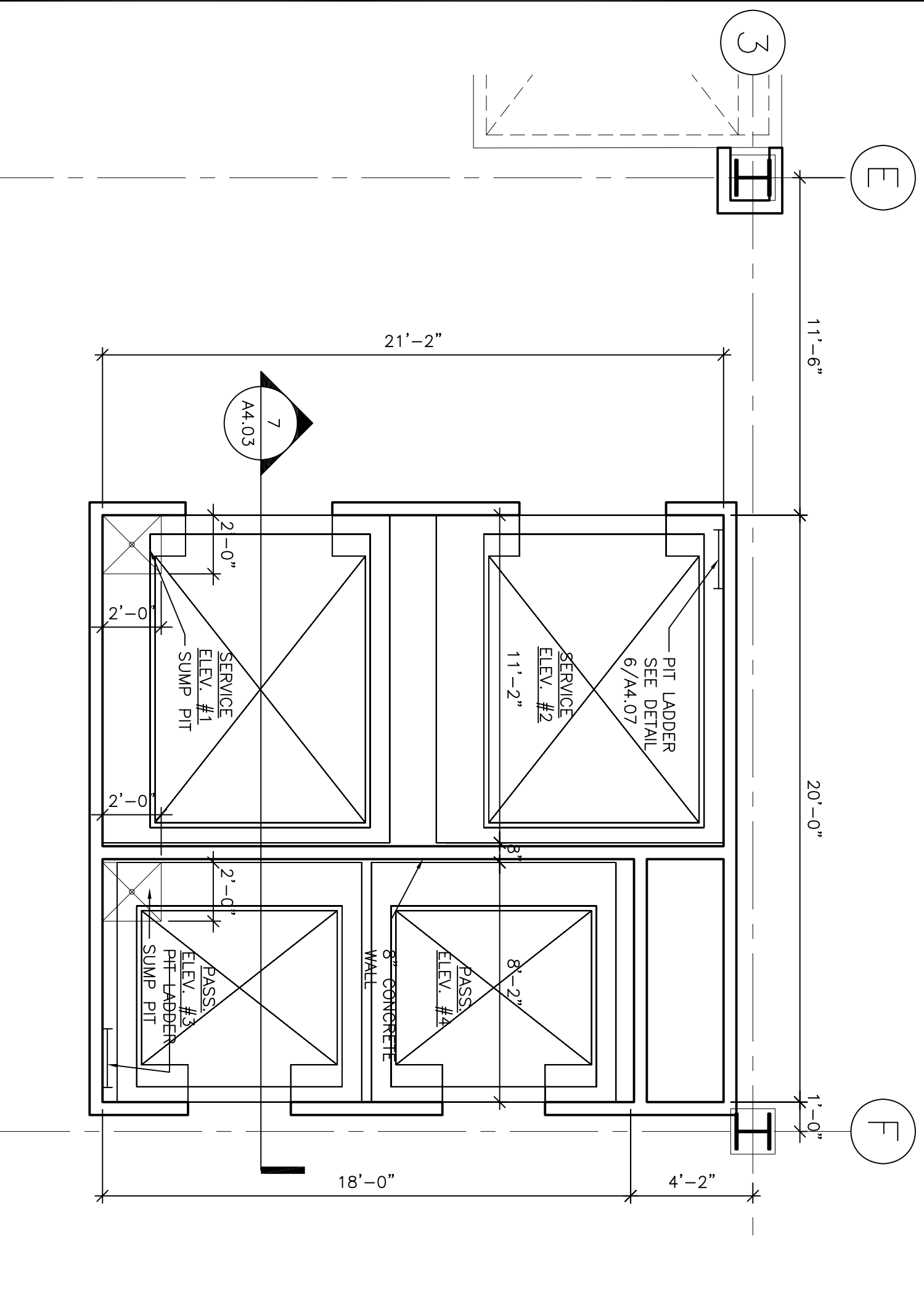
7 SECTION DETAIL
SCALE: 1/2"=1'-0"



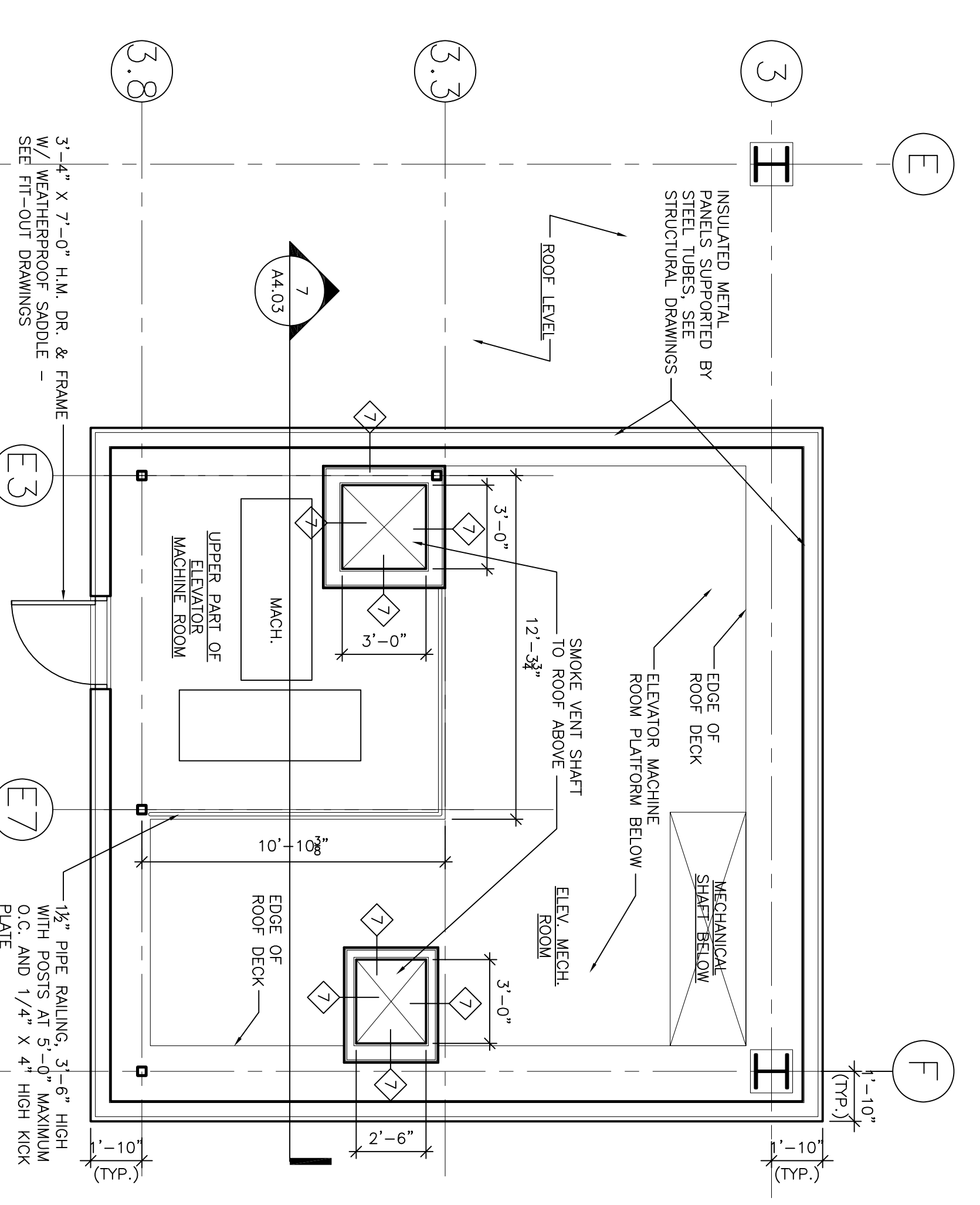
8 SECTION DETAIL
SCALE: 1/2"=1'-0"



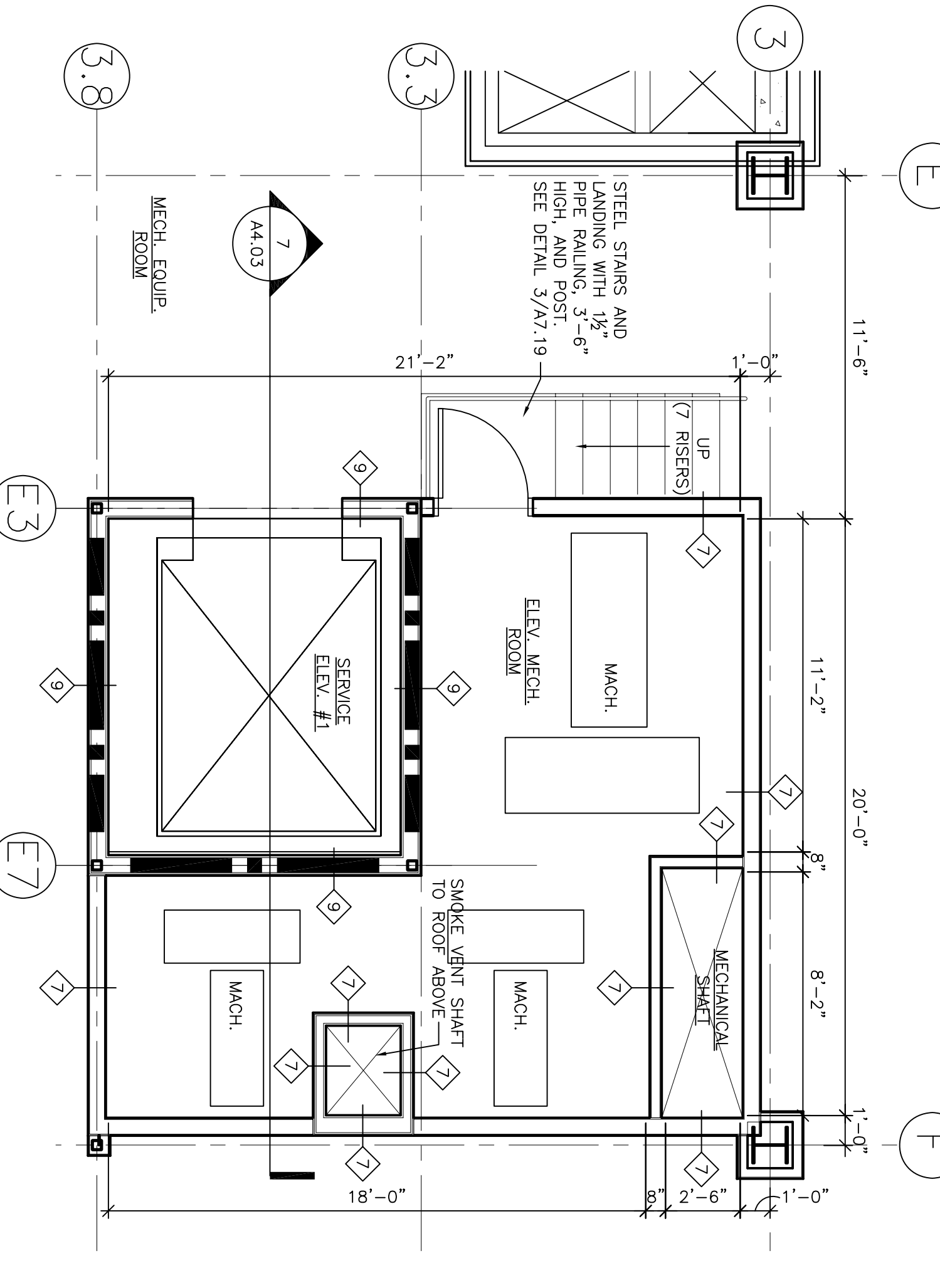
2 ELEVATOR CORE PLAN - TYPICAL FLOORS (GROUND, 1ST THRU 4TH FLOORS)
SCALE: 1/4"=1'-0"



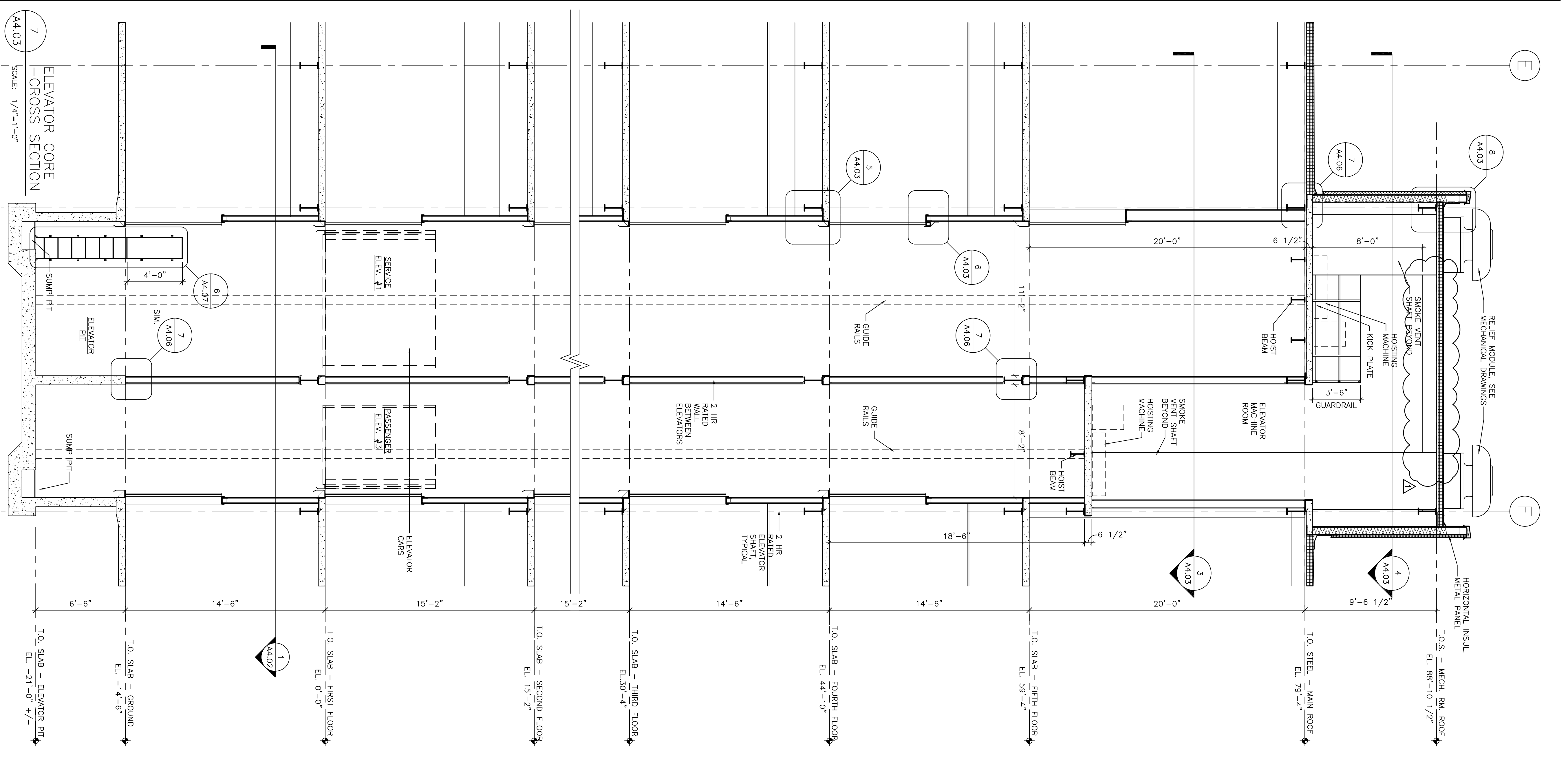
1 ELEVATOR CORE PLAN - GROUND FLOOR
SCALE: 1/4"=1'-0"



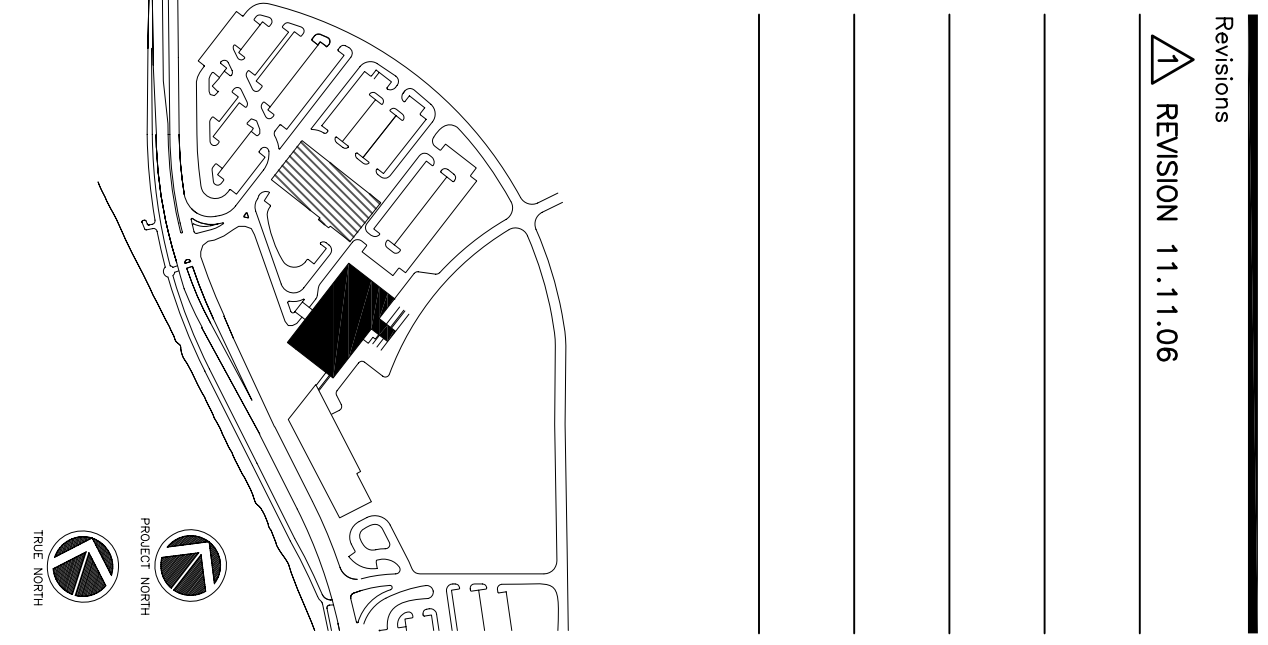
4 ELEVATOR CORE PLAN - 5TH FLOOR (UPPER ELEVATOR MACHINE ROOM)
SCALE: 1/4"=1'-0"



3 ELEVATOR CORE PLAN - 5TH FLOOR ELEVATOR MACHINE ROOM
SCALE: 1/4"=1'-0"



7 ELEVATOR CORE - CROSS SECTION
SCALE: 1/4"=1'-0"



Consultant:
CONUL ENGINEERS
CONUL ENGINEERS Associates, Inc.
278 Main Street, Suite 806
Portland, Maine 04103
Phone: (207) 772-1121
Fax: (207) 879-0886

Consultant:
MECHANICAL/ELECTRICAL ENGINEER
Burd, Rood & Atherton Consulting Engineers, LLC
144 Fore Street P.O. Box 618
Portland, Maine 04103
Phone: (207) 772-3846
Fax: (207) 772-1070

Consultant:
EQUIPMENT PLANNING
Egbe Burton & Associates
1100 South Portland Road
South Portland, Maine 04086
Phone: (603) 281-3114
Fax: (603) 281-3114

Consultant:
CONSTRUCTION MANAGER
7 Jackson Walkway
Portland, Maine 04103
Phone: (401) 458-5516
Fax: (401) 458-5516

Consultant:
FOOD SERVICE
Rood Service, LLC
1808 West End Ave. Suite 1400
Portland, Maine 04103
Phone: (603) 321-5591
Fax: (603) 321-5689

Consultant:
MANAGER/General Contractor and all other and recent conditions of prior work, by retained trades before proceeding with any work.

Date: 10.02.06
Drawn By: MAF/JLV/CLB/CLV/LMS
Scale: AS NOTED
Title: CORE & SHELL ISSUED FOR CONSTRUCTION

Project Number: F05-4898
Drawing Title and Number: Elevator Plans, Sections and Details

