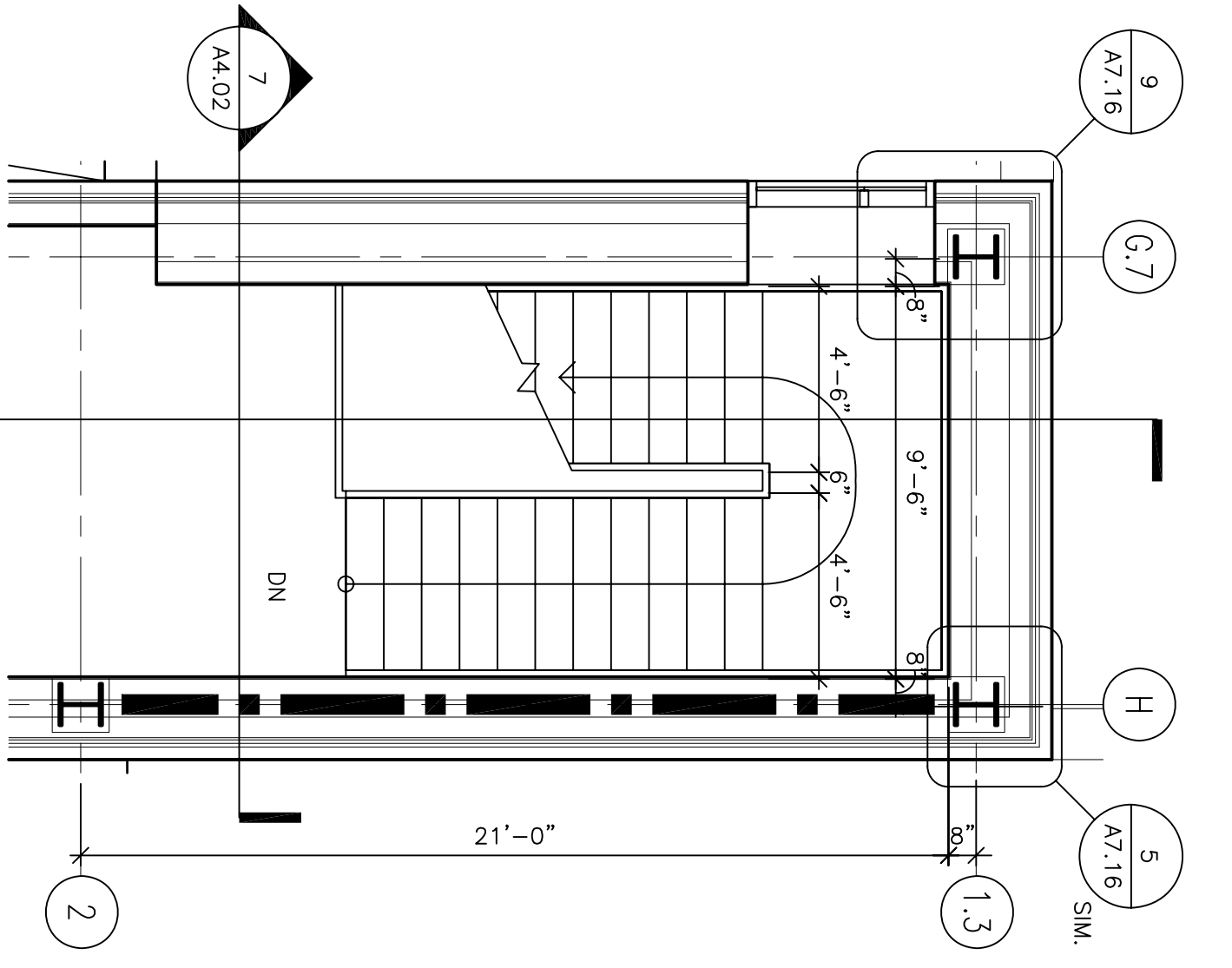
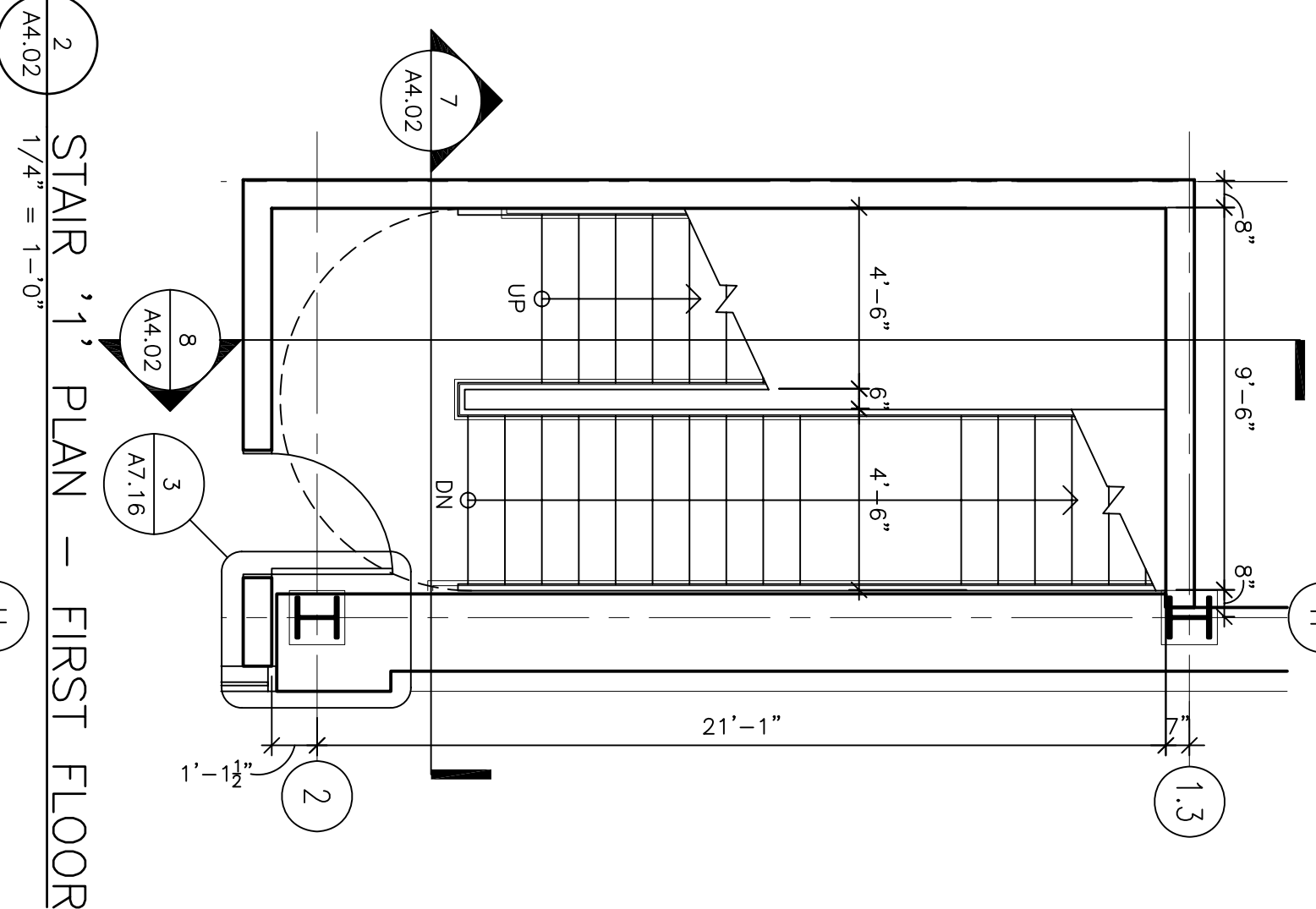


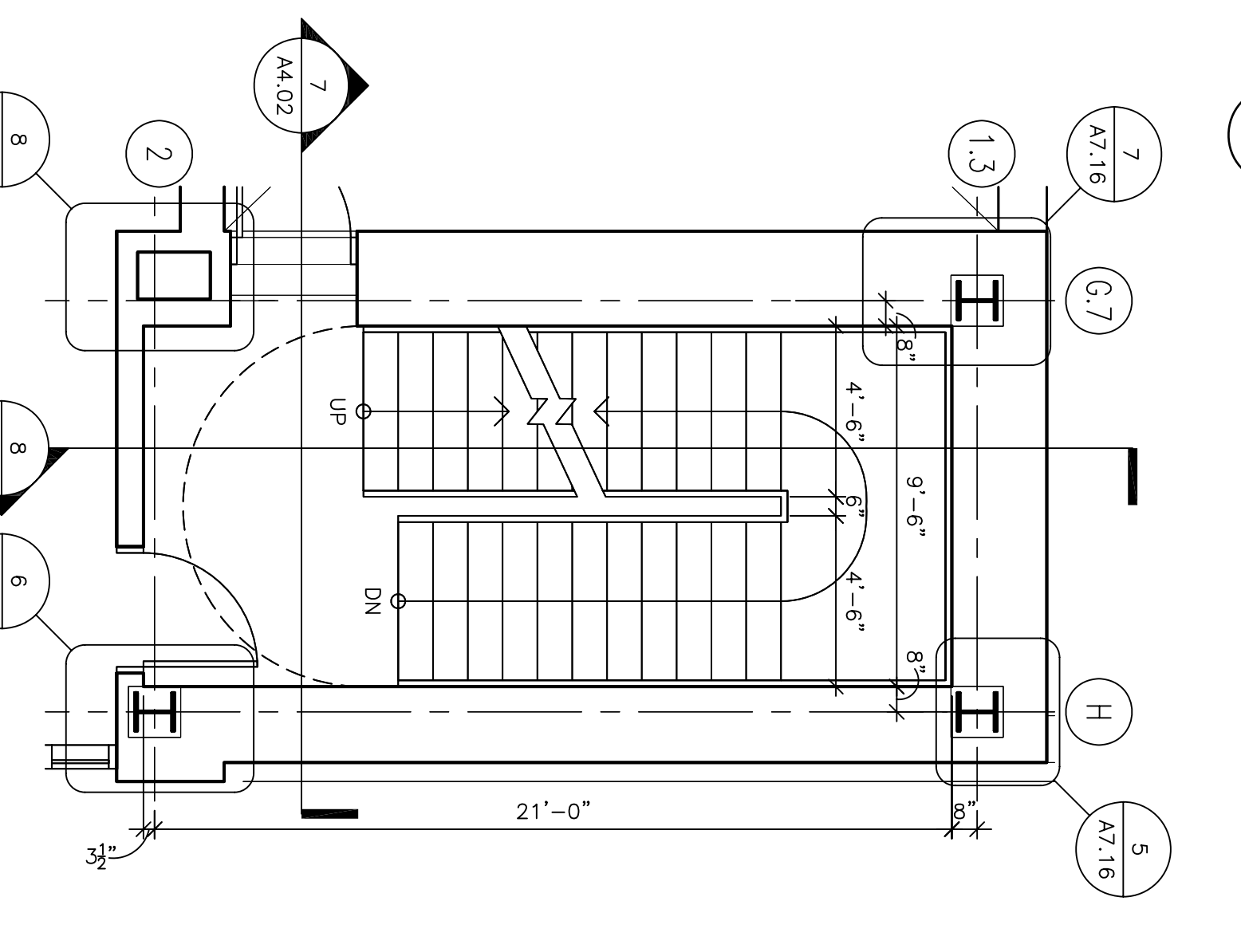
3 STAIR '1' PLAN - SECOND FLOOR
1/4" = 1'-0"



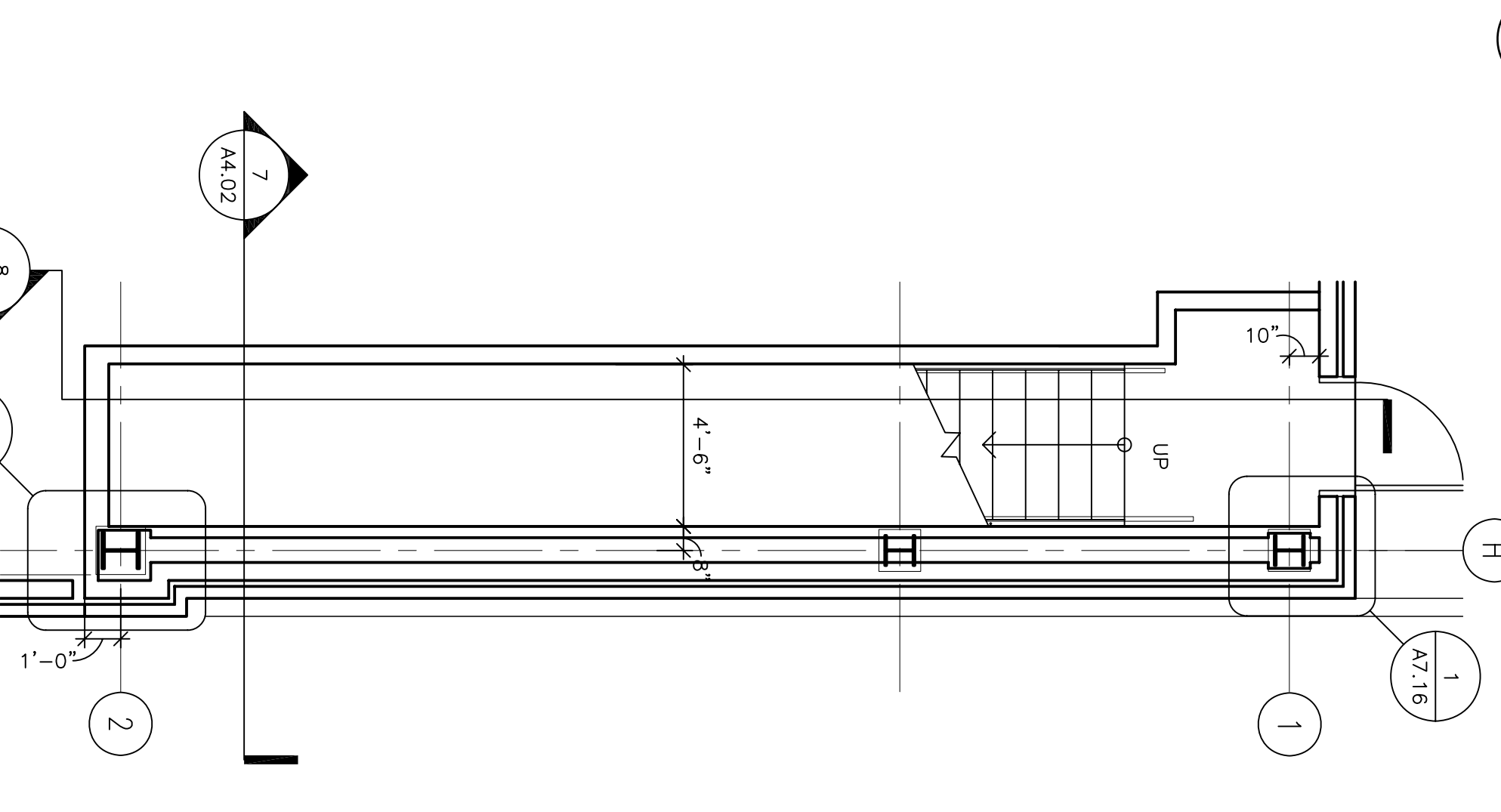
6 STAIR '1' PLAN - FIFTH FLOOR
1/4" = 1'-0"



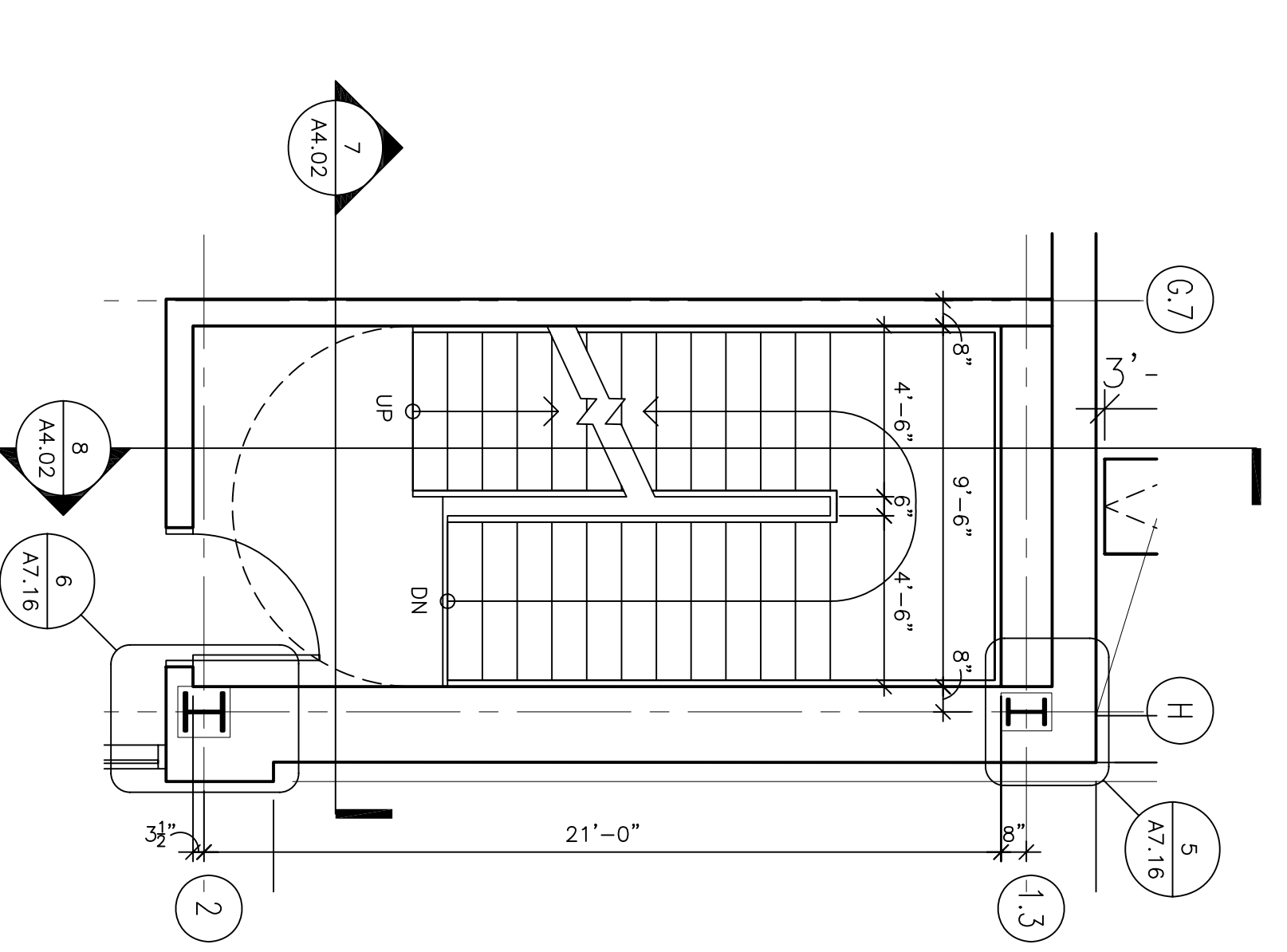
2 STAIR '1' PLAN - FIRST FLOOR
1/4" = 1'-0"



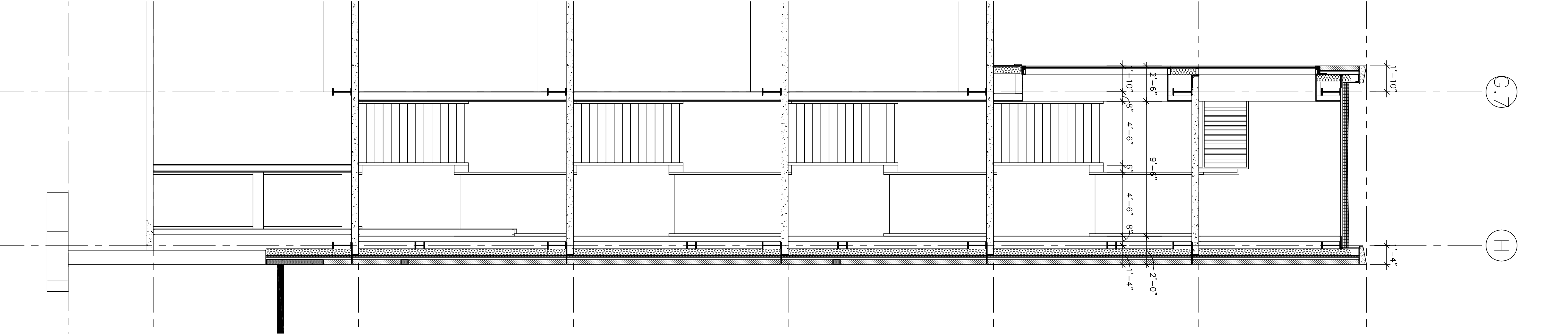
5 STAIR '1' PLAN - FOURTH FLOOR
1/4" = 1'-0"



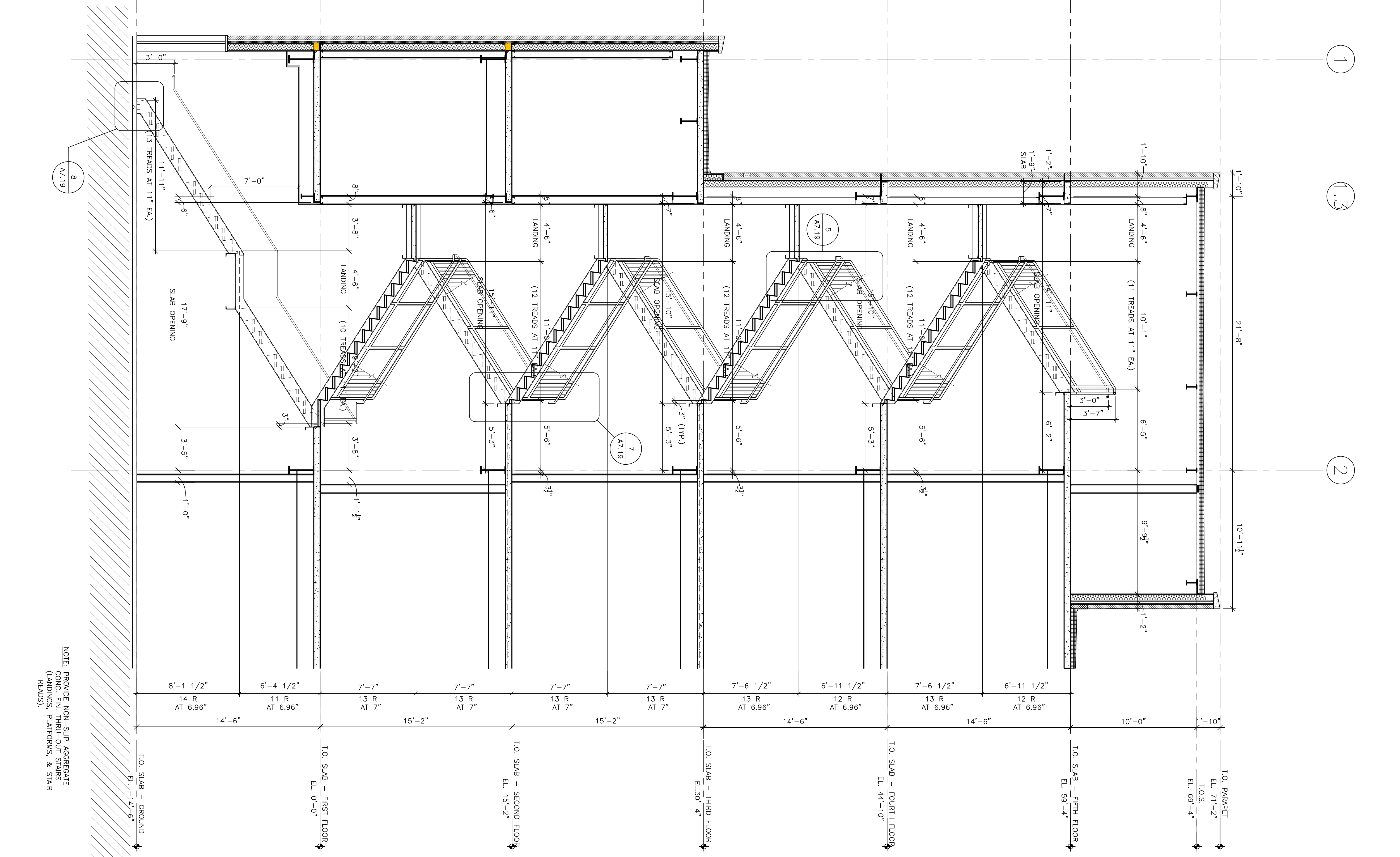
1 STAIR '1' PLAN - GROUND FLOOR
1/4" = 1'-0"



4 STAIR '1' PLAN - THIRD FLOOR
1/4" = 1'-0"

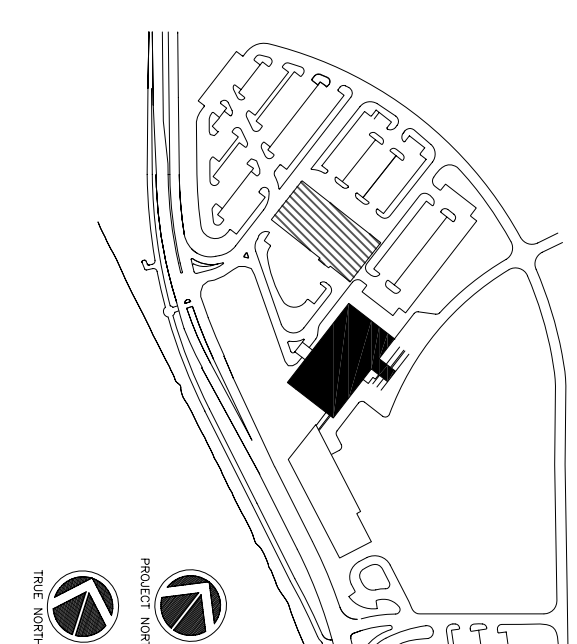


7 STAIR '1' CROSS SECTION
1/4" = 1'-0"



8 STAIR '1' LONGITUDINAL SECTION
1/4" = 1'-0"

NOTE: PROVIDE NON-SLIP AGGREGATE FINISH TO ALL STAIR LANDING, PLATFORM, & STAIR TREADS.



Consultant
OHL ENGINEER
OHL ENGINEER Associates, Inc.
278 Main Street, Suite 806
Providence, Rhode Island 02903
Phone: (401) 772-1121
Fax: (401) 879-0886

Consultant
SMART ARCHITECT/STRUCTURAL ENGINEER
144 Fore Street P.O. Box 618
Providence, Rhode Island 02903
Phone: (401) 772-3846
Fax: (401) 772-1070

Consultant
MECHANICAL/ELECTRICAL ENGINEER
Burd, Roe & Athans Consulting Engineers, LLC
311 Kessell Street, Charles
Woburn, MA 02472-5789
Phone: (617) 224-5116
Fax: (617) 224-5139

Consultant
EQUIPMENT PLANNING
David Burton & Associates
1000 North Main Street, Suite 200
Portland, Tennessee 37087
Phone: (615) 424-4444
Fax: (615) 376-3114

Consultant
CONSTRUCTION MANAGER
7 Jackson Walkway
Providence, Rhode Island 02903
Phone: (401) 458-5516
Fax: (401) 458-5516

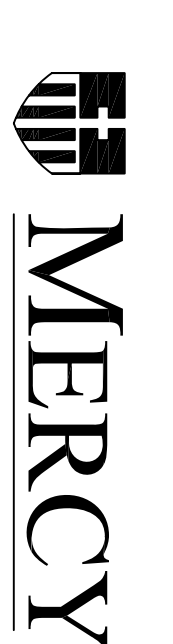
Consultant
FOOD SERVICE
Food Service Systems, LLC
1808 West End Ave, Suite 1400
Providence, Rhode Island 02903
Phone: (615) 321-5591
Fax: (615) 321-5689

10.0.06 CORE & SHELL ISSUED FOR CONSTRUCTION
Drawn By: MAF/JUL/CLB/CLV/LMS
Scale: AS NOTED

Francis
Caulfman

Foley
Hoffmann

Mercy Health
System of Maine
FORE RIVER SHORT
STAY HOSPITAL



Project Number: F05-4898
Drawing Title and Number: Stair '1' Plan and Sections
A4.02