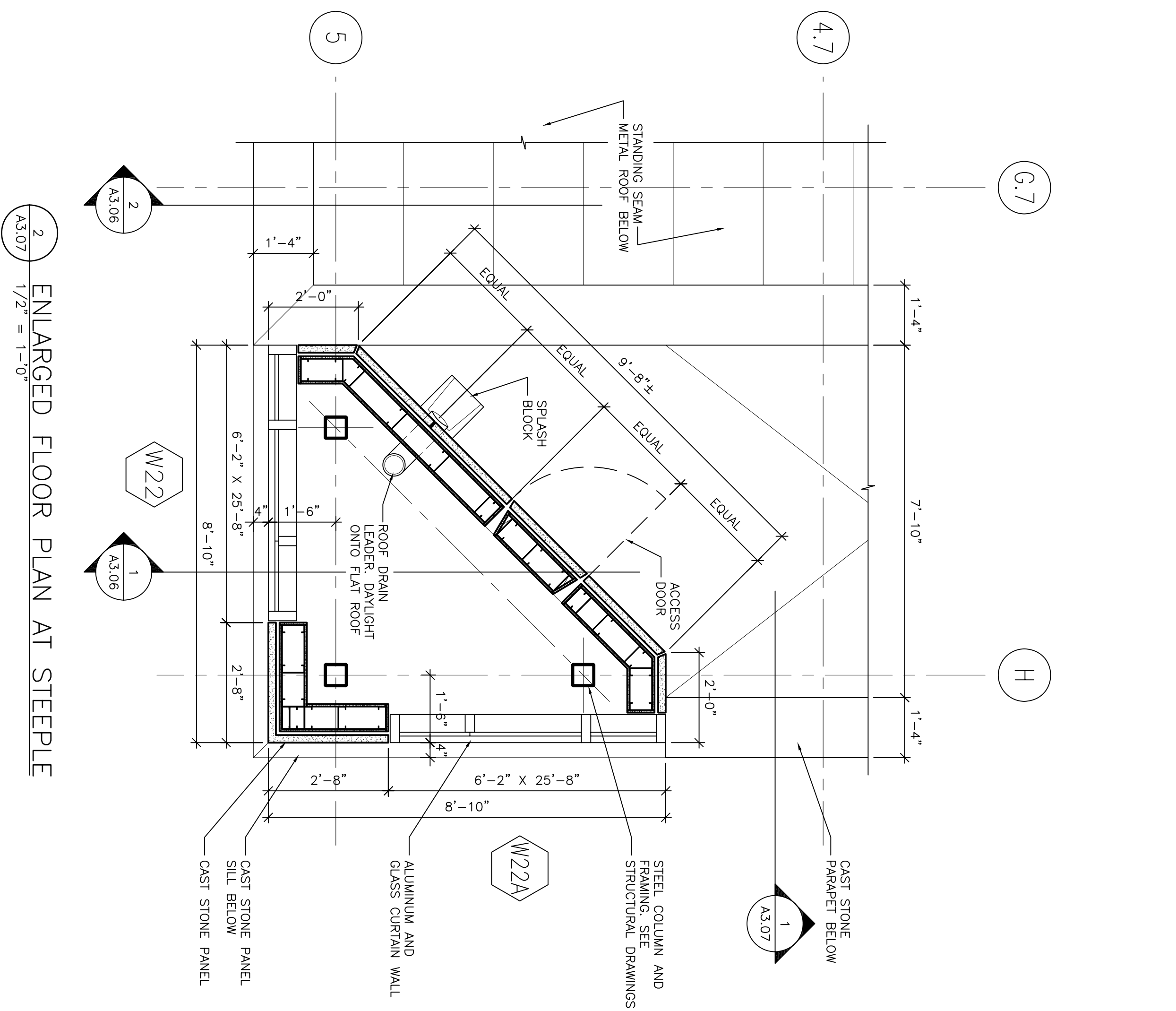
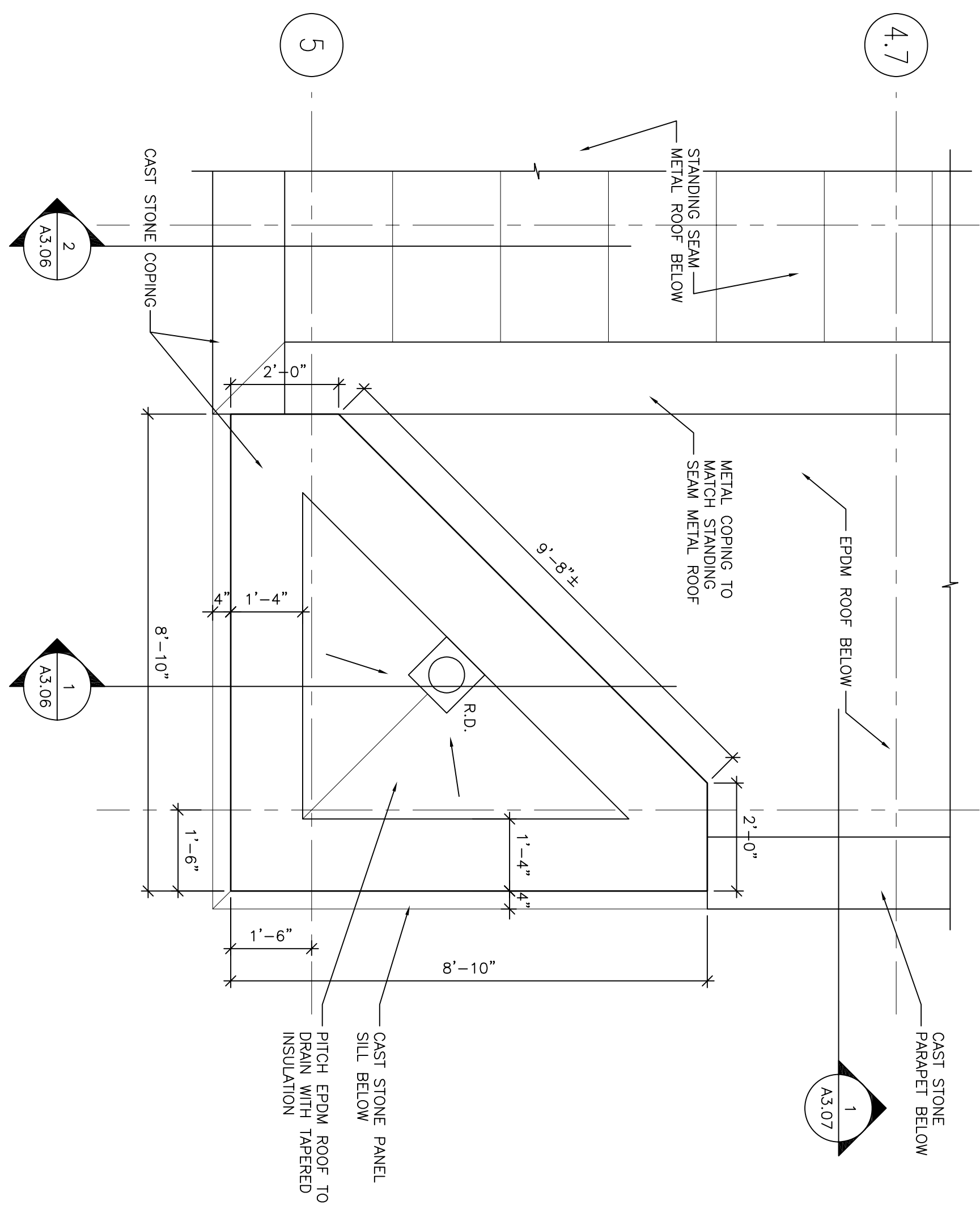


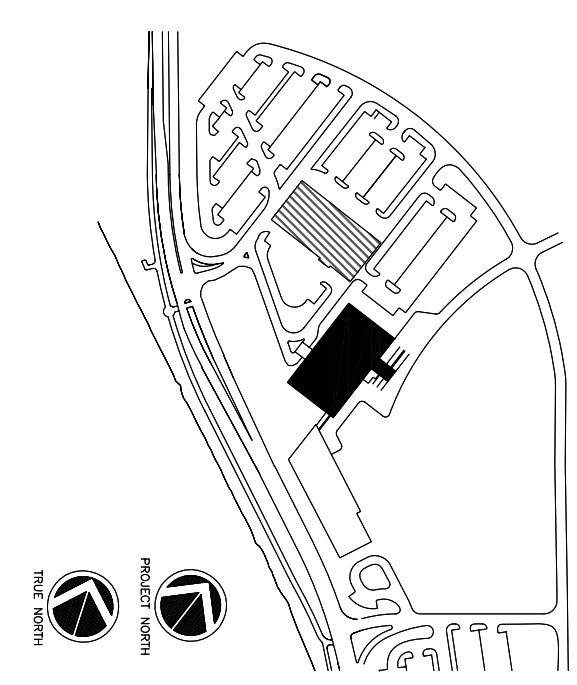
1 WALL SECTION  
1/4" = 1'-0"



2 ENLARGED FLOOR PLAN AT STEEPLE  
1/2" = 1'-0"



3 ENLARGED ROOF PLAN AT STEEPLE  
1/2" = 1'-0"



Revisions

Consultant:  
CUL ENGINEERS Associates, Inc.  
778 Main Street, Suite 806  
Providence, Rhode Island 02903  
Phone: (401) 772-1121  
Fax: (401) 879-0886

Consultant:  
SMART ARCHITECT/STRUCTURAL ENGINEER  
144 Fore Street P.O. Box 618  
Providence, Rhode Island 02903  
Phone: (401) 772-3846  
Fax: (401) 772-1070

Consultant:  
MECHANICAL/ELECTRICAL ENGINEER  
Burd, Roe & Athous Consulting Engineers, LLC  
311 Arsenal Street, Charles  
Woburn, MA 02472-5789  
Phone: (617) 235-1100  
Fax: 617.924.9339

Consultant:  
EQUIPMENT PLANNING  
Ergo Motion & Associates  
10000 Highway 100  
Franklin, Tennessee 37067  
Phone: (615) 452-5000  
Fax: (615) 376-3114

Consultant:  
CONSTRUCTION MANAGER  
7 Jackson Walkway  
Providence, Rhode Island 02903  
Phone: (401) 458-5516  
Fax: (401) 458-5516

Consultant:  
FOOT SERVICES  
Rochester, New York  
1808 West End Ave, Suite 1400  
Providence, Rhode Island 02903  
Phone: (615) 321-5591  
Fax: (615) 321-5689

Date: CORE & SHELL ISSUED  
10.02.06 FOR CONSTRUCTION  
Drawn By: MAF/JUL/CJB/CLU/LMS  
Scale: AS NOTED

Francis  
Caulfman

Foley  
Hoffmann

Project Title:  
Mercy Health  
System of Maine  
FORE RIVER SHORT  
STAY HOSPITAL



Project Number:  
F05-4898  
Drawing Title and Number:  
WALL SECTION AND  
ENLARGED PLANS

A3.07