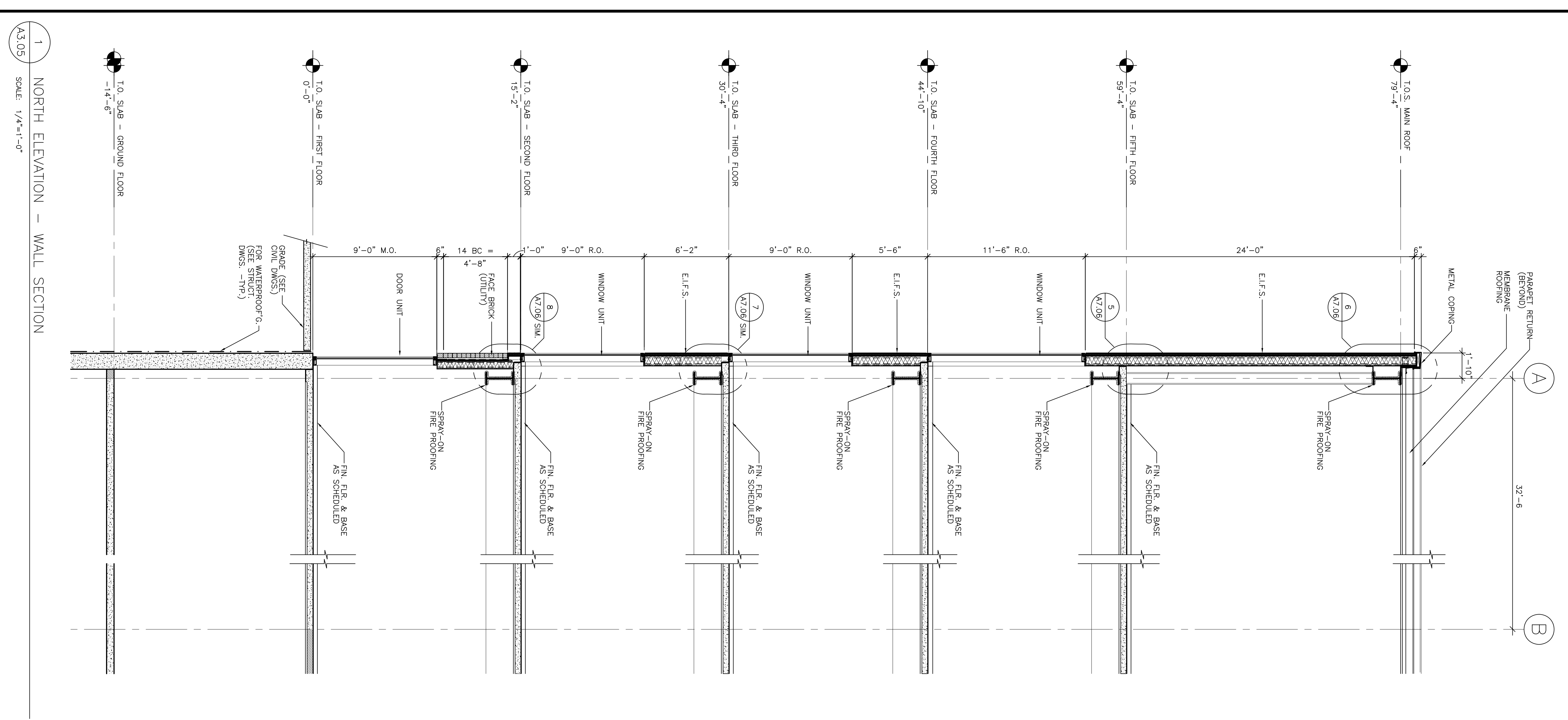
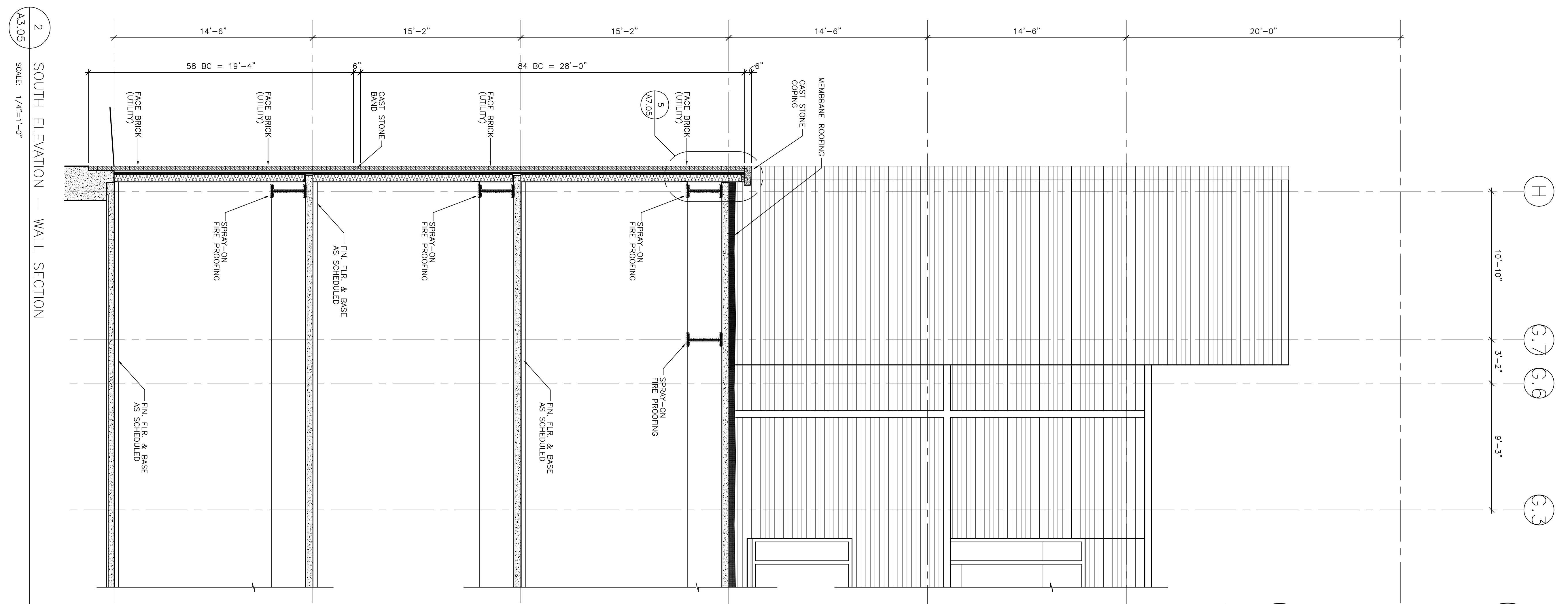


3 DETAIL @ FND. WALL
SCALE: 3/4"=1'-0"



1 NORTH ELEVATION - WALL SECTION
SCALE: 1/4"=1'-0"



2 SOUTH ELEVATION - WALL SECTION
SCALE: 1/4"=1'-0"

Consultant
CIVIL ENGINEER
 CIVIL ENGINEER Associates, Inc.
 778 Main Street, Suite 806
 Portland, Tennessee 37087
 Phone: (607) 772-1121
 Fax: (607) 879-0886

Consultant
MECHANICAL/ELECTRICAL ENGINEER
 Burt, Roe & Atkins Consulting Engineers, LLC
 144 Fore Street P.O. Box 618
 Portland, Tennessee 37087
 Phone: (607) 772-3846
 Fax: (607) 772-1070

Consultant
EQUIPMENT PLANNING
 Greg Burton & Associates
 1000 West End Ave, Suite 1400
 Franklin, Tennessee 37067
 Phone: (615) 452-1100
 Fax: (615) 376-3114

Consultant
CONSTRUCTION MANAGER
 Construction Management Group
 7 Jackson Walkway
 Providence, Rhode Island 02903
 Phone: (401) 458-5516
 Fax: (401) 458-5516

Consultant
ARCHITECT
 Francis Hoffmann Architects Ltd.
 2130 Acorn Street
 Philadelphia, PA 19103
 Phone: (215) 968-8250

Client
MERCY
 Mercy Health
 System of Maine
 FORE RIVER SHORT
 STAY HOSPITAL

Project Title
 Fore River Short Stay Hospital

Project Number
 F05-4898

Drawing Title and Number
 Wall Sections
A3.05

It is the responsibility of the Construction Manager/General Contractor and all subcontractors to ensure that all work is done in accordance with the contract documents and all applicable laws and regulations. The Consultant's role is limited to providing professional services as defined in the contract documents. The Consultant does not warrant, represent or guarantee the accuracy or completeness of the information provided by the client or other sources. The Consultant's liability is limited to the amount of the fee paid to the Consultant. The Consultant's services are not intended to constitute an insurance policy. The Consultant's services are not intended to constitute a warranty. The Consultant's services are not intended to constitute a contract. The Consultant's services are not intended to constitute a representation or warranty. The Consultant's services are not intended to constitute a contract. The Consultant's services are not intended to constitute a representation or warranty.

Date
 10.02.06 CORE & SHELL ISSUED FOR CONSTRUCTION

Drawn By
 MAF/JUL/CLB/CU/LMS

Scale
 AS NOTED

Francis Hoffmann Architects Ltd.
 2130 Acorn Street
 Philadelphia, PA 19103
 Phone: (215) 968-8250

Foley

Caufman

Francis Hoffmann Architects Ltd.
 2130 Acorn Street
 Philadelphia, PA 19103
 Phone: (215) 968-8250

MERCY