

Consultant
 OML ENGINEERS Associates, Inc.
 278 Main Street, Suite 806
 Providence, Rhode Island 02903
 Phone: (401) 772-1121
 Fax: (401) 879-0886

Consultant
 MECHANICAL/ELECTRICAL ENGINEER
 Bird, Roe & Athans Consulting Engineers, LLC
 144 Fore Street P.O. Box 618
 Providence, Rhode Island 02903
 Phone: (401) 772-1070
 Fax: (401) 772-1070

Consultant
 EQUIPMENT PLANNING
 Long Burton & Associates
 144 Fore Street P.O. Box 618
 Providence, Rhode Island 02903
 Phone: (401) 772-1070
 Fax: (401) 772-1070

Consultant
 CONSTRUCTION MANAGER
 Providence Rhode Island 02903
 7 Jackson Walkway
 Providence, Rhode Island 02903
 Phone: (401) 458-5516
 Fax: (401) 458-5516

Consultant
 FOOO SERVICE
 1808 West End Ave, Suite 1400
 Providence, Rhode Island 02903
 Phone: (615) 321-5591
 Fax: (615) 321-5689

Consultant
 FRANCIS
 10.02.06 FOR CONSTRUCTION
 MAF/JUL/CLB/CLU/LMS

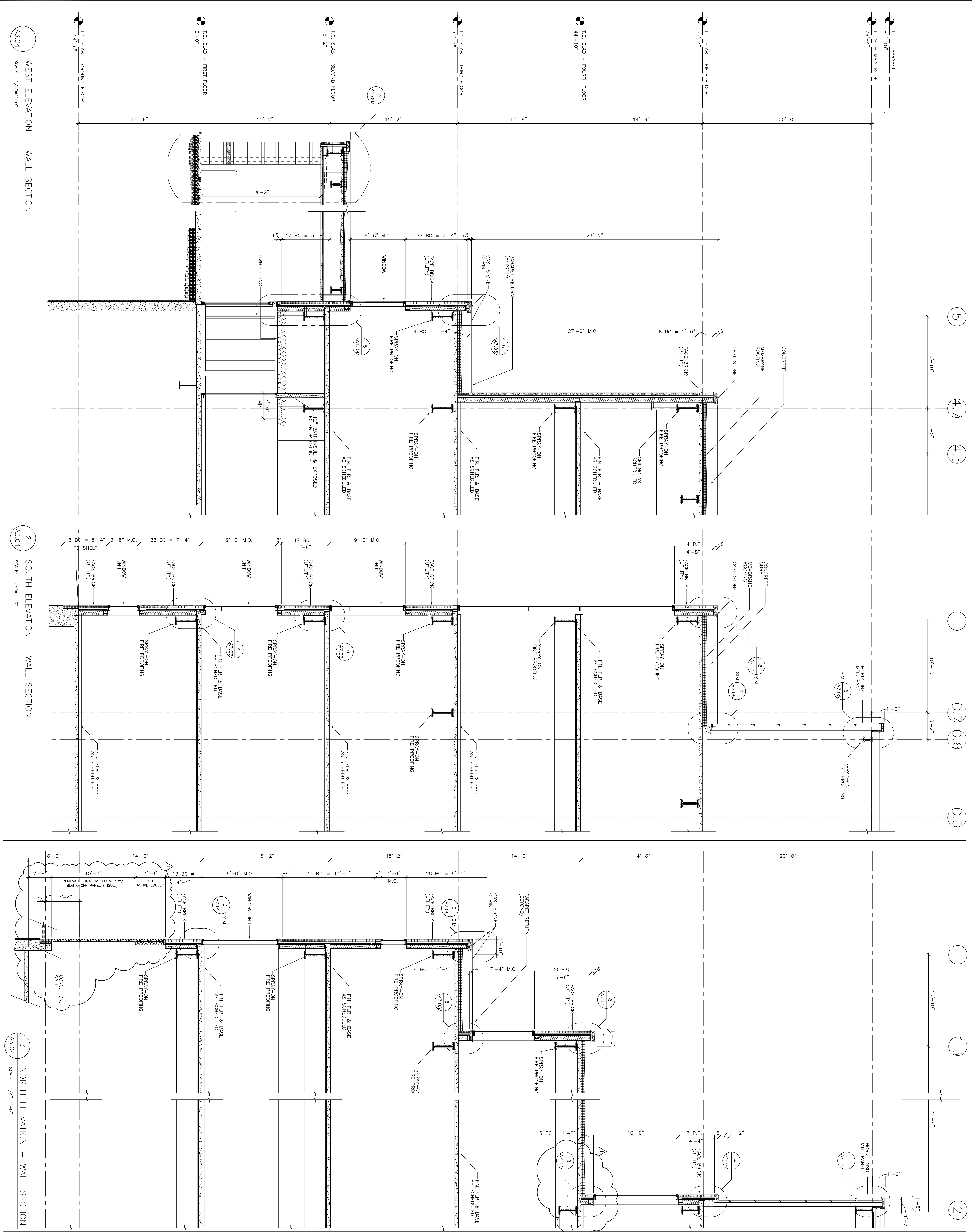
Consultant
 FOLEY
 2130 Acorn Street
 Philadelphia, PA 19103
 Phone: 215-568-8250

Project Title
 Mercy Health
 System of Maine
 FORE RIVER SHORT
 STAY HOSPITAL



Project Number
 F05-4898
 Drawing Title and Number
 Wall Sections

A3.04



1 WEST ELEVATION - WALL SECTION
 SCALE: 1/4"=1'-0"

2 SOUTH ELEVATION - WALL SECTION
 SCALE: 1/4"=1'-0"

3 NORTH ELEVATION - WALL SECTION
 SCALE: 1/4"=1'-0"