

Consultant  
 CIVIL ENGINEER  
 REMISION ASSOCIATES, INC.  
 278 Main Street, Suite 806  
 Providence, Rhode Island 02903  
 Phone: (401) 772-1121  
 Fax: (401) 879-0886

Consultant  
 ARCHITECT/STRUCTURAL ENGINEER  
 SMART  
 144 Fox Street P.O. Box 618  
 Providence, Rhode Island 02903  
 Phone: (401) 772-3846  
 Fax: (401) 772-1070

Consultant  
 MECHANICAL/ELECTRICAL ENGINEER  
 BIRD, ROO & ARTHURS CONSULTING ENGINEERS, LLC  
 311 Assonet Street, Charles  
 Woburn, MA 02472-5789  
 Phone: (617) 221-1100  
 Fax: (617) 221-9339

Consultant  
 EQUIPMENT PLANNING  
 LONG BARTON & ASSOCIATES  
 5880 Northpark Drive  
 Fort Mill, Tennessee 37067  
 Phone: (615) 321-1100  
 Fax: (615) 321-3114

Consultant  
 CONSTRUCTION MANAGER  
 MAF/JUL/CLB/LMS  
 7 Jackson Walkway  
 Providence, Rhode Island 02903  
 Phone: (401) 458-5516  
 Fax: (401) 458-5516

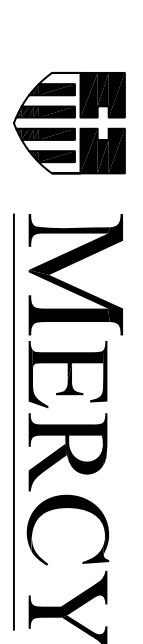
Consultant  
 FLOOR FINISHES  
 FLOOR FINISHES, LLC  
 1808 West End Ave, Suite 1400  
 Providence, Rhode Island 02903  
 Phone: (615) 321-5591  
 Fax: (615) 321-5689

Consultant  
 CORE & SHELL ISSUED  
 10.02.06 FOR CONSTRUCTION  
 Drawn By  
 MAF/JUL/CLB/LMS  
 Scale  
 AS NOTED

Francis  
 Cauffman  
 Foley

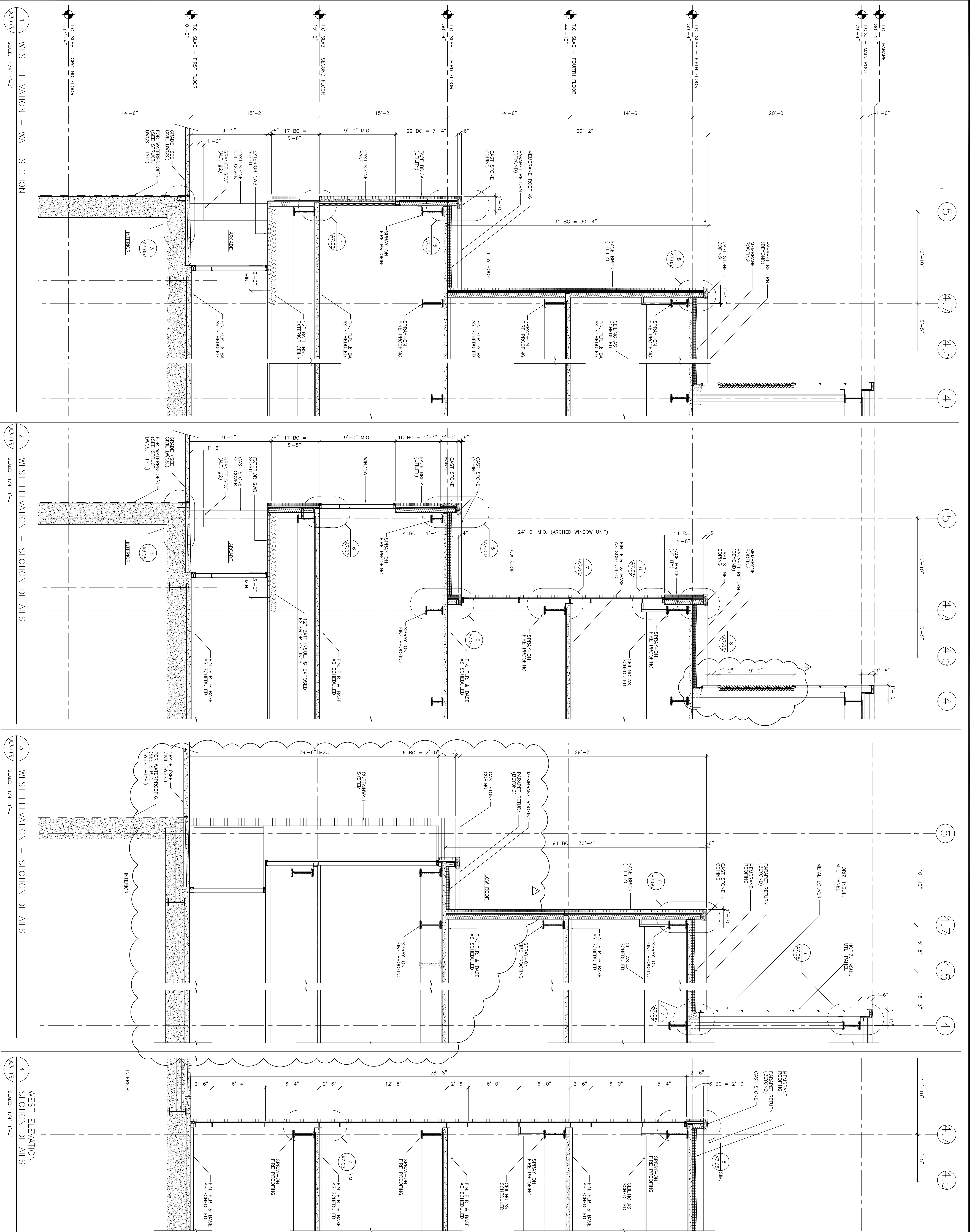
Hoffmann  
 Francis Cauffman  
 Foley Hoffmann  
 Architects Ltd.  
 2120 Acorn Street  
 Philadelphia, PA 19103  
 Phone: (215) 568-8250

Mercy Health  
 System of Maine  
 FORE RIVER SHORT  
 STAY HOSPITAL



Project Number  
 F05-4898  
 Drawing Title and Number  
 Wall Sections

A3.03



1 WEST ELEVATION - WALL SECTION  
 SCALE: 1/4"=1'-0"

2 WEST ELEVATION - SECTION DETAILS  
 SCALE: 1/4"=1'-0"

3 WEST ELEVATION - SECTION DETAILS  
 SCALE: 1/4"=1'-0"

4 WEST ELEVATION - SECTION DETAILS  
 SCALE: 1/4"=1'-0"