

Consultant
CIVIL ENGINEER
 Smart/White Engineers, Inc.
 278 Main Street, Suite 806
 Providence, Rhode Island 02903
 Phone: (401) 772-1121
 Fax: (401) 879-0886

Consultant
MECHANICAL/ELECTRICAL ENGINEER
 Bert, Rod, & Athans Consulting Engineers, LLC
 144 Fore Street P.O. Box 618
 Providence, Rhode Island 02903
 Phone: (401) 772-3846
 Fax: (401) 772-1070

Consultant
EQUIPMENT PLANNING
 Gene Burton & Associates
 1000 North Main Street
 Franklin, Tennessee 37067
 Phone: (615) 792-1100
 Fax: (615) 792-3114

Consultant
CONSTRUCTION MANAGER
 The Construction Management Group
 7 Jackson Walkway
 Providence, Rhode Island 02903
 Phone: (401) 458-5516
 Fax: (401) 458-5516

Consultant
ARCHITECT
 Francis Hoffmann Architects Ltd.
 1808 West End Ave. Suite 1400
 Philadelphia, PA 19103
 Phone: (610) 321-5591
 Fax: (610) 321-5689

Consultant
STRUCTURAL ENGINEER
 Hoffmann Architects Ltd.
 1808 West End Ave. Suite 1400
 Philadelphia, PA 19103
 Phone: (610) 321-5591
 Fax: (610) 321-5689

Consultant
MECHANICAL/ELECTRICAL ENGINEER
 Bert, Rod, & Athans Consulting Engineers, LLC
 144 Fore Street P.O. Box 618
 Providence, Rhode Island 02903
 Phone: (401) 772-3846
 Fax: (401) 772-1070

Consultant
EQUIPMENT PLANNING
 Gene Burton & Associates
 1000 North Main Street
 Franklin, Tennessee 37067
 Phone: (615) 792-1100
 Fax: (615) 792-3114

Consultant
CONSTRUCTION MANAGER
 The Construction Management Group
 7 Jackson Walkway
 Providence, Rhode Island 02903
 Phone: (401) 458-5516
 Fax: (401) 458-5516

Consultant
ARCHITECT
 Francis Hoffmann Architects Ltd.
 1808 West End Ave. Suite 1400
 Philadelphia, PA 19103
 Phone: (610) 321-5591
 Fax: (610) 321-5689

Consultant
STRUCTURAL ENGINEER
 Hoffmann Architects Ltd.
 1808 West End Ave. Suite 1400
 Philadelphia, PA 19103
 Phone: (610) 321-5591
 Fax: (610) 321-5689

Consultant
MECHANICAL/ELECTRICAL ENGINEER
 Bert, Rod, & Athans Consulting Engineers, LLC
 144 Fore Street P.O. Box 618
 Providence, Rhode Island 02903
 Phone: (401) 772-3846
 Fax: (401) 772-1070

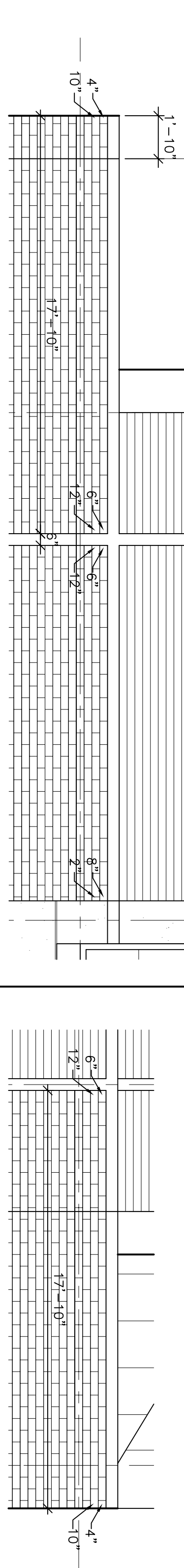
Consultant
EQUIPMENT PLANNING
 Gene Burton & Associates
 1000 North Main Street
 Franklin, Tennessee 37067
 Phone: (615) 792-1100
 Fax: (615) 792-3114

Consultant
CONSTRUCTION MANAGER
 The Construction Management Group
 7 Jackson Walkway
 Providence, Rhode Island 02903
 Phone: (401) 458-5516
 Fax: (401) 458-5516

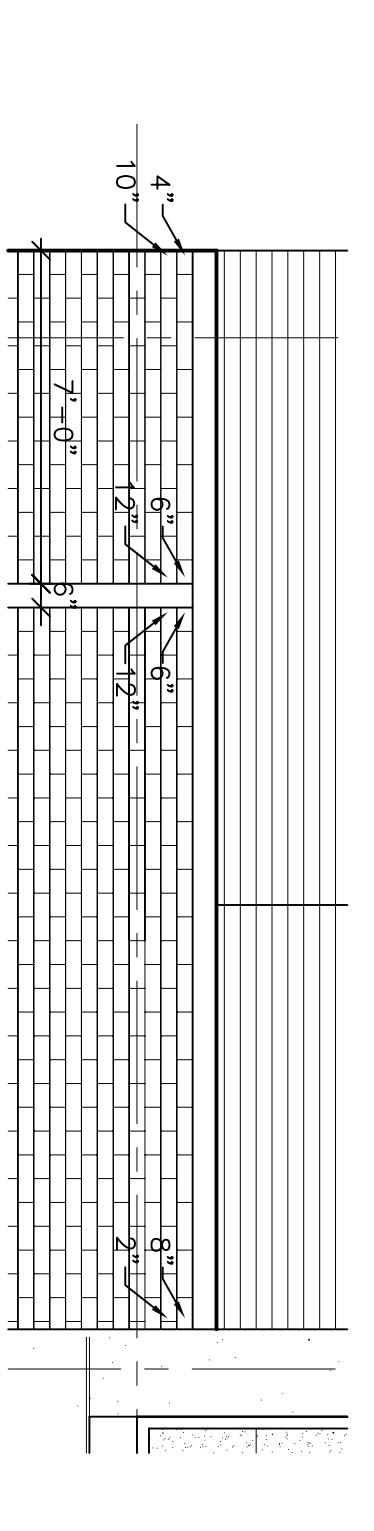
Consultant
ARCHITECT
 Francis Hoffmann Architects Ltd.
 1808 West End Ave. Suite 1400
 Philadelphia, PA 19103
 Phone: (610) 321-5591
 Fax: (610) 321-5689

Consultant
STRUCTURAL ENGINEER
 Hoffmann Architects Ltd.
 1808 West End Ave. Suite 1400
 Philadelphia, PA 19103
 Phone: (610) 321-5591
 Fax: (610) 321-5689

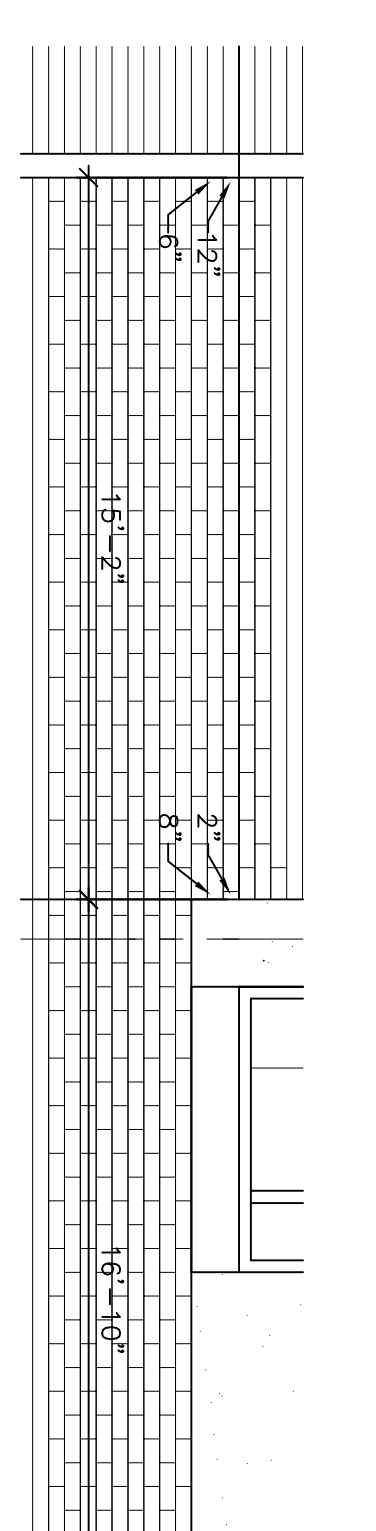
4 HORIZONTAL COURSING DETAIL - NORTH ELEVATION
 SCALE: 1/4"=1'-0"



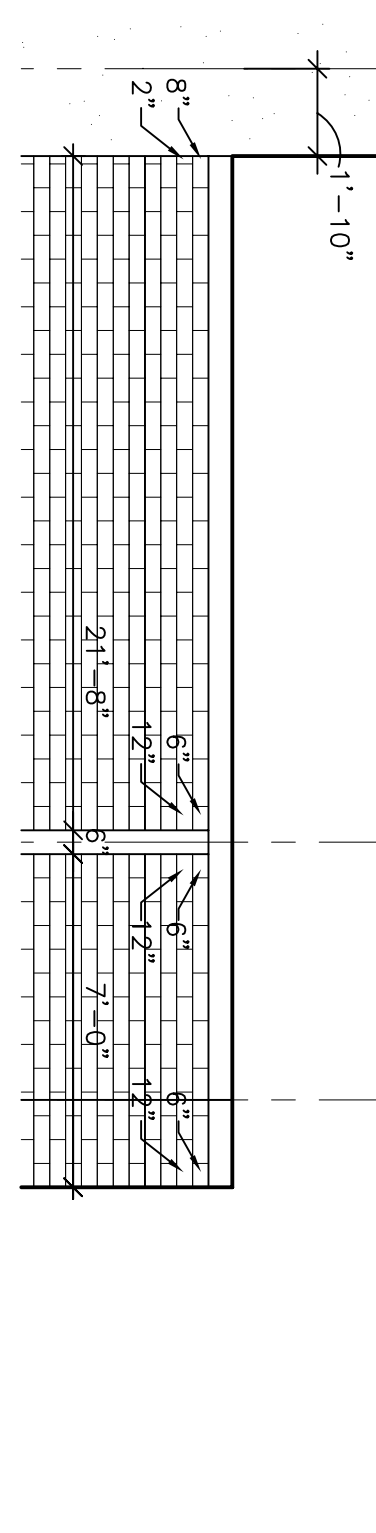
3 HORIZONTAL COURSING DETAIL - NORTH ELEVATION
 SCALE: 1/4"=1'-0"



2 HORIZONTAL COURSING DETAIL - NORTH ELEVATION
 SCALE: 1/4"=1'-0"

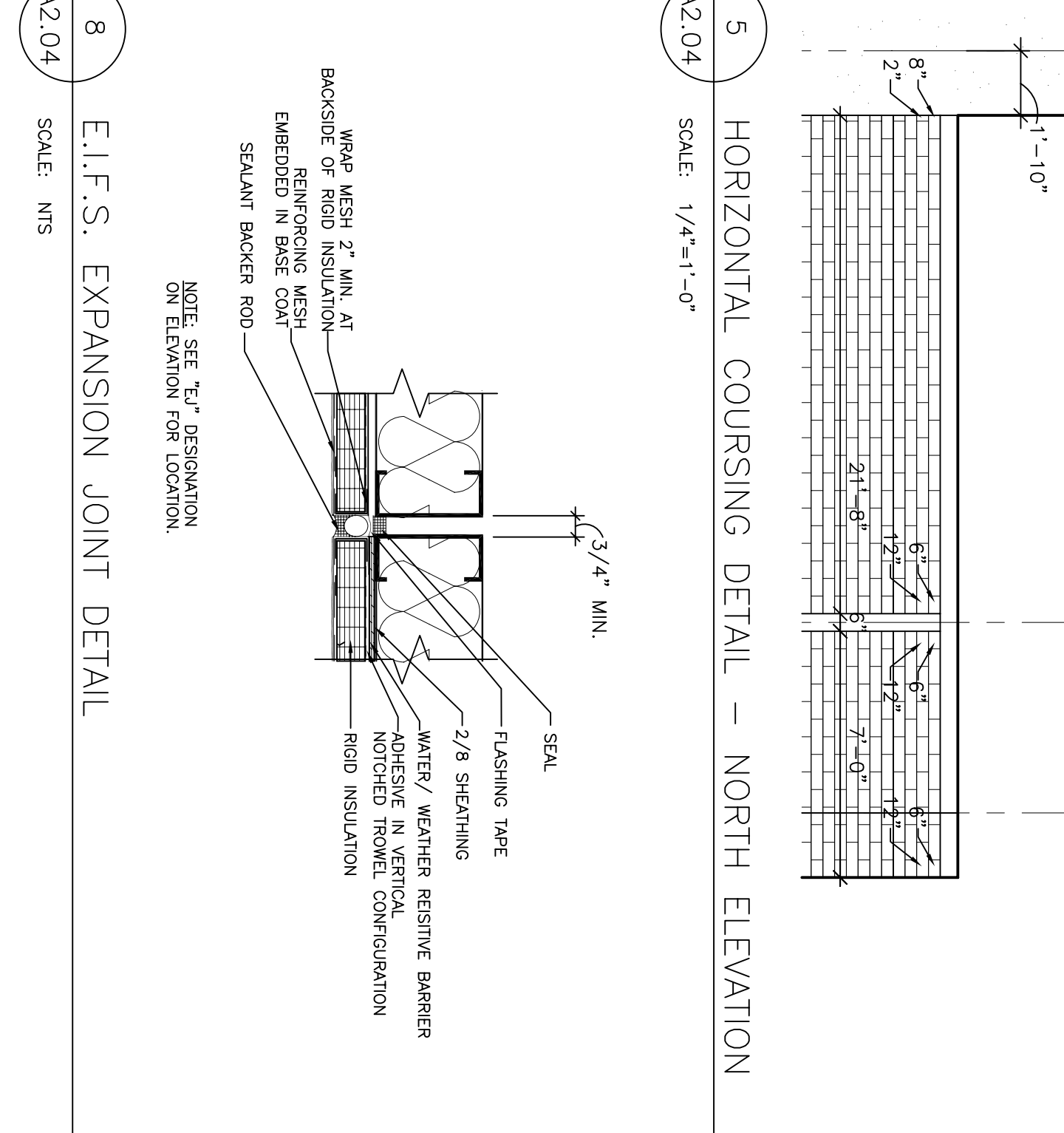


6 HORIZONTAL COURSING DETAIL - NORTH ELEVATION
 SCALE: 1/4"=1'-0"



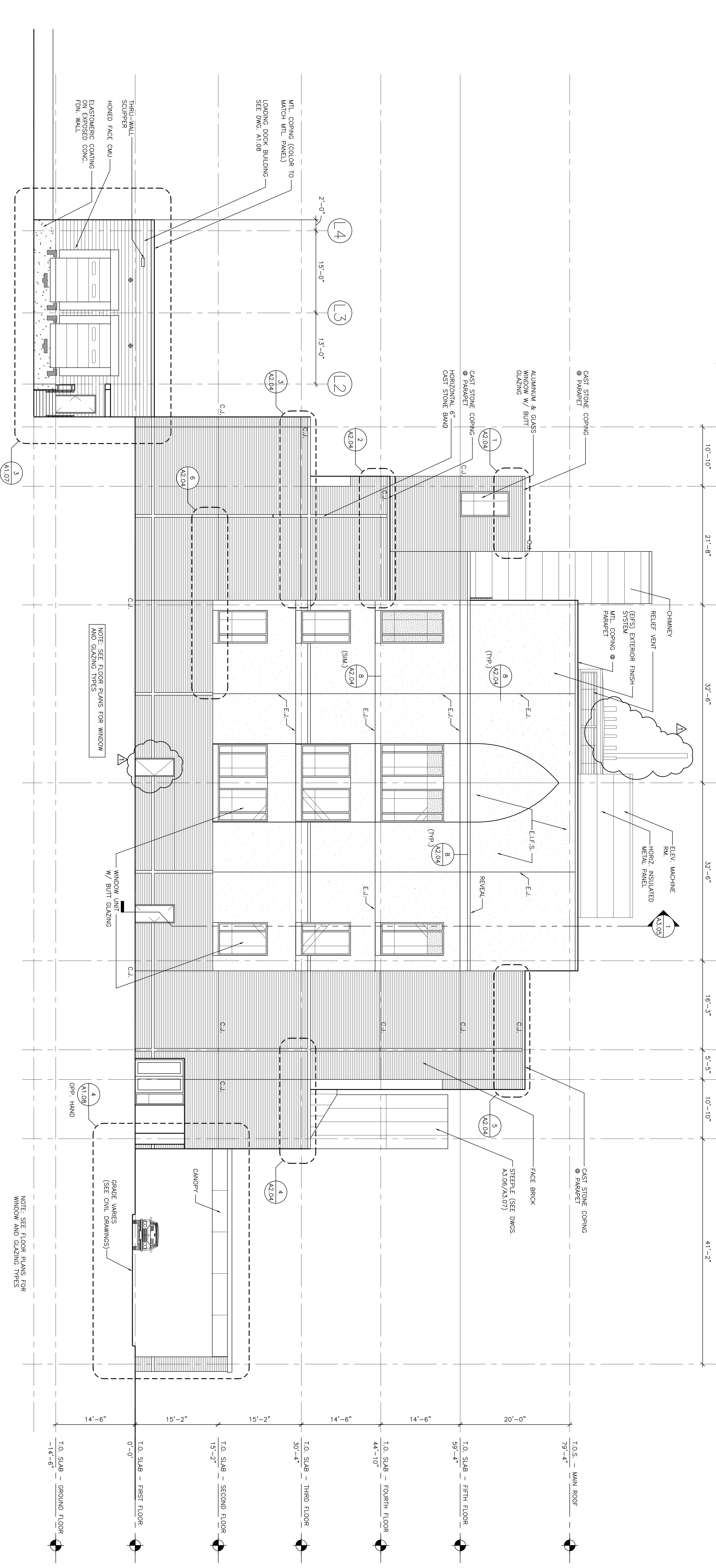
5 HORIZONTAL COURSING DETAIL - NORTH ELEVATION
 SCALE: 1/4"=1'-0"

1 HORIZONTAL COURSING DETAIL - NORTH ELEVATION
 SCALE: 1/4"=1'-0"



8 E.I.F.S. EXPANSION JOINT DETAIL
 SCALE: NTS

7 NORTH ELEVATION
 SCALE: 1/8"=1'-0"



Project Number
 F05-4898

Drawing Title and Number
 North Building Elevations
 & Coursing Details

A2.04

MERCY

Mercy Health
 System of Maine
 FORE RIVER SHORT
 STAY HOSPITAL

Francis Hoffmann
 Architects Ltd.
 2130 Arch Street
 Philadelphia, PA 19103
 Phone: (215) 568-8250