

Consultant  
 CIVIL ENGINEER  
 Rensselaer Associates, Inc.  
 278 Main Street, Suite 806  
 Troy, NY 12180  
 Phone: (518) 735-1121  
 Fax: (518) 735-1121

Consultant  
 MECHANICAL/ELECTRICAL/STRUCTURAL ENGINEER  
 SMART/CAE ARCHITECT/STRUCTURAL ENGINEER  
 144 Fore Street P.O. Box 618  
 Portland, ME 04101  
 Phone: (207) 772-3846  
 Fax: (207) 772-1070

Consultant  
 MECHANICAL/ELECTRICAL ENGINEER  
 Burt, Roe & Atkins Consulting Engineers, LLC  
 311 Arsenal Street  
 Worcester, MA 02212-5789  
 Phone: (508) 853-1118  
 Fax: (508) 853-1118

Consultant  
 EQUIPMENT PLANNING  
 Long Burton & Associates  
 1885 Burton & Associates Drive  
 Franklin, Tennessee 37067  
 Phone: (615) 221-5599  
 Fax: (615) 221-5599

Consultant  
 CONSTRUCTION MANAGER  
 Construction Management Group  
 7 Jackson Walkway  
 Providence, Rhode Island 02903  
 Phone: (401) 458-5516  
 Fax: (401) 458-5516

Consultant  
 FLOOR FINISHES, LLC  
 1808 West End Ave, Suite 1400  
 Nashville, Tennessee 37203  
 Phone: (615) 321-5591  
 Fax: (615) 321-5689

Contractor  
 MAF/ML/CLB/CLU/LMS  
 AS NOTED

Date  
 10.02.06  
 FOR CONSTRUCTION

Drawn By  
 MAF/ML/CLB/CLU/LMS

Scale  
 AS NOTED

Francis

Caufman

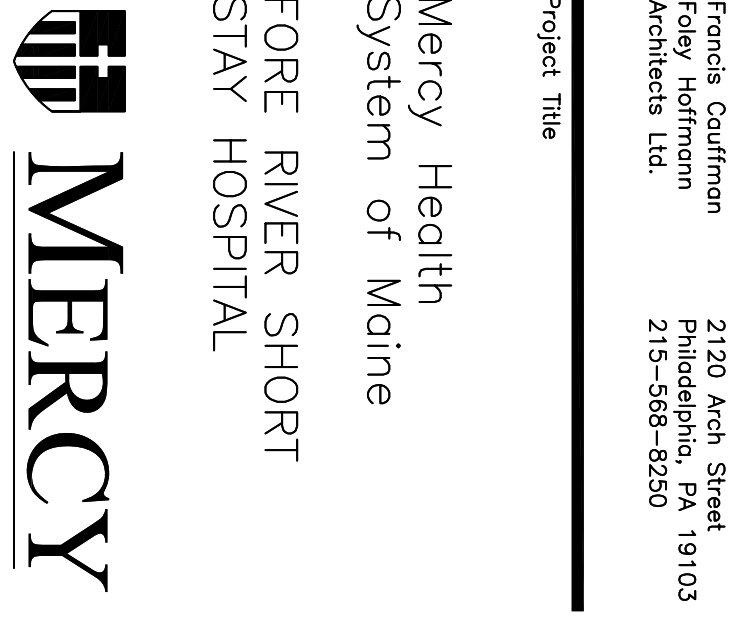
Roley

Hoffmann

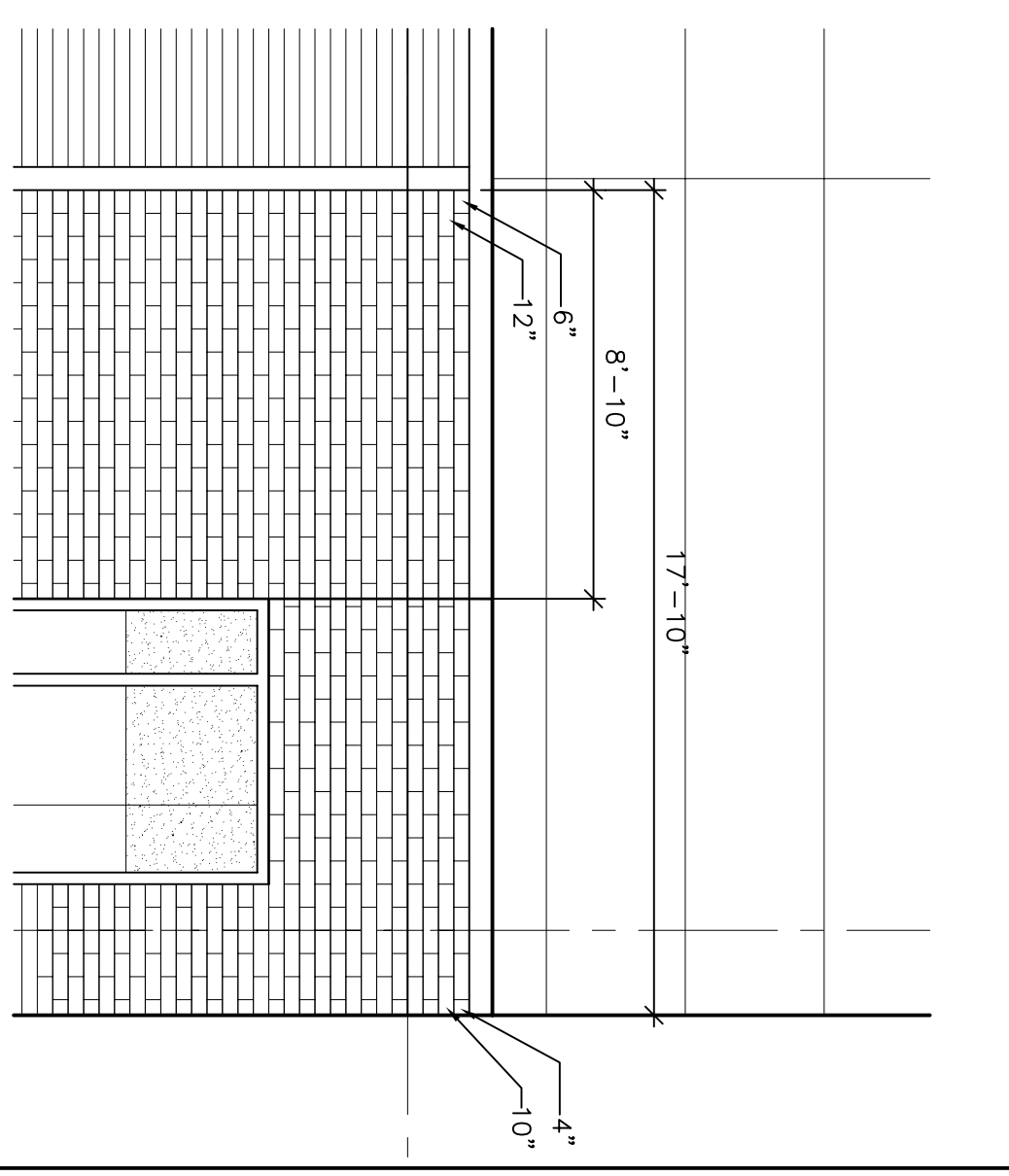
Francis Cauffman  
 Foley Hoffmann  
 Architects Ltd.  
 2120 Acacia Street  
 Philadelphia, PA 19103  
 Phone: 215-568-8250

Project Title  
 Mercy Health  
 System of Maine  
 FORE RIVER SHORT  
 STAY HOSPITAL

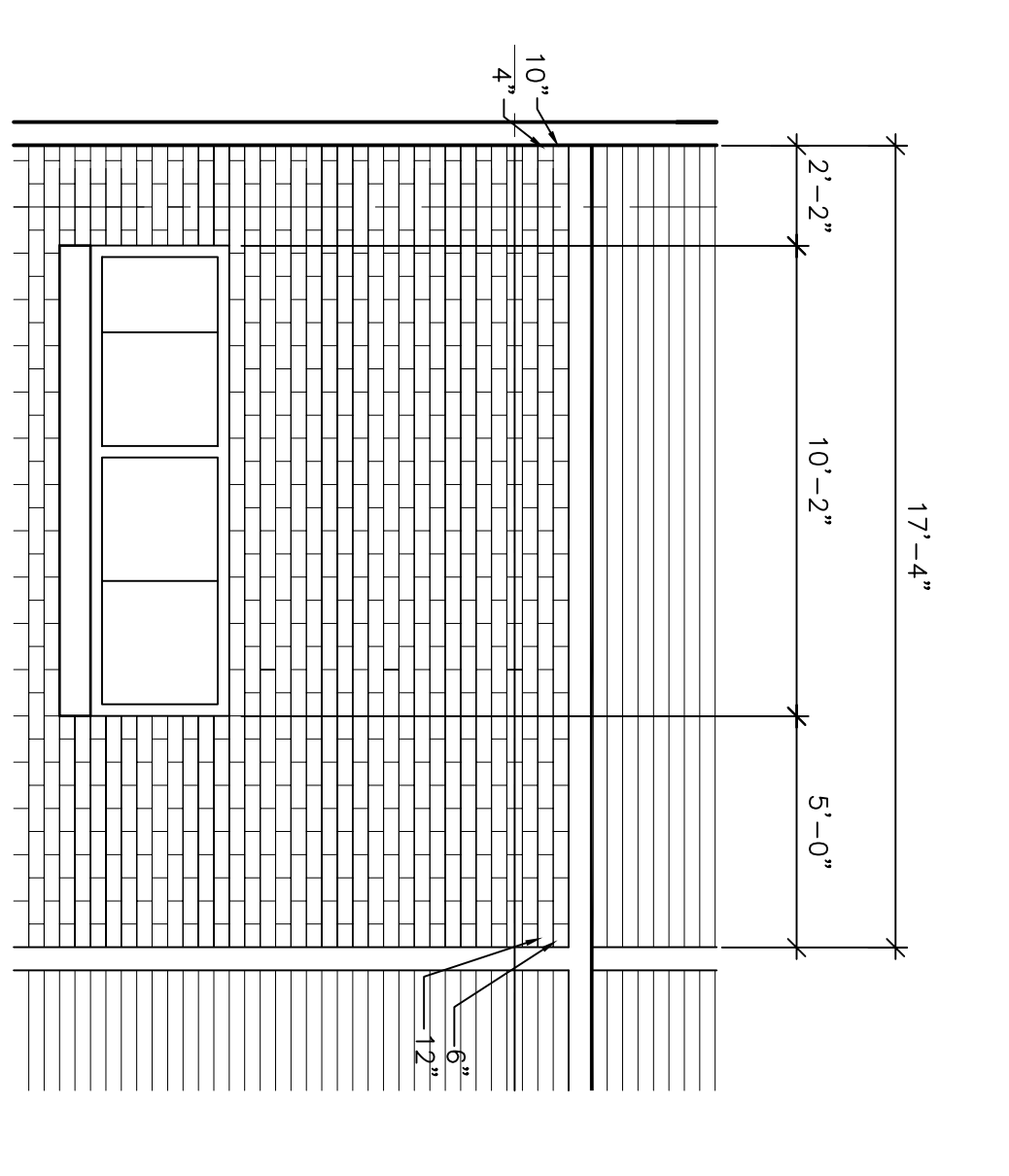
Project Number  
 F05-4898



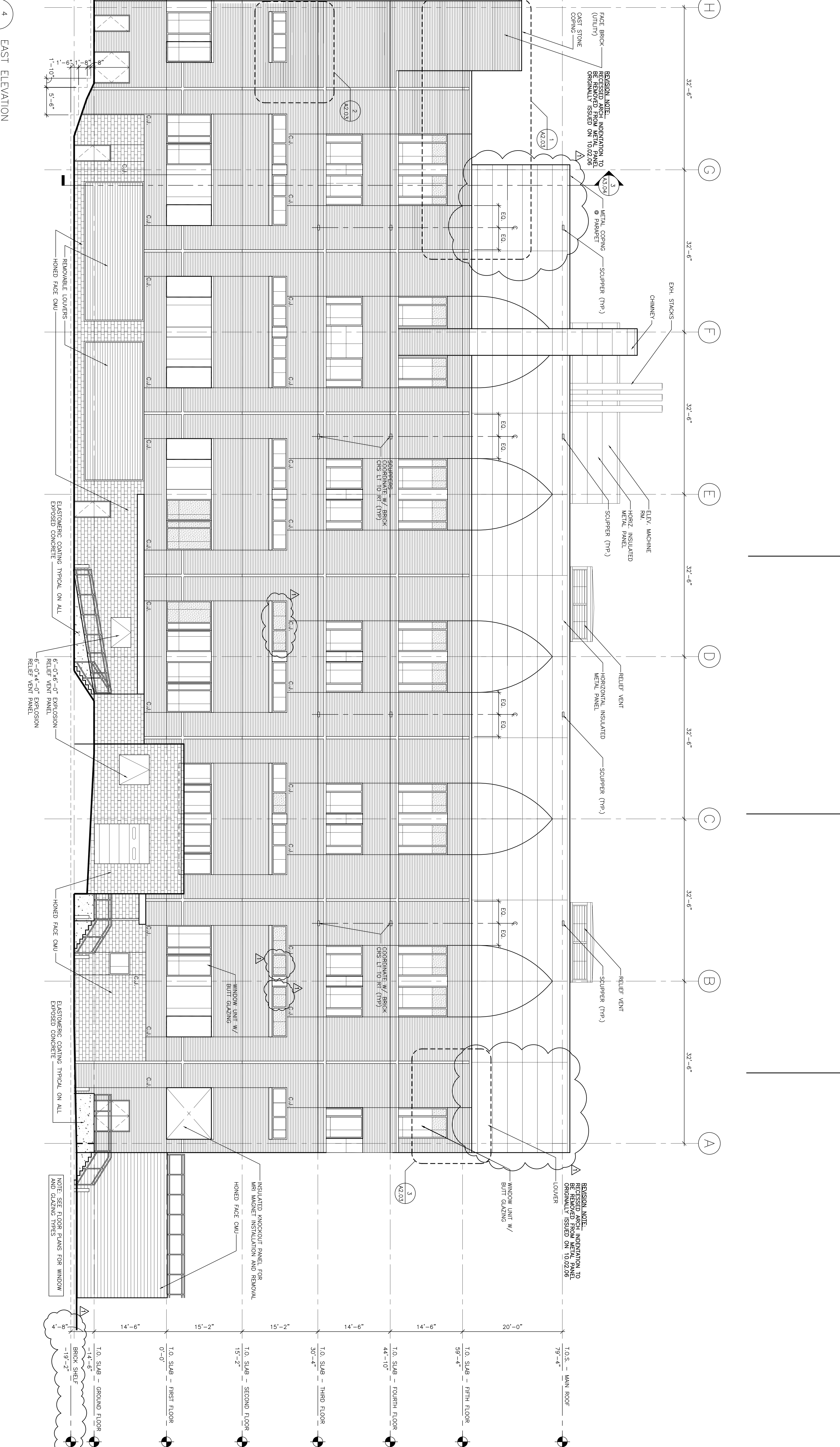
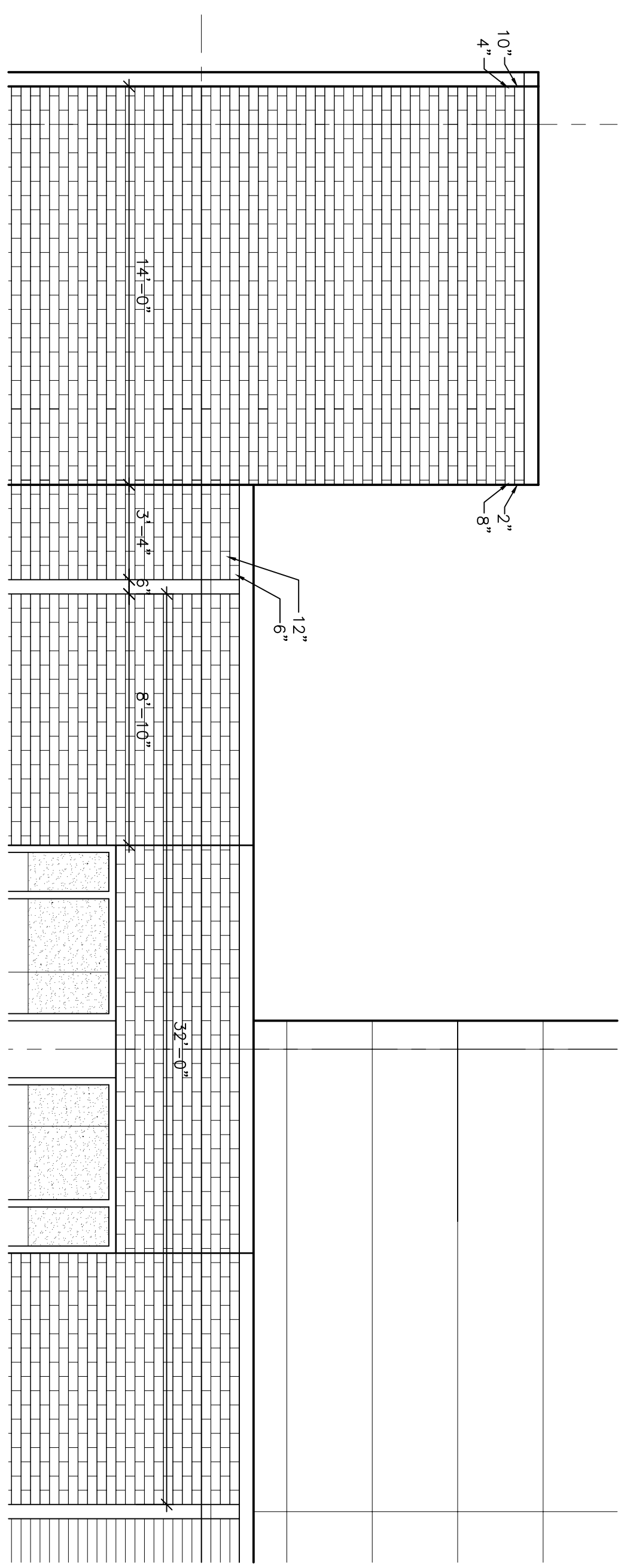
3 HORIZONTAL COURSING DETAIL - PARTIAL EAST ELEVATION  
 SCALE: 1/4"=1'-0"



2 HORIZONTAL COURSING DETAIL - PARTIAL EAST ELEVATION  
 SCALE: 1/4"=1'-0"



1 HORIZONTAL COURSING DETAIL - PARTIAL EAST ELEVATION  
 SCALE: 1/4"=1'-0"



4 EAST ELEVATION  
 SCALE: 1/8"=1'-0"

A2.03

A2.03

Drawing Title and Number  
 East Building Elevations  
 & Coursing Details