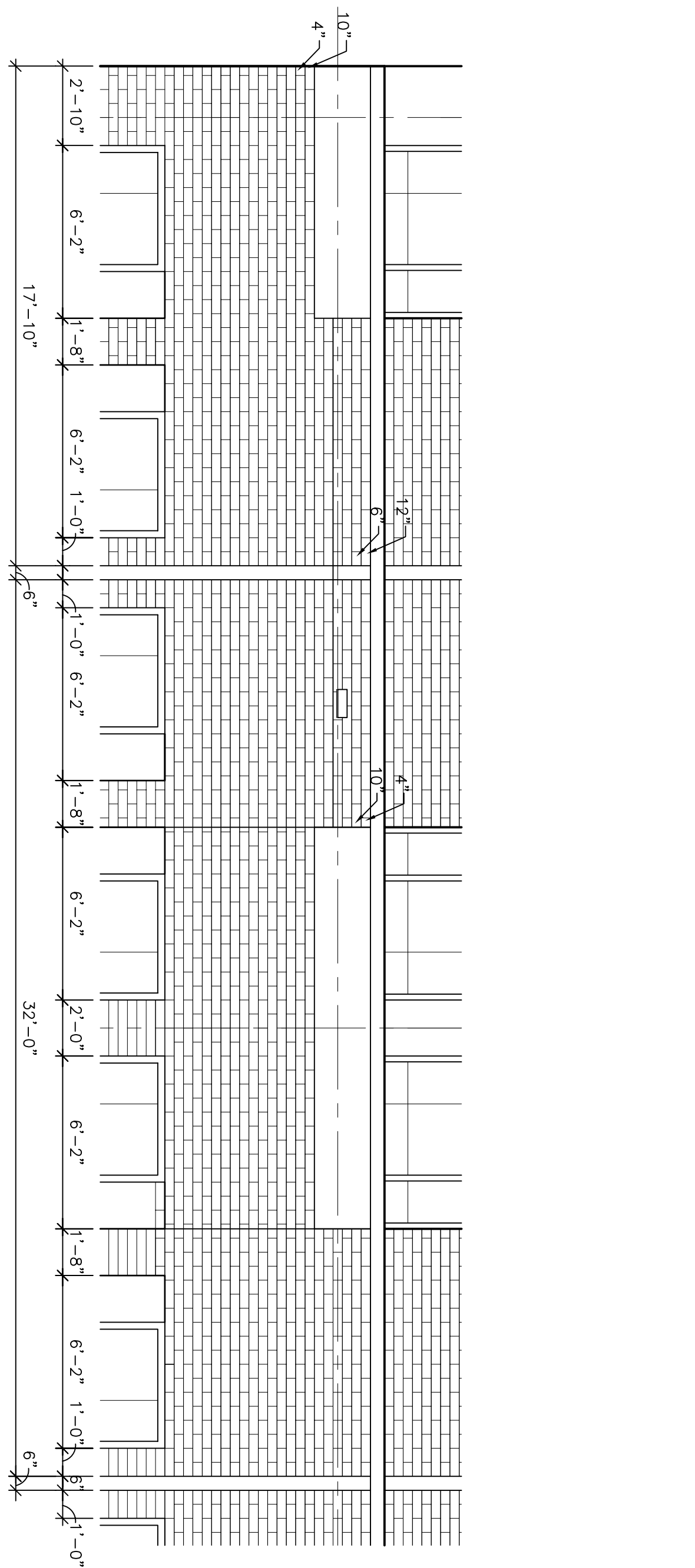
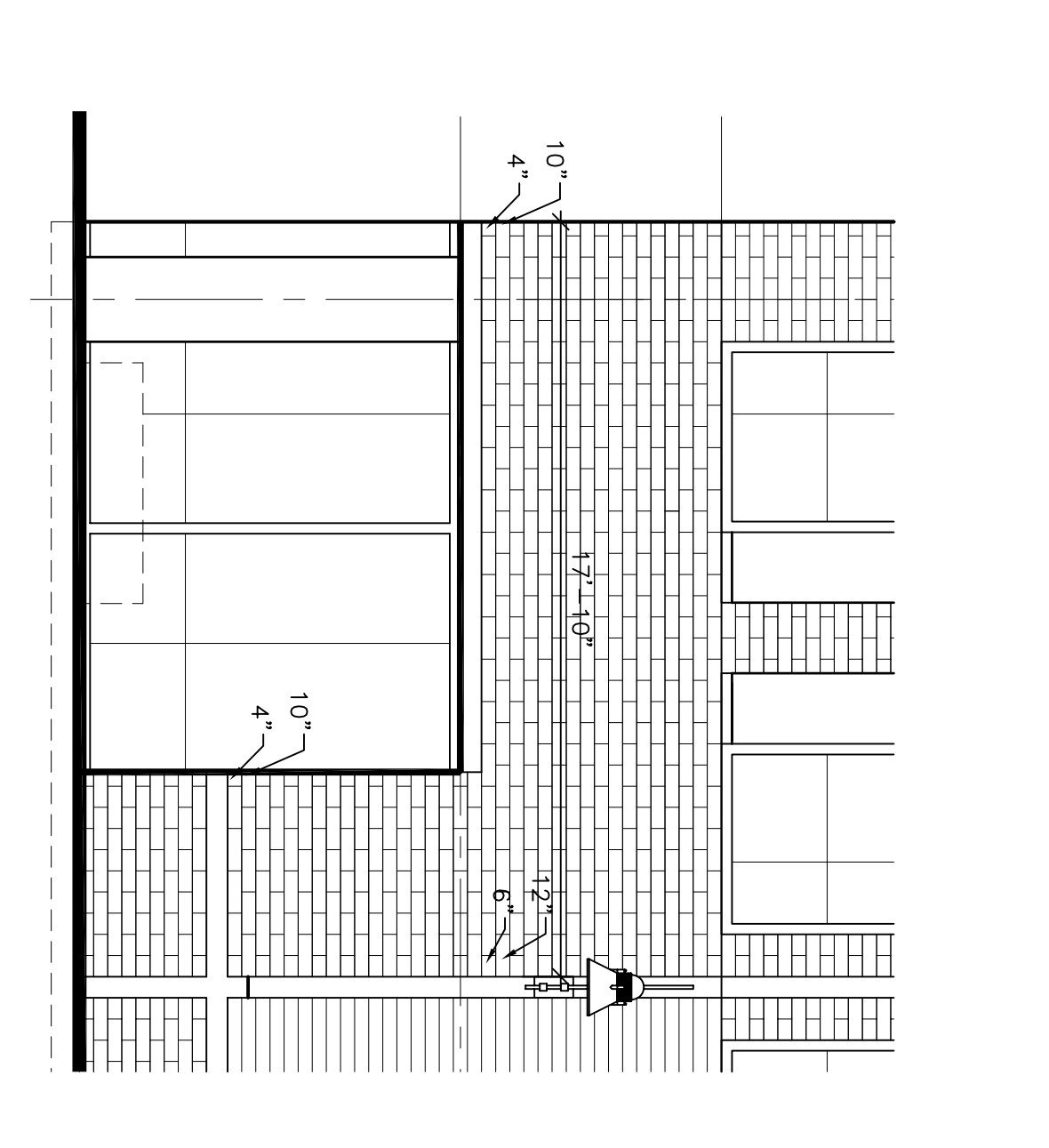


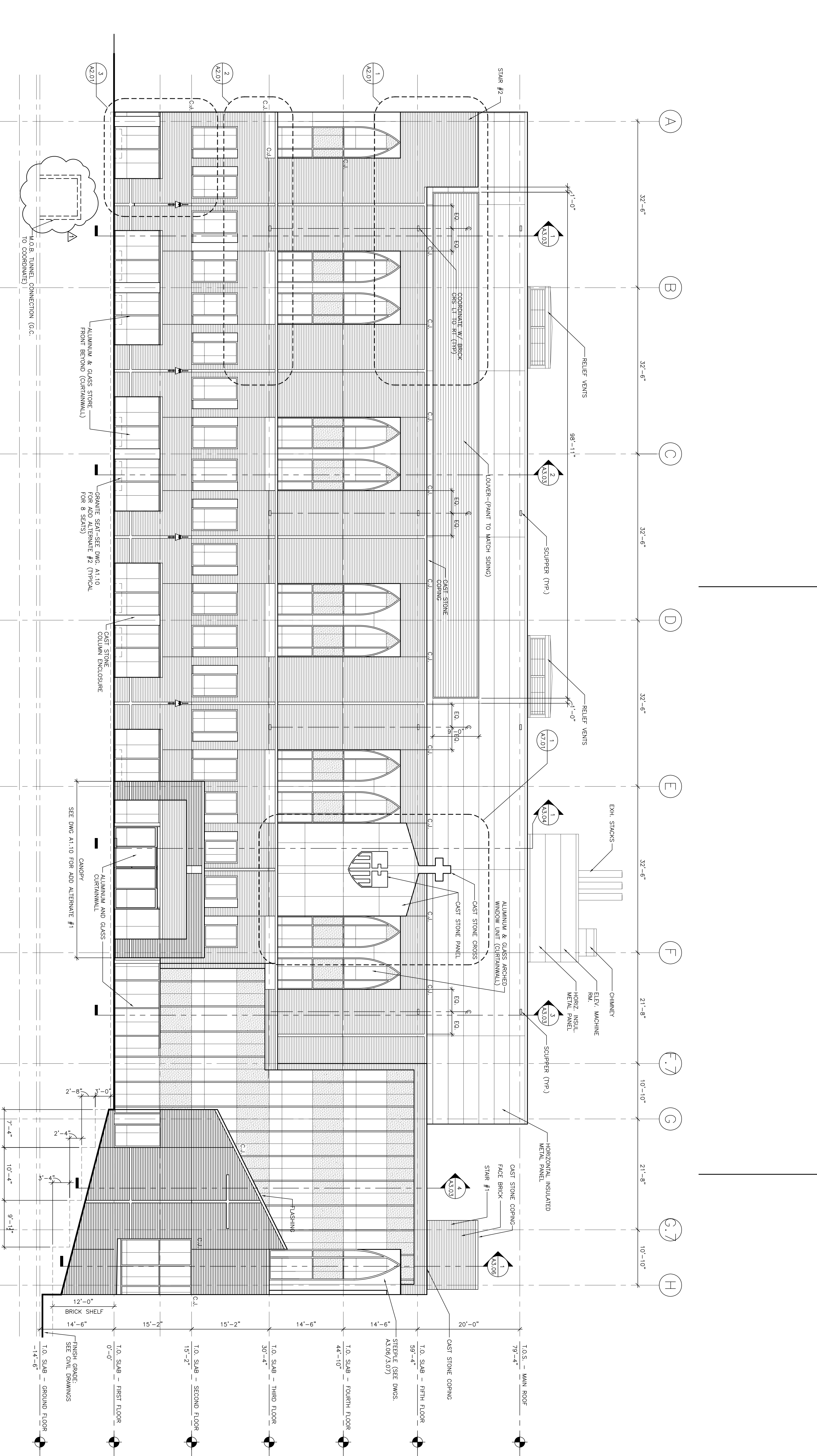
1 HORIZONTAL COURSING DETAIL - PARTIAL WEST ELEVATION  
SCALE: 1/4"=1'-0"



2 HORIZONTAL COURSING DETAIL - PARTIAL WEST ELEVATION  
SCALE: 1/4"=1'-0"



3 HORIZONTAL COURSING DETAIL - PARTIAL WEST ELEVATION  
SCALE: 1/4"=1'-0"



4 WEST ELEVATION  
SCALE: 1/8"=1'-0"

Revisions  
 ▲ REVISION 11.10.08

Consultant:  
 OHL ENGINEER  
 OHL ENGINEER Associates, Inc.  
 278 Main Street, Suite 806  
 Providence, Rhode Island 02903  
 Phone: (401) 772-1121  
 Fax: (401) 879-0896

Consultant:  
 MECHANICAL/ELECTRICAL ENGINEER  
 Burr, Roe & Atkins Consulting Engineers, LLC  
 144 Fore Street P.O. Box 618  
 Providence, Rhode Island 02903  
 Phone: (401) 772-3846  
 Fax: (401) 772-1070

Consultant:  
 EQUIPMENT PLANNING  
 EBBB Burton & Associates  
 1000 Main Street, Suite 100  
 Providence, Rhode Island 02903  
 Phone: (401) 772-1121  
 Fax: (401) 772-1121

Consultant:  
 CONSTRUCTION MANAGER  
 Construction Management Group  
 7 Jackson Walkway  
 Providence, Rhode Island 02903  
 Phone: (401) 458-5516  
 Fax: (401) 458-5516

Consultant:  
 FOOD SERVICE  
 Food Service Systems, LLC  
 1808 West End Ave, Suite 1400  
 Providence, Rhode Island 02903  
 Phone: (401) 321-5591  
 Fax: (401) 321-5689

Notes:  
 1. It is the responsibility of the Construction Manager/General Contractor and all subcontractors to verify all conditions of work before proceeding with any work.

Date: 10.02.06 CORE & SHELL ISSUED FOR CONSTRUCTION  
 Drawn By: MAF/JUL/CLB/CLU/LMS  
 Scale: AS NOTED

Francis  
 Cauffman  
 Foley  
 Hoffmann

Project Title:  
 Mercy Health  
 System of Maine  
 FORE RIVER SHORT  
 STAY HOSPITAL

Project Location:  
 Francis Cauffman  
 Foley Hoffmann  
 Architects Ltd.  
 210 Acad Street  
 Philadelphia, PA 19103  
 Phone: 215-568-8250

Project Number:  
 F05-4898

Drawing Title and Number:  
 West Building Elevations  
 & Coursing Details

A2.01