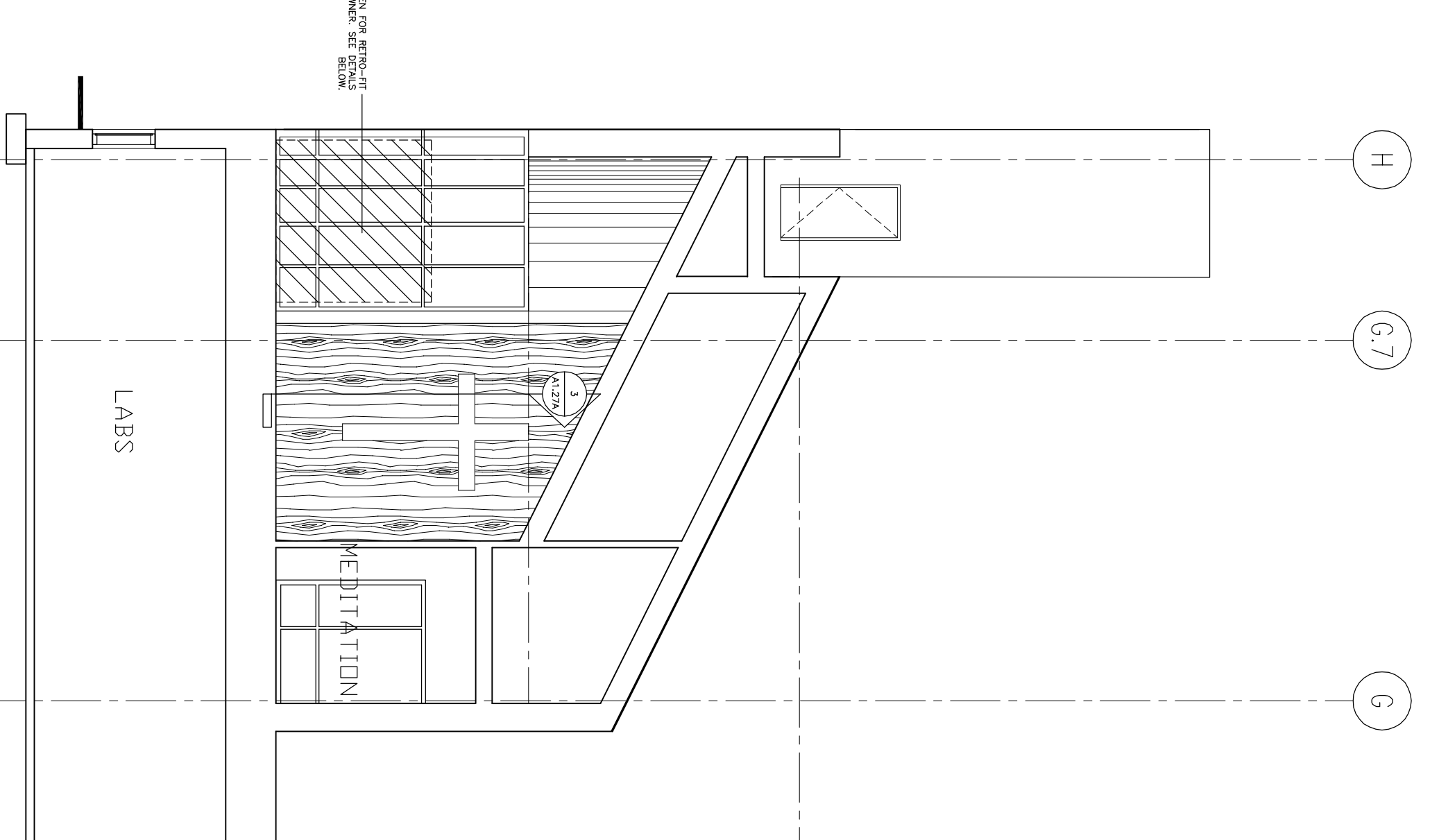


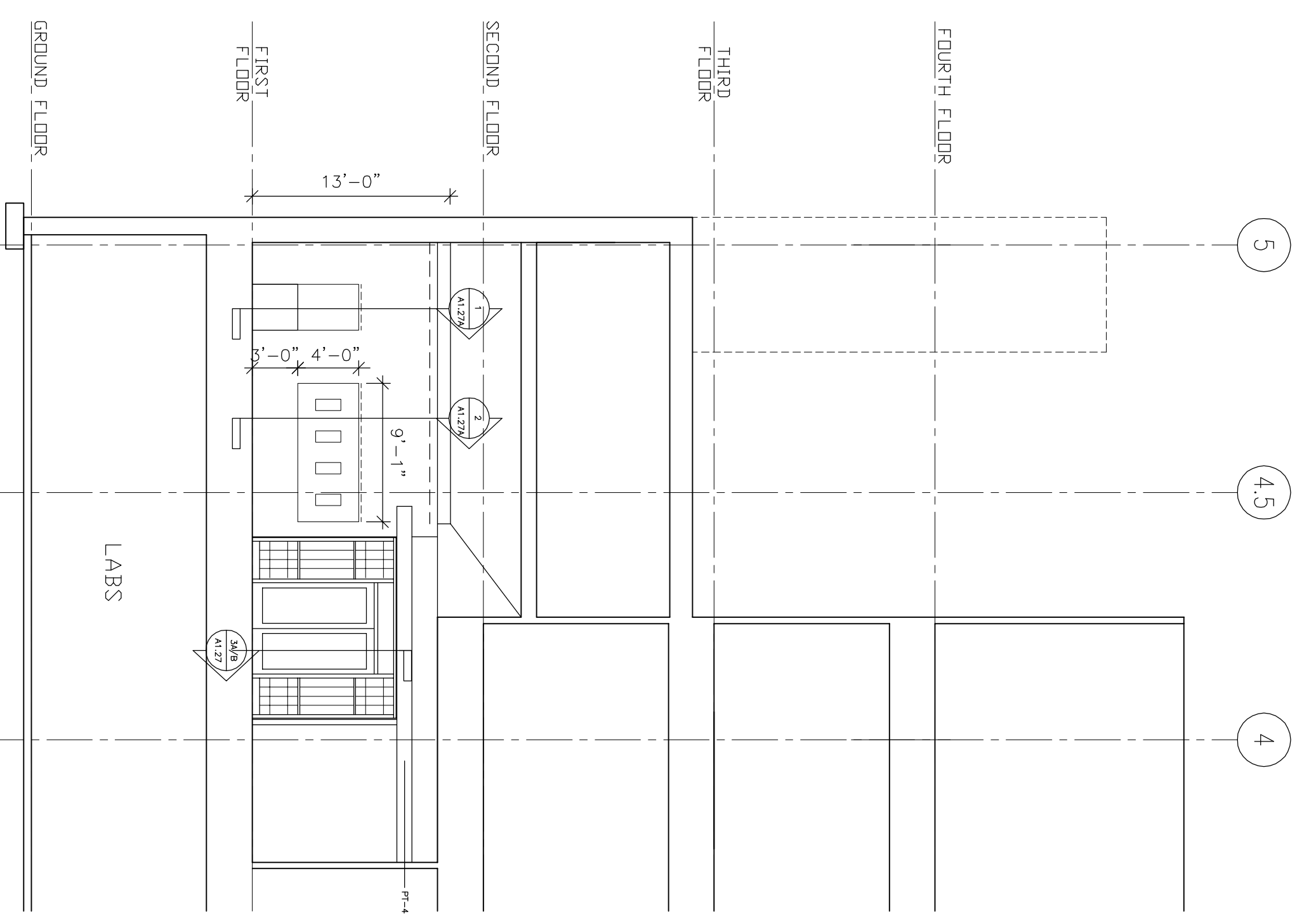
1 CHAPEL SECTION EAST VIEW
SCALE : 1/8"=1'-0"



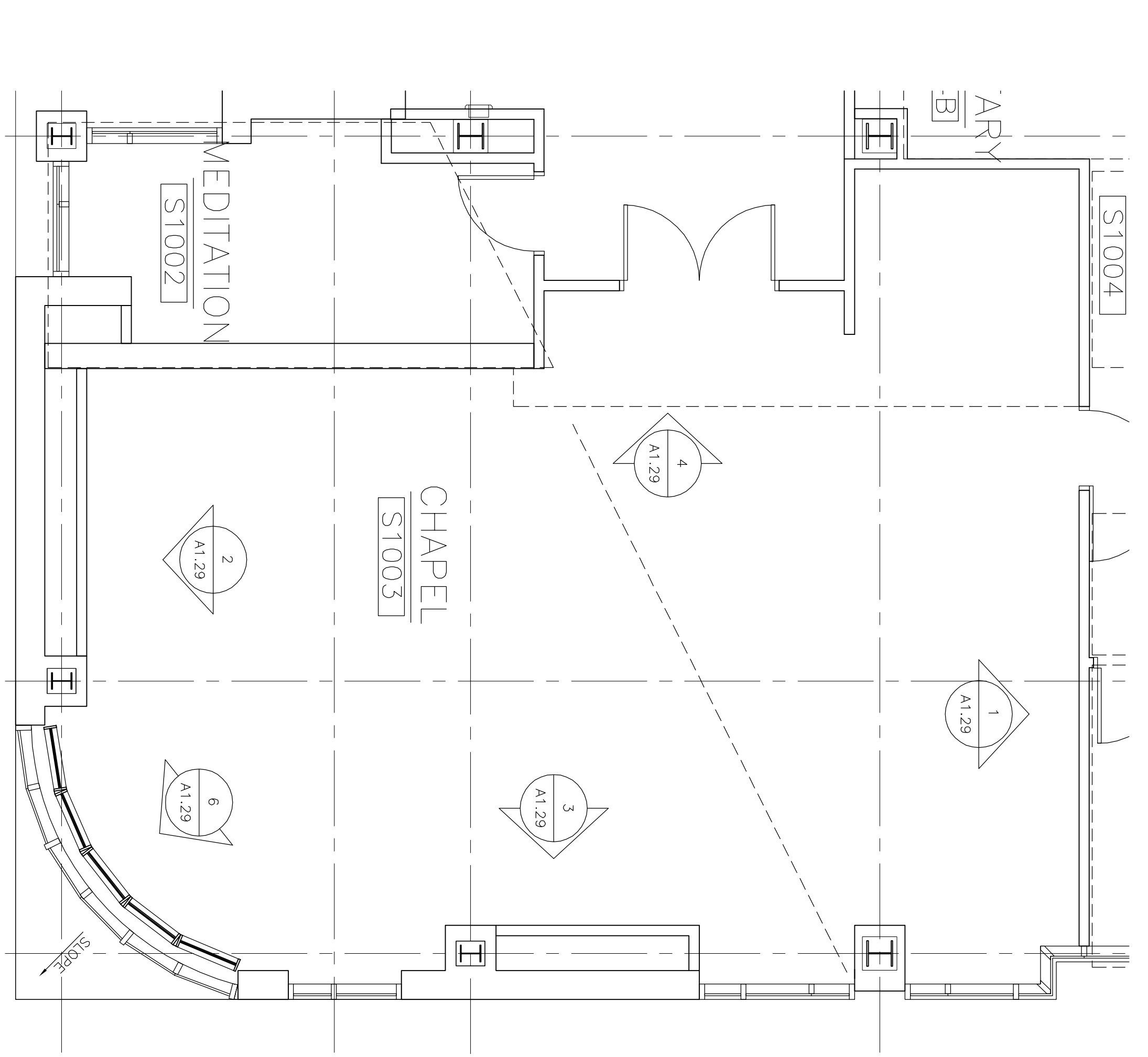
2 CHAPEL SECTION WEST VIEW
SCALE : 1/8"=1'-0"



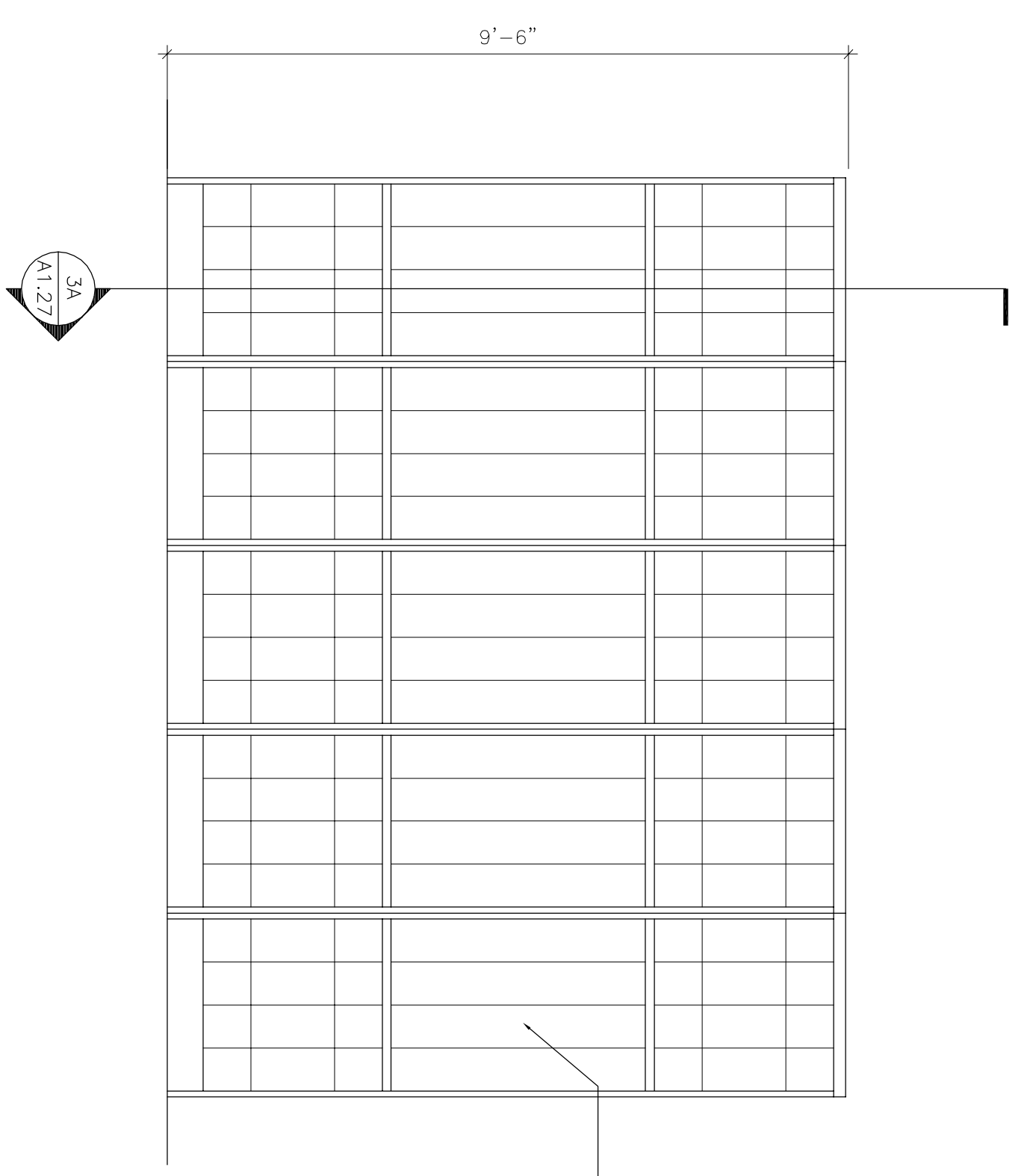
3 CHAPEL SECTION SOUTH VIEW
SCALE : 1/8"=1'-0"



4 CHAPEL SECTION NORTH VIEW
SCALE : 1/8"=1'-0"

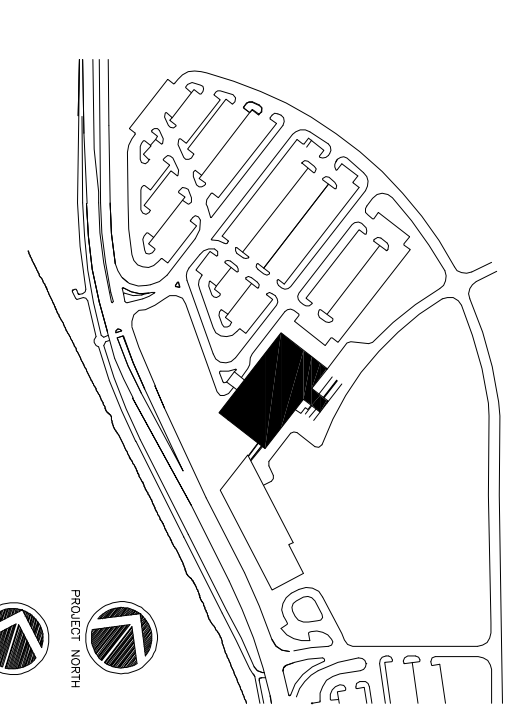


5 ENLARGED CHAPEL PLAN
SCALE : 1/4"=1'-0"



6 STAINED GLASS PANEL SCREEN @ EXTERIOR WALL
SCALE : 1/2"=1'-0"

STAINED GLASS TO BE SET IN FIELD VERIFY SIZE OF EXISTING STAINED GLASS PANELS AND FRAME PANELS TO SIT IN FRONT OF EXTERIOR WINDOW



Consultant
Civil Engineer
Deluca-Hoffman Associates, Inc.
226 Main Street, Suite 4106
Portland, Maine 04104
Phone: (207) 775-1121
Fax: (207) 879-0986

Consultant
ASSOCIATE ARCHITECT/STRUCTURAL ENGINEER
SMART New Street P.O. Box 618
Portland, Maine 04104
Phone: (207) 772-3846
Fax: (207) 772-1070

Consultant
MECHANICAL/ELECTRICAL ENGINEER
Boyd, Ross + Atkins Consulting Engineers, LLC
311 Arsenal Street
Portland, Maine 04102
Phone: 6172440012
Fax: 6172424339

Consultant
EQUIPMENT PLANNING
Equipment Planning
1853 General George Patton Drive
Franklin, Tennessee 37067
Phone: (615) 376-3114
Fax: (615) 376-3114

Consultant
CONSTRUCTION MANAGER
7 Johnson Whiskey
Portland, Maine 04263
Phone: (401) 456-8906
Fax: (401) 456-5516

Consultant
Interior Finisher
Impon Foundation, LLC
1808 Main End Ave. Suite 1400
Portland, Maine 04103
Phone: (615) 271-5591
Fax: (615) 271-5689

The responsibility of the Construction Manager/General Contractor and all subcontractors shall be to verify and accept conditions of prior work by review trades before proceeding with any work.

Date 11/10/06 Issue for Construction

Drawn By SKG/MAG

Scale AS NOTED

Francis

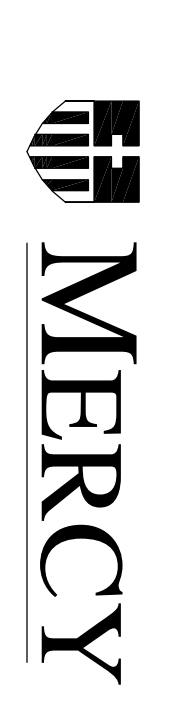
Cauffman

Foley

Hoffmann

Project Title
Mercy Health Core
System of Maine
FORE RIVER SHORT
STAY HOSPITAL

Project Title
Mercy Health Core
System of Maine
FORE RIVER SHORT
STAY HOSPITAL



Project Number
F05-4898

Drawing Title and Number
CHAPEL DETAILS
A1.29