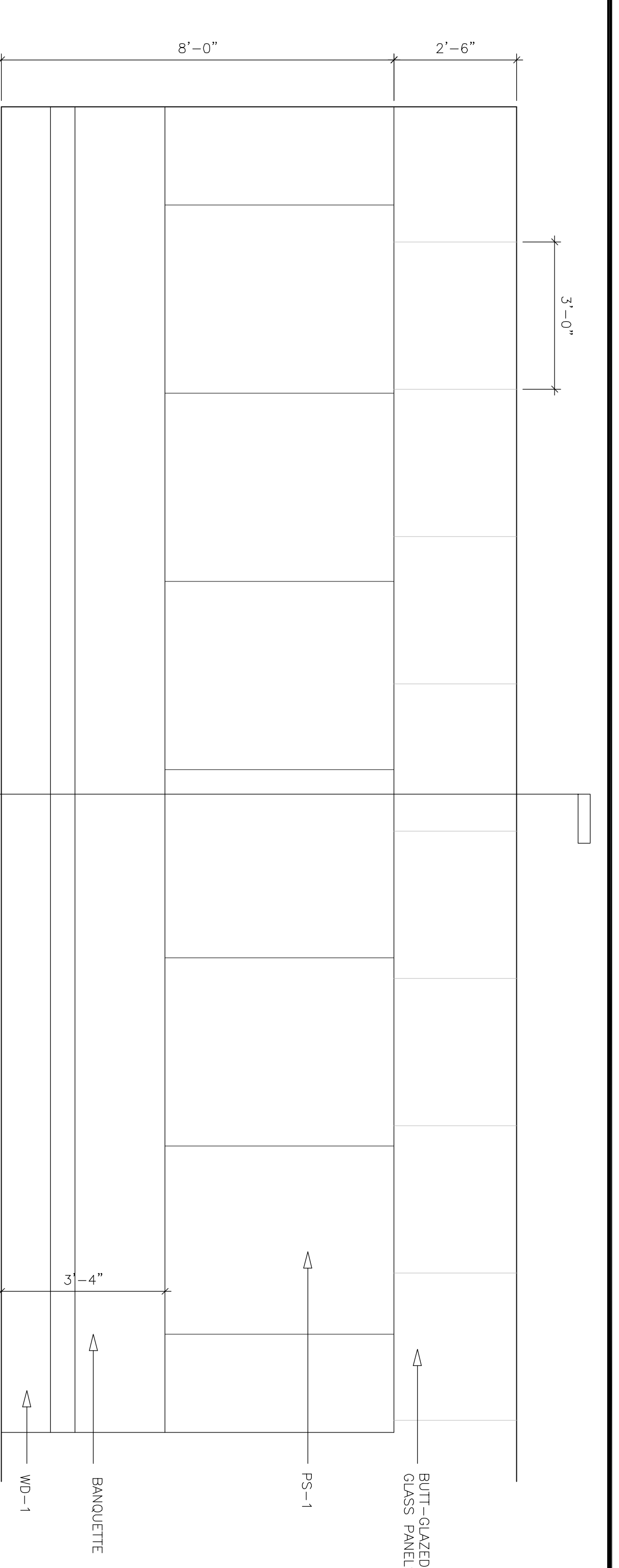
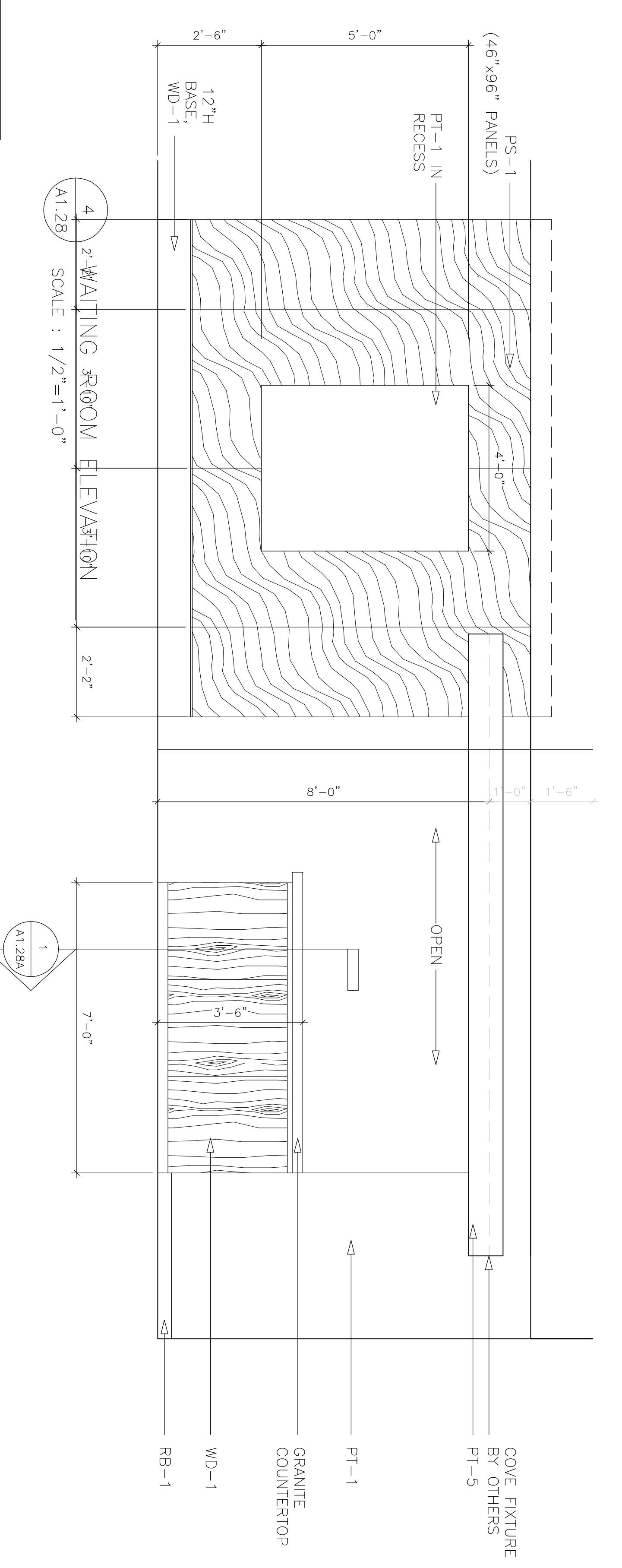


1 BANQUETTE ELEVATION@FIRE STAIR
 SCALE : 1/2"=1'-0"



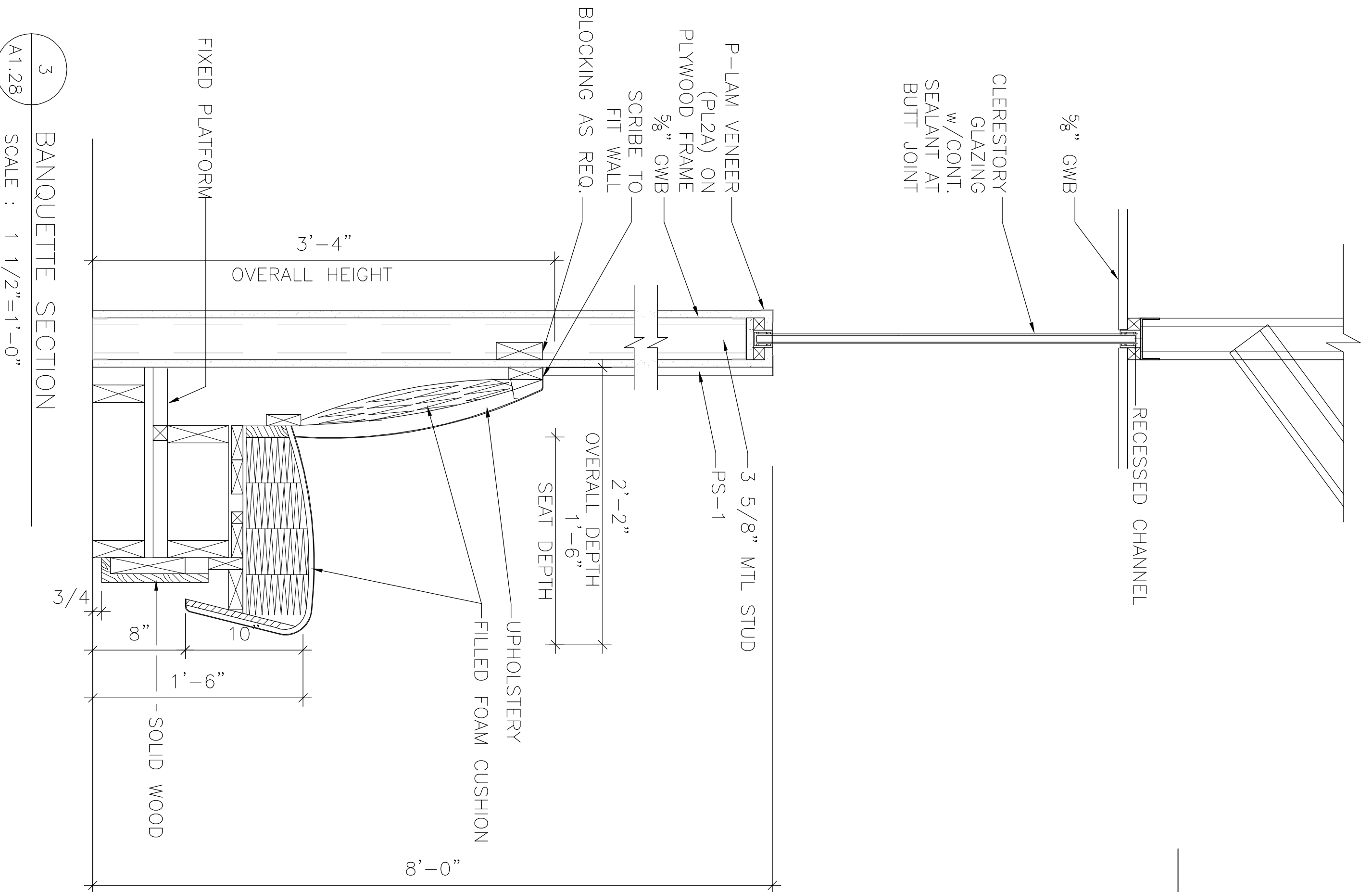
2 BANQUETTE ELEVATION@PRIVATE DINING
 SCALE : 1/2"=1'-0"

3 BANQUETTE SECTION
 SCALE : 1/2"=1'-0"

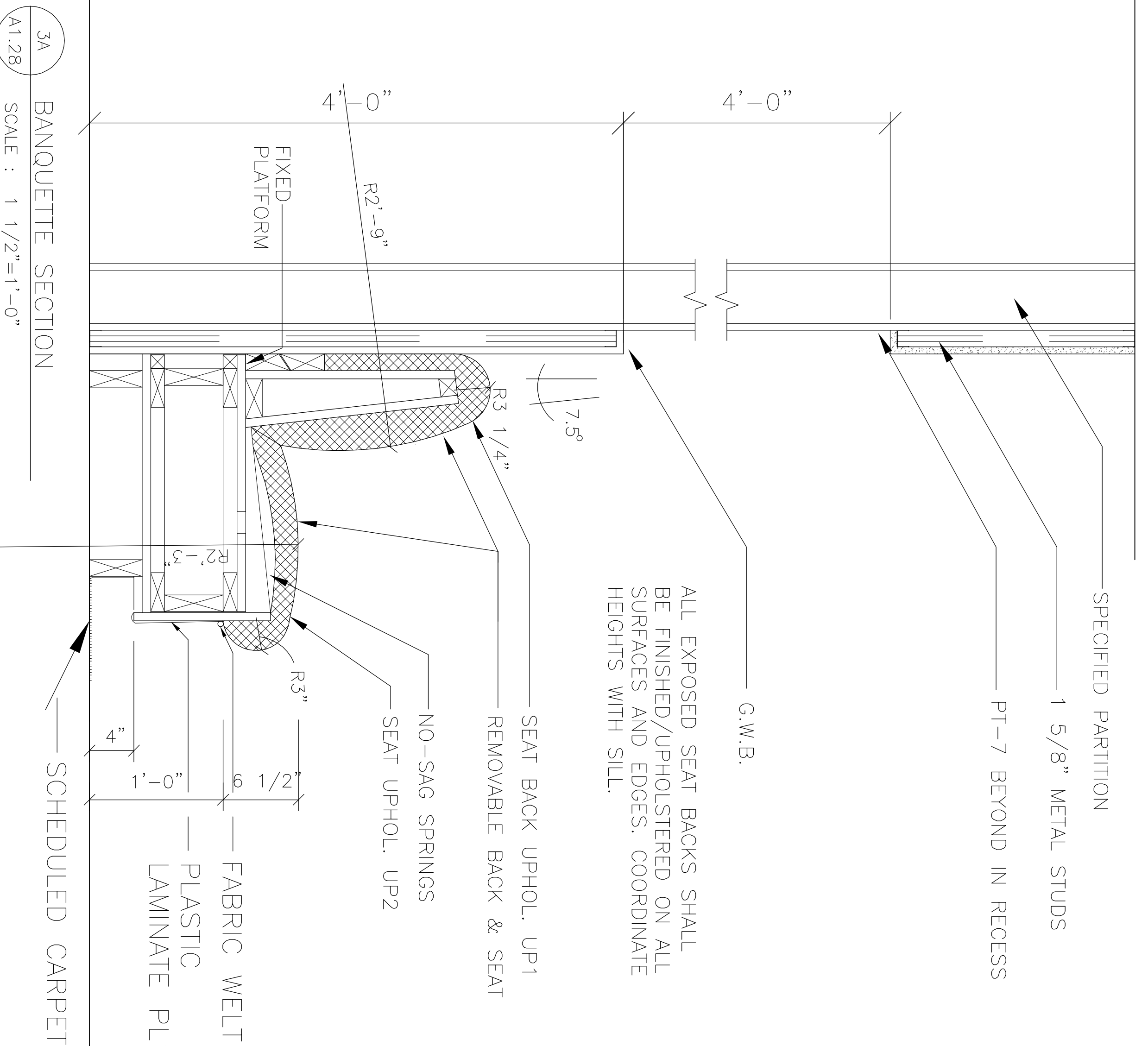


4 BANQUETTE WALLING ROOM ELEVATION
 SCALE : 1/2"=1'-0"

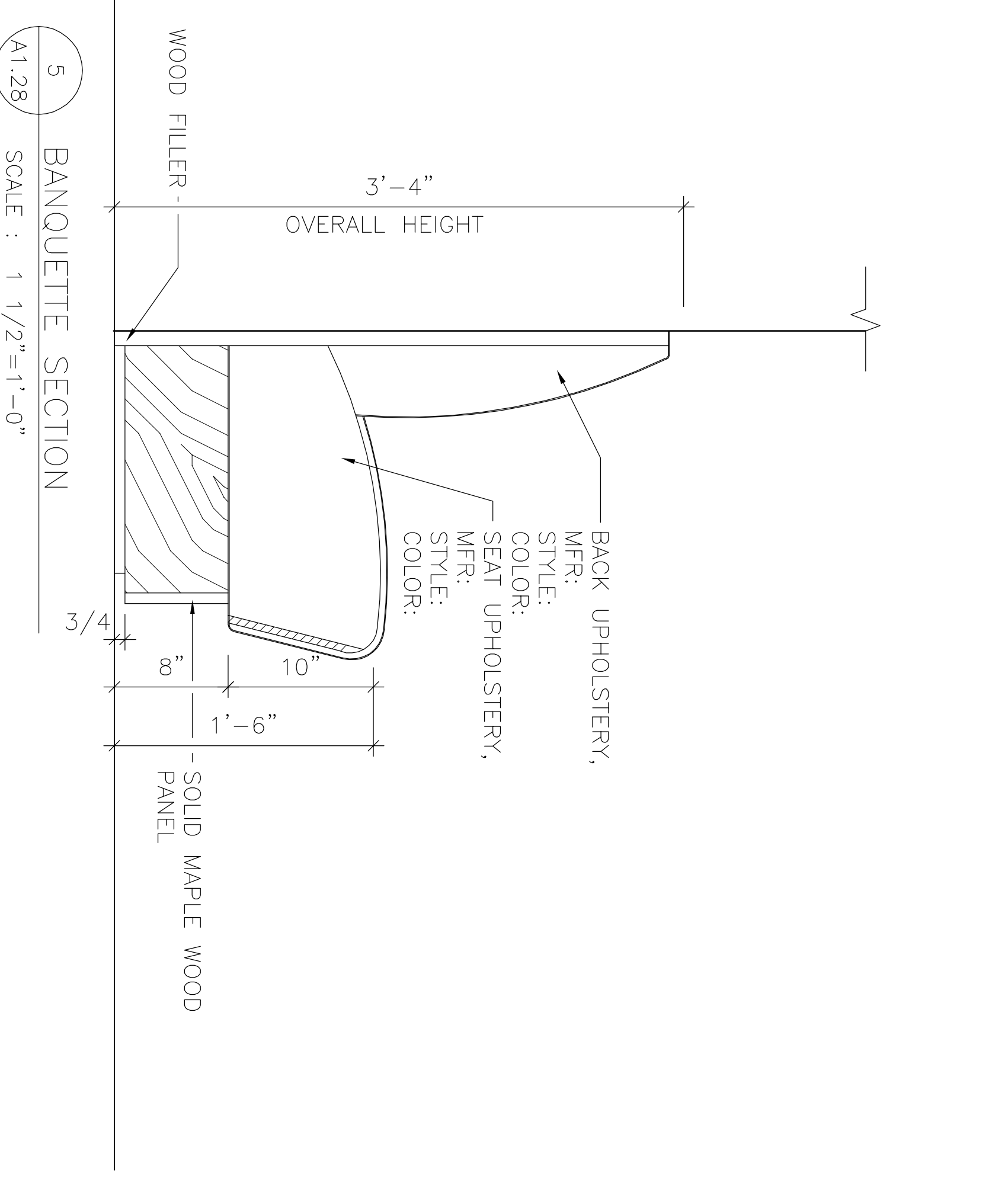
1 BANQUETTE SECTION
 SCALE : 1/2"=1'-0"



3 BANQUETTE SECTION
 SCALE : 1/2"=1'-0"



3A BANQUETTE SECTION
 SCALE : 1/2"=1'-0"



5 BANQUETTE SECTION
 SCALE : 1/2"=1'-0"

Notes:
 1. The responsibility of the construction manager/general contractor and all other parties shall be to ensure that all work is completed in accordance with the conditions of prior work by related trades before proceeding with any work.

Date: 11/10/06 Issue for Construction

Drawn By: SKG/MAG

Scale: AS NOTED

Francis

Caufman

Foley

Hoffmann

Project Title
 Mercy Health Core System of Maine
 FORE RIVER SHORT STAY HOSPITAL



Project Number: F05-4898
 Drawing Title and Number: Millwork Details

A1.28