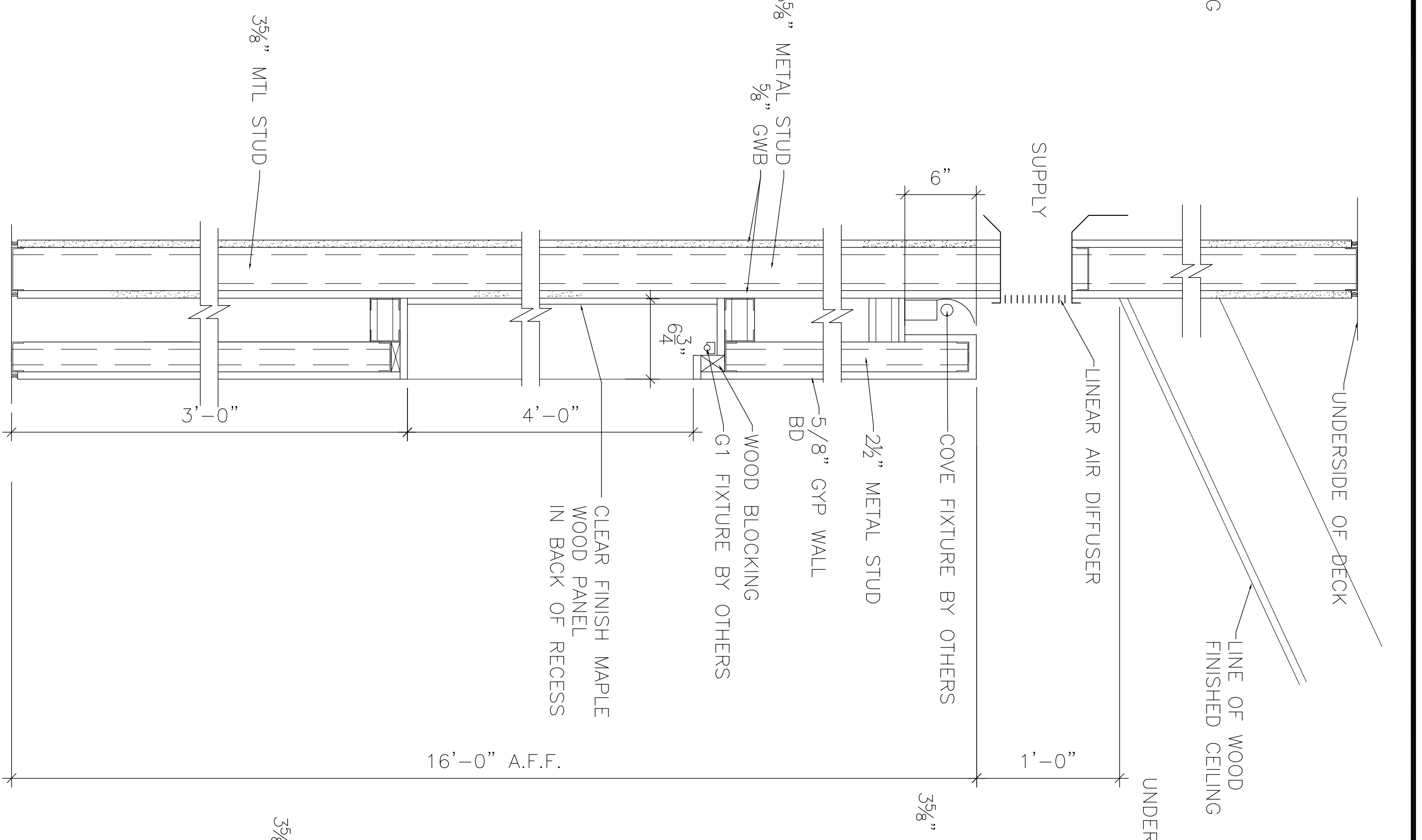
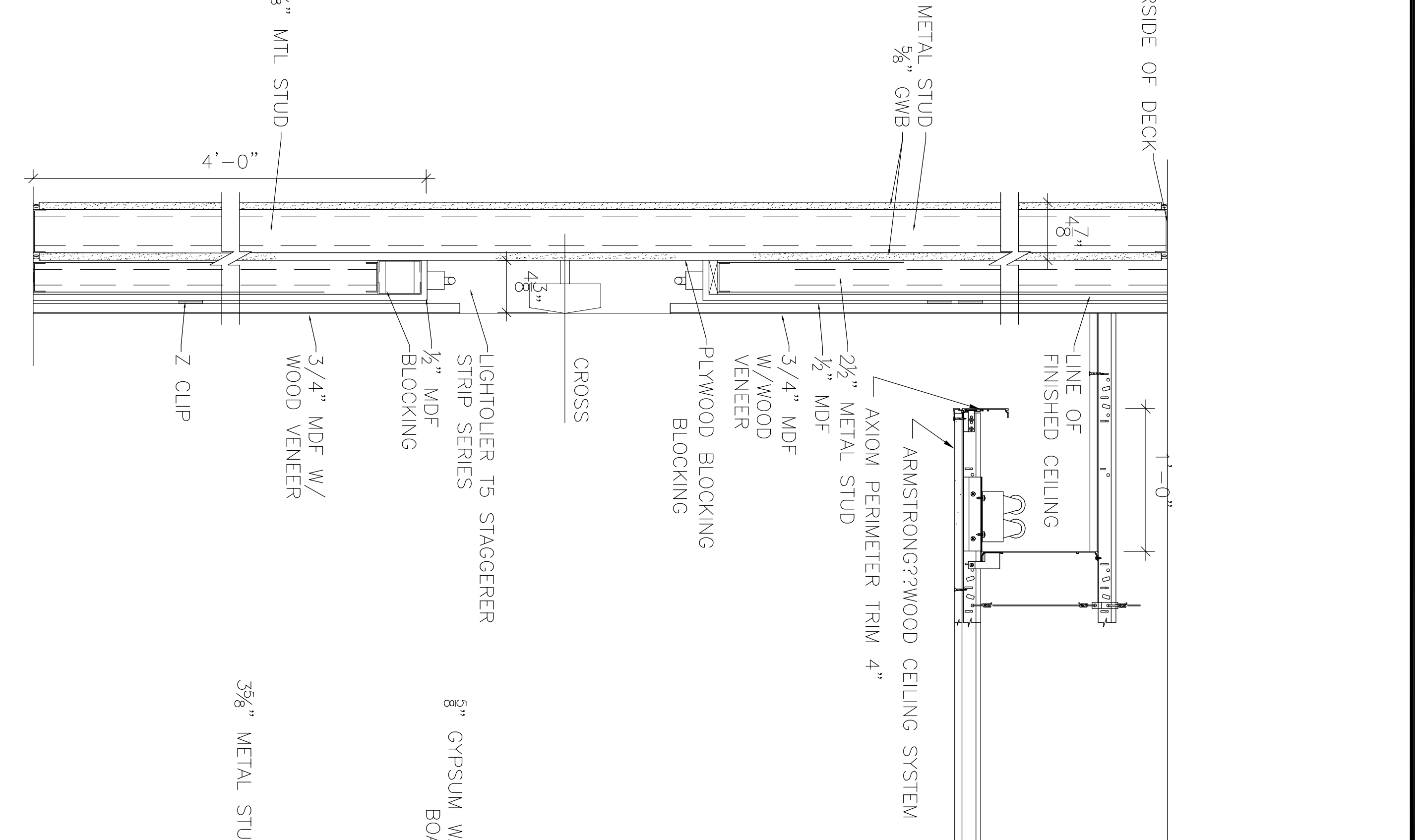


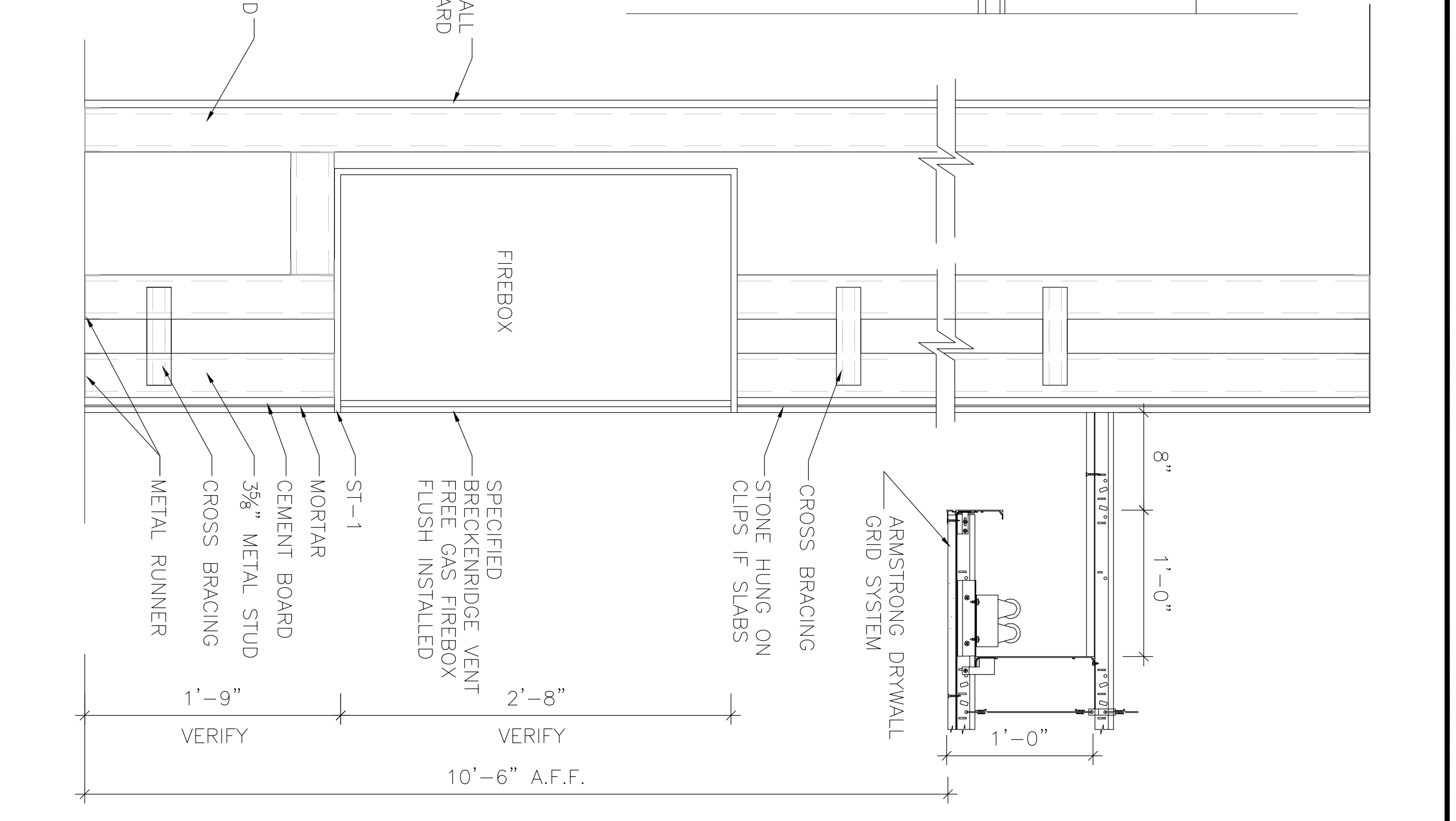
1 CHAPEL WALL SECTION - HOLY OIL ALCOVE  
SCALE: 1/2" = 1'-0"



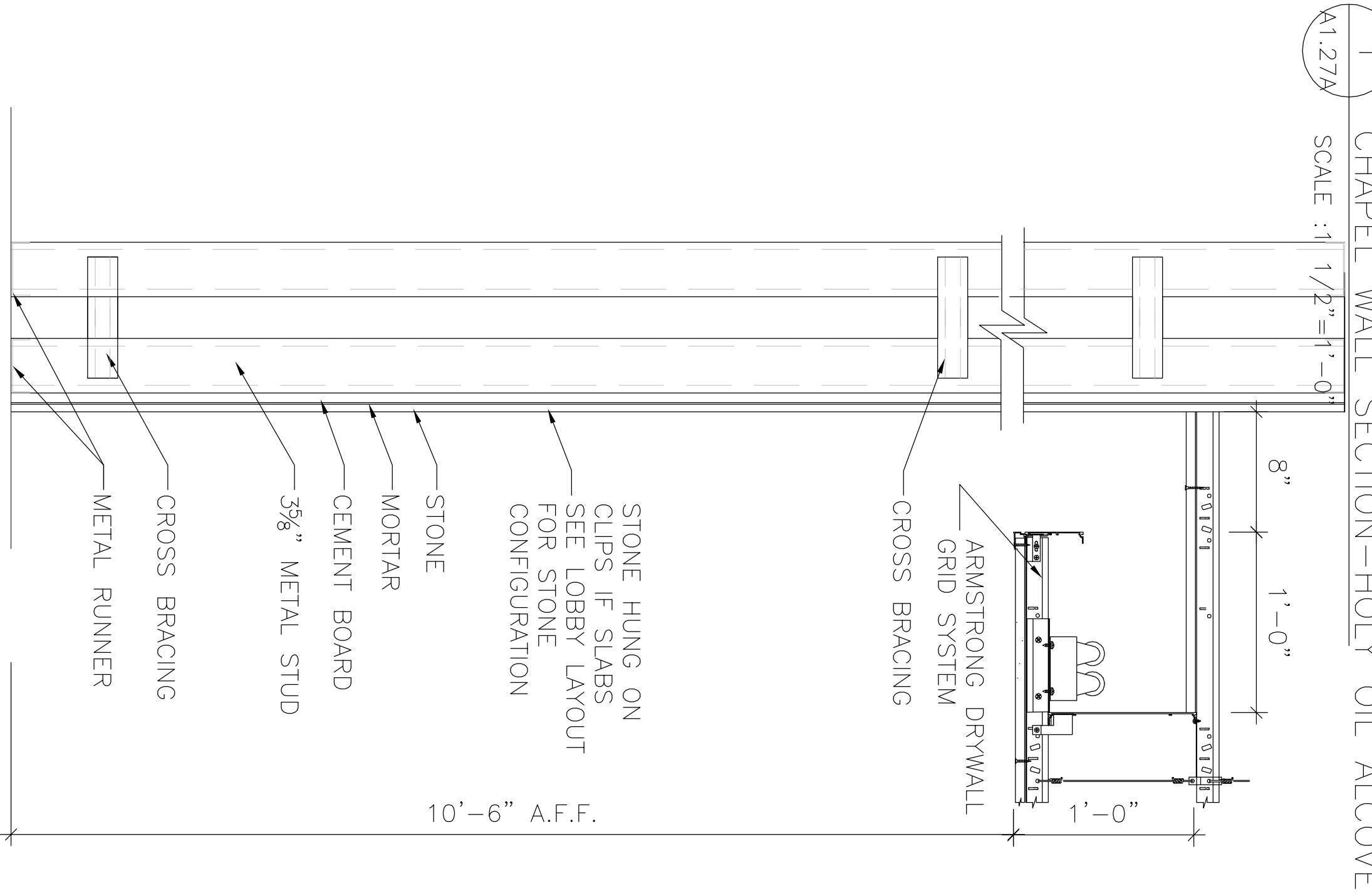
2 CHAPEL WALL SECTION - STATIONS OF THE CROSS  
SCALE: 1/2" = 1'-0"



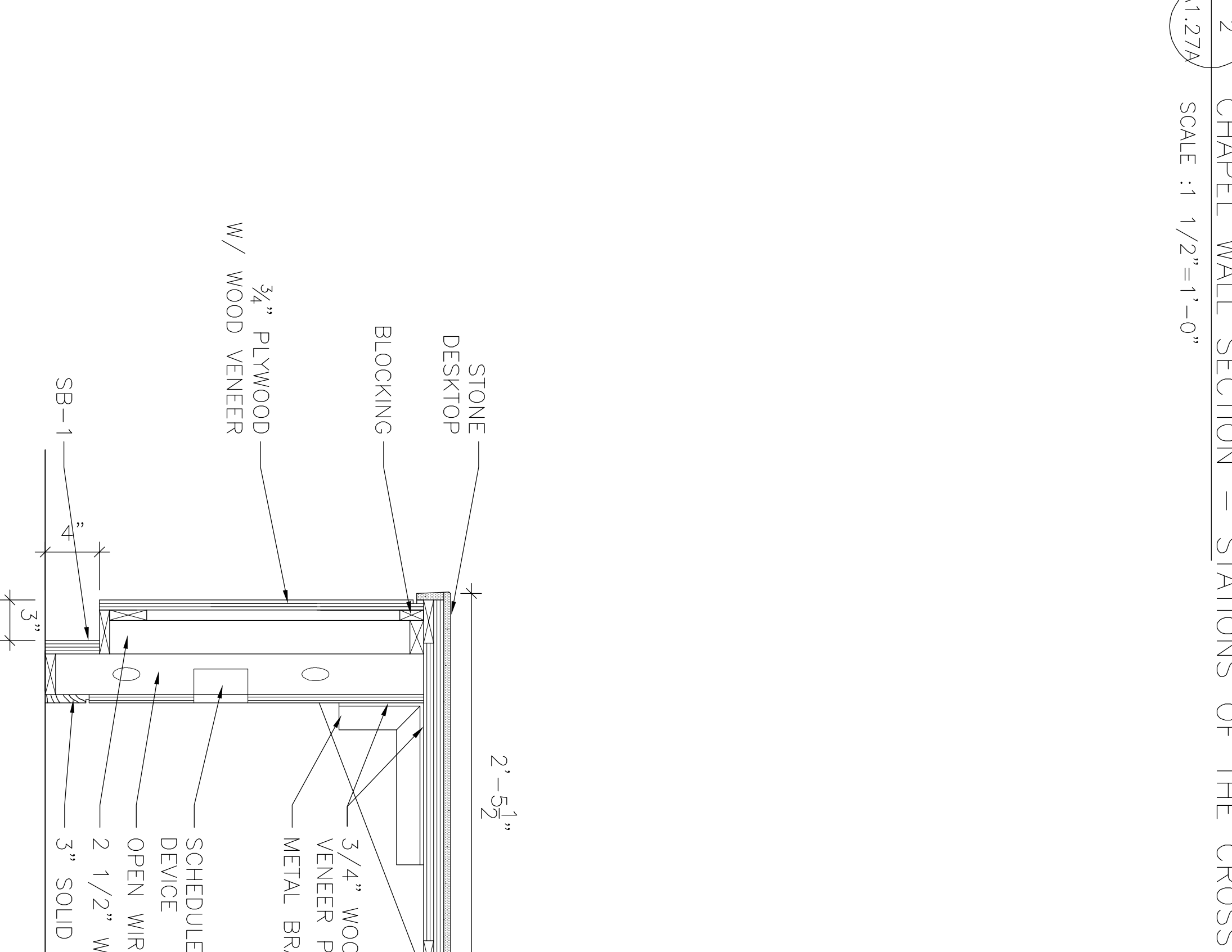
3 CHAPEL WALL SECTION - CROSS  
SCALE: 1/2" = 1'-0"



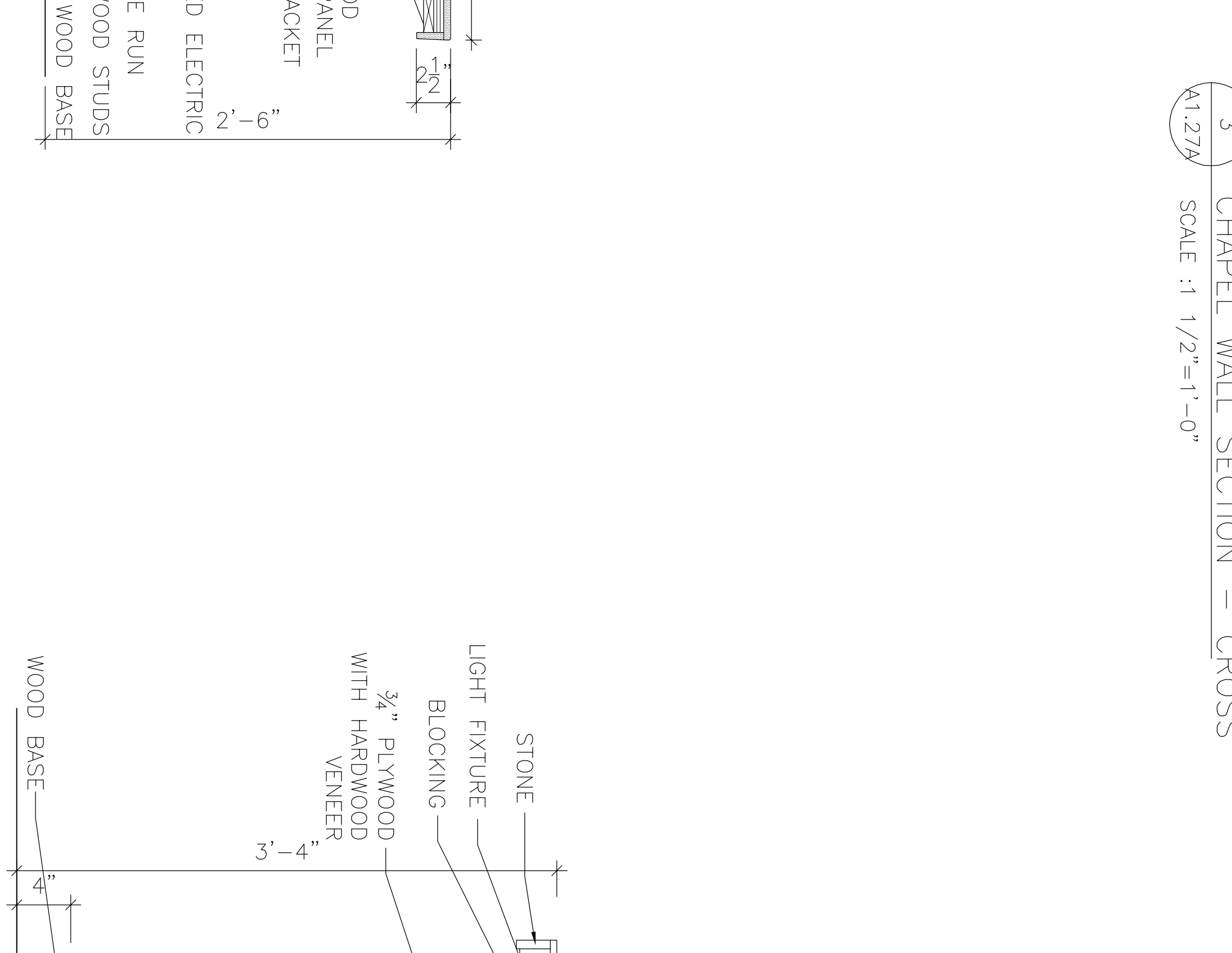
4 LOBBY FLUSH MOUNTED FIREPLACE  
SCALE: 1/2" = 1'-0"



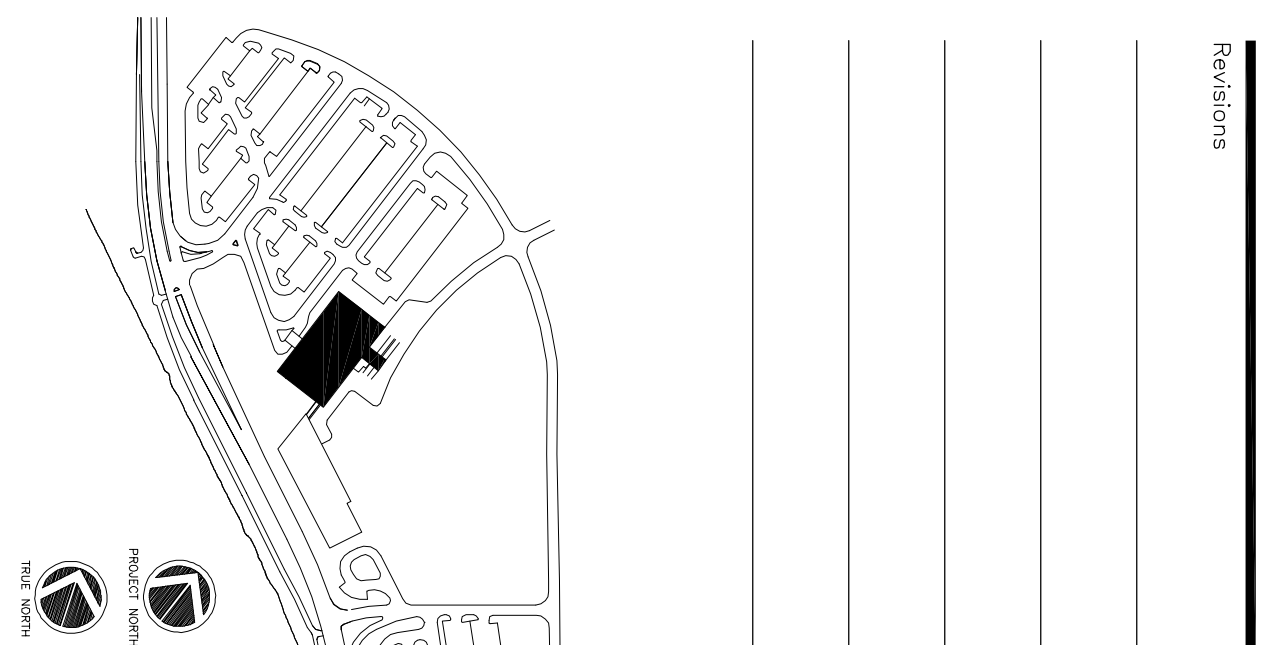
5 LOBBY WALL SECTION - CORNER STONE  
SCALE: 1/2" = 1'-0"



6 LOBBY DESK SECTION  
SCALE: 1" = 1'-0"



7 LOBBY DESK SECTION - SECURITY MONITORS  
SCALE: 1" = 1'-0"



Consultant:  
DNL ENGINEER  
Dillon-Hoffman Associates, Inc.  
2050 Ritten Street, Suite 4106  
Philadelphia, PA 19103  
Phone: (207) 775-1121  
Fax: (207) 879-0888

Consultant:  
ASSOCIATE ARCHITECT/STRUCTURAL ENGINEER  
SHEPHERD HUNTER P.C. Box 618  
Portland, Maine 04104  
Phone: (207) 772-5846  
Fax: (207) 772-1070

Consultant:  
MECHANICAL/ELECTRICAL ENGINEER  
BOD, BOG & ALPHEUS Consulting Engineers, LLC  
311 Aerial Street, Suite 200  
Portland, Maine 04106  
Phone: 617-254-0012  
Fax: 617-254-3139

Consultant:  
EQUIPMENT PLANNING  
EQUIPMENT PLANNING  
1863 General George Patton Drive  
Franklin, Tennessee 37067  
Phone: (615) 376-3114  
Fax: (615) 376-3114

Consultant:  
CONSTRUCTION MANAGER  
7 Jackson Walkway, Suite 200  
Portland, Maine 04106  
Phone: (401) 456-9909  
Fax: (401) 456-5516

Consultant:  
Interior Designer  
Imman Fenderwade, LLC  
1808 Main Eng. Ave. Suite 1400  
Portland, ME 04106  
Phone: (615) 321-5591  
Fax: (615) 321-5689

I am the responsibility of the Construction Manager/General Contractor and all design and construction conditions of prior work by related trades before proceeding with my work.

Date: 11/10/06 Issue for Construction  
Drawn By: SKG/MAG  
Scale: AS NOTED

Francis  
Caulfman

Foley  
Hoffmann

Project Title:  
Mercy Health Core  
System of Maine  
FORE RIVER SHORT  
STAY HOSPITAL



Project Number: F05-4898  
Drawing Title and Number: LOBBY DETAILS  
A1.27A