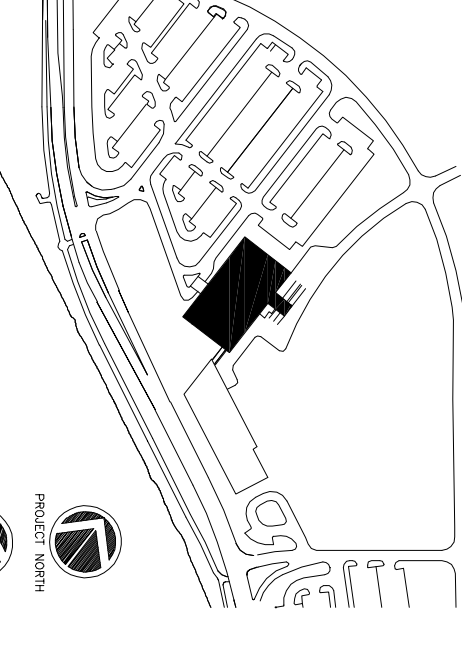


1
 A1.24C FOURTH FLOOR FURNITURE PLAN
 SCALE : 1/8" = 1'-0"

Revisions



Consultant
 CIVIL ENGINEER Associates, Inc.
 778 Main Street, Suite 8
 South Portland, ME 04106
 Phone: (207) 873-1211
 Fax: (207) 873-0886

Consultant
 ASSOCIATE ARCHITECT/STRUCTURAL ENGINEER
 144 Fore Street P.O. Box 618
 Portland, Maine 04104
 Phone: (207) 772-1070
 Fax: (207) 772-1070

Consultant
 BACHMACK/STEPHEN, ENGINEERS
 2000 Main Street, Suite 200
 The Arsenal on the Clashes
 Portland, ME 04106
 Phone: (207) 772-5789
 Fax: (207) 772-5789

Consultant
 EQUIPMENT PLANNING
 Gene Burton & Associates
 1000 Commercial Street
 Portland, Maine 04103
 Phone: (616) 376-3100
 Fax: (616) 376-3114

Consultant
 CONSTRUCTION MANAGER
 Gilbane Building Company
 Providence, Rhode Island 02903
 Phone: (401) 456-5905
 Fax: (401) 456-5916

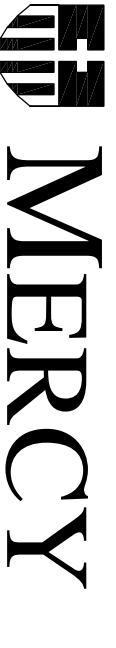
Consultant
 FOOD SERVICE
 Interim Concepts, LLC
 1000 Main Street, Suite 100
 Nashville, TN 37203
 Phone: (615) 271-5889
 Fax: (615) 271-5889

It is the responsibility of the Construction Sub-Contractors to verify all dimensions and notes before proceeding with any work.

Date 11/10/06 Issue for Construction
 Drawn by SKC/MAC
 Scale AS NOTED

Francis
 Cauffman
 Foley
 Hoffmann

Project Title
 Mercy Health Care
 System of Maine
 FORE RIVER SHORT
 STAY HOSPITAL



Project Number
 05-4898
 Drawing Title and Number
 FOURTH FLOOR
 FURNITURE PLAN
A1.24C