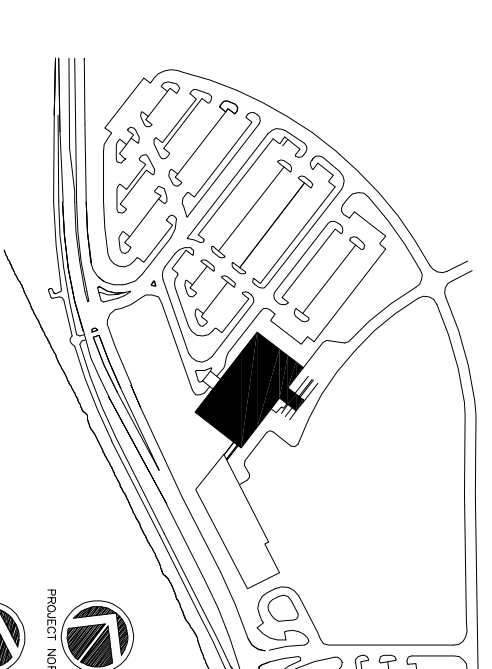


1 FOURTH FLOOR PATTERN PLAN
A1.24B SCALE : 1/8"=1'-0"

Revisions



Consultant
Civil Engineer
Deluce-Hoffman Associates, Inc.
2128 Main Street, Suite 8
Philadelphia, PA 19103
Phone (207) 775-1121
Fax (207) 879-0888

Consultant
ASSOCIATE ARCHITECT/STRUCTURAL ENGINEER
SMRT One Grand Ave., Box 618
Portland, Maine 04104
Phone (207) 772-3848
Fax (207) 772-1070

Consultant
MECHANICAL/ELECTRICAL ENGINEER
Burd, Roe & Atkins Consulting Engineers, LLC
1000 Main Street, Suite 200
311 Arsenal Street
Manchester, NH 03102-2789
Phone (603) 754-0016
Fax (603) 754-0019
Cell (603) 679-2339

Consultant
EQUIPMENT PLANNING
Mack
183 General George Patton Drive
Franklin, Tennessee 37067
Phone (615) 376-3114
Fax (615) 376-3114

Consultant
CONSTRUCTION MANAGER
Wolfe Construction Company
7 Johnson Wilsey
Portland, Maine 04102
Phone (401) 456-8998
Fax (401) 456-5518

Consultant
Interior Designer
Iron Studios, LLC
1808 West End Ave. Suite 1400
Portland, Maine 04102
Phone (615) 321-5591
Fax (615) 321-5589

1/1/10/06 Issue for Construction
11/10/06
Drawn By SKG/MAG
Scale AS NOTED

Francis

Caufman

Foley

Hoffmann

Project Title
Francis, Cauffman
Foley Hoffmann
Architects Ltd.
2128 Ash Street
Philadelphia, PA 19103
215-568-8250

Mercy Health Core
System of Maine
FORE RIVER SHORT
STAY HOSPITAL



Project Number
F05-4898

Drawing the old Number
Fourth Floor
Pattern Plan

A1.24B