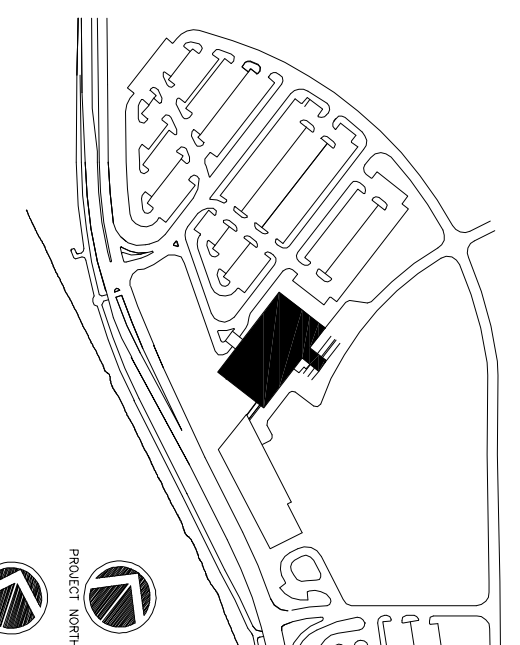


1 SECOND FLOOR FURNITURE PLAN
SCALE : 1/8"=1'-0"



Consultant
Civil Engineer
Dilworth-Hoffman Associates, Inc.
208 Kato Street, Suite 8
Philadelphia, PA 19106
Phone: (207) 772-1211
Fax: (207) 879-0888

ASSOCIATE ARCHITECT/STRUCTURAL ENGINEER
SHERI J. SHAW, P.E.
311 Arsenal Street
Portland, Maine 04104
Phone: (207) 772-3846
Fax: (207) 772-1070

Consultant
MECHANICAL/ELECTRICAL ENGINEER
Brid, Ross + Atkins Consulting Engineers, LLC
1000 North Main Street
311 Arsenal Street
Portland, ME 04102-2789
Phone: (207) 754-0017
Fax: 617-924-9339

Consultant
EQUIPMENT PLANNING
Merrill
1803 General George Patton Drive
Franklin, Tennessee 37067
Phone: (615) 376-3114
Fax: (615) 376-3114

Consultant
CONSTRUCTION MANAGER
7 Johnson Walkway
Johnson City, New York 12093
Phone: (405) 456-8998
Fax: (405) 456-5518

Consultant
Interior
Imago Federative, LLC
1808 Main End Ave Suite 1400
Portland, ME 04102
Phone: (615) 321-5591
Fax: (615) 321-5689

As the responsibility of the Construction Manager/General Contractor and all other parties involved, the accuracy and completeness of these drawings and their use are the responsibility of the user. No liability is assumed by the architect for any errors or omissions or for any use of these drawings for any purpose other than that intended. No part of these drawings may be reproduced or transmitted in any form or by any means, electronic or mechanical, including photocopying, recording, or by any information storage and retrieval system, without the prior written permission of the architect.

Date: 11/10/06 Issue for Construction

Drawn By: SKG/MAG

Scale: AS NOTED

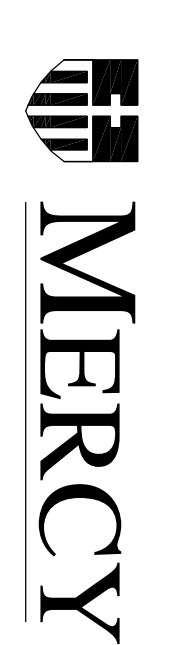
Francis

Cauffman

Foley

Hoffmann

Project Title
Mercy Health Core
System of Maine
FORE RIVER SHORT
STAY HOSPITAL



2120 Ash Street
Philadelphia, PA 19103
Phone: 215-568-8250

Project Number
F05-4989
Drawing Title
Second Floor
Furniture Plan
A1.22C