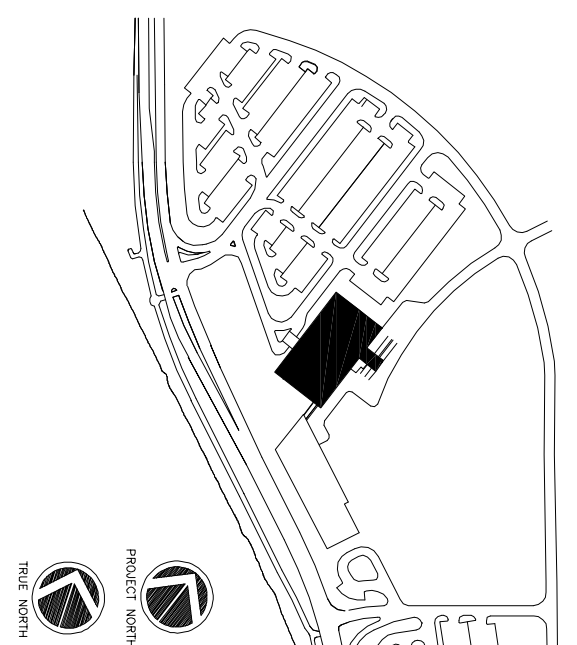


1 SECOND FLOOR PATTERN PLAN
A1.22B SCALE : 1/8"=1'-0"



Consultant
Civil Engineer
Deluce-Hoffman Associates, Inc.
208 Main Street, Suite 800
Plymouth, Pennsylvania, PA 19103
Phone (207) 775-1121
Fax (207) 879-0888

Consultant
ASPECT ARCHITECT/STRUCTURAL ENGINEER
3000 West Street, Box 818
Plymouth, Maine 04104
Phone (207) 772-3846
Fax (207) 772-1070

Consultant
MECHANICAL/ELECTRICAL ENGINEER
Brid, Ross & Aronson Consulting Engineers, LLC
311 Arsenal Street
Plymouth, Maine 04102-2789
Phone (207) 754-0017
Fax (207) 617-9243

Consultant
EQUIPMENT PLANNING
Mack
183 General George Patton Drive
Franklin, Tennessee 37067
Phone (615) 376-3114
Fax (615) 376-3114

Consultant
CONSTRUCTION MANAGER
7 Johnson Walkway
Plymouth, Maine 04102-2963
Phone (401) 456-8998
Fax (401) 456-5518

Consultant
Imogen Fenwick, LLC
1808 Main Street, Suite 1400
Plymouth, Maine 04102-2991
Phone (615) 321-5889

As the responsibility of the Construction Manager/General Contractor and all other parties involved, the user of this drawing and any other drawings or specifications shall be held responsible for any errors or omissions and shall be held liable for any damages or costs incurred as a result of any such errors or omissions.

Date 11/10/06 Issue for Construction
Drawn By SKG/MAG
Scale AS NOTED

Francis
Coffman

Foley
Hoffmann

Project Title
Mercy Health Core
System of Maine
FORE RIVER SHORT
STAY HOSPITAL

Project Location
2120 Ash Street
Plymouth, PA 19103
Project Number
F05-4989
Drawing Title
Second Floor
Pattern Plan
A1.22B