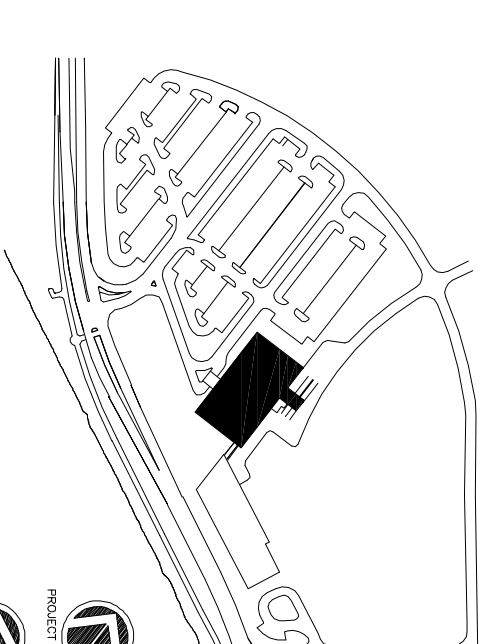


1 FIRST FLOOR FURNITURE PLAN  
A1.21C SCALE : 1/8"=1'-0"



Consultant  
Civil Engineer  
Deluce-Huffman Associates, Inc.  
278 Main Street, Suite 8  
P.O. Box 100  
Portland, ME 04106  
Phone: (207) 775-1121  
Fax: (207) 879-0888

Consultant  
ASPECT ARCHITECT/STRUCTURAL ENGINEER  
3000 State Street, Box 618  
Portland, Maine 04104  
Phone: (207) 772-5846  
Fax: (207) 772-1070

Consultant  
MECHANICAL/ELECTRICAL ENGINEER  
Bird, Roe & Altona Consulting Engineers, LLC  
311 Arsenal Street  
Portland, ME 04102  
Phone: (207) 754-0016  
Fax: (207) 754-9339

Consultant  
EQUIPMENT PLANNING  
Meyer, Gorman & Associates  
183 General George Patton Drive  
Franklin, Tennessee 37067  
Phone: (615) 376-3114  
Fax: (615) 376-3114

Consultant  
CONSTRUCTION MANAGER  
7 Johnson Walkway  
Portland, ME 04103  
Phone: (401) 456-8998  
Fax: (401) 456-5518

Consultant  
Civil Engineer  
Horn Associates, LLC  
1808 Main End Ave Suite 1400  
Portland, ME 04103  
Phone: (615) 321-5591  
Fax: (615) 321-5589

Notes:  
1. The responsibility of the Construction Manager/General Contractor and all other parties involved in the construction of this project shall be determined by the contract documents and all other conditions of prior work by related trades before proceeding with any work.

Date: 11/10/06 Issue for Construction  
Drawn By: SKG/MAG  
Scale: AS NOTED

Francis

Caulfman

Foley

Hoffmann

Project Location:  
Francis, Caulfman  
Foley, Hoffmann  
Architects Ltd.  
2120 Ash Street  
Philadelphia, PA 19103  
Phone: 215-568-8250

Project Title:  
Mercy Health Core  
System of Maine  
FORE RIVER SHORT  
STAY HOSPITAL



Project Number: F05-4989

Drawing Title and Number:  
First Floor  
Furniture Plan  
A1.21C