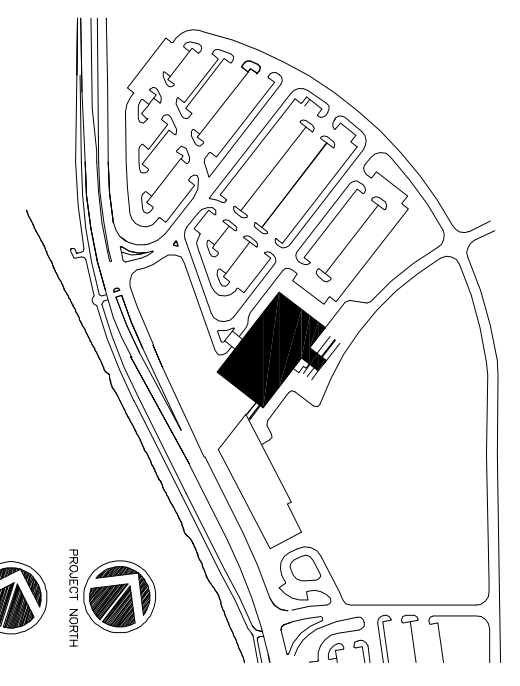


1 FIRST FLOOR PATTERN PLAN  
A1.21B SCALE : 1/8"=1'-0"

Revisions



Consultant  
 CONSULTANT  
 Deluce-Hoffman Associates, Inc.  
 218 Main Street, Suite 8  
 Philadelphia, PA 19103  
 Phone (207) 775-1121  
 Fax (207) 819-0888

ASSOCIATE ARCHITECT/STRUCTURAL ENGINEER  
 SMART One Street #21, Box 618  
 Portland, Maine 04104  
 Phone (207) 772-3846  
 Fax (207) 772-1070

MECHANICAL/ELECTRICAL ENGINEER  
 Bond, Rog & Atkins Consulting Engineers, LLC  
 311 Arsenal Street  
 Worcester, MA 01608  
 Phone (508) 754-0016  
 Fax (508) 754-9339

EQUIPMENT PLANNING  
 Equipment Planning  
 183 General George Patton Drive  
 Franklin, Tennessee 37067  
 Phone (615) 376-3114  
 Fax (615) 376-3114

CONSTRUCTION MANAGER  
 Construction Manager  
 7 Johnson Walkway  
 Providence, RI 02903  
 Phone (401) 456-8996  
 Fax (401) 456-5516

CONSULTANT  
 CONSULTANT  
 From Technology, LLC  
 1808 West End Ave Suite 1400  
 Nashville, TN 37203  
 Phone (615) 321-5591  
 Fax (615) 321-5689

The responsibility of the Construction Manager/General Contractor and all other trades shall be to verify and accept conditions of prior work by related trades before proceeding with any work.

Date 11/10/06 Issue for Construction  
 Drawn By SKG/MAG  
 Scale AS NOTED

Francis

Caulfman

Foley

Hoffmann

Francis, Caulfman  
 Foley Hoffmann  
 Architects Ltd.  
 2120 Arch Street  
 Philadelphia, PA 19103  
 Phone (215) 568-8250

Project Name  
 Mercy Health Core  
 System of Maine  
 FORE RIVER SHORT  
 STAY HOSPITAL



Project Number  
 F05-4989

Drawing Title and Number  
 First Floor  
 Pattern Plan

A1.21B