

**Consultant**  
 Civil Engineer  
 Dulmus-Hoffman Associates, Inc.  
 228 Main Street, Suite 816  
 Philadelphia, PA 19103  
 Phone: (207) 775-1121  
 Fax: (207) 879-0888

**Consultant**  
 ASSOCIATE ARCHITECT/STRUCTURAL ENGINEER  
 SMRT  
 One New Street P.O. Box 818  
 Philadelphia, PA 19106  
 Phone: (207) 772-3846  
 Fax: (207) 772-1070

**Consultant**  
 MECHANICAL/ELECTRICAL ENGINEER  
 Bird, Roe & Arbones Consulting Engineers, LLC  
 311 Arsenal Street  
 Philadelphia, PA 19106-52789  
 Phone: (215) 624-6001  
 Fax: 617/924-9339

**Consultant**  
 EQUIPMENT PLANNING  
 Equipment Planning Associates  
 1895 General George Patton Drive  
 Fountain, Tennessee 37067  
 Phone: (615) 276-3114  
 Fax: (615) 276-3114

**Consultant**  
 CONSTRUCTION MANAGER  
 Construction Management Agency  
 7 Jackson, Wellesley  
 Massachusetts 02183  
 Phone: (401) 486-6906  
 Fax: (401) 486-5516

**Consultant**  
 Interior Designer  
 Ironco-Feodorovics, LLC  
 1828 West End Ave Suite 1400  
 Philadelphia, PA 19103  
 Phone: (615) 321-5591  
 Fax: (615) 321-5589

**The responsibility of the Construction Manager/General Contractor and all persons and agents conditions of prior work by retained trades before proceeding with any work.**

Date: 10/25/06 FINAL - ISSUE FOR BID  
 Drawn By: MAF/JUL/CLB/CLJ  
 Scale: AS NOTED

**Francis**

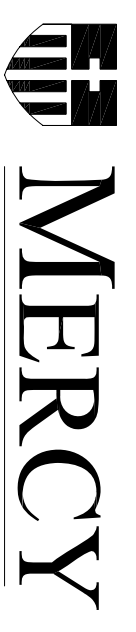
**Caufman**

**Foley**

**Hoffmann**

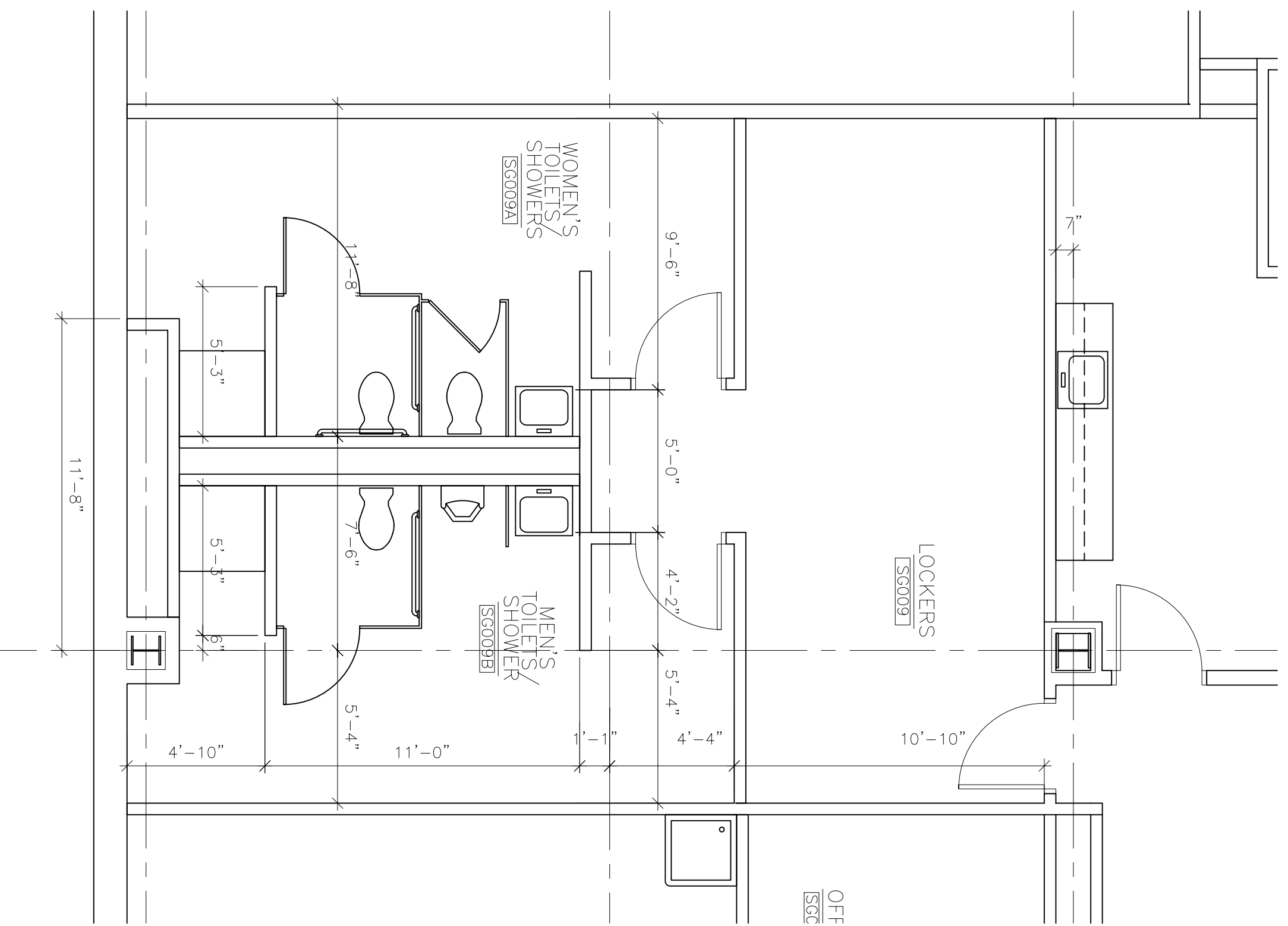
Francis, Cauffman  
 Foley Hoffmann  
 Architects Ltd.  
 3120 Arch Street  
 Philadelphia, PA 19103  
 215-568-8250

Project File: Mercy Health Care  
 System of Maine  
 FORE RIVER SHORT  
 STAY HOSPITAL

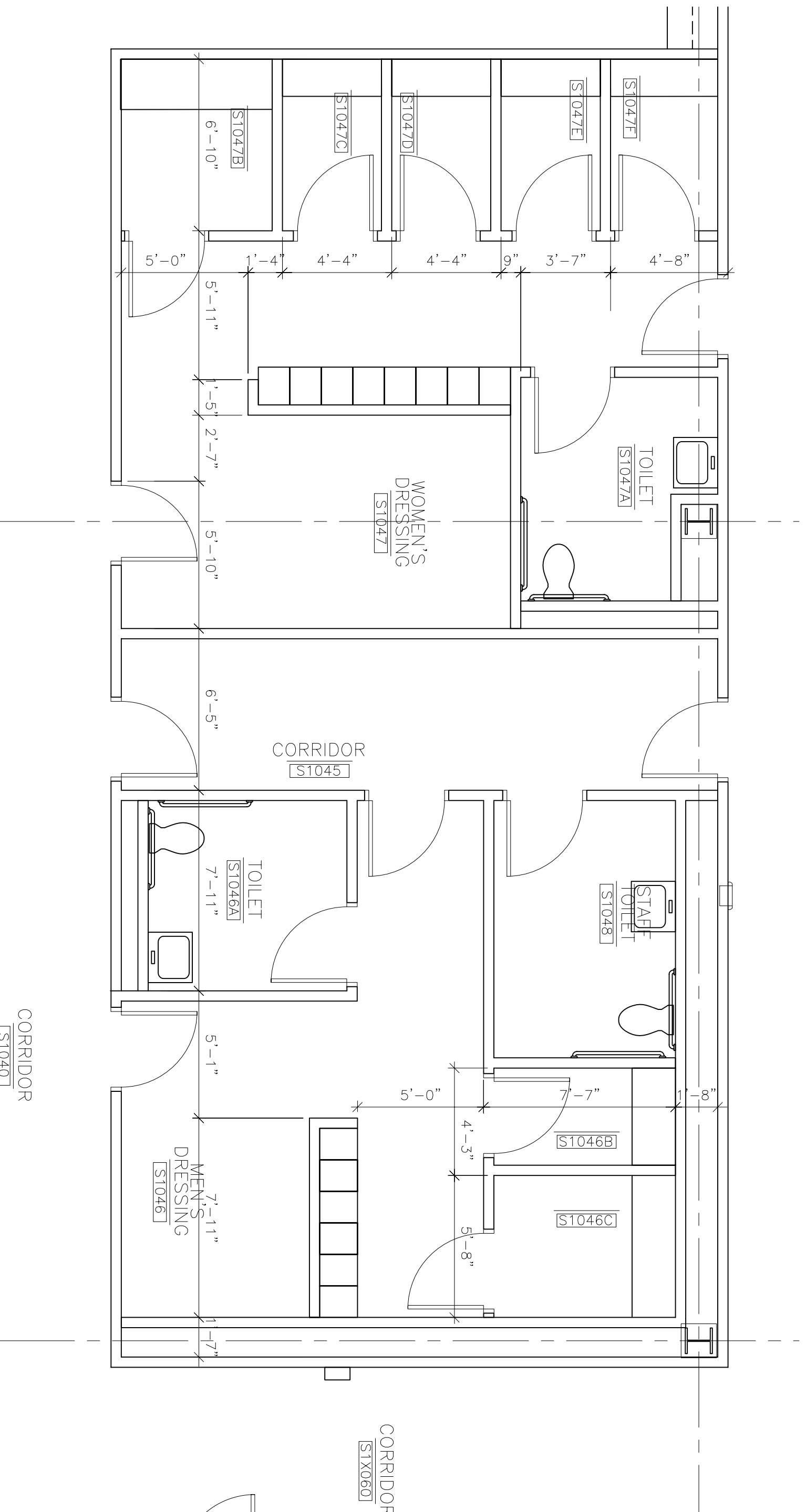


Project Number: F05-4898  
 Drawing Title and Number: Fore River Short Stay Hospital Floor Plans

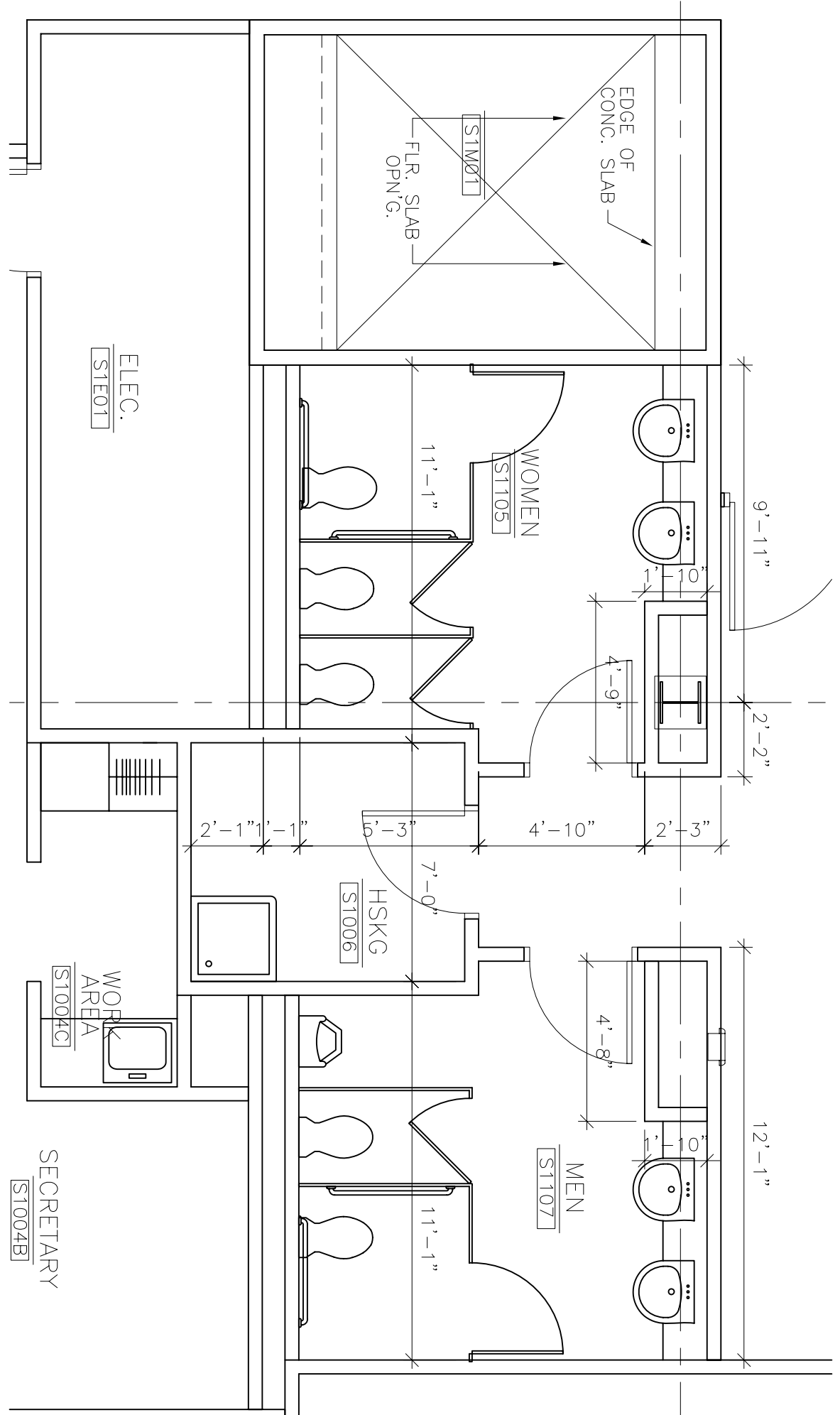
**A1.11**



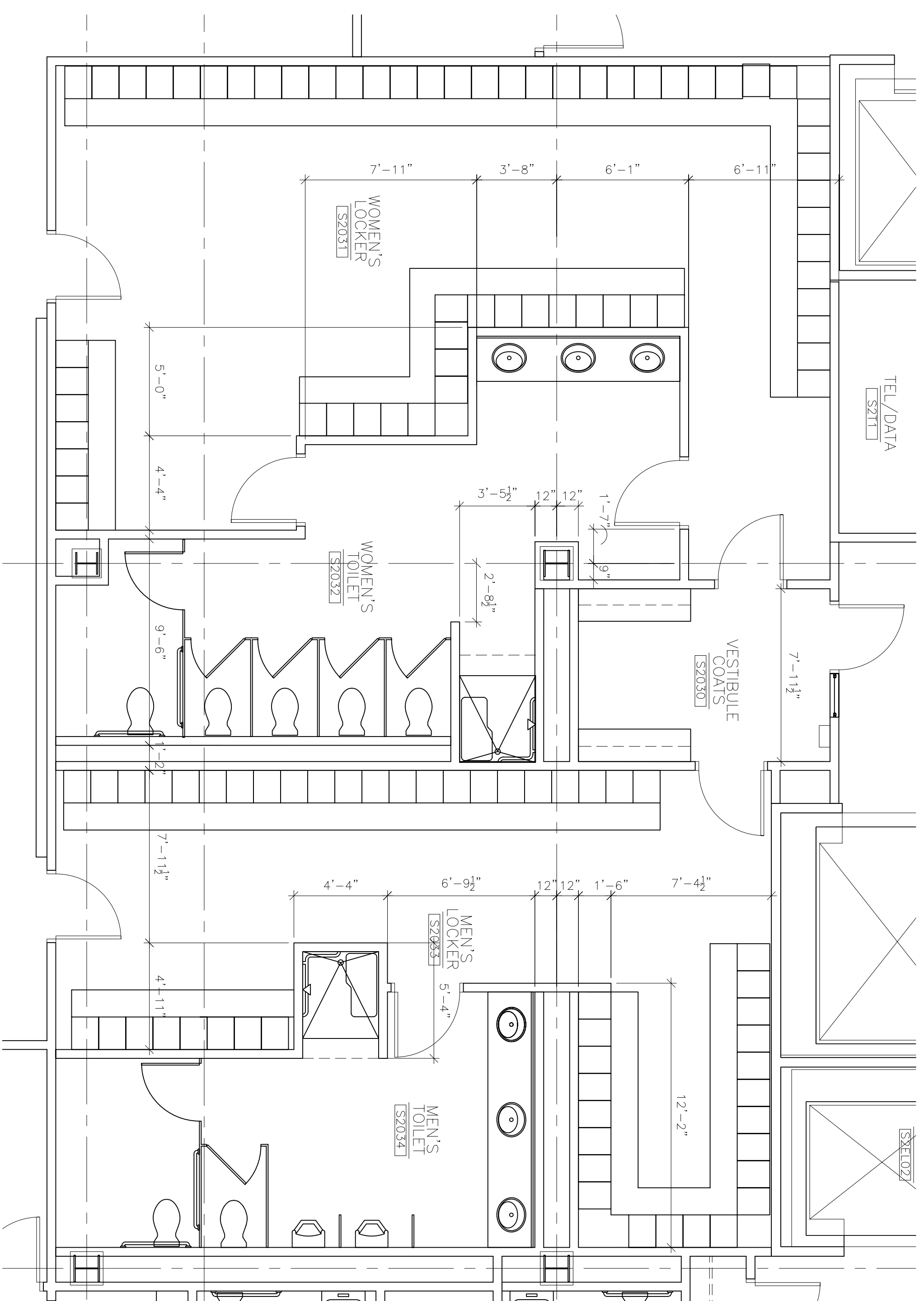
1.1 ENLARGED FLOOR PLAN  
 A1.11 1/4"=1'-0"



2.1 ENLARGED FLOOR PLAN  
 A1.11 1/4"=1'-0"



3.1 ENLARGED FLOOR PLAN  
 A1.11 1/4"=1'-0"



4.1 ENLARGED FLOOR PLAN  
 A1.11 1/4"=1'-0"