

Consultant
 CIVIL ENGINEER
 RENISON ASSOCIATES, INC.
 2778 Main Street, Suite 806
 Portland, Tennessee 37067
 Phone: (607) 772-1121
 Fax: (607) 893-0886

Consultant
 MECHANICAL/ELECTRICAL ENGINEER
 BURD, ROO & ARTHURS CONSULTING ENGINEERS, LLC
 311 Arsenal Street
 Middletown, VA 22672-5789
 Phone: (540) 863-1111
 Fax: (540) 863-1114

Consultant
 EQUIPMENT PLANNING
 SARGENT & JORDY
 144 Fox Street P.O. Box 618
 Middletown, VA 22672-3846
 Phone: (540) 772-3846
 Fax: (540) 772-1070

Consultant
 CONSTRUCTION MANAGER
 7 Jackson Walkway
 Providence, Rhode Island 02903
 Phone: (401) 458-5516
 Fax: (401) 458-5514

Consultant
 FOOD SERVICE
 FROM SKOVIS, LLC
 1808 West End Ave, Suite 1400
 Portland, Tennessee 37067
 Phone: (615) 321-5591
 Fax: (615) 321-5689

Consultant
 AS NOTED

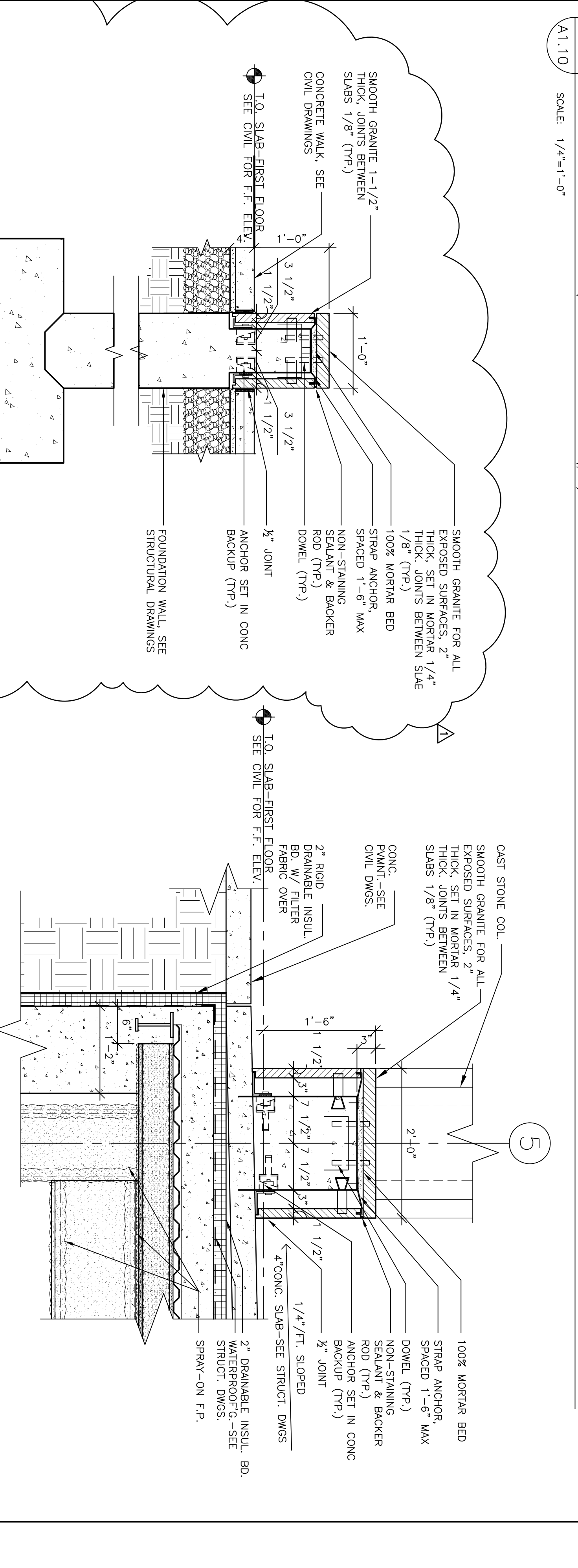
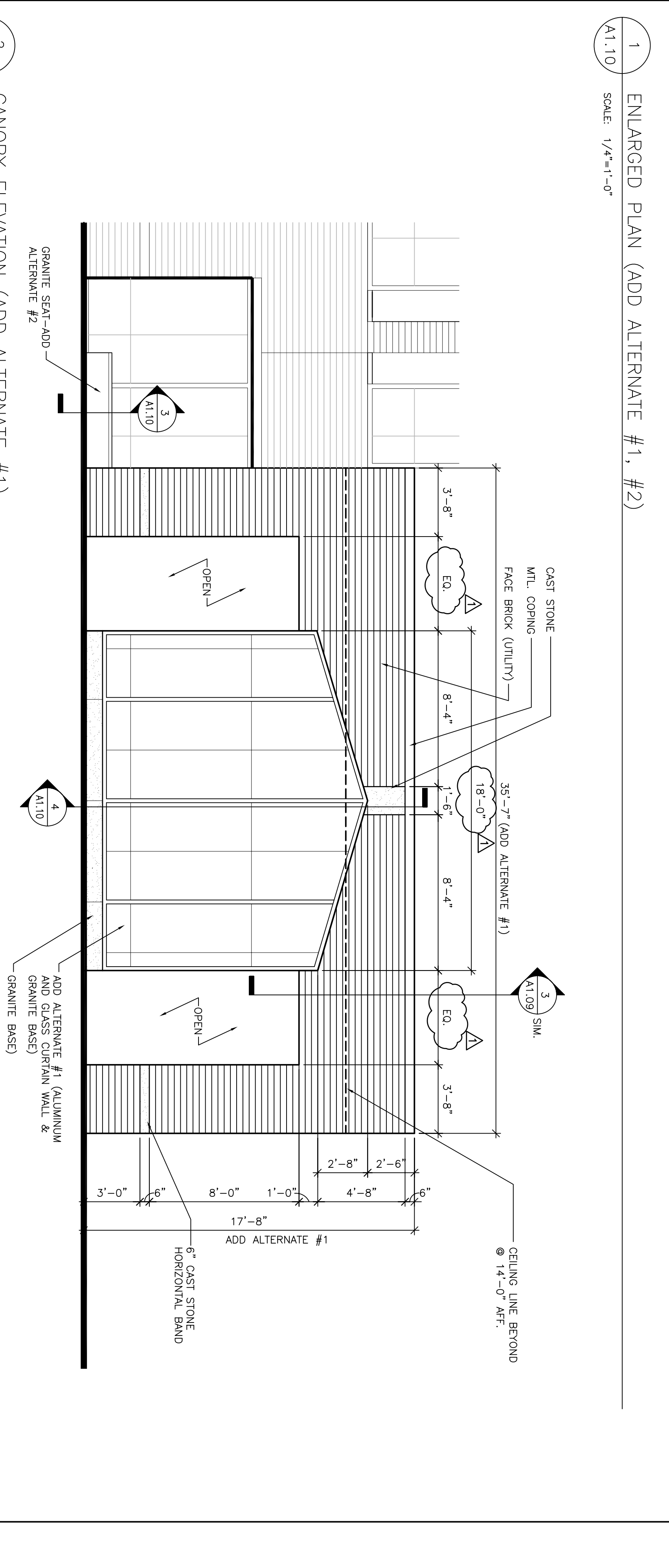
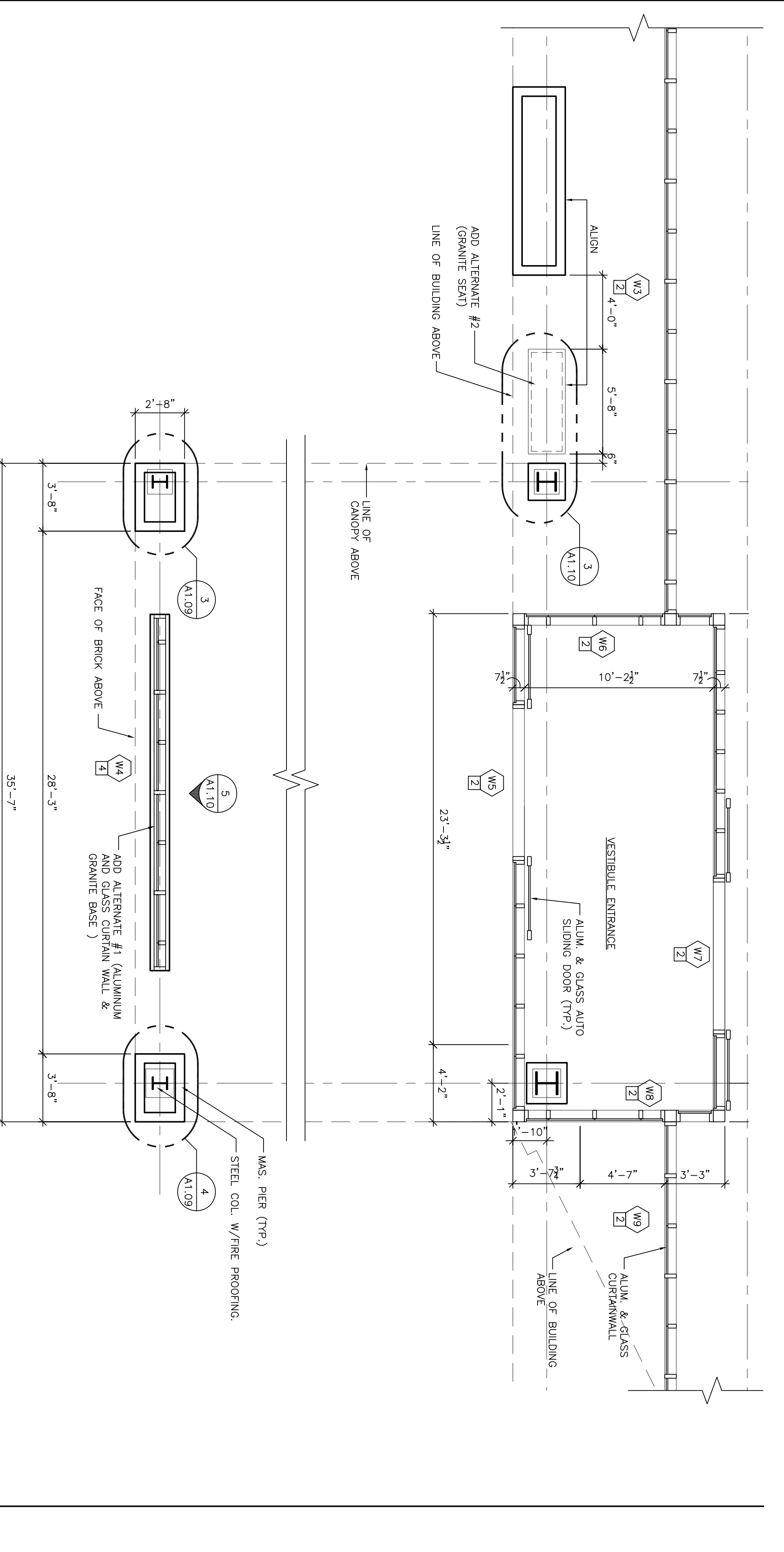
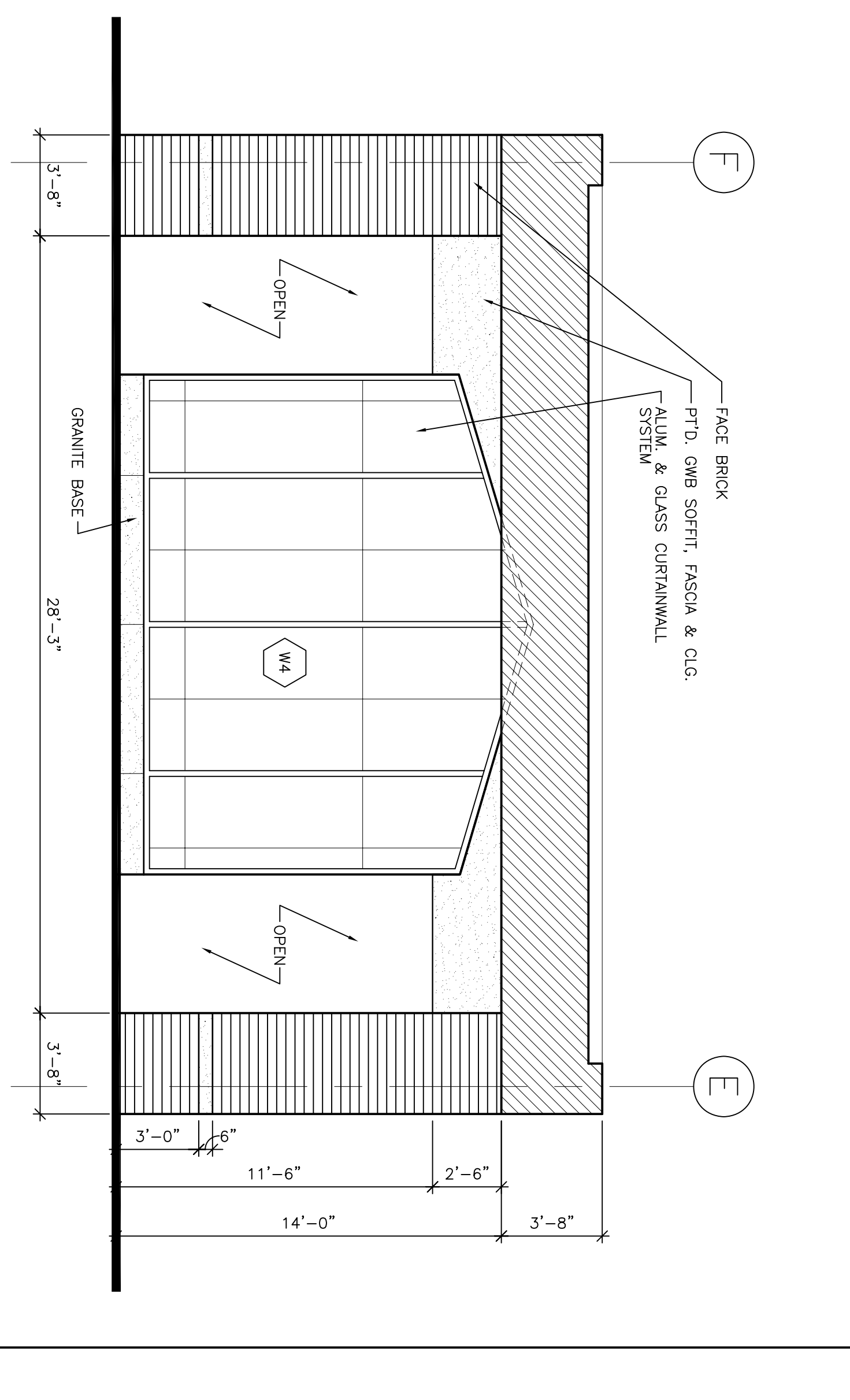
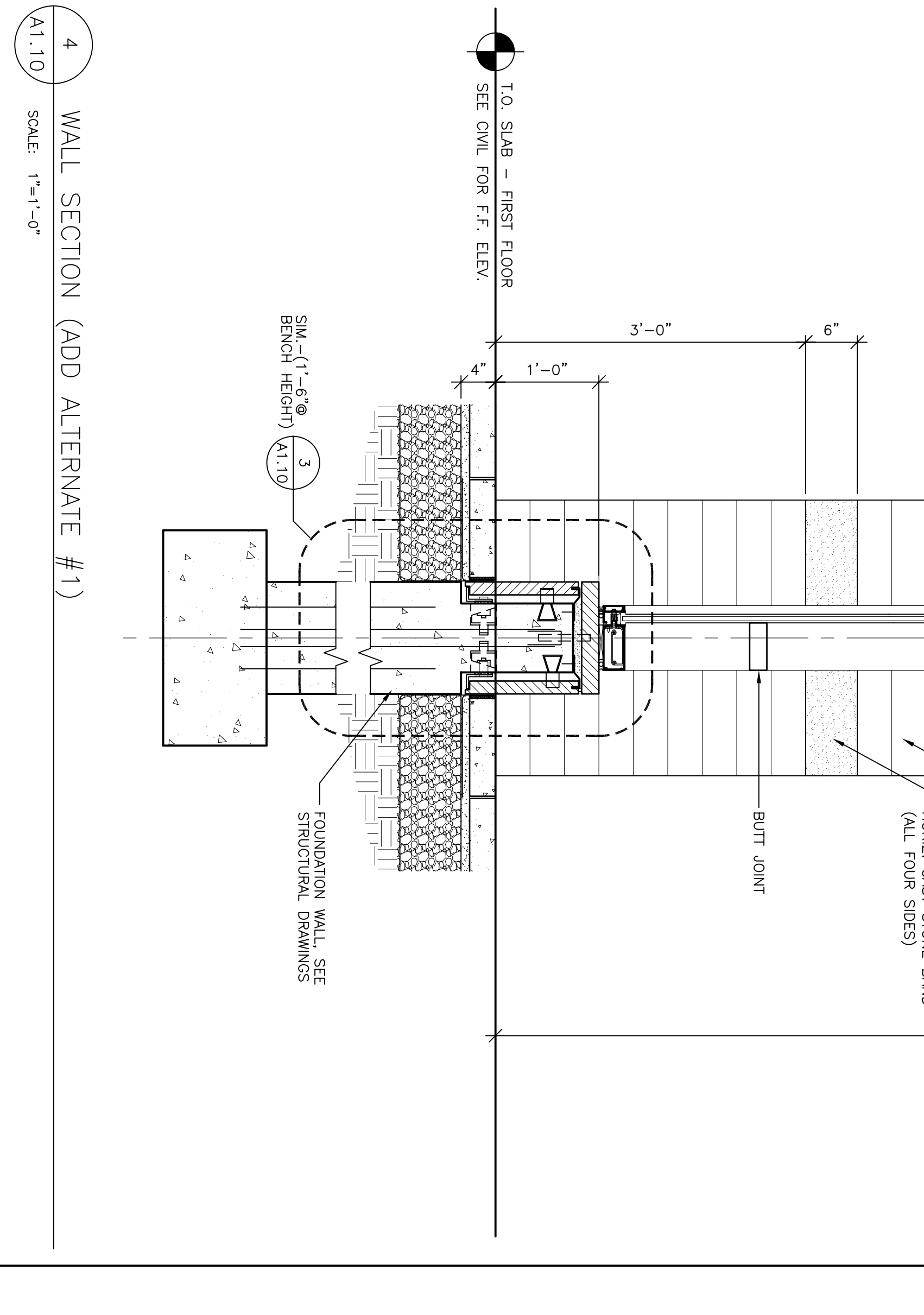
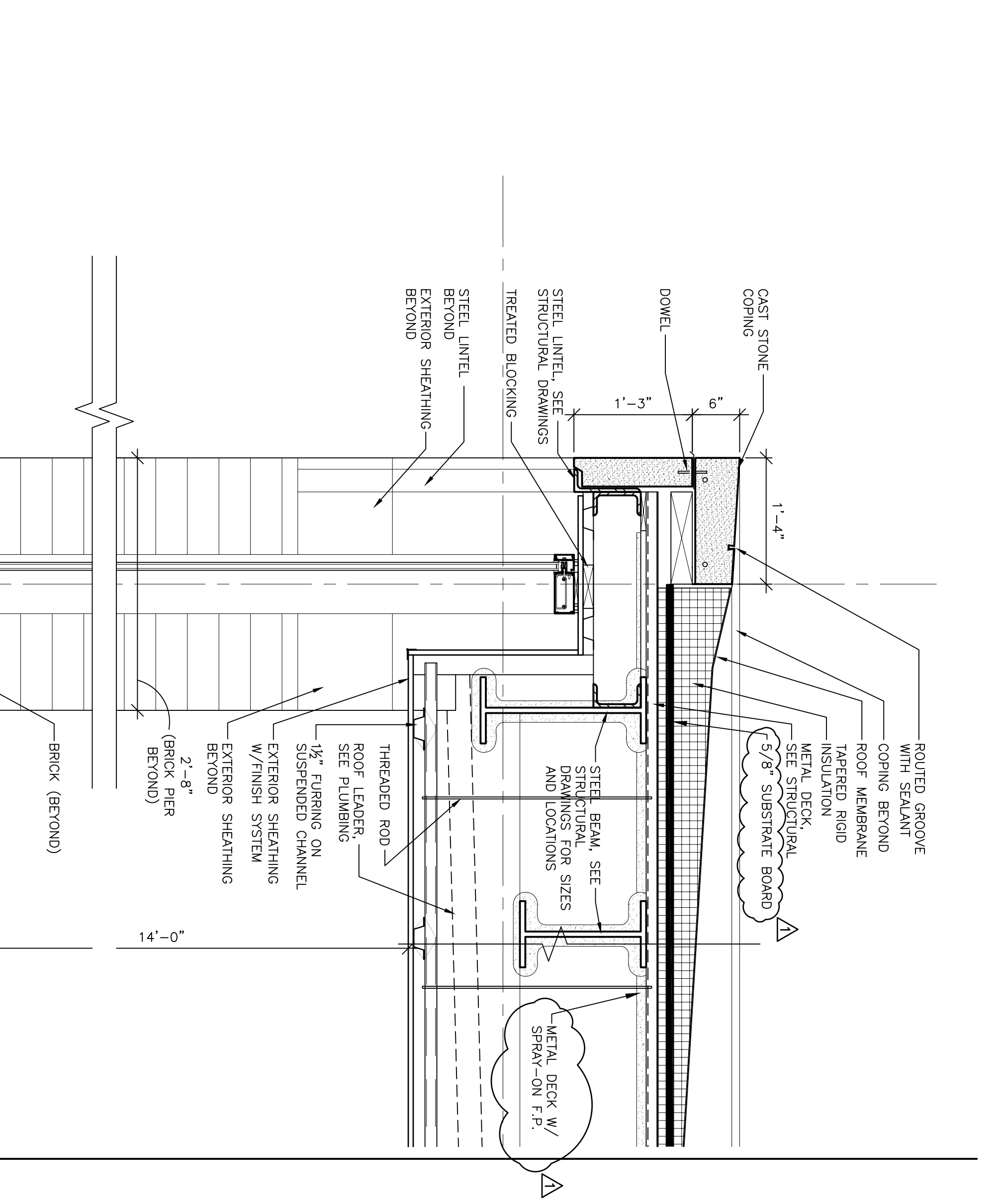
Francis
 Cauffman
 Foley

Hoffmann
 Francis Cauffman
 Chief Architect
 Philadelphia, PA 19103
 Phone: (215) 568-6250

MERCY
 Mercy Health
 System of Maine
 FORE RIVER SHORT
 STAY HOSPITAL

Project Number
 F05-4898
 Drawing Title and Number
 Entrance Canopy Alt. Plan,
 Sections & Elevations

A1.10



Project Number
 F05-4898
 Drawing Title and Number
 Entrance Canopy Alt. Plan,
 Sections & Elevations

A1.10