

Consultant
OML ENGINEER Associates, Inc.
 778 Main Street, Suite 8
 South Portland, ME 04106
 Phone: (207) 772-1070
 Fax: (207) 772-1070

Consultant
ASSOCIATE ARCHITECT/STRUCTURAL ENGINEER
 144 Park Street P.O. Box 618
 Portland, ME 04106
 Phone: (207) 772-1070
 Fax: (207) 772-1070

Consultant
SCS/NOVA Architects, Inc.
 The Arsenal on the Clashes
 Waterbury, MA 02472-5788
 Phone: (517) 234-0316
 Fax: (517) 234-0316

Consultant
EQUIPMENT PLANNING
 Gene Burton & Associates
 1000 Main Street, Suite 700
 Providence, RI 02903
 Phone: (401) 376-3100
 Fax: (401) 376-3114

Consultant
CONSTRUCTION MANAGER
 Ginzburg Building Company
 Providence, Rhode Island 02903
 Phone: (401) 456-5905
 Fax: (401) 456-5916

Consultant
FOOD SERVICE
 Regis Management, LLC
 1000 Main Street, Suite 700
 Providence, RI 02903
 Phone: (401) 321-5689
 Fax: (401) 321-5689

It is the responsibility of the Construction Sub-Contractors to verify all dimensions and notes before proceeding with any work.

Date: 11/10/06 FINAL - ISSUE FOR BID
 Drawn by: MAF/JUL/CLB/CJU
 Scale: AS NOTED

Francis

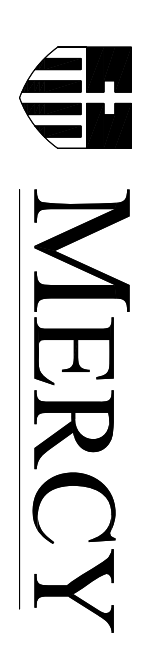
Cauffman

Foley

Hoffmann

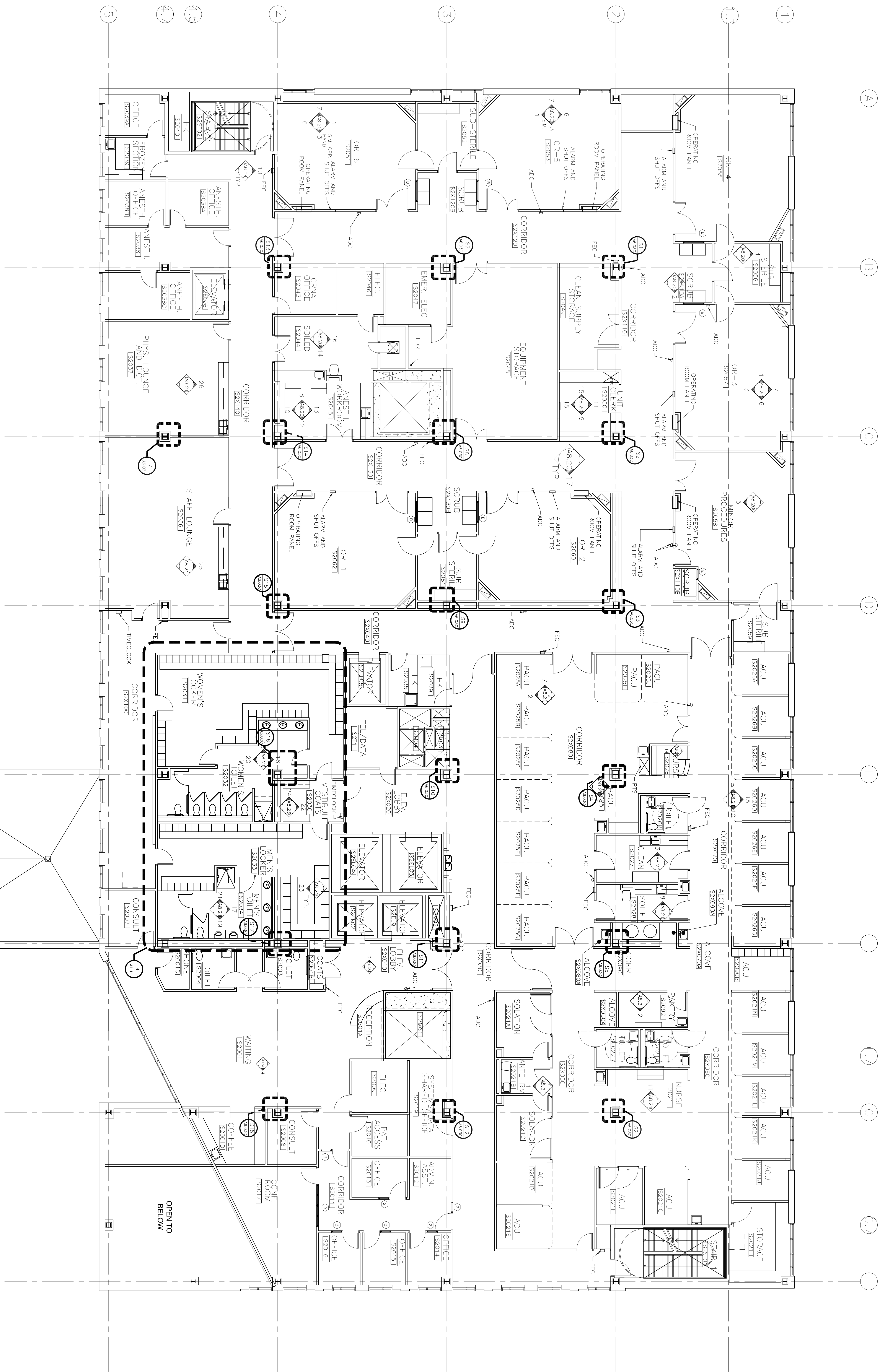
Francis Cauffman
 Kelly Hoffmann
 Architecture SAs
 2120 Acush Street
 Philadelphia, PA 19103
 215-498-5650

Project Title
 Mercy Health Care
 System of Maine
 FORE RIVER SHORT
 STAY HOSPITAL



Project Number
 F05-4898
 Drawing Title and Number
 Second Floor Plan

A1.02B



1 SECOND FLOOR PLAN
 A1.02B 1/8"=1'-0"