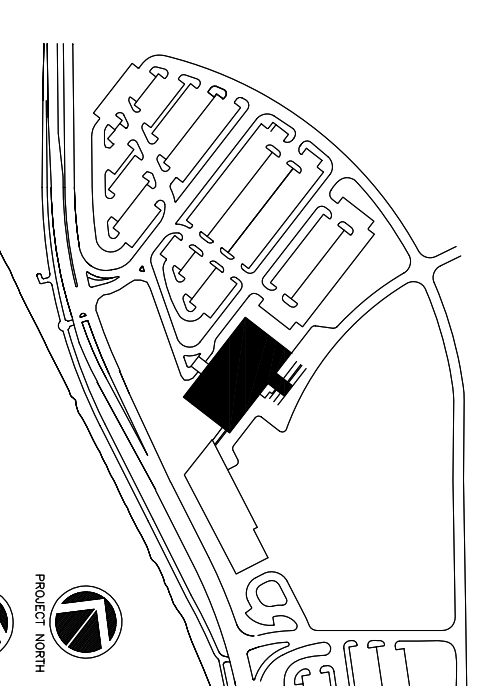


1 SECOND FLOOR PLAN
A1.02A 1/8"=1'-0"



Consultant
CIVIL ENGINEER Associates, Inc.
778 Main Street, Suite 8
South Portland, ME 04106
Phone: (207) 879-0886
Fax: (207) 879-0886

Consultant
ASSOCIATE ARCHITECT/STRUCTURAL ENGINEER
144 Park Street P.O. Box 618
Portland, ME 04106
Phone: (207) 772-1070
Fax: (207) 772-1070

Consultant
BCH/ARCHITECT/ENGINEER
The Ascent on the Clarks
Middletown, MA 02127-5788
Phone: (617) 234-0316
Fax: (617) 234-0316

Consultant
EQUIPMENT PLANNING
Gene Burton & Associates
1000 Main Street
Providence, RI 02903
Phone: (401) 378-3100
Fax: (401) 378-3114

Consultant
CONSTRUCTION MANAGER
Ginsburg Building Company
Providence, Rhode Island 02903
Phone: (401) 456-5805
Fax: (401) 456-5805

Consultant
FOOD SERVICE
Terra Management, LLC
1888 West Main Street
Nashville, TN 37203
Phone: (615) 221-5689
Fax: (615) 221-5689

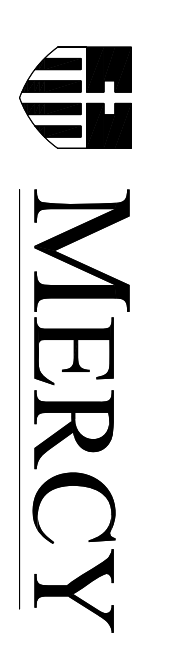
It is the responsibility of the Construction Sub-Contractors to verify all dimensions and notes before proceeding with any work.

Date: 11/10/06 FINAL - ISSUE FOR BID
Drawn by: MAF/JUL/CLB/CJU
Scale: AS NOTED

Francis
Caffman

Foley
Hoffmann

Project Title
Mercy Health Care
System of Maine
FORE RIVER SHORT
STAY HOSPITAL



Francis Caffman
2120 Acad Street
Portland, ME 04103
Phone: (207) 772-1070
Fax: (207) 772-1070

Ruby Hoffmann
2120 Acad Street
Portland, ME 04103
Phone: (207) 772-1070
Fax: (207) 772-1070

Project Number
F05-4898
Drawing Title and Number
Second Floor Plan

A1.02A