

Consultant
 OML ENGINEER Associates, Inc.
 778 Main Street, Suite 808
 Poughkeepsie, NY 12550
 Phone: (845) 875-1000
 Fax: (845) 875-1000

Consultant
 SSS/SCAPE ARCHITECT/STRUCTURAL ENGINEER
 144 Park Street P.O. Box 618
 Poughkeepsie, NY 12550
 Phone: (845) 772-3846
 Fax: (845) 772-3846

Consultant
 WSP|PARSONS/ECTERNA ENGINEER
 Board, 900 + Adams Consulting Engineers, LLC
 The Arsenal on the Commons
 316 Woburn, MA 02472-5799
 Phone: (617) 552-5339
 Fax: (617) 552-5339

Consultant
 EQUIPMENT PLANNING
 Gene Burdon & Associates
 10000 Highway 100
 Franklin, Tennessee 37067
 Phone: (615) 376-3100
 Fax: (615) 376-3114

Consultant
 CONSTRUCTION MANAGER
 Dineen Building Company
 7 Providence, Rhode Island 02903
 Phone: (401) 485-5155
 Fax: (401) 485-5155

Consultant
 FOOD SERVICE
 Francis & Associates, LLC
 1809 West End Ave Suite 400
 Nashville, TN 37203
 Phone: (615) 221-9889
 Fax: (615) 221-9889

11/10/06 FINAL - ISSUE FOR BID
 Drawn by
 MAF/JUL/CUB/CLJ
 Scale
 AS NOTED

Francis
 Cauffman

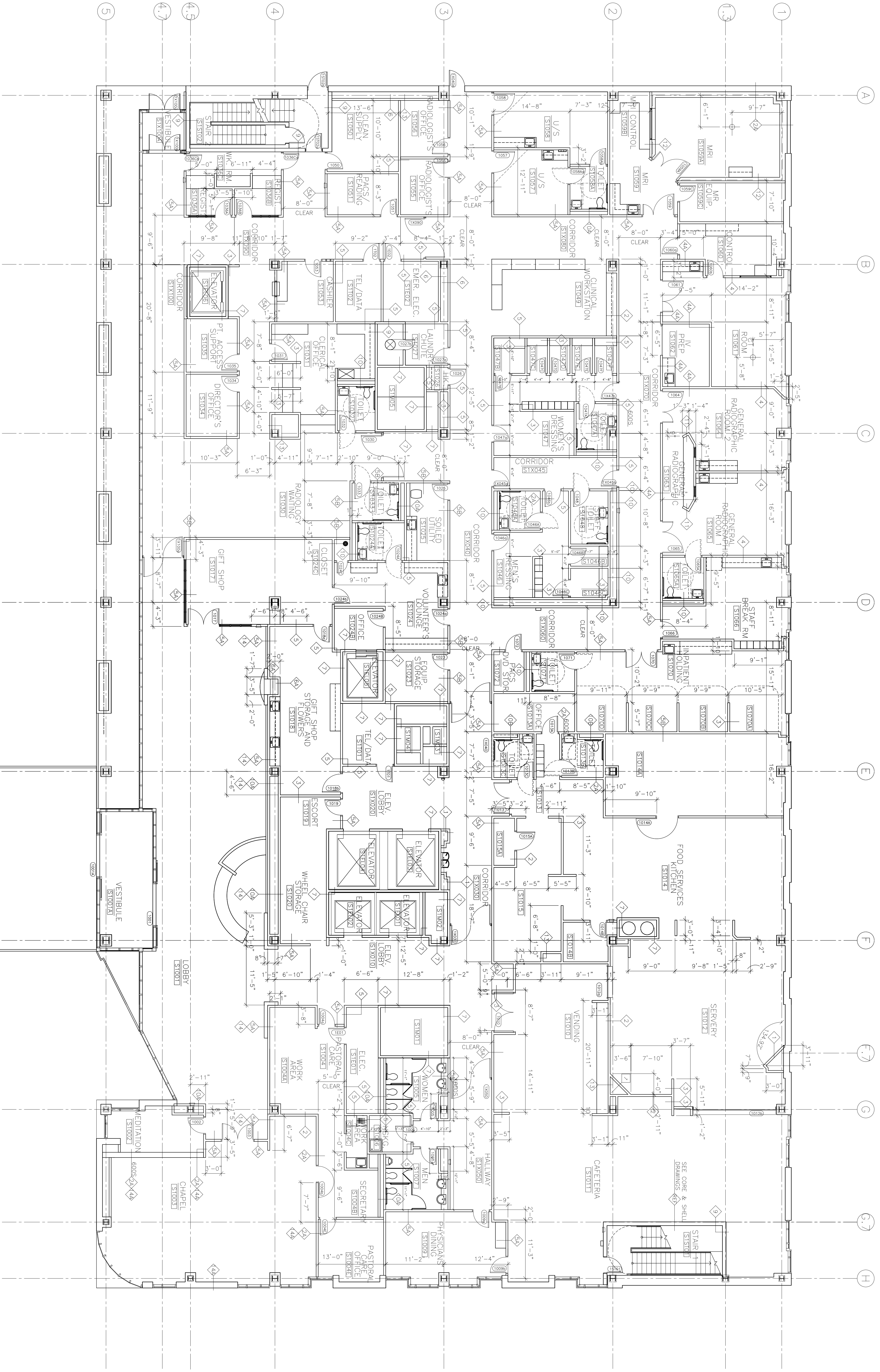
Foley
 Hoffmann

Project Title
 Mercy Health Care
 System of Maine
 FORE RIVER SHORT
 STAY HOSPITAL

Project Number
 05-4896
 Drawing Title and Number
 First Floor Plan



A1.01A



1 FIRST FLOOR PLAN
 A1.01A 1/8"=1'-0"