

Consultant
 CML ENGINEERS
 CML ENGINEERS Associates, Inc.
 272 Main Street, Suite 808
 South Portland, ME 04106
 Phone: (207) 772-1141
 Fax: (207) 879-0896

Consultant
 ASSOCIATE ARCHITECT/STRUCTURAL ENGINEER
 144 Park Street P.O. Box 618
 Portland, ME 04101
 Phone: (207) 772-3846
 Fax: (207) 772-1070

Consultant
 MCGRAW-HILL/ECTERNA ENGINEER
 3rd Floor on the Corners
 31 Waterfront, MA 02127-5799
 Boston, MA 02127-5799
 Phone: (617) 542-6336
 Fax: (617) 542-6336

Consultant
 EQUIPMENT PLANNING
 Gene Burton & Associates
 2000 Main Street, Suite 200
 Portland, ME 04101
 Phone: (617) 378-3100
 Fax: (617) 378-3114

Consultant
 CONSTRUCTION MANAGER
 Dineen Building Company
 700 Main Street, Suite 200
 Providence, Rhode Island 02903
 Phone: (401) 452-5155
 Fax: (401) 452-5155

Consultant
 FOOD SERVICE
 Food Service Concepts, LLC
 1808 West End Ave Suite 1400
 Nashville, TN 37203
 Phone: (615) 221-9899
 Fax: (615) 221-9899

It is the responsibility of the Construction Sub-Contractors to verify all dimensions and grades before proceeding with any work.

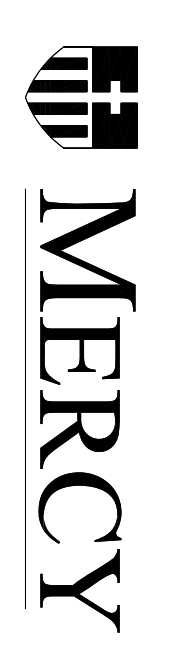
Date: 11/10/06 FINAL - ISSUE FOR BID
 Drawn by: MAF/JUL/CUB/CLJ
 Scale: AS NOTED

Francis
 Cauffman

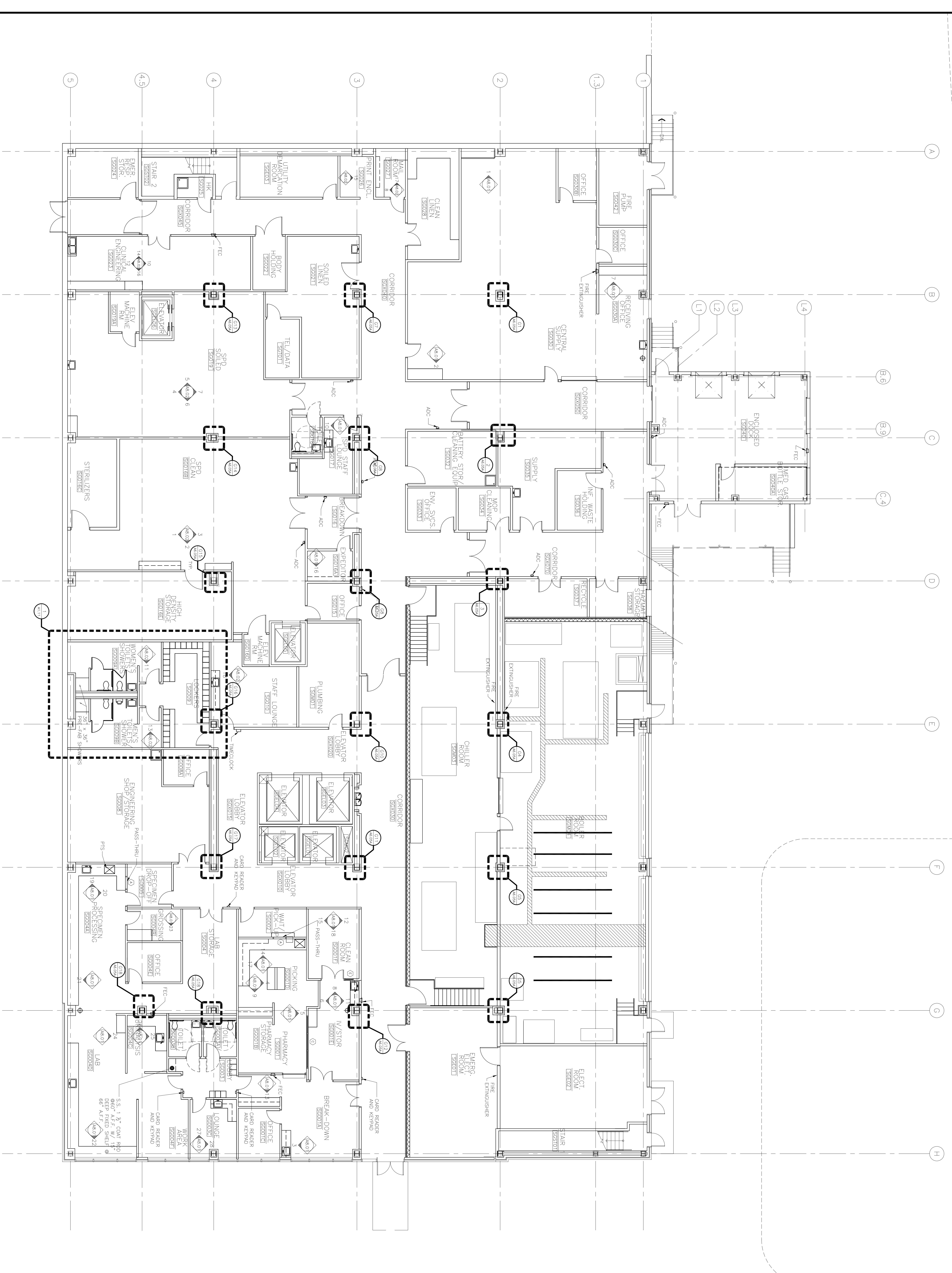
Foley
 Hoffmann

Project Name
 Francis Cauffman
 215-566-4250
 215-566-4250

Mercy Health Care
 System of Maine
 FORE RIVER SHORT
 STAY HOSPITAL



Project Number
 05-4896
 Drawing Title and Number
 Ground Floor Plan
A1.00B



1
 A1.00B
 1/8"=1'-0"
 GROUND FLOOR PLAN