

Consultant
 CIVIL ENGINEER Associates, Inc.
 778 Ken Street, Suite 8
 South Portland, ME 04106
 Phone: (207) 879-0886
 Fax: (207) 879-0886

Consultant
 ASSOCIATE ARCHITECT/STRUCTURAL ENGINEER
 144 Fore Street P.O. Box 618
 Portland, ME 04106
 Phone: (207) 772-1070
 Fax: (207) 772-1070

Consultant
 ECI/ARCHITECT/STRUCTURAL ENGINEER
 The Arsenal on the Clarks
 1000 Main Street
 Watertown, MA 02472-5788
 Phone: (617) 224-0316
 Fax: (617) 224-0316

Consultant
 EQUIPMENT PLANNING
 Gene Burton & Associates
 1000 Main Street, Suite 708
 Portland, ME 04106
 Phone: (616) 376-3100
 Fax: (616) 376-3114

Consultant
 CONSTRUCTION MANAGER
 Gishore Building Company
 Providence, Rhode Island 02903
 Phone: (401) 456-5905
 Fax: (401) 456-5918

Consultant
 FOOD SERVICE
 K&B Food Service, LLC
 1888 Waterbury Ave. #100
 Nashville, TN 37203
 Phone: (615) 221-5689
 Fax: (615) 221-5689

It is the responsibility of the Construction Sub-Contractors to verify all dimensions and grades before proceeding with any work.

Date
 11/10/06 FINAL - ISSUE FOR BID
 Drawn by
 MAF/JUL/CLB/CLU

Scale
 AS NOTED

Francis
 Cauffman

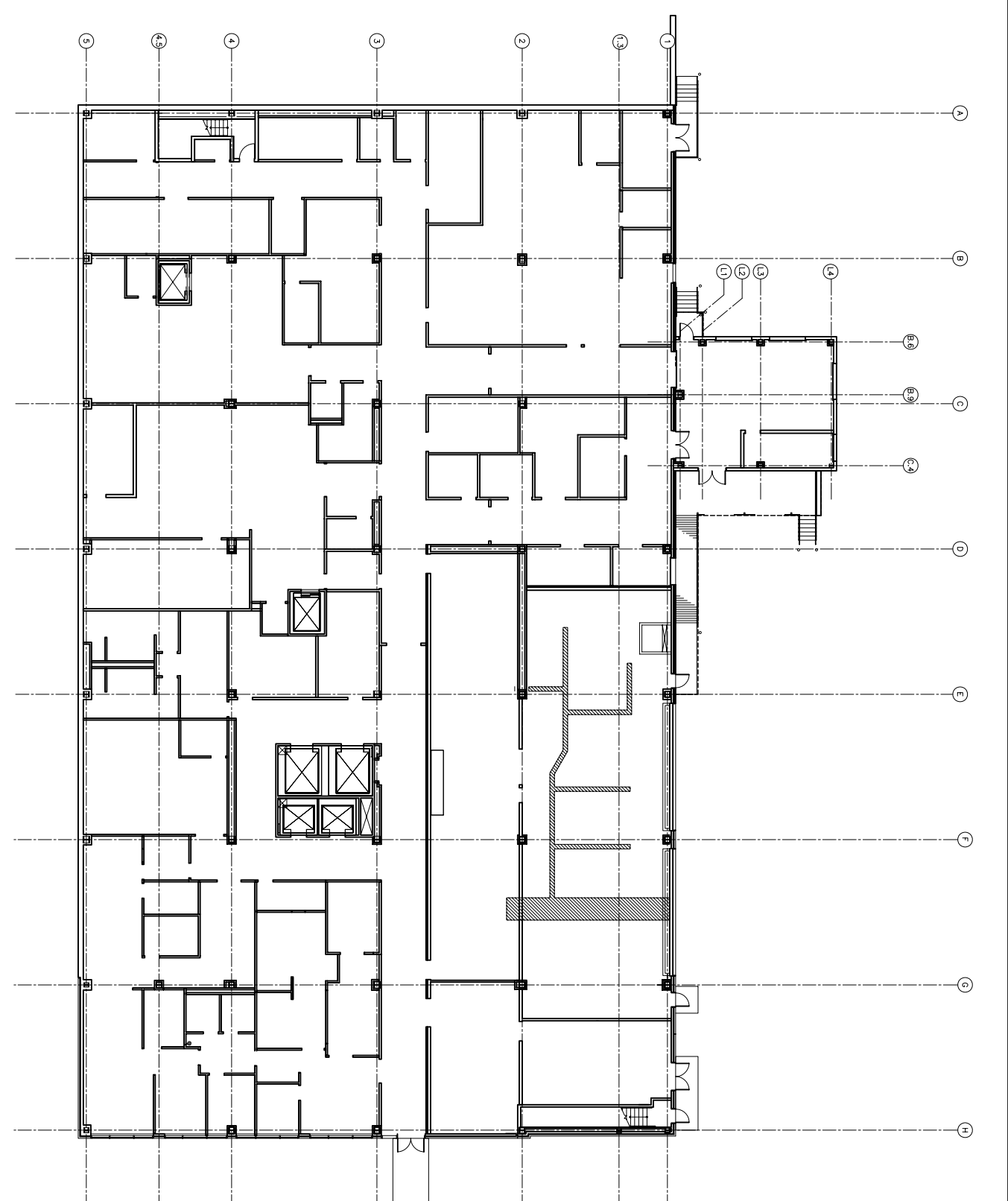
Foley
 Hoffmann

Project Title
 Francis Cauffman
 Fore River Hospital
 Architecture SIB
 2120 Arch Street
 Philadelphia, PA 19103
 215-498-5850

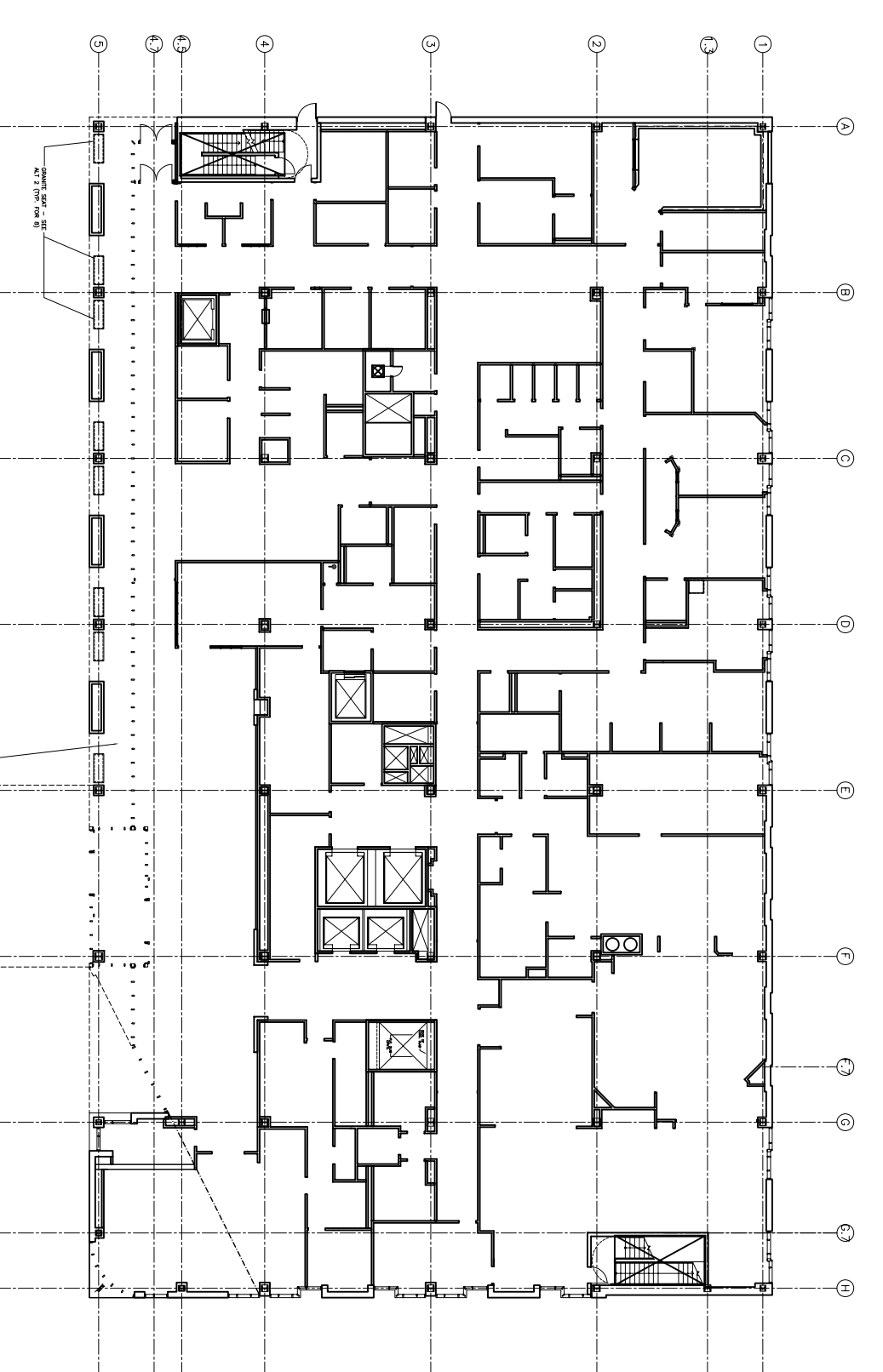
Mercy Health Care
 System of Maine
 FORE RIVER SHORT
 STAY HOSPITAL



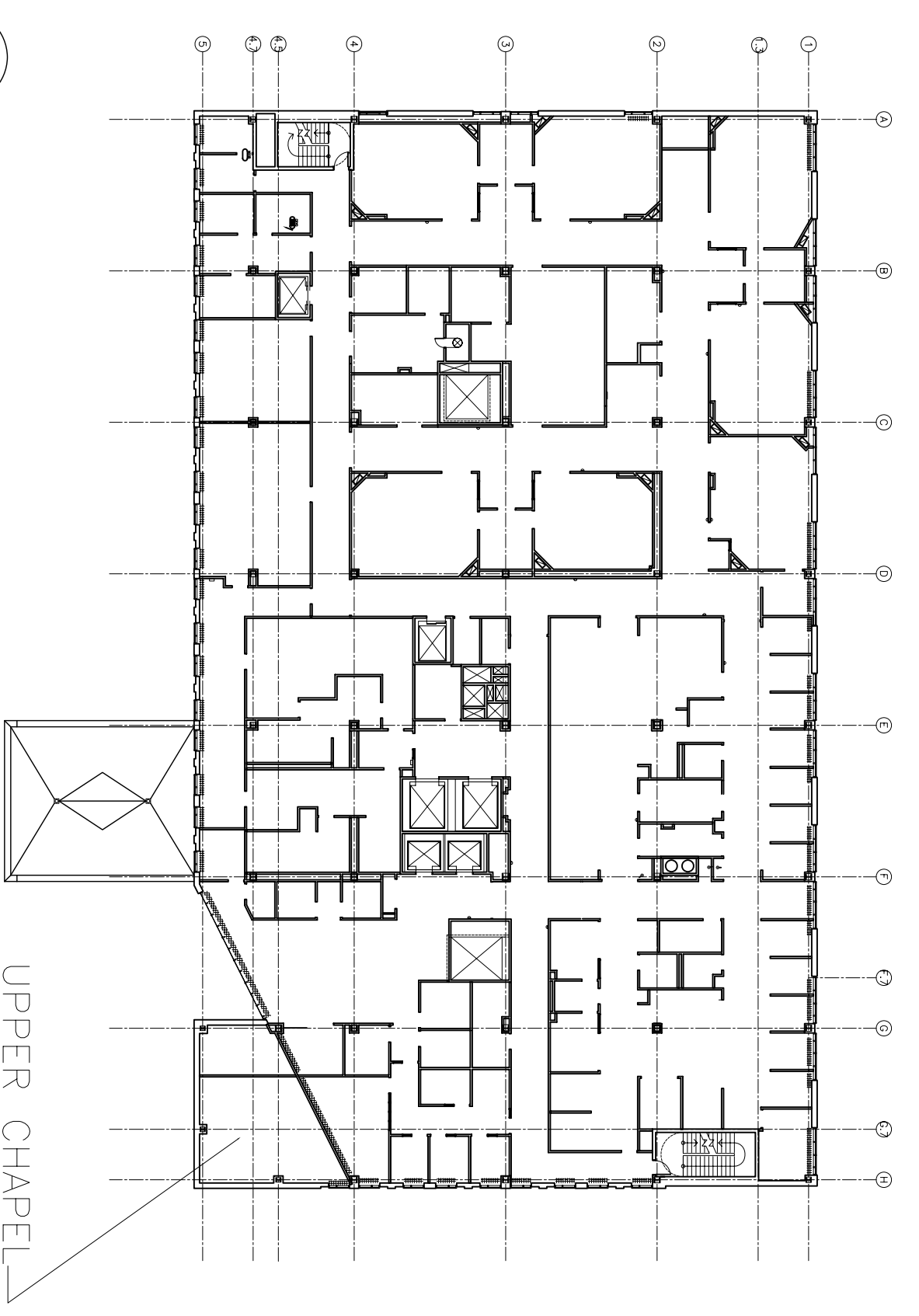
Project Number
 F05-4898
 Drawing Title and Number
 Square Footage Summary



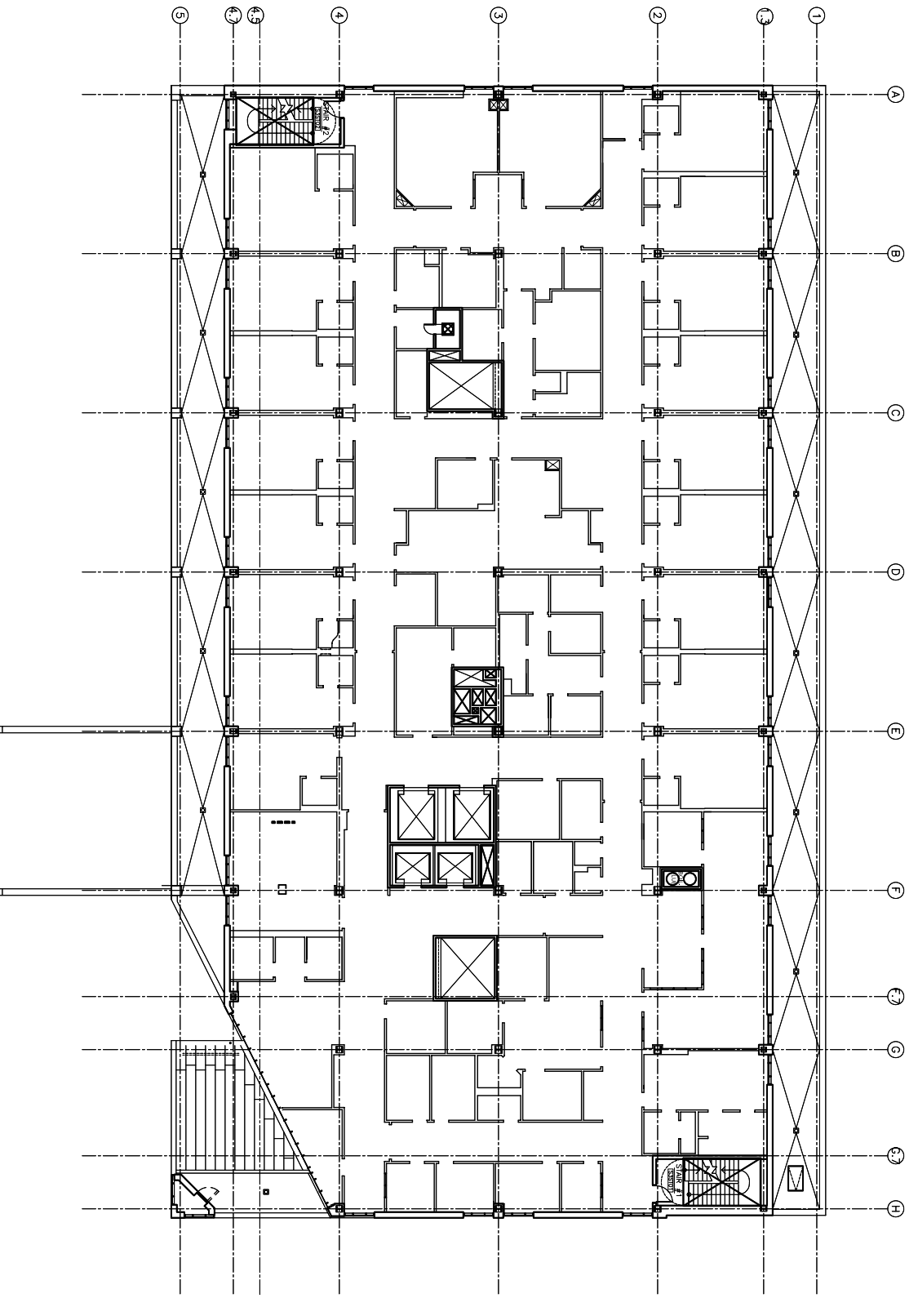
1 GROUND LEVEL
 1/32" = 1'-0"
 Ground Level
 Program 30,899 bgsf
 33,540 bgsf



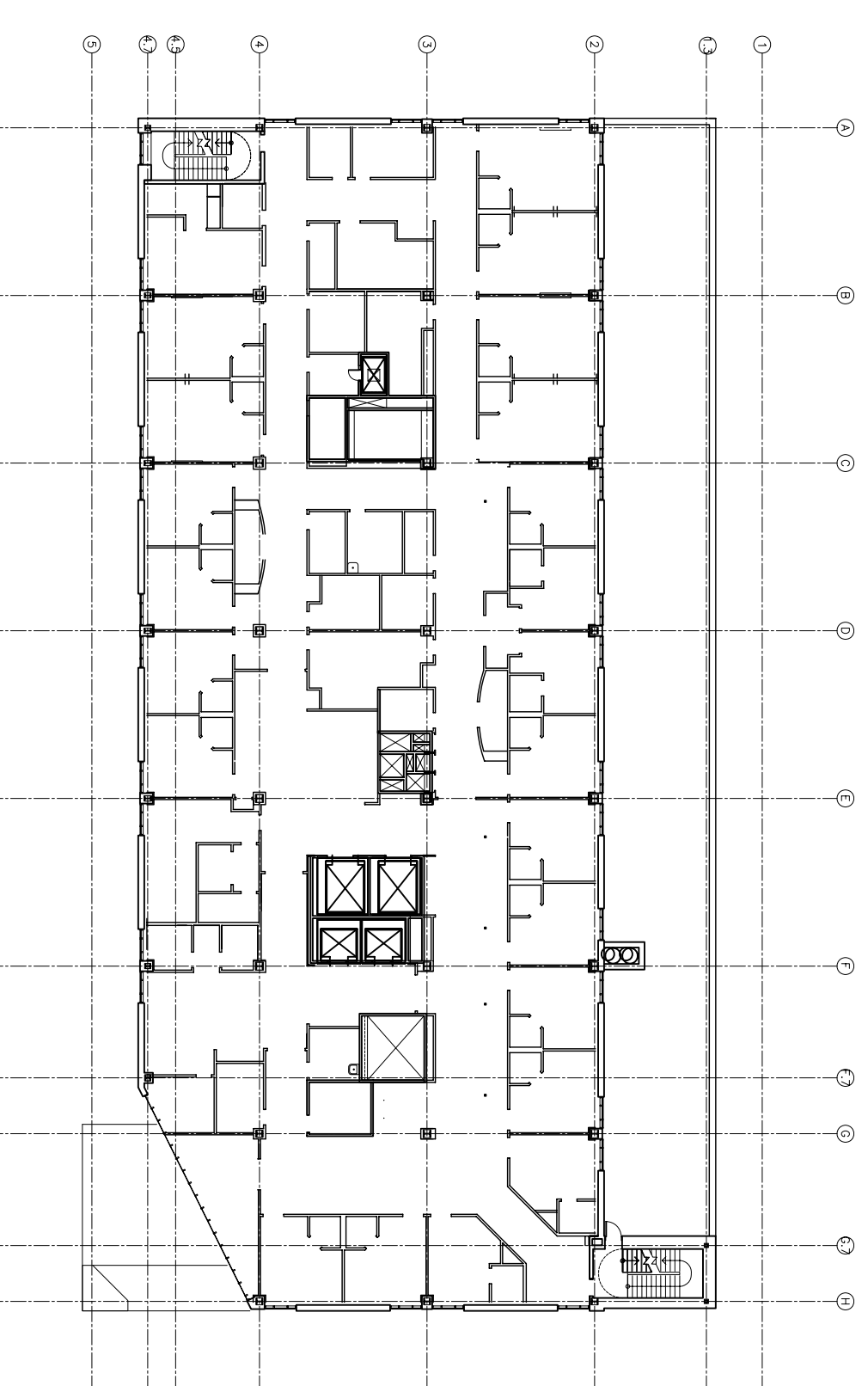
2 LEVEL 1
 1/32" = 1'-0"
 Level 1 (Main Entry)
 Program 29,404 bgsf
 28,509 bgsf



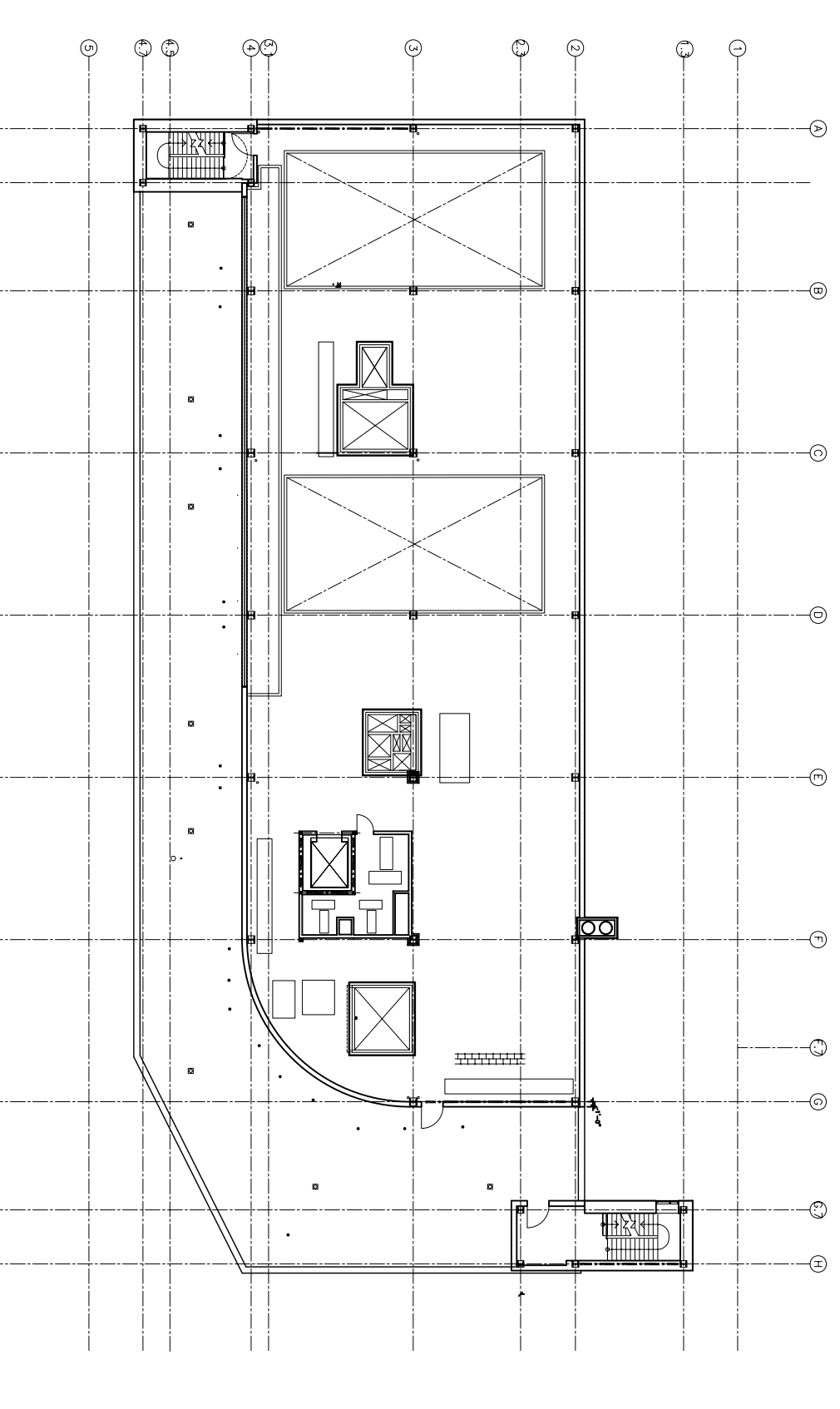
3 LEVEL 2
 1/32" = 1'-0"
 Level 2 (Surgery)
 Program 30,664 bgsf
 30,361 bgsf



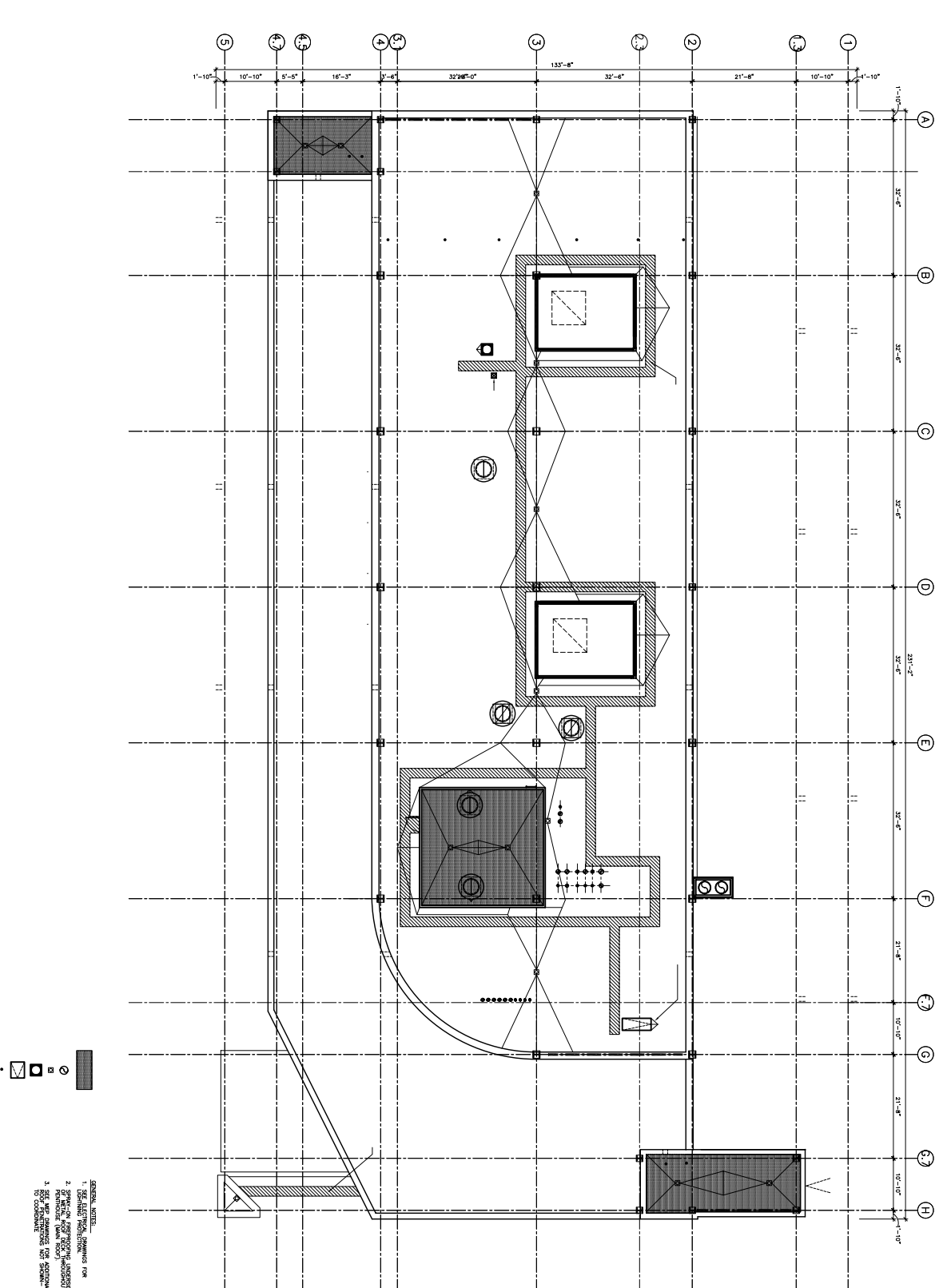
4 LEVEL 3
 1/32" = 1'-0"
 Level 3 (Birthplace)
 Program 25,403 bgsf
 25,159 bgsf



5 LEVEL 4
 1/32" = 1'-0"
 Level 4 (Inpatient)
 Program 20,735 bgsf
 19,543 bgsf



6 ROOF LEVEL
 1/32" = 1'-0"
 Penthouse
 Program 15,103 bgsf (allow. for Elevator Moch. Rm and Stair)
 0 bgsf



7 UPPER ROOF PLAN
 1/32" = 1'-0"
 UPPER ROOF PLAN
 Program 0 bgsf
 0 bgsf

Floor to Floor Heights:	
Ground	14'-6"
First	15'-2"
Second	15'-2"
Third	14'-6"
Fourth	14'-6"

Drawing	BGSF
Ground	30,899
First	29,404
Second	30,664
Third	25,403
Fourth	20,735
Penthouse	15,103
TOTAL	152,208

Notes:
 Canopy Square Footage = 1,322 sf -N.I.C.
 Arcade and Upper level of Chapel = 1/2 sf calculated
 All Square Footage Calculations to Outside Face of wall
 All Square Footage Calculations total = G.B.S.F. (Gross Building Square Footage)

TOTAL SQUARE FOOTAGES:
 KLWK Final Program (Budget based on)
 - 136,610 sf (=Δ)
 Actual Building - Date 11.16.05
 - 152,208 sf
 -Δ=15,598 sf