

Consultant  
**CIVIL ENGINEER**  
 GNL Engineers  
 778 Main Street, Suite 8  
 South Portland, ME 04106  
 Phone: (207) 772-1141  
 Fax: (207) 879-0896

Consultant  
**ASSOCIATE ARCHITECT/STRUCTURAL ENGINEER**  
 144 Park Street P.O. Box 618  
 Portland, ME 04101  
 Phone: (207) 772-3846  
 Fax: (207) 772-1070

Consultant  
**Mechanical/Electrical Engineer**  
 Bord, Roy & Adams Consulting Engineers, LLC  
 The Arsenal on the Corners  
 31 Wolcott Street  
 Woburn, MA 02472-5799  
 Phone: (617) 235-3100  
 Fax: (617) 235-3114

Consultant  
**EQUIPMENT PLANNING**  
 Gary Burton & Associates  
 10000 Highway 101  
 Franklin, Tennessee 37067  
 Phone: (615) 376-3100  
 Fax: (615) 376-3114

Consultant  
**CONSTRUCTION MANAGER**  
 Greene Building Company  
 7 Providence Road  
 Providence, Rhode Island 02903  
 Phone: (401) 426-5515  
 Fax: (401) 426-5515

Consultant  
**FOOD SERVICE**  
 Food Service Concepts, LLC  
 1808 West End Ave Suite 400  
 Nashville, TN 37203  
 Phone: (615) 221-5689  
 Fax: (615) 221-5689

It is the responsibility of the Construction Site Contractors to verify all dimensions and grades before proceeding with any work.

Date: 11/10/06 FINAL - ISSUE FOR BID  
 Drawn by: MAF/JUL/CLB/CLJ  
 Scale:  
 AS NOTED

Francis

Cauffman

Foley

Hoffmann

Project Title  
 Francis Cauffman  
 Architects, LLC  
 2120 Acad Street  
 Portland, ME 04103  
 Phone: (207) 772-1141  
 Fax: (207) 879-0896

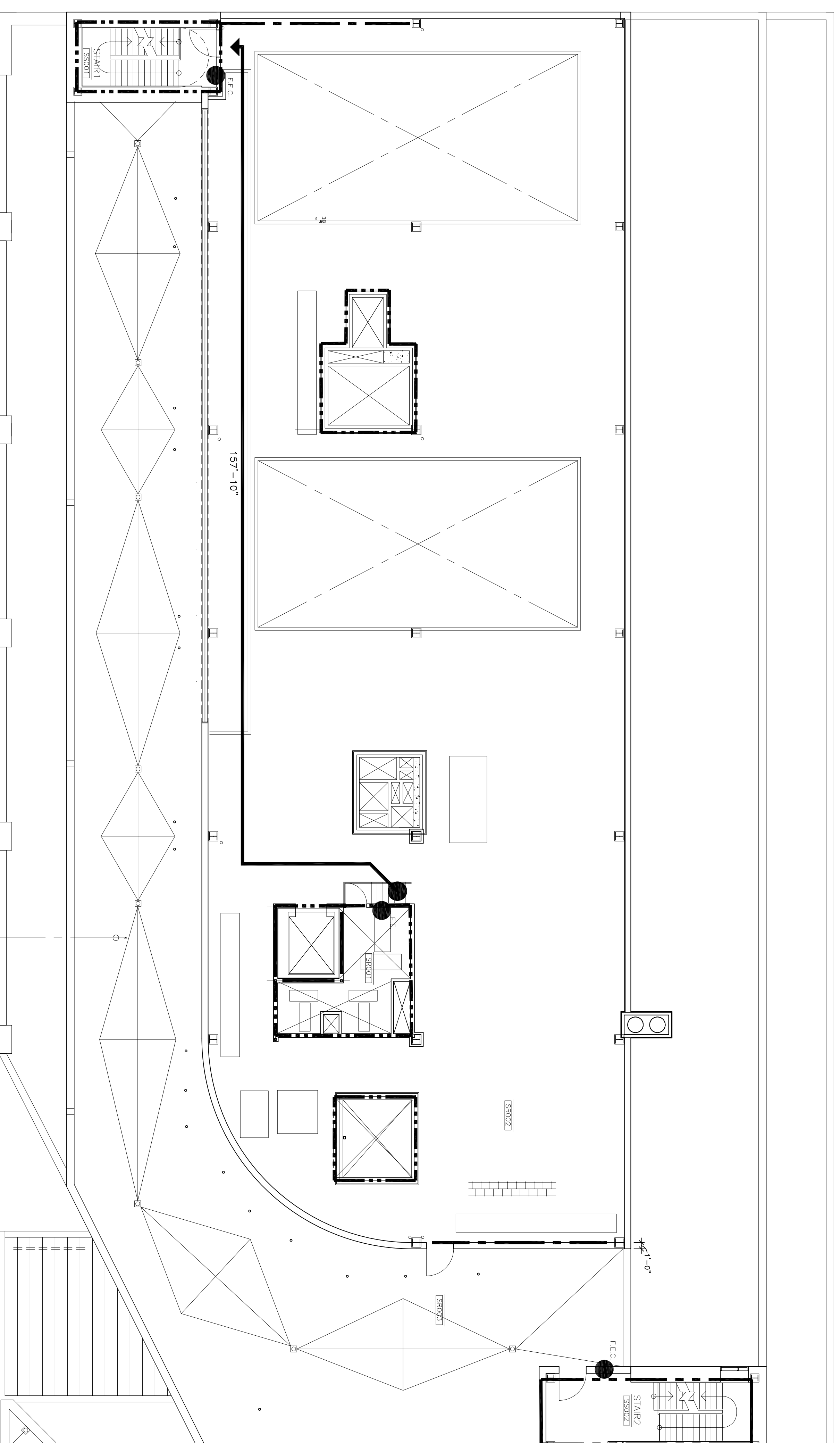
Project Title  
 Mercy Health Care  
 System of Maine  
 FORE RIVER SHORT  
 STAY HOSPITAL



Project Number  
 05-4896

Drawing Title and Number  
 ROOF- CODE EGRESS  
 AND LIFE SAFETY

A0.05



1 ROOF EGRESS PLAN  
 A0.05 3/32" = 1'-0"

LEGEND	
	SMOKE COMPARTMENT DESIGNATION
	FLOOR COMPARTMENT DESIGNATION
<b>SCF-1</b>	<b>SCF-1</b>
	2 HR FIRE SEPARATION
	1 HR FIRE SEPARATION
	SMOKE BARRIER (COMPARTMENT)
	SMOKE PARTITION
	TRAVEL DISTANCE
	FIRE EXTINGUISHER CABINET
	FIRE EXTINGUISHER