

Consultant
 CML ENGINEER Associates, Inc.
 778 Main Street, Suite 8
 South Portland, ME 04106
 Phone: (207) 879-0886
 Fax: (207) 879-0886

Consultant
 ASSOCIATE ARCHITECT/STRUCTURAL ENGINEER
 144 Fore Street P.O. Box 618
 Portland, ME 04106
 Phone: (207) 772-1070
 Fax: (207) 772-1070

Consultant
 ECG/ARCHITECT/STRUCTURAL ENGINEER
 The Arsenal on the Clarks
 Portland, ME 04106
 Phone: (616) 234-0316
 Fax: (616) 234-0316

Consultant
 EQUIPMENT PLANNING
 Gary Burton, & Associates
 1000 Main Street, Suite 700
 Portland, ME 04106
 Phone: (616) 376-3100
 Fax: (616) 376-3114

Consultant
 CONSTRUCTION MANAGER
 Ginzburg Building Company
 Providence, Rhode Island 02903
 Phone: (401) 456-5905
 Fax: (401) 456-5918

Consultant
 FOOD SERVICE
 T&B Food Service, LLC
 1881 Main Street, Suite 1400
 Nashville, TN 37203
 Phone: (615) 261-5689
 Fax: (615) 261-5689

It is the responsibility of the Construction Sub-Contractors to verify all dimensions and grades before proceeding with any work.

Date
 11/11/06 FINAL - ISSUE FOR BID
 Drawn by
 MAF/JUL/CLB/CLJ

Scale
 AS NOTED

Francis
 Cauffman

Foley
 Hoffmann

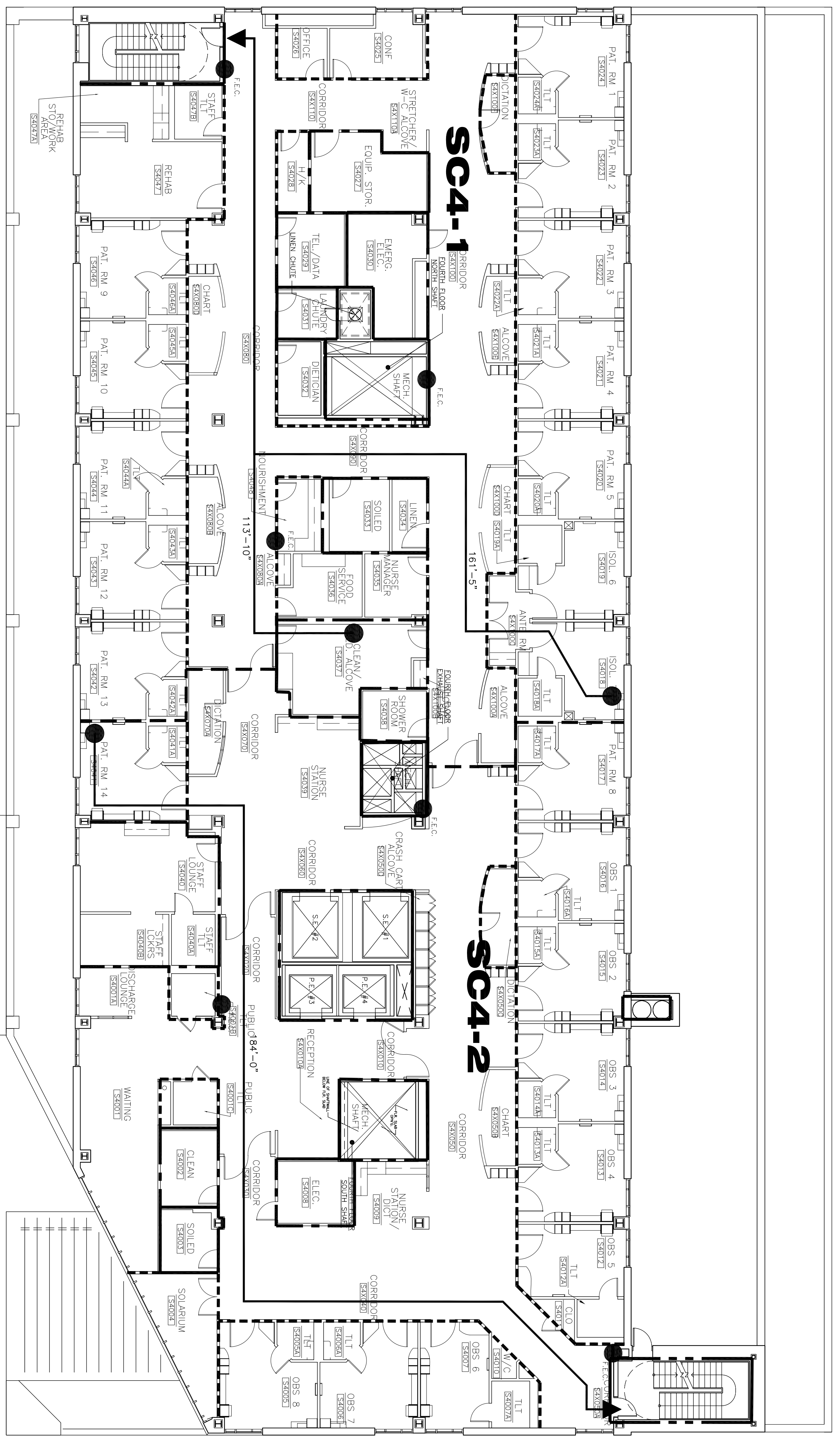
Francis Cauffman
 Kelly Hoffmann
 Architects SAs
 2120 Arch Street
 Philadelphia, PA 19103
 215-598-5850

Project Title
 Mercy Health Care
 System of Maine
 FORE RIVER SHORT
 STAY HOSPITAL



Project Number
 FOS-4998

Drawing Title and Number
 FOURTH FLOOR EGRESS
 AND LIFE SAFETY PLAN
A0.04



1
 A0.04
 3/32" = 1'-0"
 FOURTH FLOOR EGRESS PLAN

LEGEND	
	SMOKE COMPARTMENT DESIGNATION
	FLOOR COMPARTMENT DESIGNATION
SCF-1	SCF-1
	2 HR FIRE SEPARATION
	1 HR FIRE SEPARATION
	SMOKE BARRIER (COMPARTMENT)
	SMOKE PARTITION
	TRAVEL DISTANCE
	FIRE EXTINGUISHER CABINET
	FIRE EXTINGUISHER