

Consultant  
**CME ENGINEERS**  
 778 Main Street, Suite 8  
 South Portland, ME 04106  
 Phone: (207) 772-1141  
 Fax: (207) 879-0896

Consultant  
**SSSOCIATE ARCHITECT/STRUCTURAL ENGINEER**  
 144 Park Street P.O. Box 618  
 Portland, ME 04101  
 Phone: (207) 772-3846  
 Fax: (207) 772-1070

Consultant  
**VECTRONIC/ELECTRICAL ENGINEER**  
 Bard, 800 + Adams Consulting Engineers, LLC  
 The Asenal on the Cornes  
 Woburn, MA 02472-5799  
 Phone: (617) 924-9339  
 Fax: (617) 924-9339

Consultant  
**EQUIPMENT PLANNING**  
 Gens Burton & Associates  
 Franklin, Tennessee 37067  
 Phone: (615) 376-3100  
 Fax: (615) 376-3114

Consultant  
**CONSTRUCTION MANAGER**  
 Indigo Building Company  
 Providence, Rhode Island 02903  
 Phone: (401) 485-5515  
 Fax: (401) 485-5515

Consultant  
**FOOD SERVICE**  
 Food Service One, LLC  
 1809 West End Ave Suite 1400  
 Nashville, TN 37203  
 Phone: (615) 221-5689  
 Fax: (615) 221-5689

It is the responsibility of the Construction Sub-Contractors to verify all dimensions and grades before proceeding with any work.

Date: 11/10/06 FINAL - ISSUE FOR BID  
 Drawn by: MAF/JUL/CLB/CLJ  
 Scale: AS NOTED

Francis

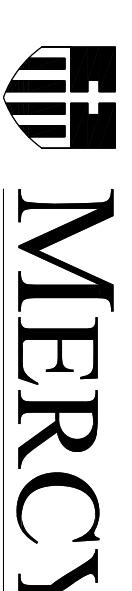
Cauffman

Foley

Hoffmann

Francis Cauffman 2120 Acad Street  
 Portland, ME 04103  
 Architects USA 215-566-6250

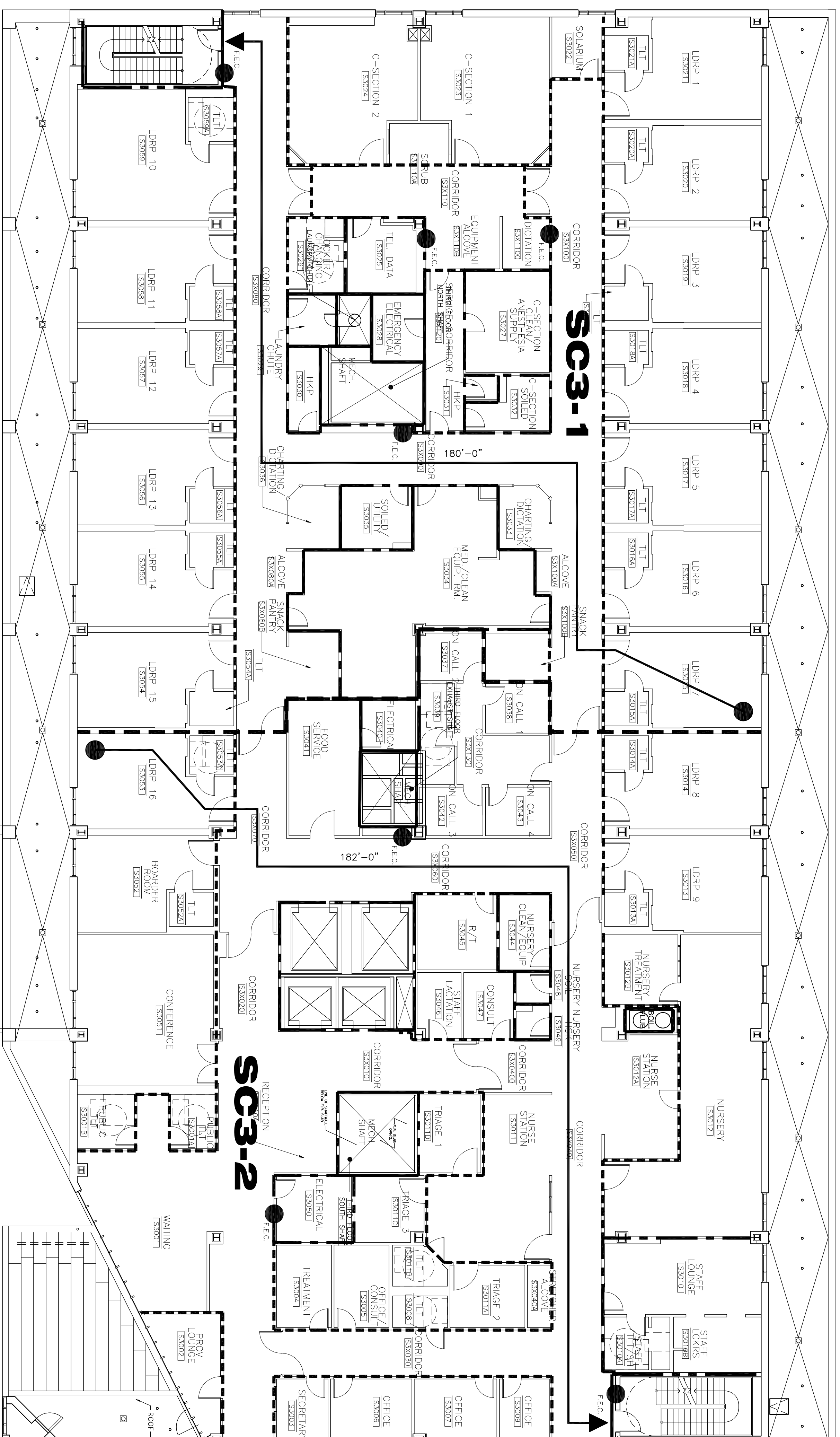
Project Title  
 Mercy Health Care  
 System of Maine  
 FORE RIVER SHORT  
 STAY HOSPITAL



Project Number  
 FD5-4998

Drawing Title and Number  
 THIRD FLOOR CODE EGRESS AND  
 LIFE SAFETY PLAN

**A0.03**



1 THIRD FLOOR EGRESS PLAN  
 A0.03 3/32" = 1'-0"

LEGEND	
	SMOKE - FLOOR COMPARTMENT
	SMOKE - COMPARTMENT DESIGNATION
<b>SCF-1</b>	
	2 HR FIRE SEPARATION
	1 HR FIRE SEPARATION
	SMOKE BARRIER (COMPARTMENT)
	SMOKE PARTITION
	TRAVEL DISTANCE
	FIRE EXTINGUISHER CABINET
	FIRE EXTINGUISHER