

Consultant
CIVIL ENGINEER
 CME Engineers Associates, Inc.
 778 Main Street, Suite 800
 South Portland, ME 04106
 Phone: (207) 772-1101
 Fax: (207) 879-0896

Consultant
REGISTERED ARCHITECT/STRUCTURAL ENGINEER
 144 Fore Street P.O. Box 618
 Portland, ME 04101
 Phone: (207) 772-3846
 Fax: (207) 772-1070

Consultant
MEDICAL/ELECTRICAL ENGINEER
 Bard, Roy & Adams Consulting Engineers, LLC
 The Asend on the Clarks
 31 Waterman, MA 02472-5799
 Phone: (508) 448-5515
 Fax: (508) 298-5114

Consultant
EQUIPMENT PLANNING
 Greg Burton & Associates
 Franklin, Tennessee 37067
 Phone: (615) 376-3100
 Fax: (615) 376-3100

Consultant
CONSTRUCTION MANAGER
 Greene Building Company
 Providence, Rhode Island 02903
 Phone: (401) 458-5505
 Fax: (401) 458-5515

Consultant
FOOD SERVICE
 Food Service Systems, LLC
 1808 West End Ave Suite 1400
 Nashville, TN 37203
 Phone: (615) 271-5689
 Fax: (615) 271-5689

It is the responsibility of the Construction Sub-Contractors to verify all dimensions and grades before proceeding with any work.

Scale
 AS NOTED

11/10/06 FINAL - ISSUE FOR BID
 Drawn by
 MAF/JUL/CUB/CLJ

Francis
 Cauffman

Foley
 Hoffmann

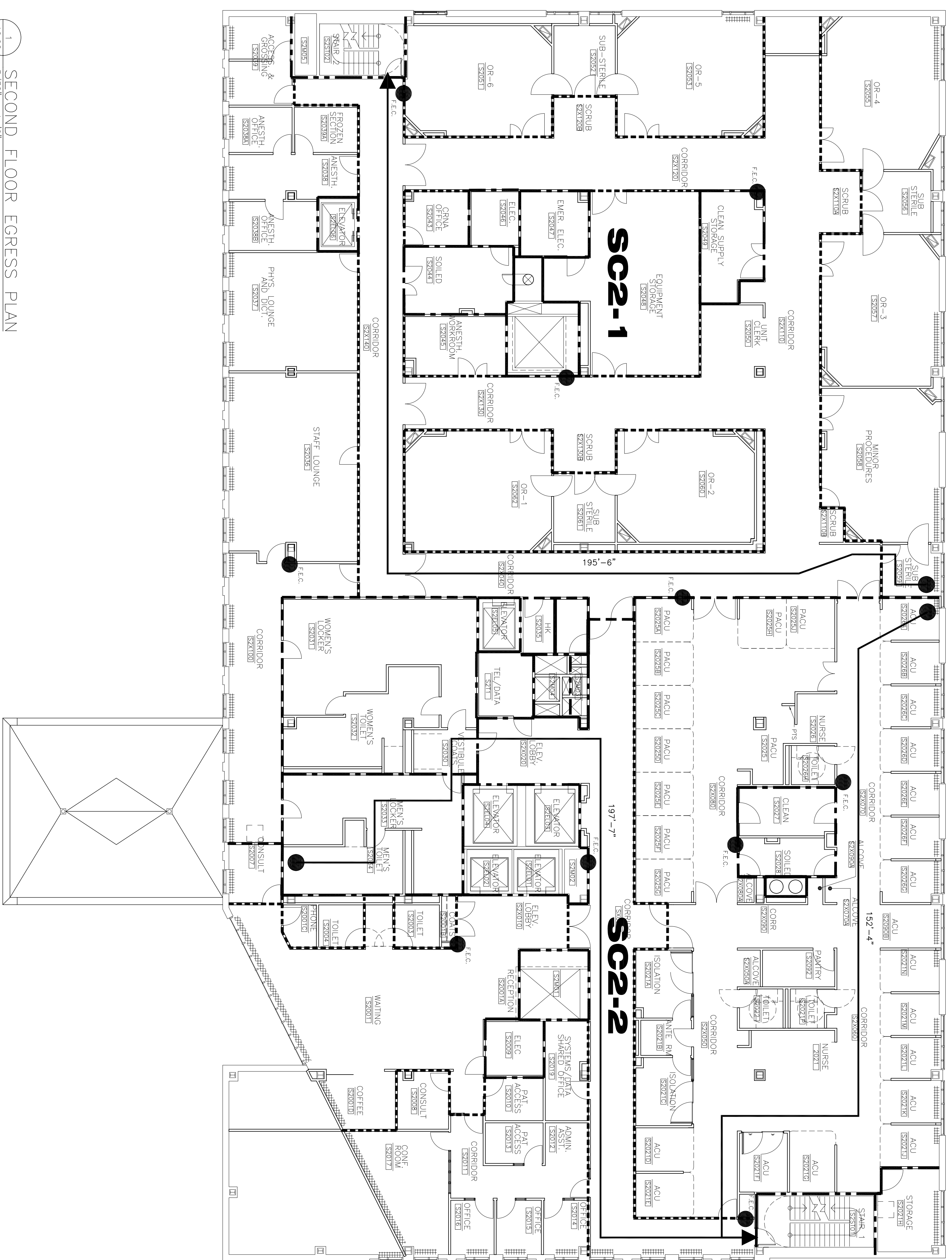
Francis Cauffman 2720 Acad Street 19103
 Architects Ltd. 215-566-4250

Project Title
 Mercy Health Care
 System of Maine
 FORE RIVER SHORT
 STAY HOSPITAL



Project Number
 FD-4896
 Drawing Title and Number
 Second Floor Egress Plans
 Life Safety Plans

A0.02



1 SECOND FLOOR EGRESS PLAN
 A0.02 3/27' = 1'-0"

